

LYRICS

148573

from

'TOLD IN THE GATE'

by ARLO BATES, set to music by
G. W. CHADWICK.



Sweetheart thy lips are touched with flame.	Net .40
Sings the nightingale to the rose.40
The rose leans over the pool.40
Love's like a summer rose.40
As in waves without number.40
Dear love when in thine arms.40
Was I not thine.40
In mead where roses bloom.40
Sister fairest why art thou sighing.40
<u>O let night speak of me.</u>	<u>.40</u>
I said to the wind of the south.40
and Were I a Prince Egyptian.40



HIGH VOICE.

Complete \$ 1.25 Net

LOW VOICE.

The ARTHUR P. SCHMIDT Co.

BOSTON
120 Boylston St.

Made in U.S.A.

NEW YORK
8 West 40th St.

R

Oh, Let the Night Speak of Me

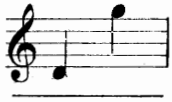
Oh, let night speak of me, for day
Knows not how breaks with woe my heart;
Day knows not how I mournful stray,
Weeping for thee, so dear thou art.

The sad night weeps with me, and lays
Her tear-wet cheek against my own;
Although I walk in sunlit ways,
Still doth my heart in darkness moan.

The night shall speak of me and say
All things to thee I dare not show;
And to thy dreams my love display,
Till thou art melted by my woe.

ARLO BATES

To MAX HEINRICH.



Oh, let night speak of me.



From "THE VOICE OF SAKINA."

"He strove to ease his sorrows with a song,
While hot tears to his eyelids pressed like doves
Which beat against their prison to be free?"

G.W. CHADWICK.

Molto Moderato.

Oh, let night speak of me,

f

ped. *

for day knows not how breaks with woe my heart,

p

dim. *p*

Day knows not how I mourn - ful stray, Weep - ing for

p

thee, so dear, thou art. *pp* The sad night

weeps with me, and lays Her tear wet cheek a - gainst my

own; *f* Al - though I walk in sun - - lit

ways, *p* Still doth my heart in dark - - - ness

moan. _____ The night shall speak of me _____

f > > >

8va
bassa

_____ and say All things to thee I dare not show; _____

And to thy dreams my love dis-play, _____ Till thou art

f *bo*

melt - - ed by my woe. (ARLO BATES.)

p



	Net
Allah Sop. or Ten. in E. — Alto or Bar. in D \flat	each. 40
The Lament Sop. or Ten. in C min. — Alto or Bass in A min.	each. 40
The Lily Sop. or Ten. in G — Alto or Bass in E \flat	each. 40
Green grows the Willow	40
The Miller's Daughter	40
Sorais' Song	40
King Death	40
The Sea King	40
Nocturne Sop. or Ten. in A min. — Mez. Sop. or Bar. in F min.	each. 40
Song from the Persian	40
A Bonny Curl	40
The Maiden and the Butterfly Sop. or Ten. in D.—Mez. Sop. or Bar. in C—Alto or Bass in B \flat	40
A Warning	40
Request	40
Gay little Dandelion	40
Thou art so like a flower Sop. or Ten. in E. — Mez. Sop. or Bar. in D \flat	each. 40
When our heads are bowed with woe. (Sacred) Sop. or Ten. in E \flat . — Mez. Sop. or Bar. in D \flat	each. 40
O Mother dear, Jerusalem. (Sacred) Sop. or Ten. in A \flat . — Alto or Bar. in F.	each. 40
Let not your heart be troubled. (Sacred) Sop. or Ten. in E \flat . — Mez. Sop. or Bar. in C.	each. 40
Rose Guerdon	40
Serenade	40
Before the Dawn Sop. or Ten. in D \flat . — Mez. Sop. or Bar. in B \flat	each. 45
The Danza Sop. or Ten. in F — Mez. Sop. or Bar. in D \flat	each. 45
He loves me Sop. or Ten. in F \sharp . — Mez. Sop. or Bar. in E \flat	each. 40
In Bygone Days Sop. or Ten. in E \flat . — Mez. Sop. or Bar. in C.	each. 40
I know two eyes Sop. or Ten. in F.—Alto or Bar. in D	40
Sweet wind that blows Sop. or Ten. in B \flat . — Mez. Sop. or Bar. in G \flat	each. 40
Lullaby	40
Bedouin Love Song Sop. or Ten. in D min. — Alto or Bar. in B \flat min.	each. 40

The ARTHUR P. SCHMIDT Co.
 BOSTON NEW YORK
 120 BOYLSTON ST. 8 WEST 40 TH ST.