

CAPRICHIO N° 5

OP-20

ARMONIZADO POR LUIS ALVAREZ

LEGNANI

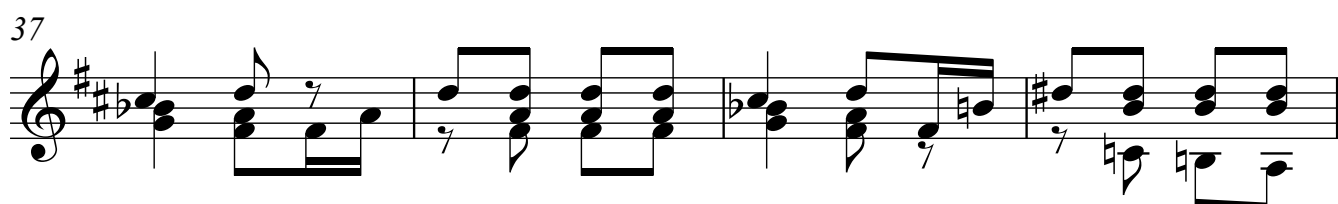
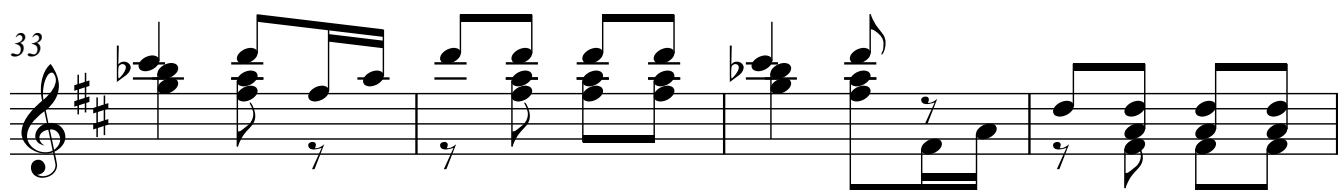
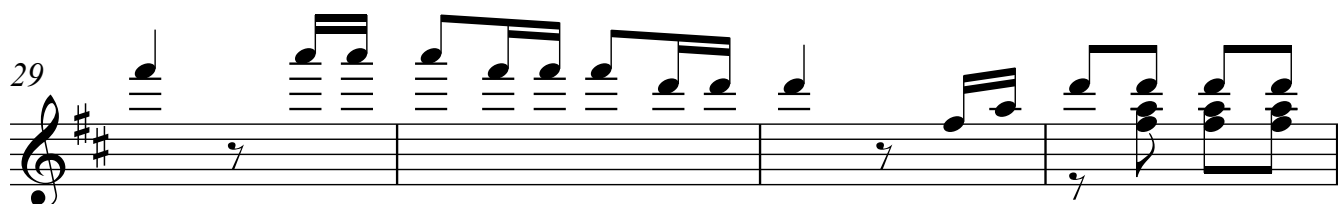
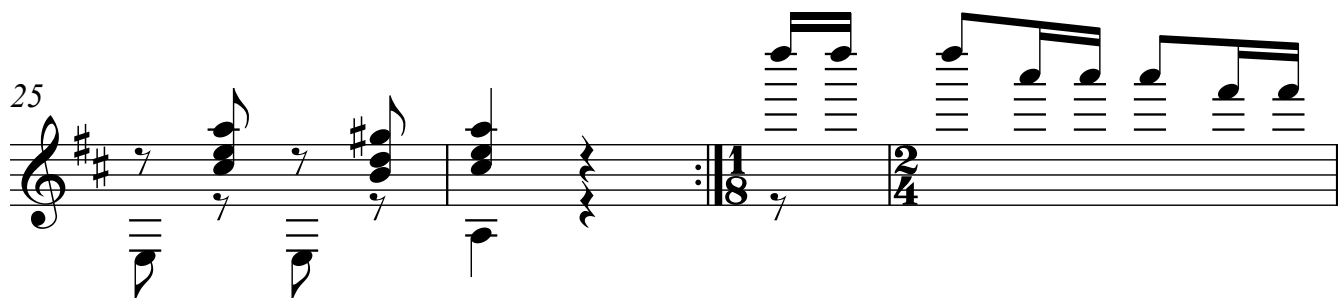
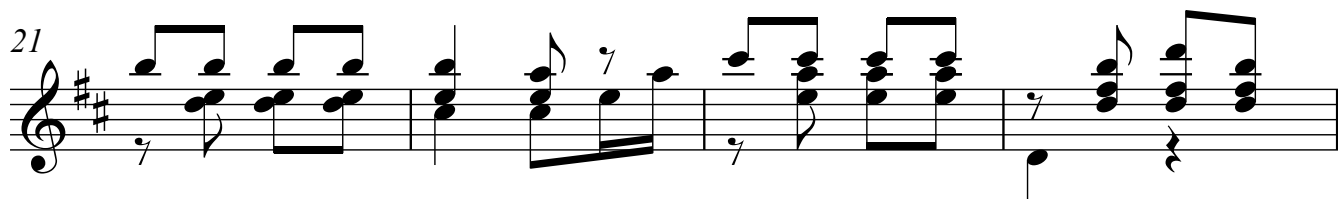
♩=140

Musical notation for the first system, starting with a treble clef, a key signature of two sharps (F# and C#), and a time signature of 1/8. It features a series of chords and melodic lines, including a 2/4 time signature change and fermatas.

Musical notation for the second system, starting with a treble clef, a key signature of two sharps (F# and C#), and a time signature of 1/8. It features a series of chords and melodic lines, including a 2/4 time signature change and fermatas.

Musical notation for the third system, starting with a treble clef, a key signature of two sharps (F# and C#), and a time signature of 1/8. It features a series of chords and melodic lines, including a 2/4 time signature change and fermatas.

Musical notation for the fourth system, starting with a treble clef, a key signature of two sharps (F# and C#), and a time signature of 1/8. It features a series of chords and melodic lines, including a 2/4 time signature change and fermatas.



46

51

56

61

65

70