

F. No 78.

(F. No 133)

No. 133

Morceau de Salon

pour le Basson (Basson)

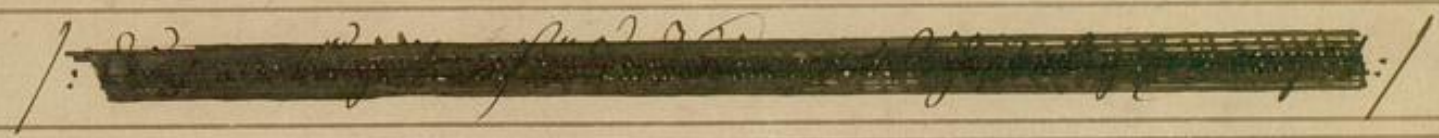
avec accompagnement de Piano

par

J. W. Halliwell.

opus 290.

290.



(Fugue finisse avec!)

Fagotto solo.  $\text{S:} \flat \text{ } \frac{12}{8}$  *Larghetto.*

Pianoforte. *po.*



*dolce.*



*ppp.*



*fo.* *ppp. ritar.:*



*ppp.*



Handwritten musical notation on a single staff, featuring a melodic line with a dynamic marking of *fo.* (forte) and a complex, rapid passage of notes.

Handwritten musical notation on two staves. The upper staff contains a melodic line with a dynamic marking of *mf.* (mezzo-forte). The lower staff contains a bass line with a dynamic marking of *ff.* (fortissimo).

Handwritten musical notation on a single staff, continuing the melodic line with a dynamic marking of *ff.* (fortissimo).

Handwritten musical notation on two staves. The upper staff contains a melodic line with a dynamic marking of *ff.* (fortissimo). The lower staff contains a bass line with a dynamic marking of *ff.* (fortissimo).

Handwritten musical notation on a single staff, featuring a melodic line with a dynamic marking of *po.* (piano) and a dynamic marking of *ritardando*.

Handwritten musical notation on two staves. The upper staff contains a melodic line with a dynamic marking of *po.* (piano). The lower staff contains a bass line with a dynamic marking of *po.* (piano).

Handwritten musical notation on a single staff, featuring a melodic line with a dynamic marking of *dolce.* (dolce).

Handwritten musical notation on two staves. The upper staff contains a melodic line with a dynamic marking of *ppp.* (pianissimo). The lower staff contains a bass line with a dynamic marking of *ppp.* (pianissimo).

*f.*

*ppp.* *ritar.* *Allegro appassionato.*

*f.* *risoluto.*

Handwritten musical notation on a single staff. It begins with a treble clef, a key signature of two sharps (F# and C#), and a common time signature (C). The notation includes various note values, rests, and dynamic markings such as *mf.* and *pp.* There are also some handwritten annotations above the staff, possibly indicating fingerings or performance instructions.

Handwritten musical notation for a grand staff (treble and bass clefs). The piece continues with complex rhythmic patterns and dynamic markings like *pp.* and *mf.* The notation is dense with many notes and rests.

Handwritten musical notation on a single staff, continuing the piece. It features a series of notes with dynamic markings such as *pp.* and *mf.*

Handwritten musical notation for a grand staff. The notation is intricate, with many notes and rests, and includes dynamic markings like *pp.* and *mf.*

Handwritten musical notation on a single staff, showing a continuation of the melodic line with dynamic markings such as *pp.* and *mf.*

Handwritten musical notation for a grand staff. The piece continues with complex rhythmic patterns and dynamic markings like *pp.* and *mf.*

Handwritten musical notation on a single staff, featuring a series of notes with dynamic markings such as *pp.* and *mf.*

Handwritten musical notation for a grand staff. The piece concludes with complex rhythmic patterns and dynamic markings like *pp.* and *mf.*



*poco.*

*poco.*

*poco.*

*poco.*

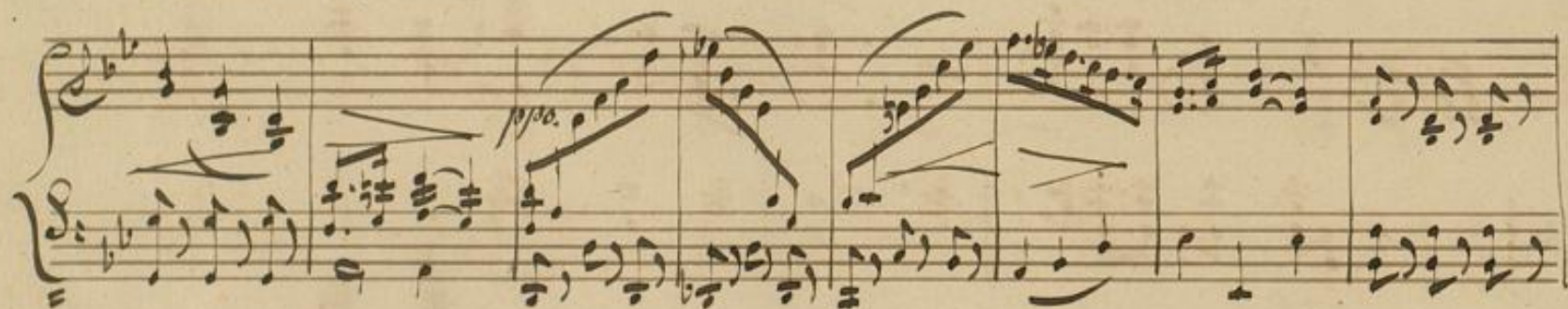
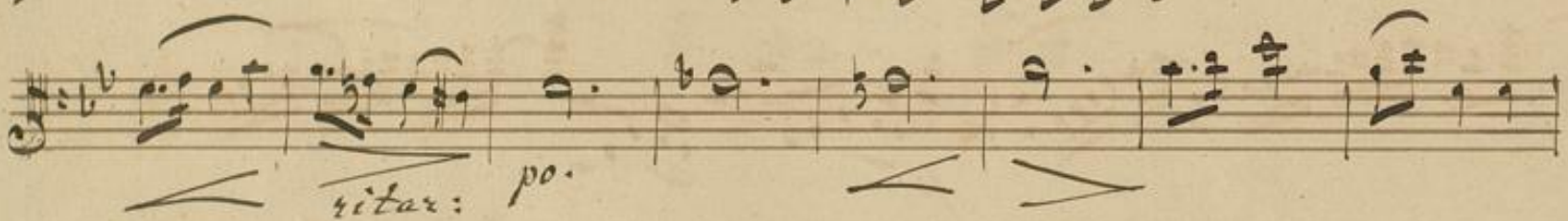
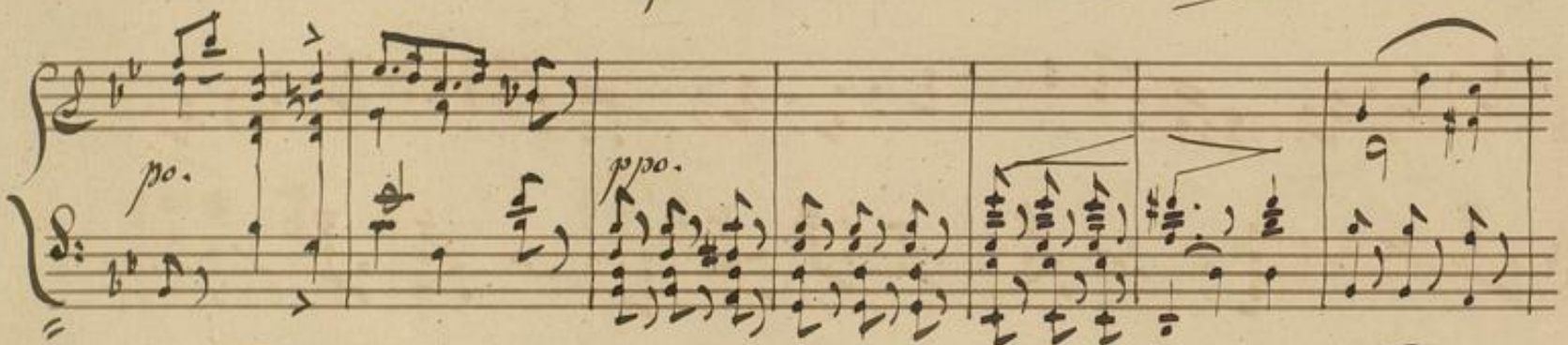
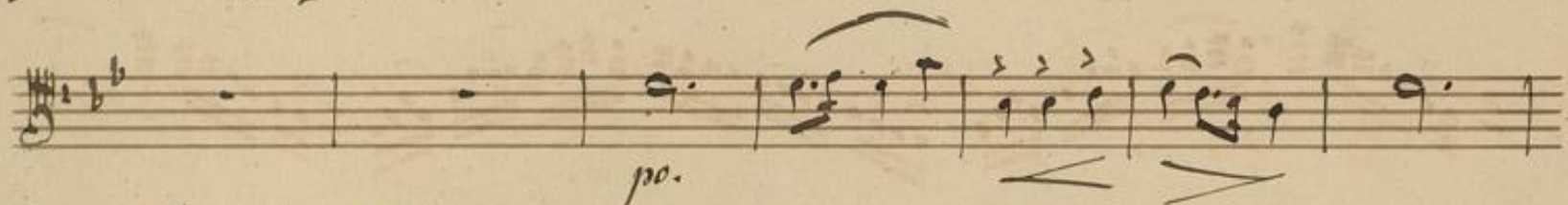
*poco.*

*poco.*

*poco.*

*Alllegretto grazioso. Leggiero.*

*poco.*





*f. brillante*

*f.*  
*mf.*

*p.*

*pp.*

*f.*

*f.*

*ritardando.*

*ritar: f.* *pp.*

Handwritten musical notation on a single staff, featuring a treble clef, a key signature of one flat, and a common time signature. The notation includes a series of chords and melodic lines with slurs. Dynamic markings 'f.' and 'p.' are present.

Handwritten musical notation for a grand staff (treble and bass clefs). The right hand plays a complex, rapid melodic line with many slurs, while the left hand provides a steady accompaniment. A 'p.' marking is visible.

Handwritten musical notation on a single staff, continuing the melodic line from the previous system. It features slurs and a 'stringendo.' marking.

Handwritten musical notation for a grand staff. The right hand has a melodic line with slurs, and the left hand has a rhythmic accompaniment. A 'p.' marking is present.

Handwritten musical notation on a single staff, starting with a 'f.' marking and ending with a 'Tempo 1mo.' marking.

Handwritten musical notation for a grand staff. The right hand has a melodic line with slurs, and the left hand has a rhythmic accompaniment.

Handwritten musical notation on a single staff, starting with a 'ritoluto.' marking and a double bar line.

Handwritten musical notation for a grand staff. The right hand has a melodic line with slurs, and the left hand has a rhythmic accompaniment.

*mf.*

*p.*

*ritar. in tempo.*

*p.*

*con molto espressione).*

*p.*

*f.* *p.*

*p.*

Handwritten musical notation on a single staff, featuring a treble clef, a key signature of one sharp (F#), and a 3/4 time signature. The music consists of a series of eighth and sixteenth notes, some beamed together. A dynamic marking *pp.* is present below the staff.

Handwritten musical notation on a grand staff (treble and bass clefs). The music features a complex rhythmic pattern with many beamed notes. A dynamic marking *pp.* is visible above the staff.

Handwritten musical notation on a single staff, featuring a treble clef and a key signature of one sharp. The music is characterized by dense, rapid sixteenth-note passages. A dynamic marking *ff.* is written below the staff.

Handwritten musical notation on a grand staff. The music is more melodic and features a mix of eighth and sixteenth notes. A dynamic marking *pp.* is written below the staff.

Handwritten musical notation on a single staff, featuring a treble clef and a key signature of one sharp. The music consists of a series of beamed sixteenth notes. A dynamic marking *pp.* is written below the staff.

Handwritten musical notation on a grand staff. The music features a mix of eighth and sixteenth notes. A dynamic marking *pp.* is written below the staff.

Handwritten musical notation on a grand staff. The music features a mix of eighth and sixteenth notes. A dynamic marking *pp.* is written below the staff.

Handwritten musical notation on a single staff, featuring a treble clef and a key signature of one sharp. The music consists of a series of beamed sixteenth notes. A dynamic marking *pp.* is written below the staff.

Handwritten musical notation on a grand staff. The music features a mix of eighth and sixteenth notes. A dynamic marking *pp.* is written below the staff. The word *congrui* is written above the staff.

Handwritten musical notation on a grand staff. The music features a mix of eighth and sixteenth notes. A dynamic marking *pp.* is written below the staff.

*f.*

*f.*

*f.*

*f.*

*ritardando.*

*tremolando*

*con tutta la forza.*

*f.*