

5 69
1072

А. ЯНЬШИНОВ

ГАММЫ И ТРЕЗВУЧИЯ

В 1-й ПОЗИЦИИ

ДЛЯ НАЧИНАЮЩИХ СКРИПАЧЕЙ

Одобрено струнной кафедрой
Московской государственной консерватории



**ГОСУДАРСТВЕННОЕ
МУЗЫКАЛЬНОЕ ИЗДАТЕЛЬСТВО
МОСКВА — 1935**

26 27 28 29 30 31

ц. ср. ц. ср. нп. нп. ср. нп.

Гаммы, начинающиеся на струне соль 2^м и 3^м пальцем как мажорные, так и минорные, при исполнении их legato на два смычка вниз и вверх, играть так:

так написано

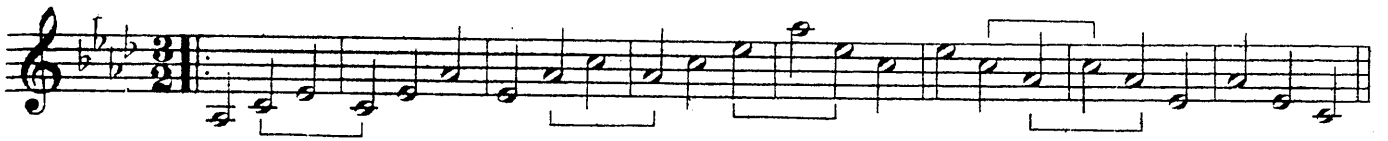
так исполнять

ГАММЫ И ТРЕЗВУЧИЯ.

G-dur Соль-мажор

ц. ц. ц. ц.

d-moll соль - минор



as-moll ля б - минор



First musical staff in the system, featuring a treble clef, a key signature of three flats (B-flat, E-flat, A-flat), and a 3/2 time signature. The melody consists of eighth and quarter notes with various phrasing slurs.

Second musical staff in the system, continuing the melody with quarter and eighth notes, including some chords with a '0' (open string) marking.

Third musical staff in the system, featuring a treble clef and a common time signature. The melody continues with quarter and eighth notes.

Fourth musical staff in the system, featuring a treble clef and a 3/4 time signature. The melody continues with quarter and eighth notes.

A - dur Ля - мажор

Fifth musical staff in the system, featuring a treble clef and a common time signature. The key signature changes to three sharps (F#, C#, G#). The melody includes a four-measure rest marked with a '4'.

Sixth musical staff in the system, continuing the melody with quarter and eighth notes, including a '0' marking.

Seventh musical staff in the system, continuing the melody with quarter and eighth notes, including a '4' marking.

Eighth musical staff in the system, continuing the melody with quarter and eighth notes, including a '4' marking.

Ninth musical staff in the system, featuring a treble clef and a 3/2 time signature. The melody continues with quarter and eighth notes, including a '4' marking.

Tenth musical staff in the system, continuing the melody with quarter and eighth notes, including a '4' marking.

а - толь ля - минор

В - дур Си б - мажор

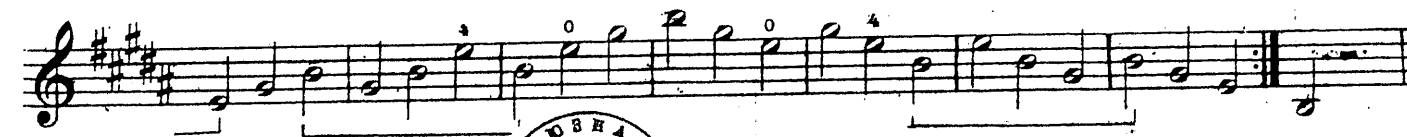


b - moll си б - минор.





H-dur Си-мажор



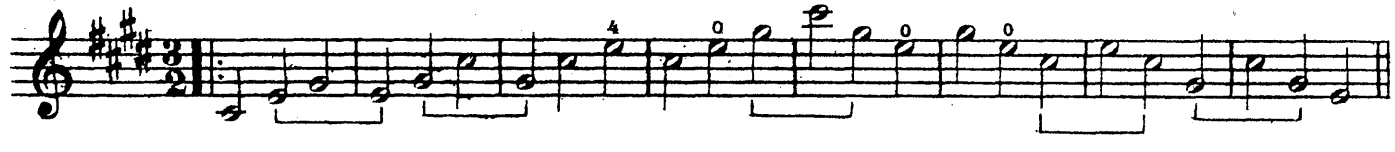
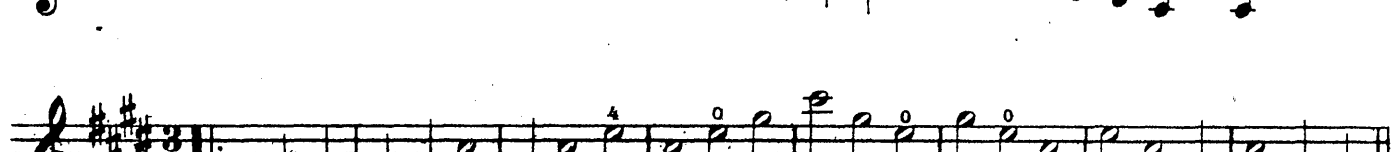
h-moll си-миноп

C - dur До - мажор

c - moll до - минор



cis- moll до#-мажор

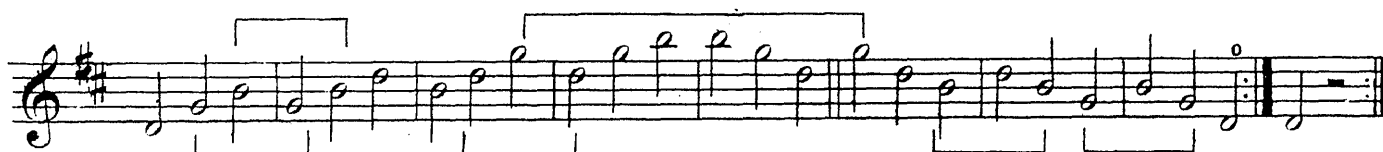
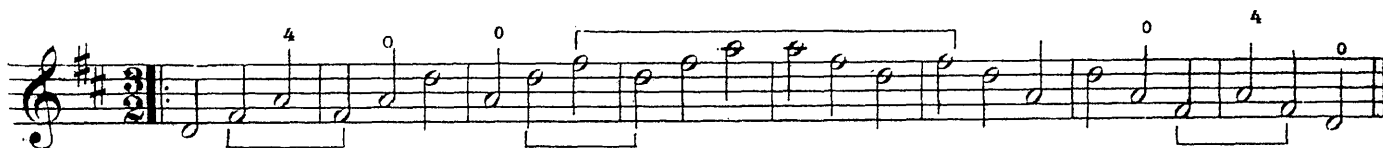
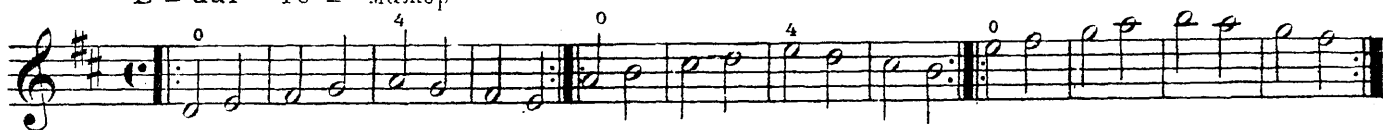




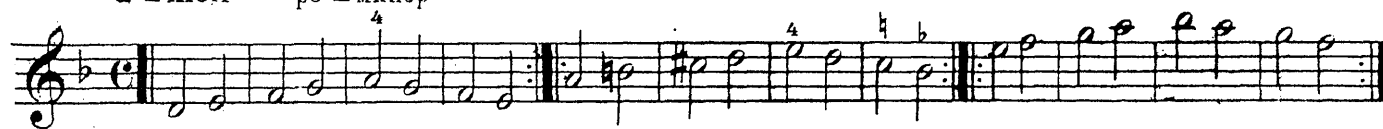
Des-dur Реb-мажор



D - dur Ре - мажор

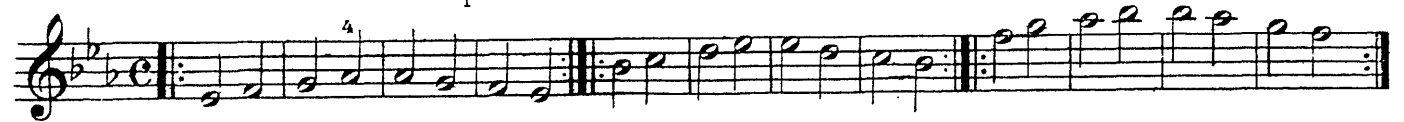


d - moll ре - минор



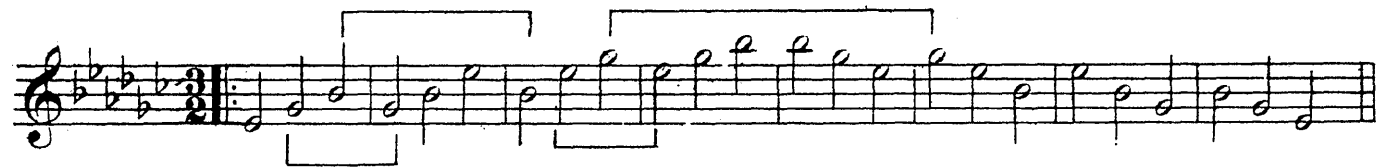
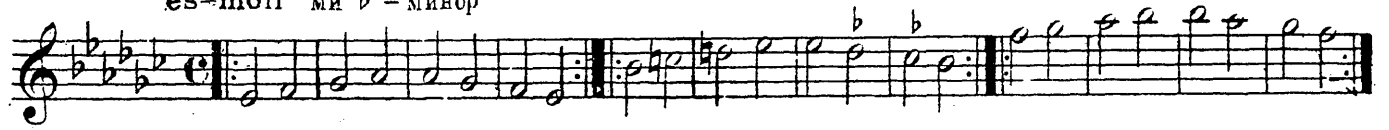


Es-dur Ми-♭ мажор

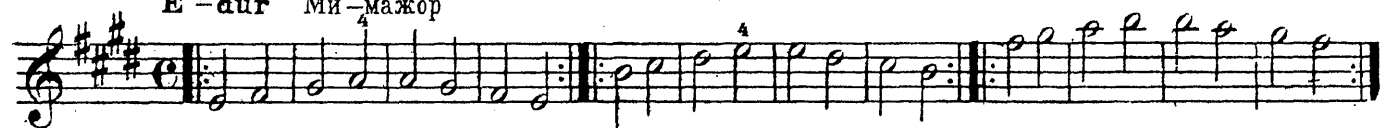




es-moll ми б - минор

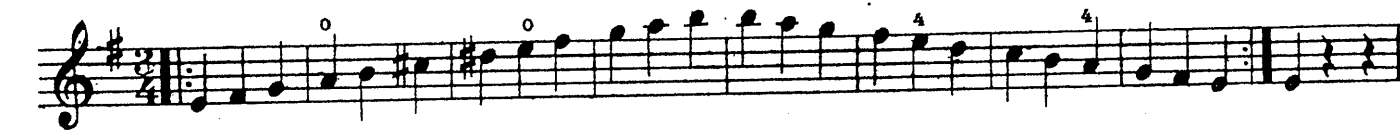
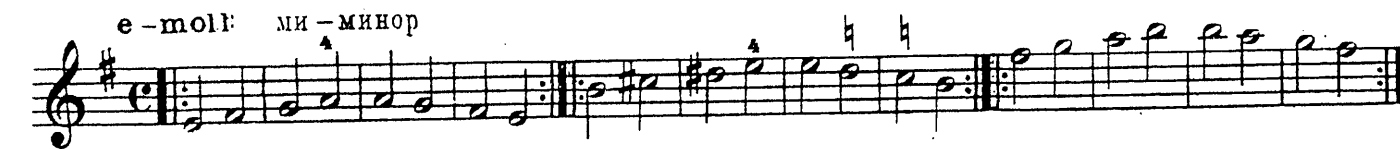


E-dur Ми-мажор





e - moll: ми - минор

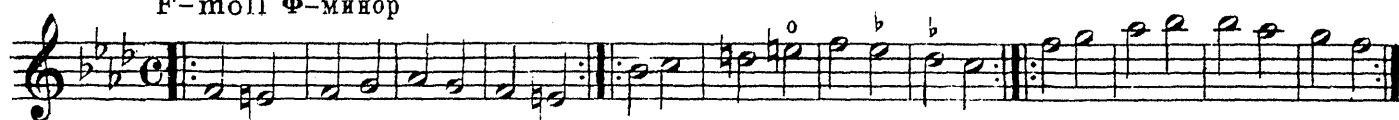




F-dur Фа-мажор



F-moll Ф-минор





Fis-dur Фа#-мажор

