

(Hob. XIX)

32 PIEZAS DE RELOJ MÚSICAL

Nº 10(a)


TRANSCRIPCIÓN: LUIS ALVAREZ

HAYDN (JOSEPH)

(1733-1809)

♩ = 120

Flauta



Musical notation for Flute part, starting with a treble clef, a key signature of one sharp (F#), and a 4/4 time signature. The melody begins with a quarter rest, followed by a quarter note G4, an eighth note A4, and a quarter note B4. The time signature changes to 3/4 for the next two measures, with notes G4, A4, and B4. The piece concludes with a quarter note G4, an eighth note A4, and a quarter note B4.

Guitarra



Musical notation for Guitar part, starting with a treble clef, a key signature of one sharp (F#), and a 4/4 time signature. The first measure contains a whole rest. The time signature changes to 3/4 for the next two measures, with chords G4, A4, and B4. The piece concludes with chords G4, A4, and B4 in the 4/4 time signature.

Fl.



Musical notation for Flute part, starting with a treble clef, a key signature of one sharp (F#), and a 4/4 time signature. The melody begins with a quarter note G4, an eighth note A4, and a quarter note B4. The time signature changes to 3/4 for the next two measures, with notes G4, A4, and B4. The piece concludes with a quarter note G4, an eighth note A4, and a quarter note B4.

Guit.



Musical notation for Guitar part, starting with a treble clef, a key signature of one sharp (F#), and a 4/4 time signature. The melody begins with chords G4, A4, and B4. The time signature changes to 3/4 for the next two measures, with chords G4, A4, and B4. The piece concludes with a whole note chord G4, A4, and B4.

7

Fl.

Guit.

10

Fl.

Guit.

13

Fl.

Guit.

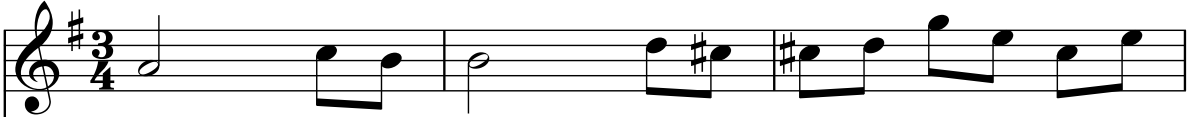
16

Fl.

Guit.

19

Fl.



Guit.



22

Fl.



Guit.



25

Fl.



Guit.



28

Fl.



Guit.

