

# HWV - 386b

## SONATA

### 4.- ALEGRO

TRANSCRIPCIÓN: LUIS ALVAREZ

HANDEL (1685-1759)  
(GEORGE FRIEDRICH)

$\text{♩} = 140$

*tr*

**Guitarra 1**

**Guitarra 2**

$\text{♩} = 140$

**Guitarra 3**

4

**Guit.1**

**Guit.2**

*tr*

**Guit.3**

7

**Guit.1**

**Guit.2**

**Guit.3**

Handwritten musical notation for measures 7-9. Guit.1 has rests in measures 7 and 8, then a quarter note G4 and a dotted quarter note A4 in measure 9. Guit.2 has a half note G4 in measure 7, a half note A4 in measure 8, and a quarter note G4, quarter note F#4, quarter note E4, quarter note D4, quarter note C4, and quarter note B3 in measure 9. Guit.3 has a half note G3 in measure 7, a half note A3 in measure 8, and a quarter note G3, quarter note F#3, quarter note E3, quarter note D3, quarter note C3, and quarter note B2 in measure 9.

10

**Guit.1**

**Guit.2**

**Guit.3**

Handwritten musical notation for measures 10-12. Guit.1 has a half note G4 with a trill in measure 10, a half note A4 in measure 11, and a quarter note G4, quarter note F#4, quarter note E4, quarter note D4, quarter note C4, and quarter note B3 in measure 12. Guit.2 has a half note G4 with a trill in measure 10, a half note A4 in measure 11, and a quarter note G4, quarter note F#4, quarter note E4, quarter note D4, quarter note C4, and quarter note B3 in measure 12. Guit.3 has a half note G3 in measure 10, a half note A3 in measure 11, and a quarter note G3, quarter note F#3, quarter note E3, quarter note D3, quarter note C3, and quarter note B2 in measure 12.

13

**Guit.1**

**Guit.2**

**Guit.3**

Handwritten musical notation for measures 13-15. Guit.1 has a half note G4 in measure 13, a half note A4 in measure 14, and a quarter note G4, quarter note F#4, quarter note E4, quarter note D4, quarter note C4, and quarter note B3 in measure 15. Guit.2 has a half note G4 in measure 13, a half note A4 in measure 14, and a quarter note G4, quarter note F#4, quarter note E4, quarter note D4, quarter note C4, and quarter note B3 in measure 15. Guit.3 has a half note G3 in measure 13, a half note A3 in measure 14, and a quarter note G3, quarter note F#3, quarter note E3, quarter note D3, quarter note C3, and quarter note B2 in measure 15.

16

**Guit.1**

**Guit.2**

**Guit.3**

Handwritten musical score for measures 16-18. The key signature is two sharps (F# and C#). Guit.1 (treble clef) plays a melodic line with a trill on the final note. Guit.2 (treble clef) plays a continuous eighth-note melody. Guit.3 (treble clef) plays a bass line with eighth notes and a low octave on the final measure.

19

**Guit.1**

**Guit.2**

**Guit.3**

Handwritten musical score for measures 19-21. The key signature is two sharps (F# and C#). Guit.1 (treble clef) has whole rests. Guit.2 (treble clef) plays a rising and falling eighth-note melody. Guit.3 (treble clef) plays a steady eighth-note bass line.

22

**Guit.1**

**Guit.2**

**Guit.3**

Handwritten musical score for measures 22-24. The key signature is two sharps (F# and C#). Guit.1 (treble clef) plays a melodic line with slurs. Guit.2 (treble clef) plays whole notes. Guit.3 (treble clef) plays a steady eighth-note bass line.

25

**Guit.1**

**Guit.2**

**Guit.3**

Measures 25-27. Guit.1: Treble clef, key of D major. Measure 25: quarter rest, quarter D4, quarter E4, quarter F#4. Measure 26: quarter G#4, quarter A5, quarter B5, quarter C6. Measure 27: quarter D6, quarter E6, quarter F#6, quarter G7. Guit.2: Treble clef, key of D major. Measure 25: half D4. Measure 26: dotted half D4. Measure 27: quarter D4. Guit.3: Treble clef, key of D major. Measure 25: quarter D4. Measure 26: quarter E4. Measure 27: quarter F#4.

28

**Guit.1**

**Guit.2**

**Guit.3**

Measures 28-30. Guit.1: Treble clef, key of D major. Measure 28: quarter D4, quarter E4, quarter F#4, quarter G#4. Measure 29: quarter A5, quarter B5, quarter C6, quarter D6. Measure 30: dotted half D6. Guit.2: Treble clef, key of D major. Measure 28: quarter D4. Measure 29: quarter E4, quarter F#4, quarter G#4. Measure 30: quarter A5, quarter B5, quarter C6, quarter D6. Guit.3: Treble clef, key of D major. Measure 28: quarter D4. Measure 29: quarter E4. Measure 30: quarter F#4.

31

**Guit.1**

**Guit.2**

**Guit.3**

Measures 31-33. Guit.1: Treble clef, key of D major. Measure 31: dotted half D4. Measure 32: quarter D4, quarter E4, quarter F#4, quarter G#4. Measure 33: quarter A5, quarter B5, quarter C6, quarter D6. Guit.2: Treble clef, key of D major. Measure 31: quarter rest, quarter D4, quarter E4, quarter F#4. Measure 32: quarter G#4, quarter A5, quarter B5, quarter C6. Measure 33: quarter D6, quarter E6, quarter F#6, quarter G7. Guit.3: Treble clef, key of D major. Measure 31: quarter D4. Measure 32: quarter E4. Measure 33: quarter F#4.

34

**Guit.1**

**Guit.2**

**Guit.3**

Measures 34-36. Guit.1 and Guit.2 play a melody of quarter notes with slurs. Guit.3 plays a bass line of quarter notes with slurs.

37

**Guit.1**

**Guit.2**

**Guit.3**

Measures 37-39. Guit.1 and Guit.2 play a melody of eighth notes with slurs. Guit.3 plays a bass line of quarter notes with slurs.

40

**Guit.1**

**Guit.2**

**Guit.3**

Measures 40-42. Guit.1 plays a melody of quarter notes with a slur. Guit.2 plays a melody of eighth notes with slurs. Guit.3 plays a bass line of quarter notes with slurs.

43

**Guit.1**

**Guit.2**

**Guit.3**



46

**Guit.1**

**Guit.2**

**Guit.3**



49

**Guit.1**

**Guit.2**

**Guit.3**



52

**Guit.1**

**Guit.2**

**Guit.3**

Measures 52-54. Guit.1: Treble clef, key of D major. Measure 52: Tremolo on D4. Measure 53: D4, E4, F#4. Measure 54: G#4, A4, B4. Guit.2: Treble clef, key of D major. Measure 52: D4. Measure 53: E4, F#4. Measure 54: G#4, A4, B4. Guit.3: Treble clef, key of D major. Measure 52: D2. Measure 53: E2, F#2. Measure 54: G#2, A2, B2.

55

**Guit.1**

**Guit.2**

**Guit.3**

Measures 55-57. Guit.1: Treble clef, key of D major. Measure 55: D4, E4, F#4. Measure 56: G#4, A4, B4. Measure 57: C#5, D5, E5. Guit.2: Treble clef, key of D major. Measure 55: D4, E4, F#4. Measure 56: G#4, A4, B4. Measure 57: C#5, D5, E5. Guit.3: Treble clef, key of D major. Measure 55: D2. Measure 56: E2, F#2. Measure 57: G#2, A2, B2.

58

**Guit.1**

**Guit.2**

**Guit.3**

Measures 58-60. Guit.1: Treble clef, key of D major. Measure 58: D4, E4, F#4. Measure 59: G#4, A4, B4. Measure 60: C#5, D5, E5. Guit.2: Treble clef, key of D major. Measure 58: D4, E4, F#4. Measure 59: G#4, A4, B4. Measure 60: C#5, D5, E5. Guit.3: Treble clef, key of D major. Measure 58: D2. Measure 59: E2, F#2. Measure 60: G#2, A2, B2.

61

**Guit.1**

**Guit.2**

**Guit.3**

64

**Guit.1**

**Guit.2**

**Guit.3**

67

**Guit.1**

**Guit.2**

**Guit.3**

70

**Guit.1**

**Guit.2**

**Guit.3**

Measures 70-72: Guit.1 features a trill on the first measure, followed by a descending line. Guit.2 has a trill on the second measure, followed by a descending line. Guit.3 has a descending line.

73

**Guit.1**

**Guit.2**

**Guit.3**

Measures 73-75: Guit.1 has a descending line. Guit.2 has a descending line. Guit.3 has a descending line.

76

**Guit.1**

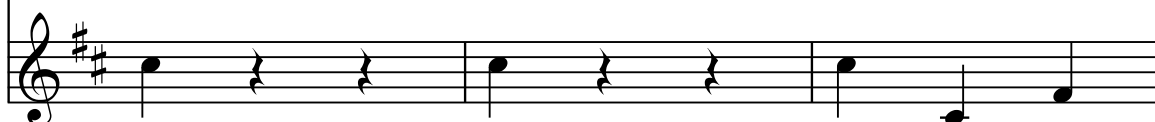
**Guit.2**

**Guit.3**

Measures 76-78: Guit.1 has a descending line. Guit.2 has a descending line. Guit.3 has a descending line.

10

79

**Guit.1****Guit.2****Guit.3**

82

**Guit.1****Guit.2****Guit.3**

85

**Guit.1****Guit.2****Guit.3**

88

**Guit.1**

**Guit.2**

**Guit.3**

91

**Guit.1**

**Guit.2**

**Guit.3**

94

**Guit.1**

**Guit.2**

**Guit.3**

97

**Guit.1**

**Guit.2**

**Guit.3**

Measures 97-99. Guit.1 and Guit.2 have melodic lines with slurs. Guit.3 has a steady eighth-note accompaniment.

100

**Guit.1**

**Guit.2**

**Guit.3**

Measures 100-102. Guit.1 and Guit.2 have melodic lines. Guit.3 has a steady eighth-note accompaniment.

103

**Guit.1**

**Guit.2**

**Guit.3**

Measures 103-105. Guit.1 and Guit.2 have melodic lines with trills. Guit.3 has a steady eighth-note accompaniment.

106

**Guit.1**

**Guit.2**

**Guit.3**

trun

110

**Guit.1**

**Guit.2**

**Guit.3**

tr

114

**Guit.1**

**Guit.2**

**Guit.3**

118 *trm*

**Guit.1**

**Guit.2**

**Guit.3**

Measures 118-121. Guit.1: Measure 118 has a tremolo. Measures 119-120 are slurred. Measure 121 has a tremolo. Guit.2: Measure 118 is a whole rest. Measures 119-120 are slurred. Measure 121 has a tremolo. Guit.3: Measures 118-120 are slurred. Measure 121 is a whole rest.

122

**Guit.1**

**Guit.2**

**Guit.3**

Measures 122-124. Guit.1: Measures 122-123 are slurred. Measure 124 is a whole rest. Guit.2: Measures 122-123 are slurred. Measure 124 is a whole rest. Guit.3: Measures 122-123 are slurred. Measure 124 is a whole rest.

125 *trm*

**Guit.1**

**Guit.2**

**Guit.3**

Measures 125-128. Guit.1: Measures 125-126 are slurred. Measure 127 is a whole rest. Measure 128 is a whole rest. Guit.2: Measures 125-126 are slurred. Measure 127 has a tremolo. Measure 128 is a whole rest. Guit.3: Measures 125-126 are slurred. Measure 127 is a whole rest. Measure 128 is a whole rest.