

# GIGUE

HAEDEL

Arrangements guitar Lados Nefous

Typographie Marilyn Mc. Tin

Analyse mélodique dramatique Abelle Nefous

G Em7 Am7 D7 G C Am7 D7 G Em7 CM7 D7

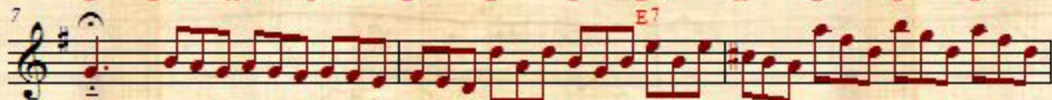
Violin  
soprano



G Em7 Am7 D7 G CM7 Bm7 Am7 D7 Bm7 CM7 D7



G Em7 Am7 CM7 D7 D G Em7 A7 D G D



A G A7 E7 A D G A D Em7 G A



A7 D A G A G D A D Em G A



D A D G A A7



Em B7 Am7 CM7 D#m7 B7 Em CM7 B7 D#m7

