

OPUS - 125

SEIS AIRES NACIONALES IRLANDESES

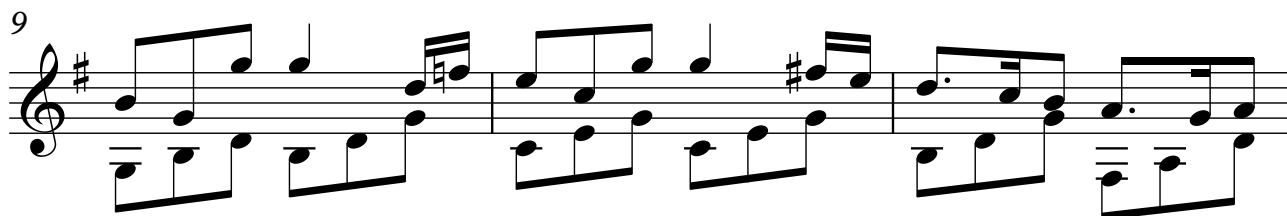
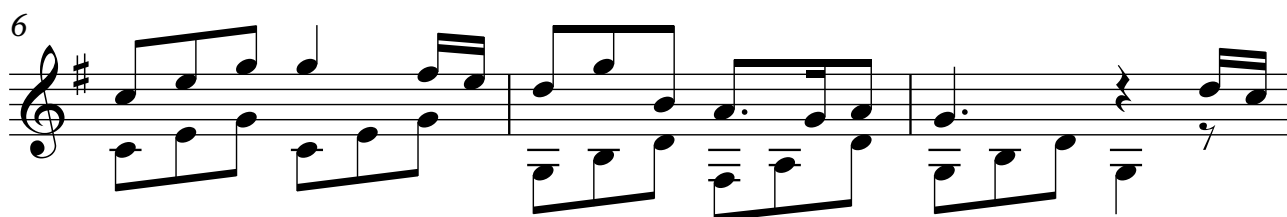
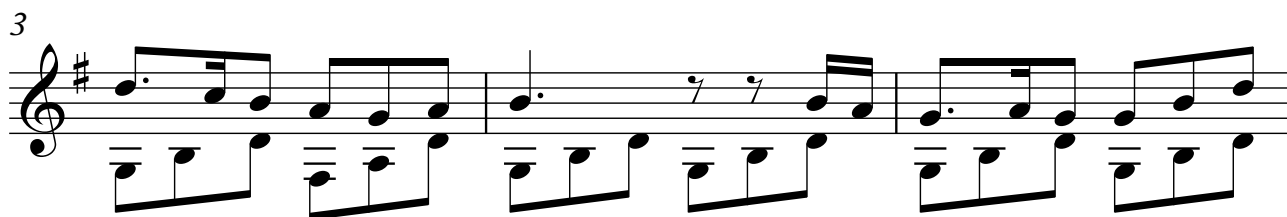
5.- MY LODGING IS ON THE COLD GROUND

TRANSCRIPCIÓN: LUIS ALVAREZ

MAURO GIULIANI

(1781 - 1829)

♩=80



15

Musical notation for measures 15 and 16. The key signature is one sharp (F#). Measure 15 consists of two staves: the upper staff has a treble clef and contains a sequence of eighth notes (F#, G, A, B, C, D, E, F#), and the lower staff has a bass clef and contains a sequence of eighth notes (C, B, A, G, F#, E, D, C). Measure 16 continues with similar eighth-note patterns in both staves, ending with a fermata over the final notes.

17

Musical notation for measures 17 and 18. Measure 17 features a treble staff with a sequence of eighth notes (F#, G, A, B, C, D, E, F#) and a bass staff with a sequence of eighth notes (C, B, A, G, F#, E, D, C). Measure 18 continues with similar eighth-note patterns, ending with a fermata over the final notes.

19

Musical notation for measures 19 and 20. Measure 19 features a treble staff with a sequence of eighth notes (F#, G, A, B, C, D, E, F#) and a bass staff with a sequence of eighth notes (C, B, A, G, F#, E, D, C). Measure 20 continues with similar eighth-note patterns, ending with a fermata over the final notes.

21

Musical notation for measures 21 and 22. Measure 21 features a treble staff with a sequence of eighth notes (F#, G, A, B, C, D, E, F#) and a bass staff with a sequence of eighth notes (C, B, A, G, F#, E, D, C). Measure 22 continues with similar eighth-note patterns, ending with a fermata over the final notes.

23

Musical notation for measures 23 and 24. Measure 23 features a treble staff with a sequence of eighth notes (F#, G, A, B, C, D, E, F#) and a bass staff with a sequence of eighth notes (C, B, A, G, F#, E, D, C). Measure 24 continues with similar eighth-note patterns, ending with a fermata over the final notes.

25

Musical notation for measures 25 and 26. Measure 25 features a treble staff with a sequence of eighth notes (F#, G, A, B, C, D, E, F#) and a bass staff with a sequence of eighth notes (C, B, A, G, F#, E, D, C). Measure 26 continues with similar eighth-note patterns, ending with a fermata over the final notes.

27

Musical notation for measures 27 and 28. Measure 27 features a treble staff with a sequence of eighth notes (F#, G, A, B, C, D, E, F#) and a bass staff with a sequence of eighth notes (C, B, A, G, F#, E, D, C). Measure 28 continues with similar eighth-note patterns, ending with a fermata over the final notes.

29

31

33

35

37

39

41

43

Musical notation for measures 43 and 44. The key signature is one sharp (F#). Measure 43 consists of two staves: the upper staff has a continuous eighth-note melody, and the lower staff has a bass line with a few notes. Measure 44 continues the melody and bass line.

45

Musical notation for measures 45 and 46. The key signature is one sharp (F#). Measure 45 continues the eighth-note melody in the upper staff and the bass line in the lower staff. Measure 46 shows a change in the bass line.

47

Musical notation for measures 47 and 48. The key signature is one sharp (F#). Measure 47 continues the eighth-note melody in the upper staff and the bass line in the lower staff. Measure 48 features a more complex bass line with some triplets.

49

Musical notation for measures 49 and 50. The key signature is one sharp (F#). Measure 49 continues the eighth-note melody in the upper staff and the bass line in the lower staff. Measure 50 features a more complex bass line with some triplets.

51

Musical notation for measures 51 and 52. The key signature is one sharp (F#). Measure 51 continues the eighth-note melody in the upper staff and the bass line in the lower staff. Measure 52 features a more complex bass line with some triplets.

53

Musical notation for measures 53 and 54. The key signature is one sharp (F#). Measure 53 continues the eighth-note melody in the upper staff and the bass line in the lower staff. Measure 54 features a more complex bass line with some triplets.

55

Musical notation for measures 55 and 56. The key signature is one sharp (F#). Measure 55 consists of two staves: the upper staff has a continuous eighth-note melody, and the lower staff has a bass line with a few notes. Measure 56 continues the melody and bass line.