

OPUS - 110

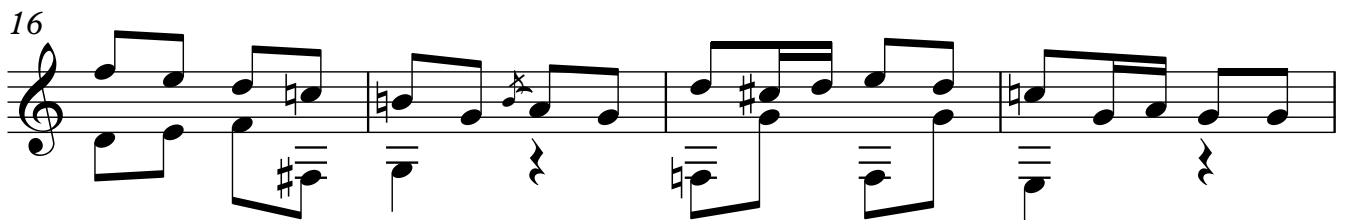
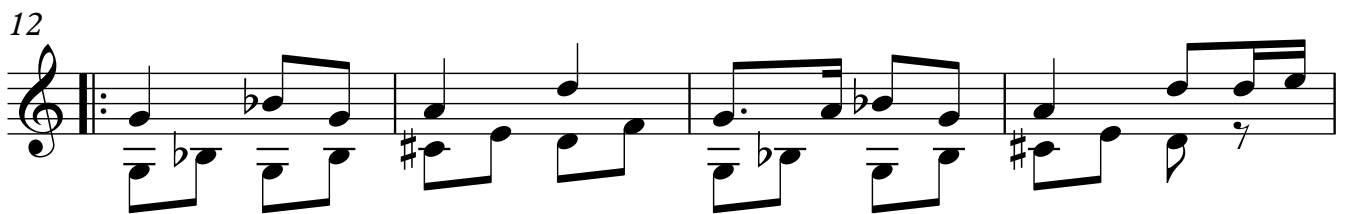
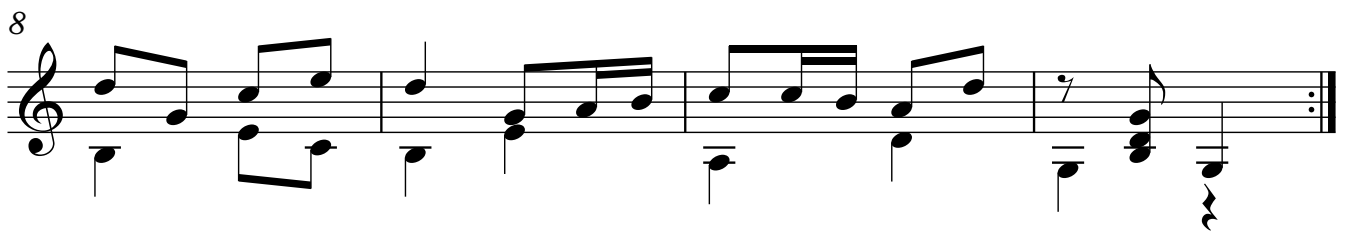
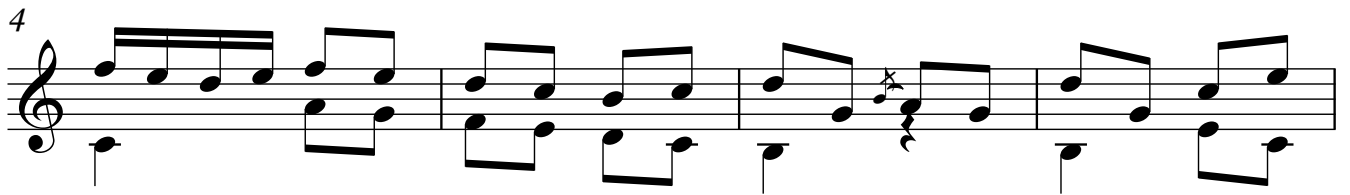
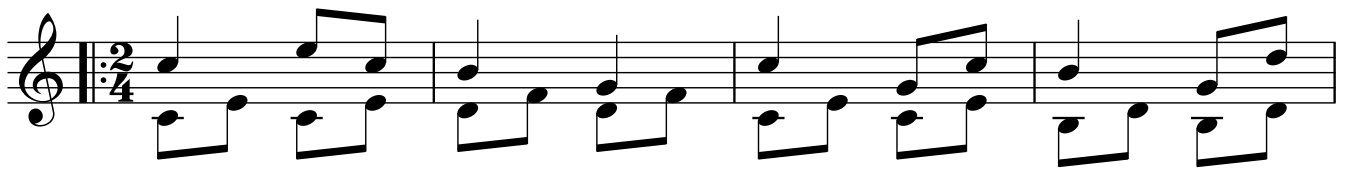
MARCHA

TRANSCRIPCIÓN: LUIS ALVAREZ

MAURO GIULIANI

(1781-1829)

ALEGRO ♩ = 110



2

20

23

VARIACIÓN 1

$\text{♩} = 100$

26

29

32

35

38

41

44

VARIACIÓN 2

47

50

53

56

59

62

65

68

72

VARIACIÓN 3

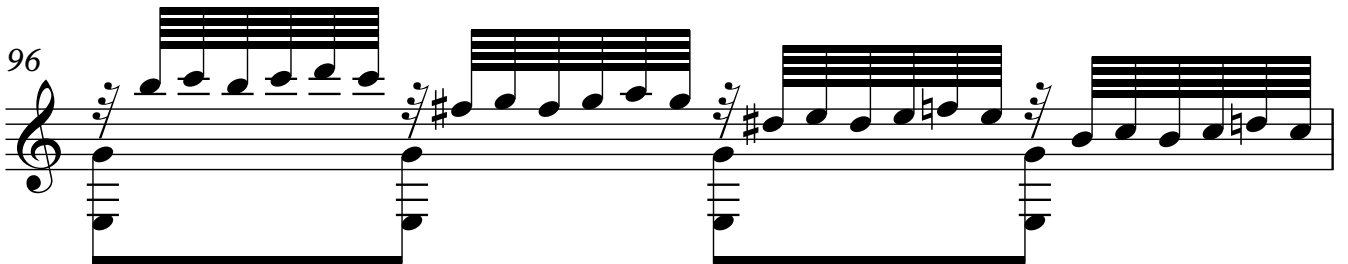
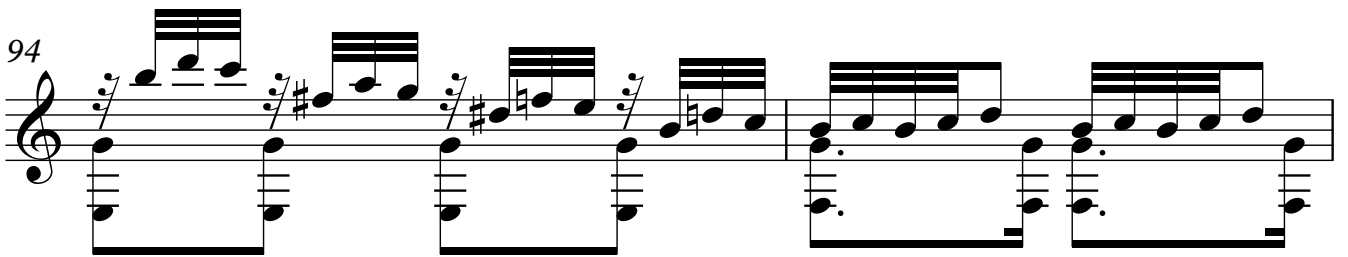
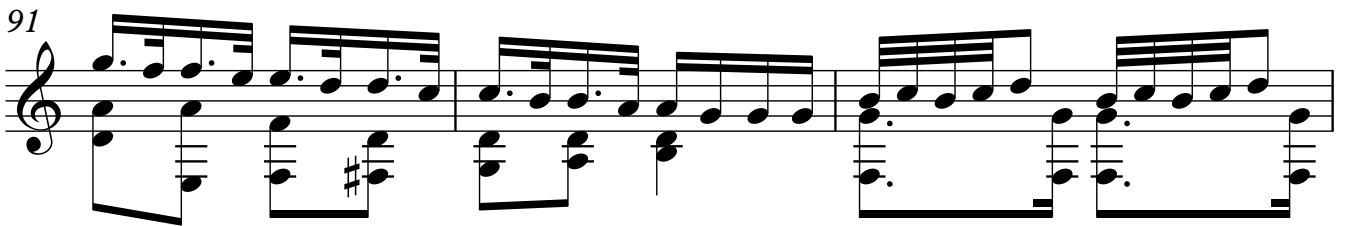
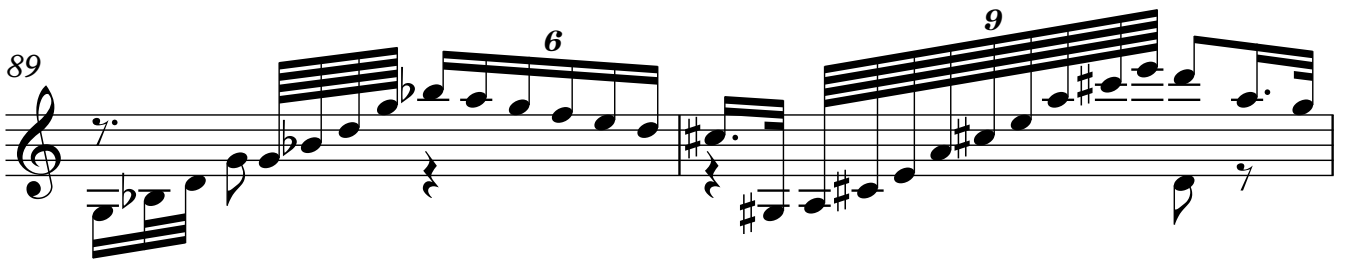
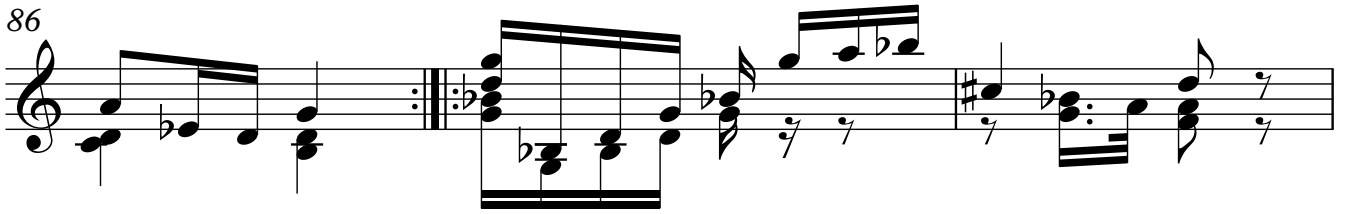
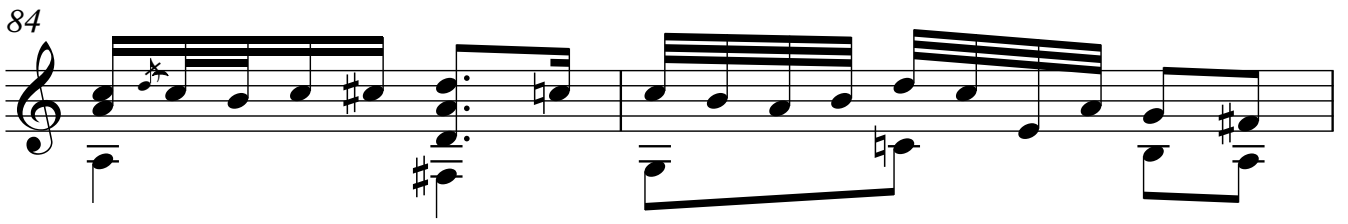
Cantabile Expressivo

♩ = 60

75

78

81



98

Musical notation for measures 98 and 99. Measure 98 begins with a treble clef and a 7/8 time signature. The melody consists of eighth and sixteenth notes, with some beamed sixteenth notes. The bass line features chords and single notes. Measure 99 continues the melodic line with similar rhythmic patterns.

100

Musical notation for measures 100 and 101. Measure 100 continues the melodic line with eighth and sixteenth notes. Measure 101 features a more complex rhythmic pattern with a 7/8 time signature and includes a fermata over the final note.

102

Musical notation for measures 102 and 103. Measure 102 is marked with a first ending bracket (1.) and a repeat sign. Measure 103 is marked with a second ending bracket (2.) and a 7/8 time signature. Both measures feature chords and single notes.

104

Musical notation for measures 104, 105, and 106. Measure 104 starts with a treble clef and a 7/8 time signature. The melody is composed of eighth and sixteenth notes. Measures 105 and 106 continue the melodic line with similar rhythmic patterns.

107

Musical notation for measures 107 and 108. Measure 107 continues the melodic line with eighth and sixteenth notes. Measure 108 features a 7/8 time signature and includes a fermata over the final note.

109

Musical notation for measures 109 and 110. Measure 109 continues the melodic line with eighth and sixteenth notes. Measure 110 features a 7/8 time signature and includes a fermata over the final note. A bracket with the number '5' is placed over the final measure, indicating a five-measure phrase.