

# OPUS - 106

## CINCO DIVERTIMENTOS

### Número 5

TRANSCRIPCIÓN: LUIS ALVAREZ

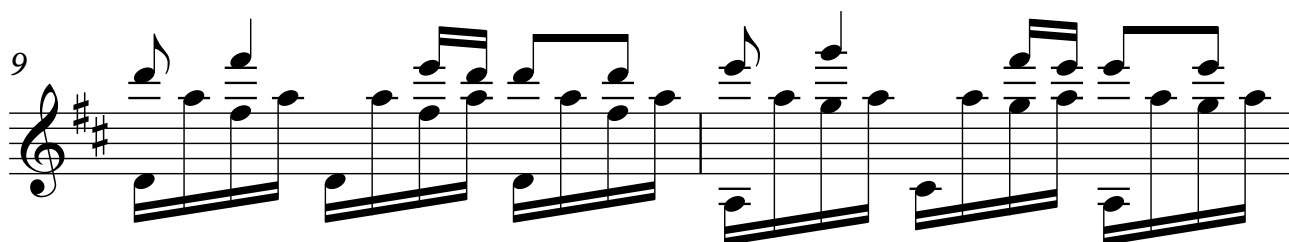
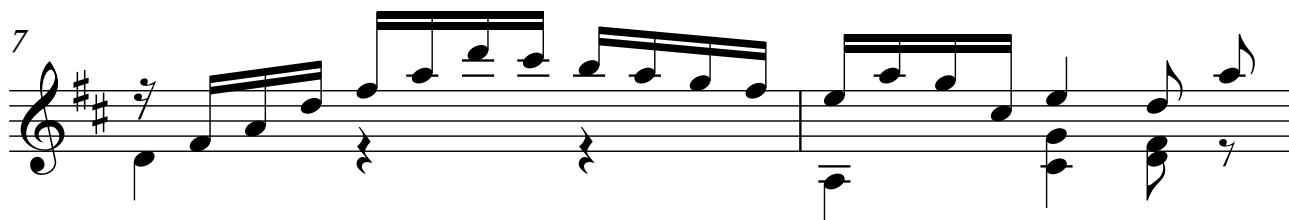
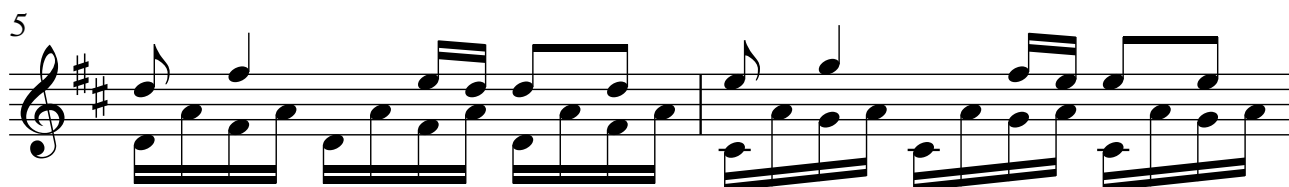
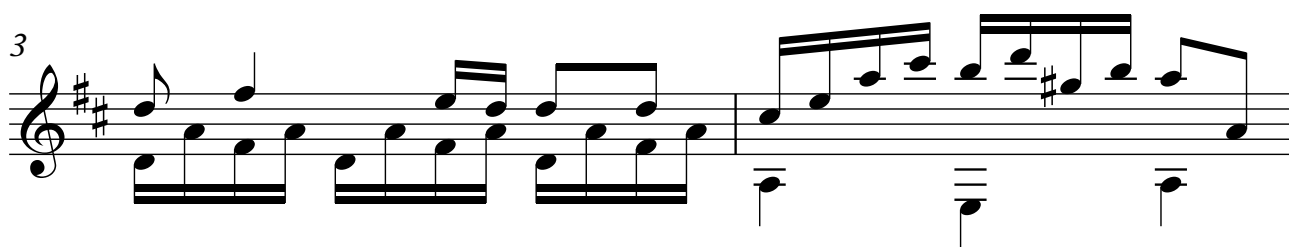
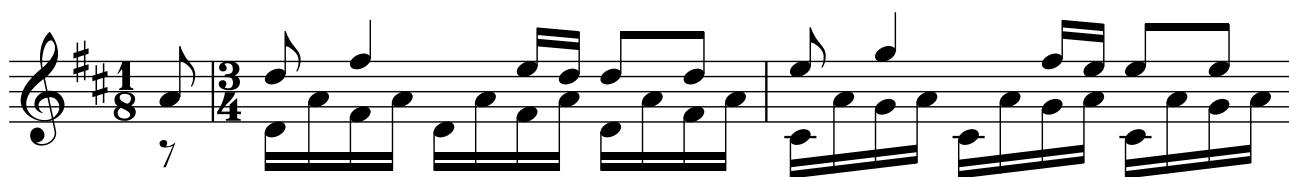
MAURO GIULIANI

POLONESA

(1781 - 1829)

ALEGRETO

♩=90



2

11

Musical notation for measures 11 and 12. The key signature is two sharps (F# and C#). The melody in the treble clef consists of eighth and sixteenth notes. The bass line features a steady eighth-note accompaniment.

13

Musical notation for measures 13 and 14. The key signature is two sharps. The melody continues with eighth and sixteenth notes, and the bass line maintains the eighth-note accompaniment.

15

Musical notation for measures 15 and 16. The key signature is two sharps. The melody features a mix of eighth and sixteenth notes, with some rests in the bass line.

17

Musical notation for measures 17 and 18. The key signature is two sharps. The melody is primarily eighth notes, and the bass line consists of eighth notes.

19

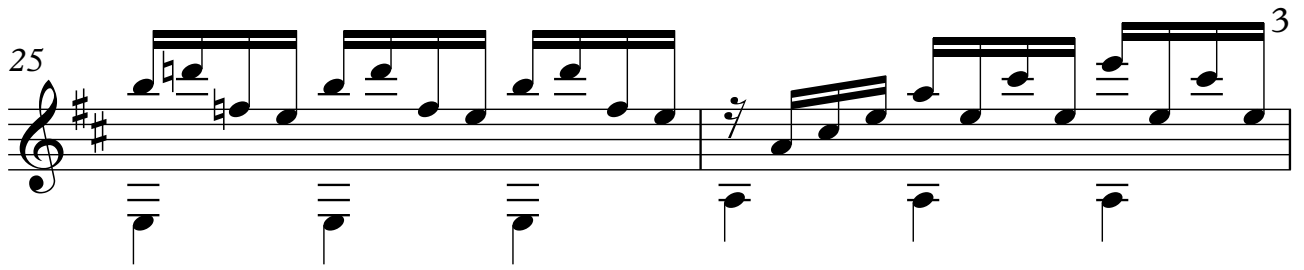
Musical notation for measures 19 and 20. The key signature is two sharps. The melody includes sixteenth-note runs, and the bass line has eighth notes.

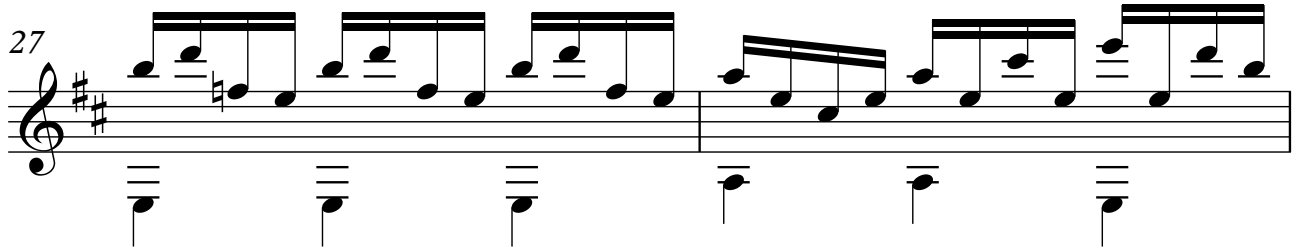
21

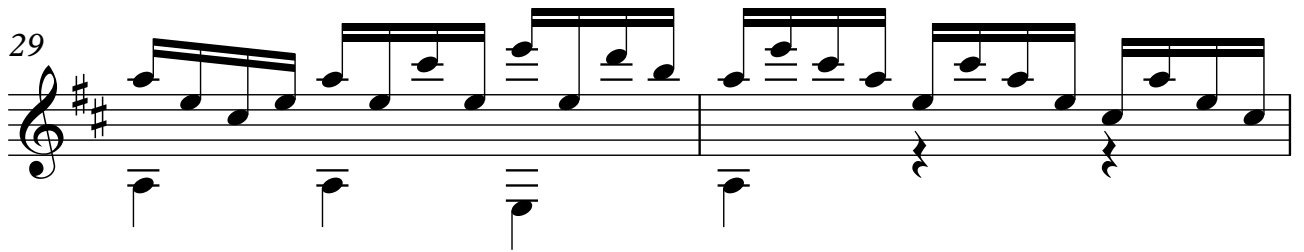
Musical notation for measures 21 and 22. The key signature is two sharps. The melody is active with eighth and sixteenth notes, and the bass line has eighth notes.

23

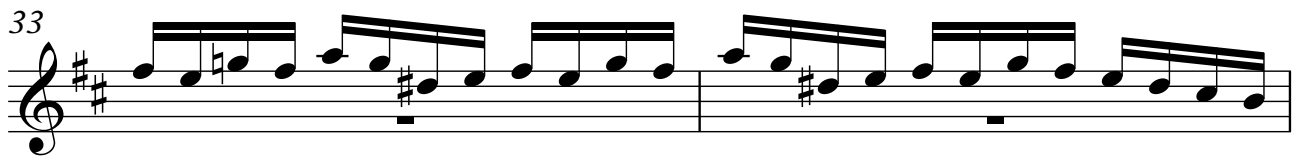
Musical notation for measures 23 and 24. The key signature is two sharps. The melody continues with eighth and sixteenth notes, and the bass line has eighth notes.

25 

27 

29 

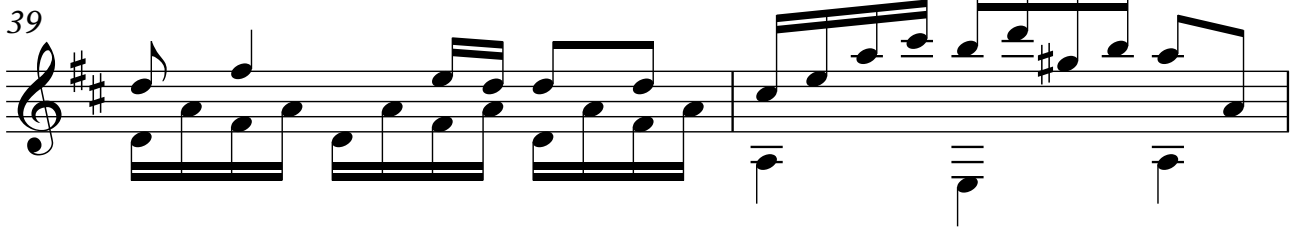
31 

33 

35 

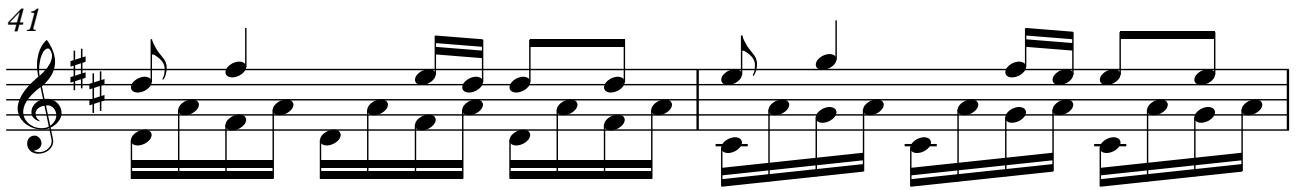
37 

39



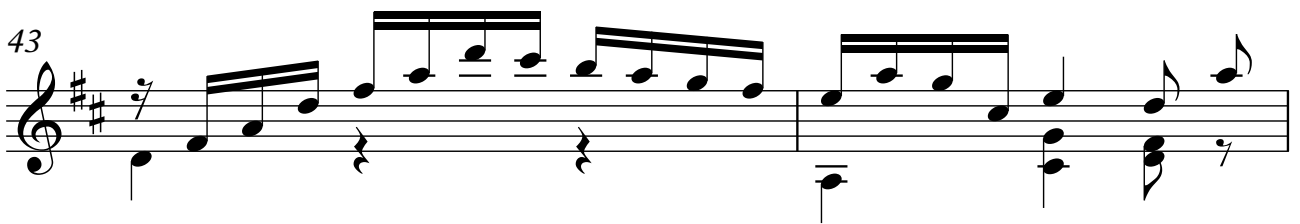
Musical notation for measures 39 and 40. The key signature is two sharps (F# and C#). The melody in the treble clef consists of eighth and quarter notes. The bass clef accompaniment features a steady eighth-note pattern in the first two measures, followed by a few chords in the final two measures.

41



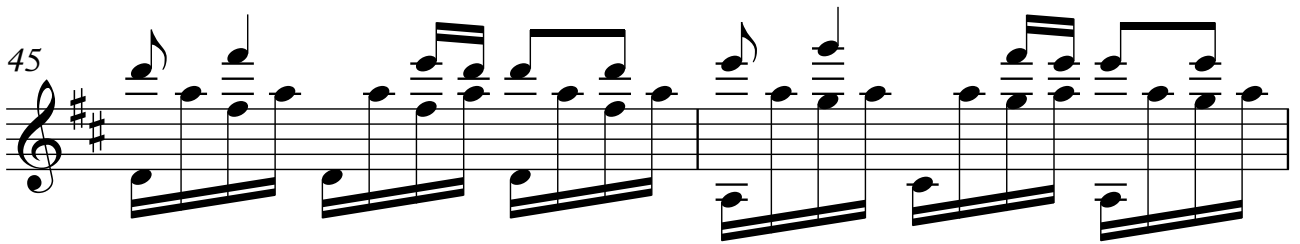
Musical notation for measures 41 and 42. The key signature is two sharps. The melody continues with eighth and quarter notes. The bass clef accompaniment maintains a consistent eighth-note rhythmic pattern.

43



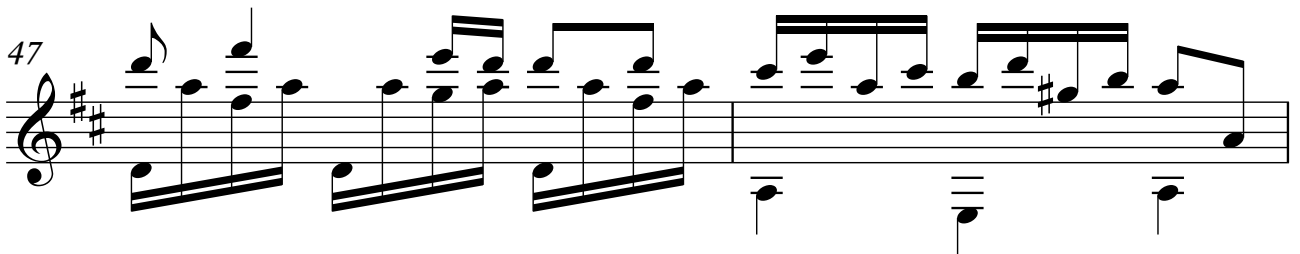
Musical notation for measures 43 and 44. Measure 43 begins with a fermata over the first measure. The melody features eighth and quarter notes. The bass clef accompaniment includes some rests and chords.

45




Musical notation for measures 45 and 46. The melody is composed of eighth and quarter notes. The bass clef accompaniment consists of eighth-note chords.

47



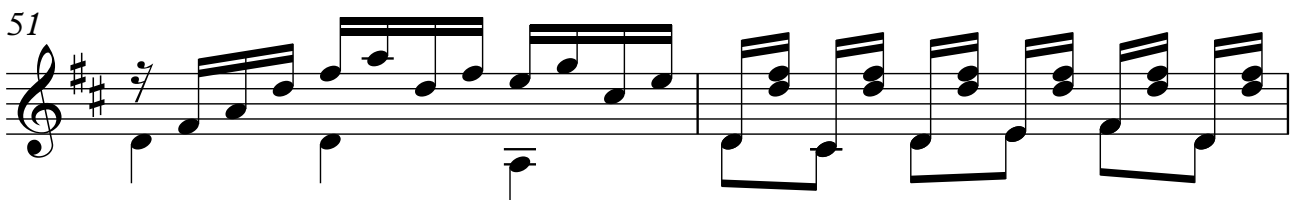
Musical notation for measures 47 and 48. The key signature changes to one sharp (F#). The melody continues with eighth and quarter notes. The bass clef accompaniment features eighth-note chords.

49



Musical notation for measures 49 and 50. The key signature is one sharp. The melody consists of eighth and quarter notes. The bass clef accompaniment maintains a steady eighth-note pattern.

51



Musical notation for measures 51 and 52. Measure 51 begins with a fermata. The melody features eighth and quarter notes. The bass clef accompaniment includes some rests and chords.

53

55

57

59

61

63

65