

OPUS - 98

ESTUDIO DILETTEVOLI

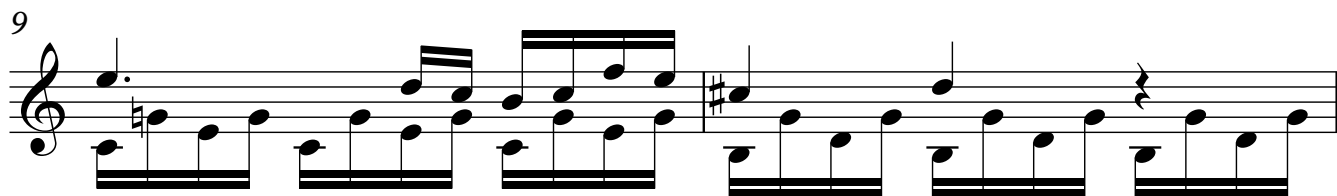
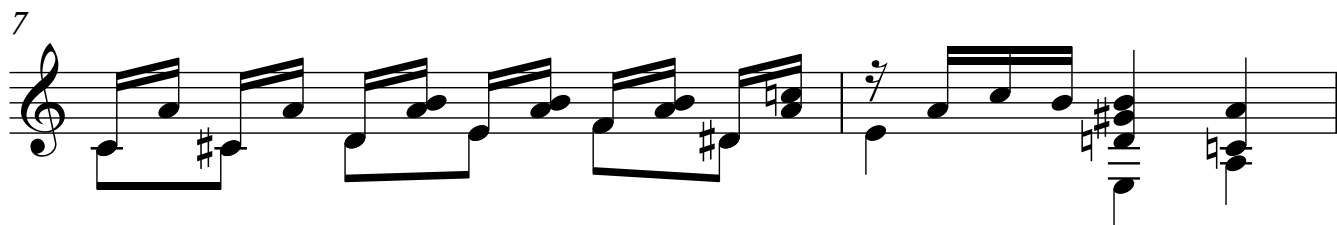
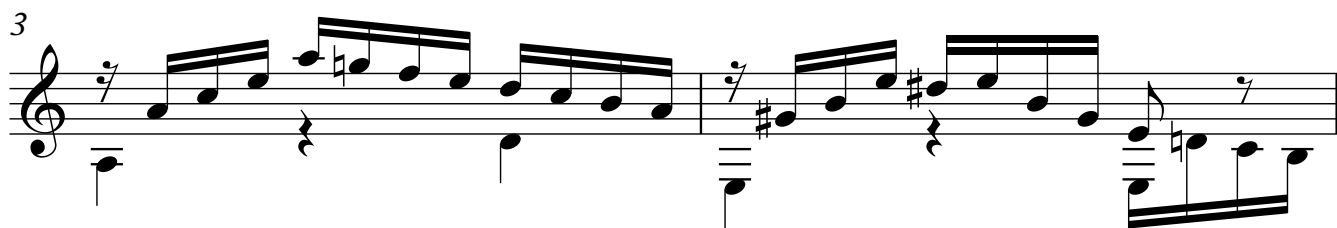
NUMERO 3

TRANSCRIPCIÓN: LUIS ALVAREZ

MAURO GIULIANI

(1781-1829)

Largueto $\text{♩} = 60$



11

Musical notation for measures 11 and 12. Measure 11 begins with a treble clef and a dotted quarter note. The melody consists of eighth and sixteenth notes, with a key signature change to one sharp (F#) in measure 12. The bass line features a steady eighth-note accompaniment.

13

Musical notation for measures 13 and 14. Measure 13 starts with a treble clef and a quarter note. The melody continues with eighth and sixteenth notes. The bass line maintains the eighth-note accompaniment.

15

Musical notation for measures 15 and 16. Measure 15 features a treble clef and a quarter note. The melody is composed of eighth and sixteenth notes. The bass line has a dotted quarter note followed by eighth notes. Measure 16 includes a repeat sign and a key signature change to two sharps (F# and C#).

17

Musical notation for measures 17 and 18. Measure 17 begins with a treble clef and a quarter note. The melody consists of eighth and sixteenth notes. The bass line features a dotted quarter note followed by eighth notes. Measure 18 includes a key signature change to one sharp (F#).

19

Musical notation for measures 19 and 20. Measure 19 starts with a treble clef and a quarter note. The melody is composed of eighth and sixteenth notes. The bass line has a dotted quarter note followed by eighth notes. Measure 20 includes a key signature change to two sharps (F# and C#).

21

Musical notation for measures 21 and 22. Measure 21 features a treble clef and a quarter note. The melody consists of eighth and sixteenth notes. The bass line has a dotted quarter note followed by eighth notes. Measure 22 includes a key signature change to one sharp (F#).

23

Musical notation for measures 23 and 24. Measure 23 starts with a treble clef and a quarter note. The melody is composed of eighth and sixteenth notes. The bass line has a dotted quarter note followed by eighth notes. Measure 24 includes a key signature change to two sharps (F# and C#) and ends with a double bar line.