

OPUS - 83

SEIS PRELUDIOS

Número 3

TRANSCRIPCIÓN: LUIS ALVAREZ

MAURO GIULIANI

(1781 - 1829)

ALEGRO MAESTOSO

♩=100

3

5

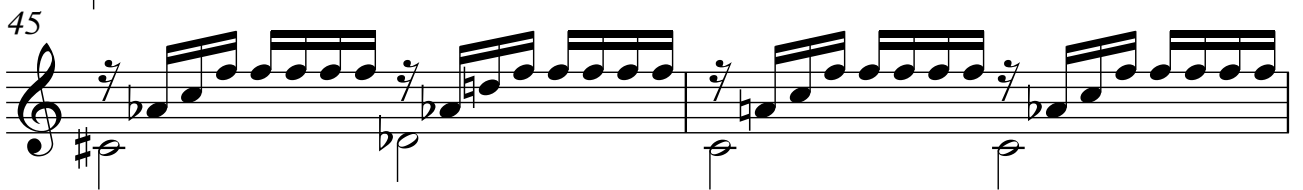
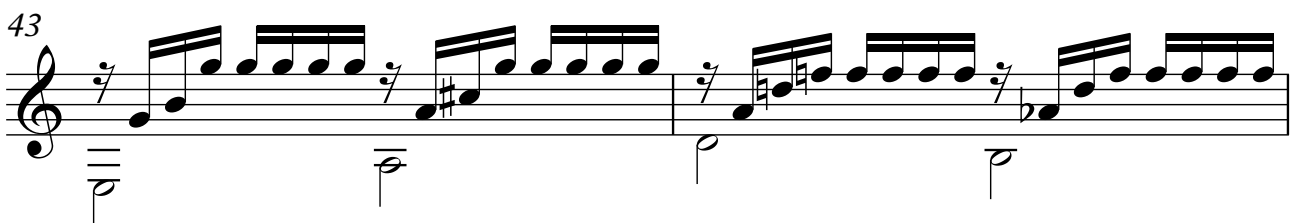
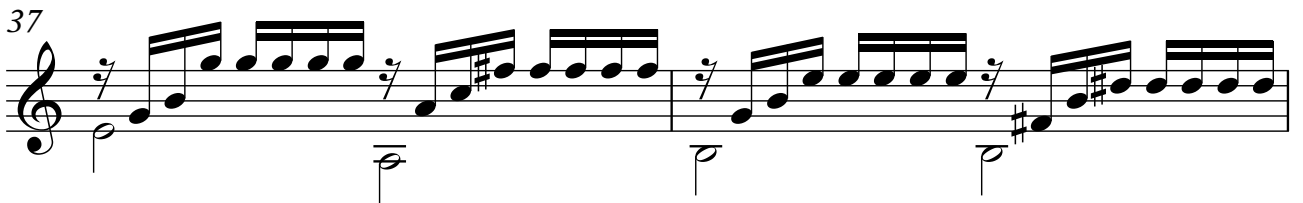
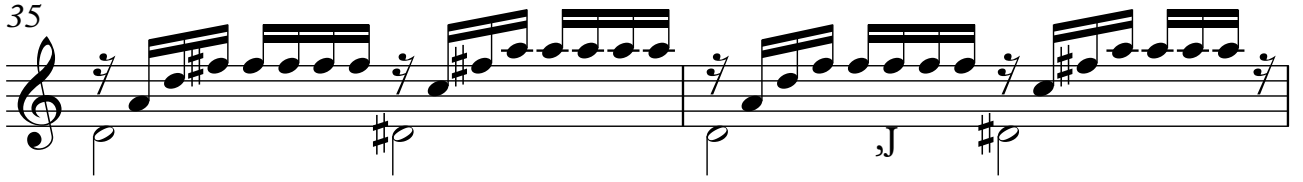
7

9

11

13

Musical score for guitar, measures 15 to 31. The score is written in treble clef with a 2/4 time signature. It features a complex rhythmic pattern of eighth notes and sixteenth notes, often beamed together. The bass line consists of quarter notes and half notes, with various accidentals (sharps, naturals, flats) and phrasing slurs. The key signature changes throughout the piece, including G major, D major, and B major. Measure 23 includes a fermata over a quarter note. Measure 25 includes a fermata over a half note. Measure 27 includes a fermata over a quarter note. Measure 29 includes a fermata over a quarter note. Measure 31 includes a fermata over a quarter note.



51

Measures 51-52: Treble clef, 4/4 time. Measure 51: Quarter rest, eighth-note triplet (G4, A4, B4), eighth-note triplet (B4, C5, D5), quarter rest. Measure 52: Quarter rest, eighth-note triplet (B4, A4, G4), eighth-note triplet (F4, E4, D4), quarter rest. Bass clef: Measure 51: Quarter note G3, half note G3. Measure 52: Quarter note B2, half note B2.

53

Measures 53-54: Treble clef, 4/4 time. Measure 53: Quarter rest, eighth-note triplet (G4, A4, B4), eighth-note triplet (B4, C5, D5), quarter rest. Measure 54: Quarter rest, eighth-note triplet (B4, A4, G4), eighth-note triplet (F4, E4, D4), quarter rest. Bass clef: Measure 53: Quarter note B2, half note B2. Measure 54: Quarter note D3, half note D3.

55

Measures 55-56: Treble clef, 4/4 time. Measure 55: Quarter rest, eighth-note triplet (G4, A4, B4), eighth-note triplet (B4, C5, D5), quarter rest. Measure 56: Quarter rest, eighth-note triplet (B4, A4, G4), eighth-note triplet (F4, E4, D4), quarter rest. Bass clef: Measure 55: Quarter note G3, half note G3. Measure 56: Quarter note B3, half note B3.

57

Measures 57-58: Treble clef, 4/4 time. Measure 57: Quarter rest, eighth-note triplet (G4, A4, B4), eighth-note triplet (B4, C5, D5), quarter rest. Measure 58: Quarter rest, eighth-note triplet (B4, A4, G4), eighth-note triplet (F4, E4, D4), quarter rest. Bass clef: Measure 57: Quarter note G3, half note G3. Measure 58: Quarter note B3, half note B3.

59

Measures 59-60: Treble clef, 4/4 time. Measure 59: Quarter rest, eighth-note triplet (G4, A4, B4), eighth-note triplet (B4, C5, D5), quarter rest. Measure 60: Quarter rest, eighth-note triplet (B4, A4, G4), eighth-note triplet (F4, E4, D4), quarter rest. Bass clef: Measure 59: Quarter note G3, half note G3. Measure 60: Quarter note B3, half note B3.

61

Measures 61-62: Treble clef, 4/4 time. Measure 61: Quarter rest, eighth-note triplet (G4, A4, B4), eighth-note triplet (B4, C5, D5), quarter rest. Measure 62: Quarter rest, eighth-note triplet (B4, A4, G4), eighth-note triplet (F4, E4, D4), quarter rest. Bass clef: Measure 61: Quarter note G3, half note G3. Measure 62: Quarter note B3, half note B3.

63

Measures 63-64: Treble clef, 4/4 time. Measure 63: Quarter rest, eighth-note triplet (G4, A4, B4), eighth-note triplet (B4, C5, D5), quarter rest. Measure 64: Quarter rest, eighth-note triplet (B4, A4, G4), eighth-note triplet (F4, E4, D4), quarter rest. Bass clef: Measure 63: Quarter note G3, half note G3. Measure 64: Quarter note B3, half note B3.

65

Measures 65-66: Treble clef, 4/4 time. Measure 65: Quarter rest, eighth-note triplet (G4, A4, B4), eighth-note triplet (B4, C5, D5), quarter rest. Measure 66: Quarter rest, eighth-note triplet (B4, A4, G4), eighth-note triplet (F4, E4, D4), quarter rest. Bass clef: Measure 65: Quarter note G3, half note G3. Measure 66: Quarter note B3, half note B3.