

# OPUS - 54

## LES VARIETES AMUSANTES

### NUMERO 2

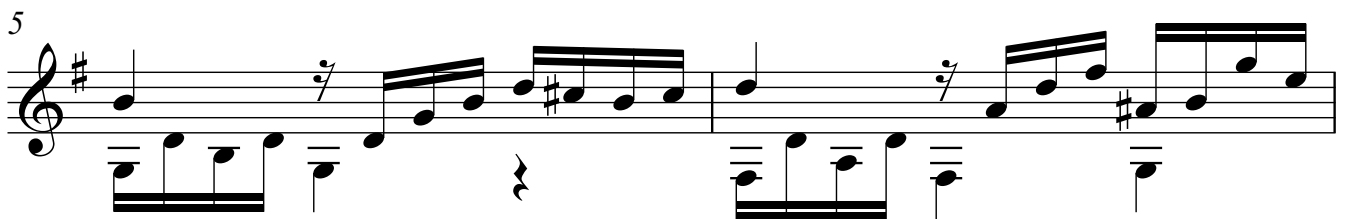
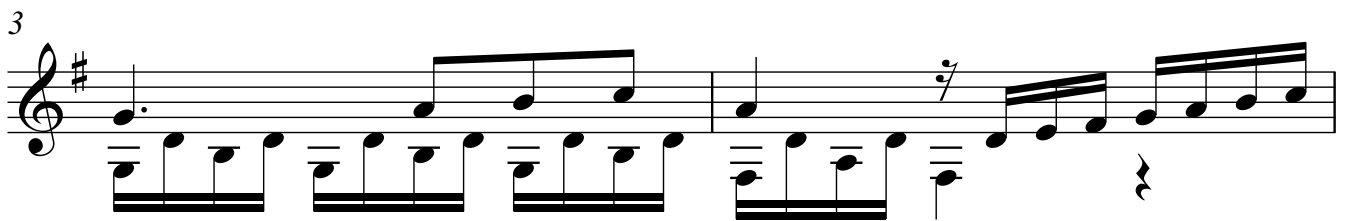
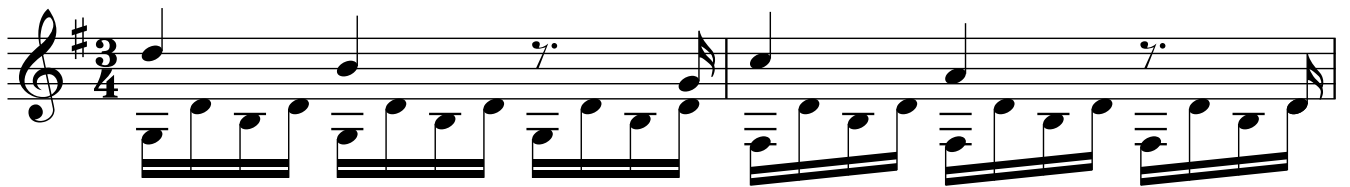
ARMONIZADO POR LUIS ALVAREZ

MAURO GIULIANI

(1781 - 1829)

ANDANTINO

$\text{♩} = 80$



7

Musical notation for measures 7 and 8. The key signature is one sharp (F#). Measure 7 begins with a treble clef and a common time signature. The melody consists of eighth and sixteenth notes, with a sharp sign above the second measure. The bass line features a simple accompaniment of quarter notes.

9

Musical notation for measures 9 and 10. The key signature is one sharp (F#). Measure 9 starts with a treble clef. The melody is composed of quarter notes, and the bass line continues with a steady eighth-note accompaniment.

11

Musical notation for measures 11 and 12. The key signature is one sharp (F#). Measure 11 begins with a treble clef. The melody includes a dotted quarter note and eighth notes, with a sharp sign above the second measure. The bass line maintains the eighth-note accompaniment.

13

Musical notation for measures 13 and 14. The key signature is one sharp (F#). Measure 13 starts with a treble clef. The melody features a dotted quarter note and eighth notes, with a sharp sign above the second measure. The bass line continues with the eighth-note accompaniment.

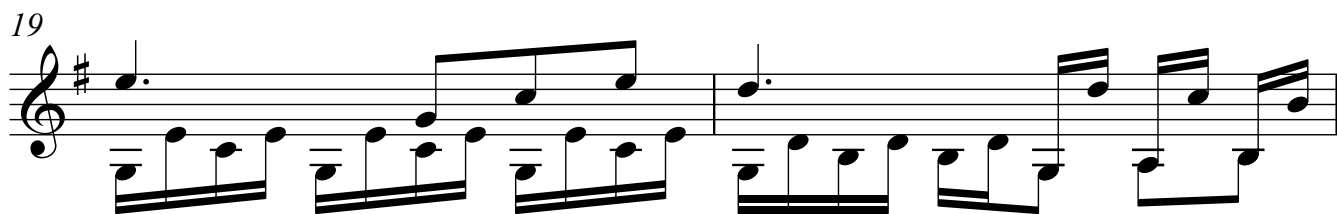
15

Musical notation for measures 15 and 16. The key signature is one sharp (F#). Measure 15 begins with a treble clef. The melody consists of quarter notes, and the bass line continues with the eighth-note accompaniment.

17

Musical notation for measures 17 and 18. The key signature is one sharp (F#). Measure 17 starts with a treble clef. The melody includes eighth and sixteenth notes, with a sharp sign above the second measure. The bass line continues with the eighth-note accompaniment.

19



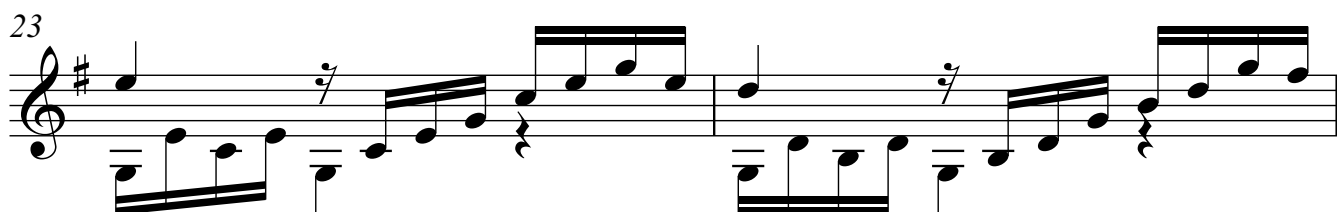
Musical notation for measures 19 and 20. The key signature is one sharp (F#). The melody in the treble clef consists of quarter notes and eighth notes. The bass line features a steady eighth-note accompaniment.

21



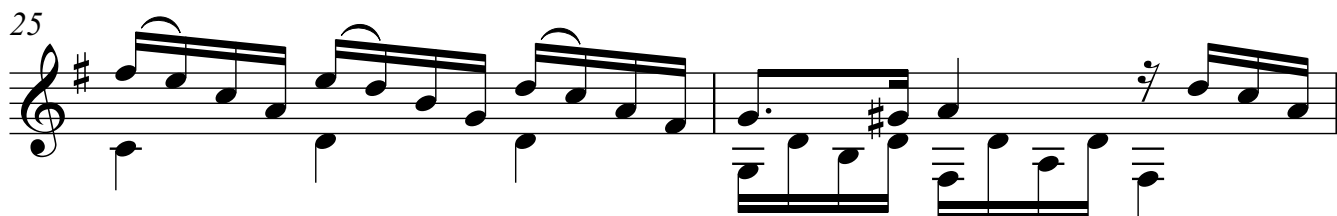
Musical notation for measures 21 and 22. Measure 21 contains a complex rhythmic pattern with slurs and ties. Measure 22 includes a fermata over a quarter note in the melody.

23



Musical notation for measures 23 and 24. Both measures feature a fermata over a quarter note in the melody, with eighth-note accompaniment in the bass.

25



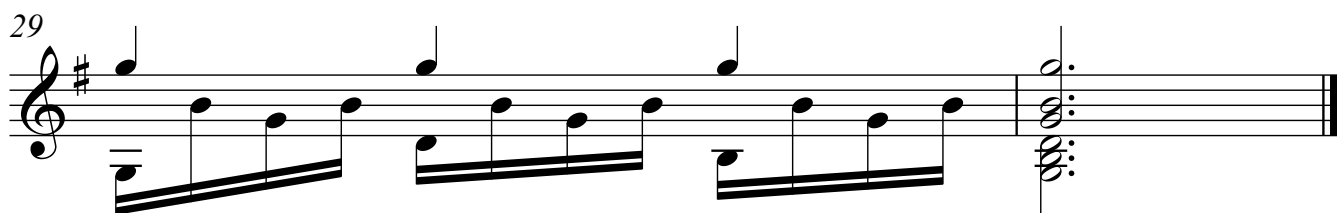
Musical notation for measures 25 and 26. Measure 25 has a melodic line with slurs and ties. Measure 26 features a fermata over a quarter note in the melody.

27



Musical notation for measures 27 and 28. Measure 27 includes a fermata over a quarter note in the melody. Measure 28 continues the eighth-note accompaniment.

29



Musical notation for measures 29 and 30. Measure 29 continues the eighth-note accompaniment. Measure 30 concludes with a double bar line and repeat dots.