

OP - 51

18 ESTUDIOS

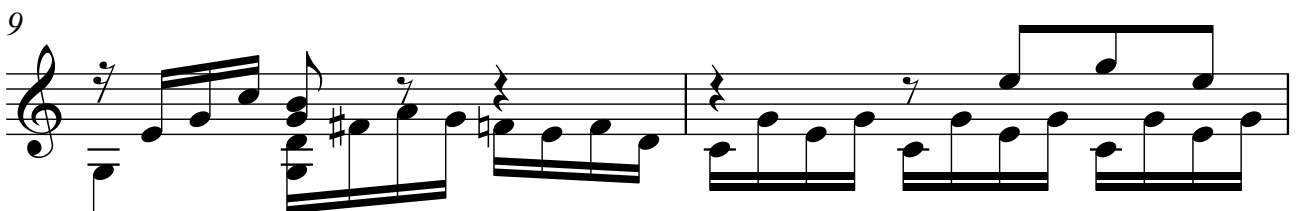
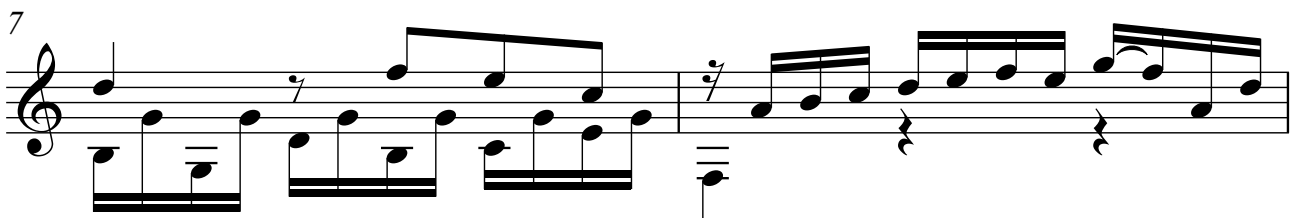
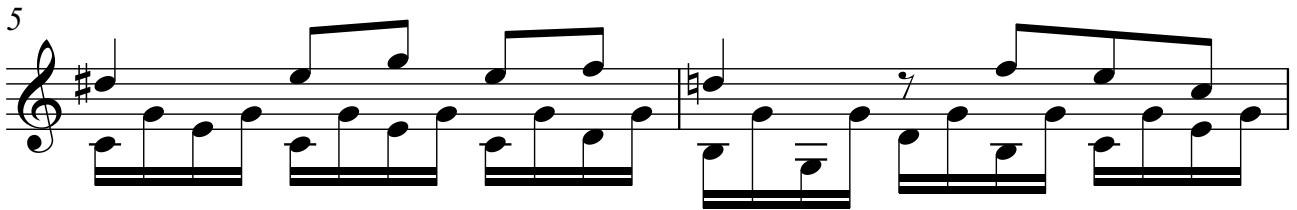
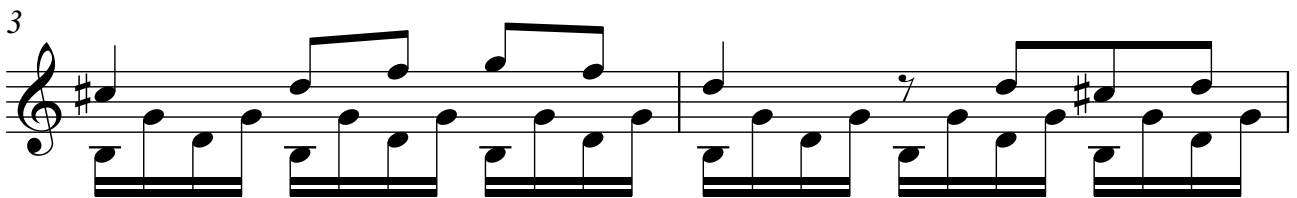
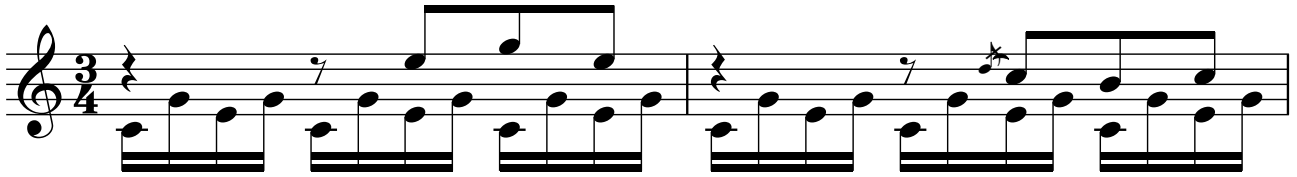
Estudio nº16

ARMONIZADO POR LUIS ALVAREZ

MAURO GIULIANI

Alegreto

♩=100



11

Musical notation for measures 11 and 12. Measure 11 starts with a treble clef, a key signature of one sharp (F#), and a 7/8 time signature. It features a melody of eighth notes and a bass line of eighth notes. Measure 12 continues the melody and bass line, with a key signature change to two sharps (F# and C#).

13

Musical notation for measures 13 and 14. Measure 13 continues the melody and bass line from measure 12. Measure 14 continues the melody and bass line, maintaining the two-sharp key signature.

15

Musical notation for measures 15 and 16. Measure 15 starts with a treble clef, a key signature of two sharps (F# and C#), and a 7/8 time signature. It features a melody of eighth notes and a bass line of eighth notes. Measure 16 continues the melody and bass line.

17

Musical notation for measures 17 and 18. Measure 17 continues the melody and bass line. Measure 18 introduces triplet eighth notes in the melody, with a '3' above the group.

19

Musical notation for measures 19 and 20. Measure 19 continues the melody and bass line. Measure 20 continues the melody and bass line, with triplet eighth notes in the melody.

20

Musical notation for measures 21 and 22. Measure 21 continues the melody and bass line. Measure 22 continues the melody and bass line, with triplet eighth notes in the melody.

21

Musical notation for measures 23 and 24. Measure 23 continues the melody and bass line. Measure 24 continues the melody and bass line, with triplet eighth notes in the melody.

