

OPUS - 48

24 ESTUDIOS

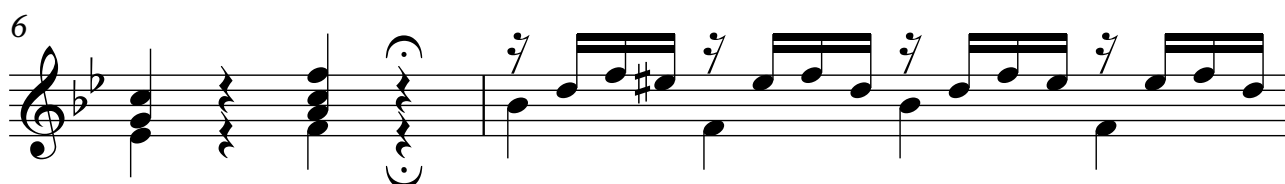
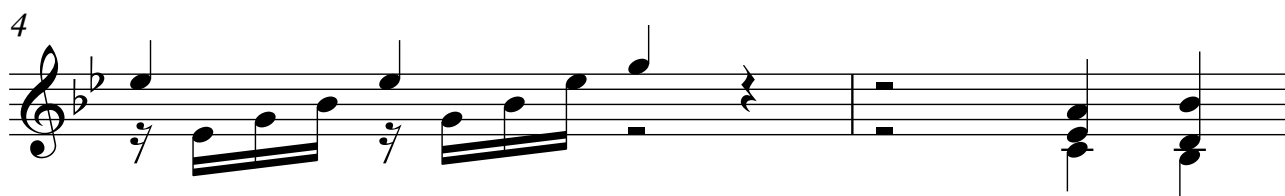
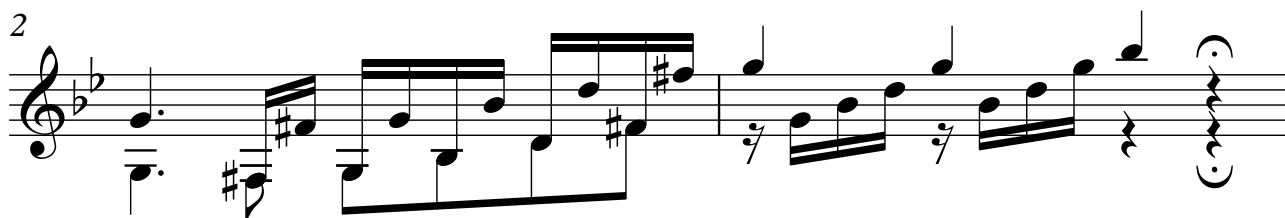
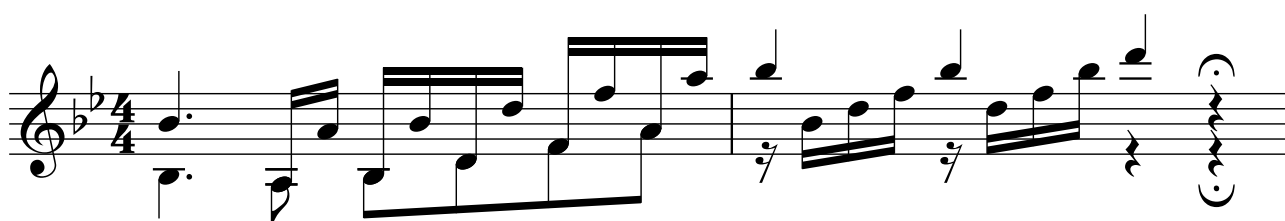
ESTUDIO - N°10

TRANSCRIPCIÓN: LUIS ALVAREZ

MAURO GIULIANI
(1781-1829)

VIVACE CON BRIO

$\text{♩} = 140$



2

8

Musical notation for measures 8 and 9. The piece is in 2/2 time and B-flat major. Measure 8 features a treble clef, a key signature of two flats, and a series of eighth-note chords with a rhythmic slash above each. The bass line consists of quarter notes: B-flat, G, F, E, D, C, B-flat, A. Measure 9 continues the eighth-note chords in the treble and the bass line with quarter notes: G, F, E, D, C, B-flat, A, G.

10

Musical notation for measures 10 and 11. Measure 10 continues the eighth-note chords in the treble and the bass line with quarter notes: G, F, E, D, C, B-flat, A, G. Measure 11 features the eighth-note chords in the treble and a bass line with quarter notes: G, F, E, D, C, B-flat, A, G.

12

Musical notation for measures 12 and 13. Measure 12 continues the eighth-note chords in the treble and the bass line with quarter notes: G, F, E, D, C, B-flat, A, G. Measure 13 features the eighth-note chords in the treble and a bass line with quarter notes: G, F, E, D, C, B-flat, A, G.

14

Musical notation for measures 14 and 15. Measure 14 continues the eighth-note chords in the treble and the bass line with quarter notes: G, F, E, D, C, B-flat, A, G. Measure 15 features the eighth-note chords in the treble and a bass line with quarter notes: G, F, E, D, C, B-flat, A, G.

16

Musical notation for measures 16 and 17. Measure 16 continues the eighth-note chords in the treble and the bass line with quarter notes: G, F, E, D, C, B-flat, A, G. Measure 17 features the eighth-note chords in the treble and a bass line with quarter notes: G, F, E, D, C, B-flat, A, G.

18

Musical notation for measures 18 and 19. Measure 18 continues the eighth-note chords in the treble and the bass line with quarter notes: G, F, E, D, C, B-flat, A, G. Measure 19 features the eighth-note chords in the treble and a bass line with quarter notes: G, F, E, D, C, B-flat, A, G.

20

Musical notation for measures 20 and 21. Measure 20 continues the eighth-note chords in the treble and the bass line with quarter notes: G, F, E, D, C, B-flat, A, G. Measure 21 features the eighth-note chords in the treble and a bass line with quarter notes: G, F, E, D, C, B-flat, A, G.