

OPUS - 47

VARIACIONES AUSTRIACAS

TRANSCRIPCIÓN: LUIS ALVAREZ

MAURO GIULIANI
(1781 - 1829)

TEMA

♩=160

First line of musical notation (measures 1-4) in treble clef, key of A major (three sharps), and 3/4 time. The melody consists of quarter notes: A4, B4, C5, B4, A4. The bass line consists of half notes: A3, B3, C4, B3, A3. A repeat sign is at the beginning.

Second line of musical notation (measures 5-8) in treble clef, key of A major, and 3/4 time. The melody continues with quarter notes: G4, F#4, E4, D4, C4. The bass line continues with half notes: G3, F#3, E3, D3, C3. A repeat sign is at the end.

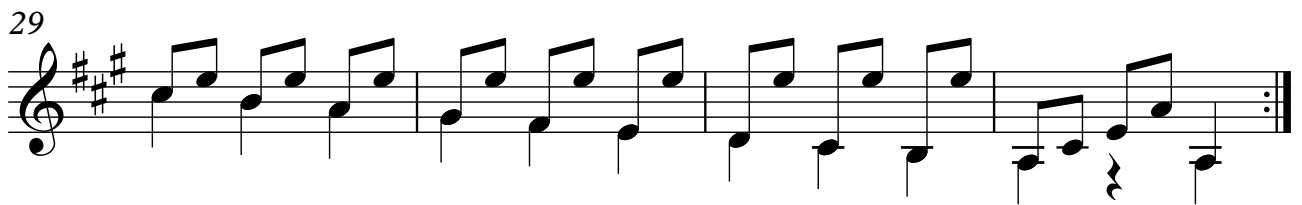
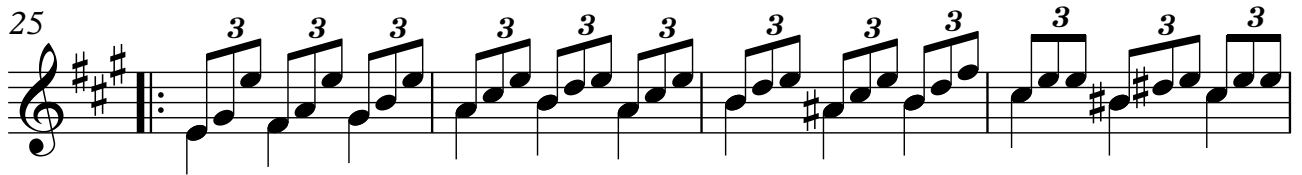
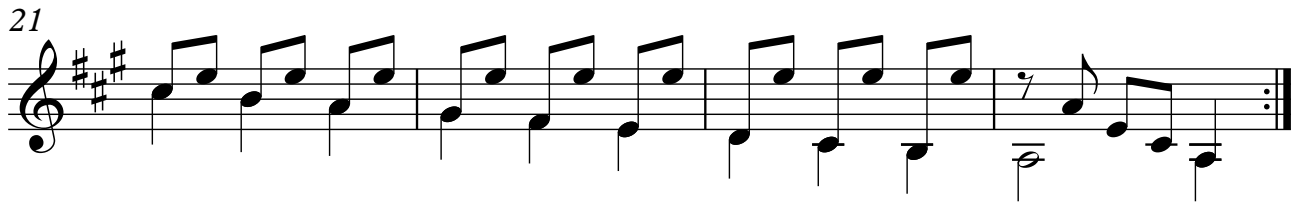
Third line of musical notation (measures 9-12) in treble clef, key of A major, and 3/4 time. The melody consists of quarter notes: B4, A4, G4, F#4, E4, D4, C4. The bass line consists of half notes: B3, A3, G3, F#3, E3, D3, C3. A repeat sign is at the beginning.

Fourth line of musical notation (measures 13-16) in treble clef, key of A major, and 3/4 time. The melody consists of quarter notes: B4, A4, G4, F#4, E4, D4, C4. The bass line consists of half notes: B3, A3, G3, F#3, E3, D3, C3. A repeat sign is at the end.

VARIACIÓN 1

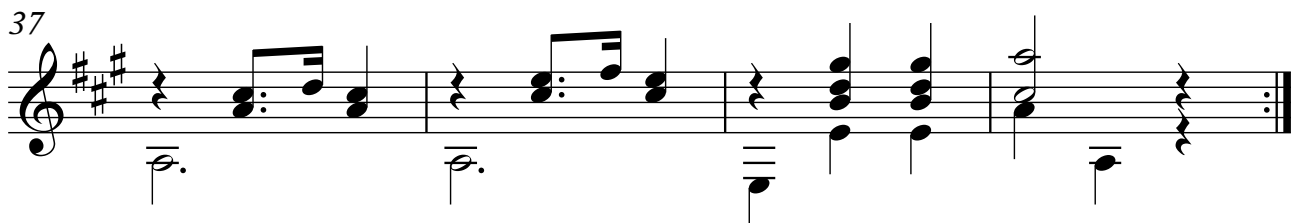
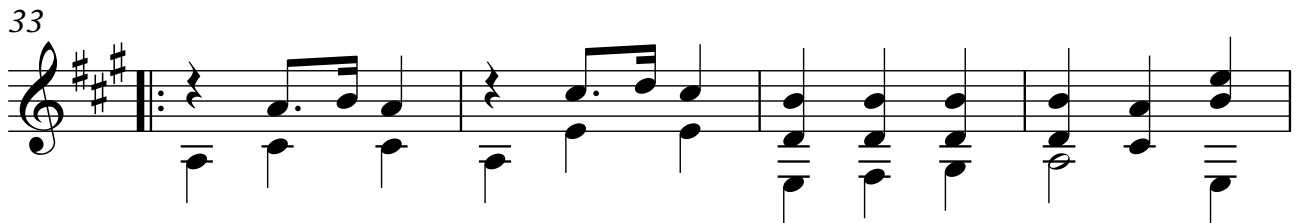
♩=160

First line of musical notation for Variation 1 (measures 17-20) in treble clef, key of A major, and 3/4 time. The melody consists of eighth notes: A4, B4, C5, B4, A4, G4, F#4, E4, D4, C4, B4, A4, G4, F#4, E4, D4, C4. The bass line consists of eighth notes: A3, B3, C4, B3, A3, G3, F#3, E3, D3, C3, B2, A2, G2, F#2, E2, D2, C2. A repeat sign is at the beginning.



VARIACIÓN 2

$\text{♩} = 106$



45

VARIACIÓN 3

$\text{♩} = 132$

49

53

57

61

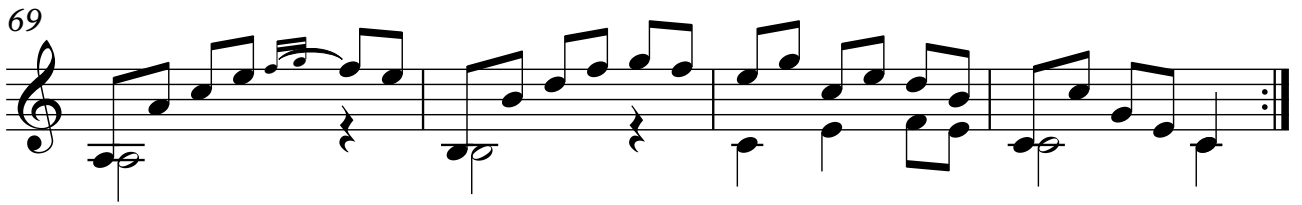
VARIACIÓN 4

$\text{♩} = 112$

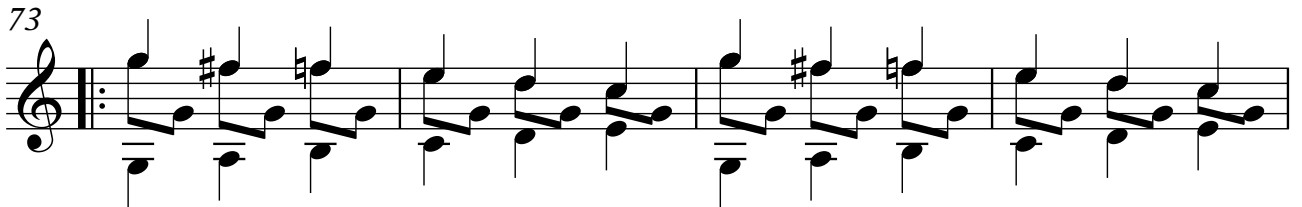
65

4

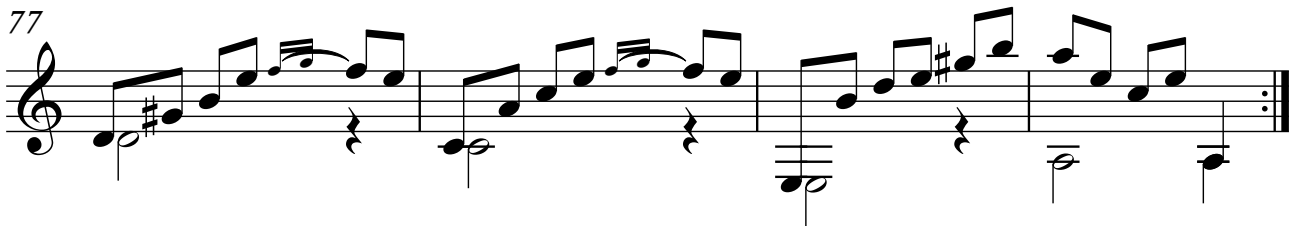
69



73



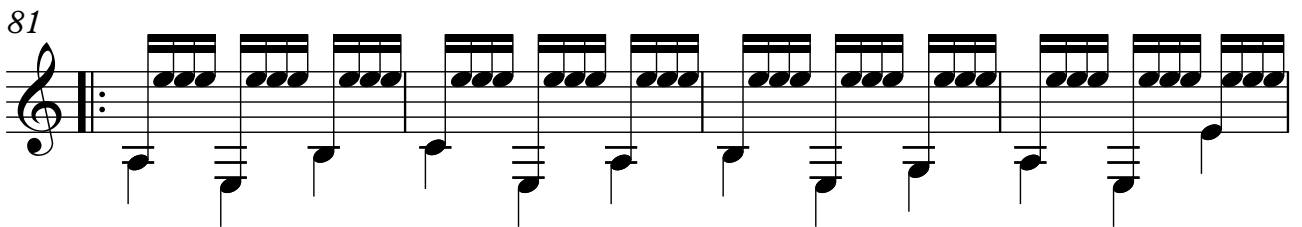
77



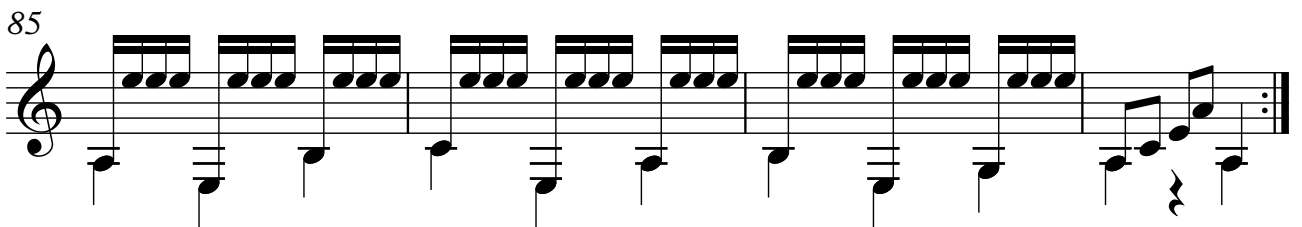
VARIACIÓN 5

$\text{♩} = 112$

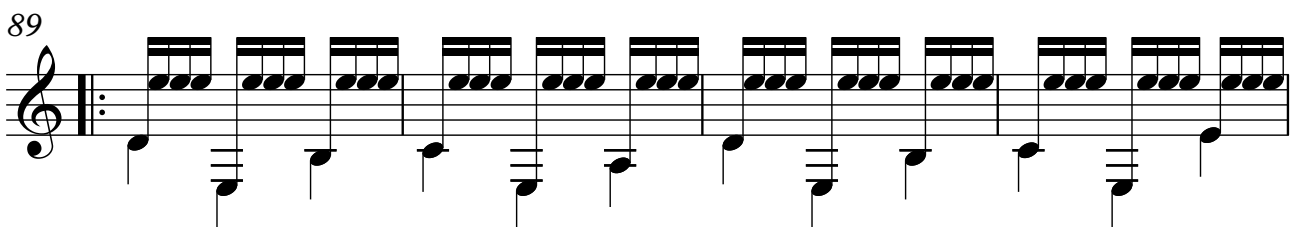
81



85



89



93

