

OPUS - 41

NIAISERIE DE ENFANT

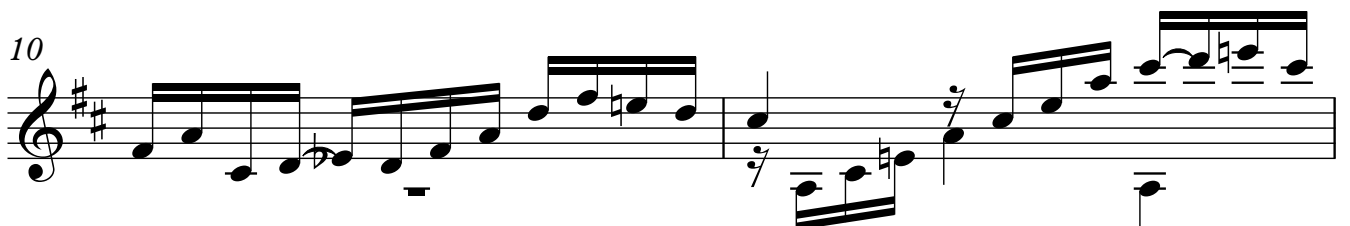
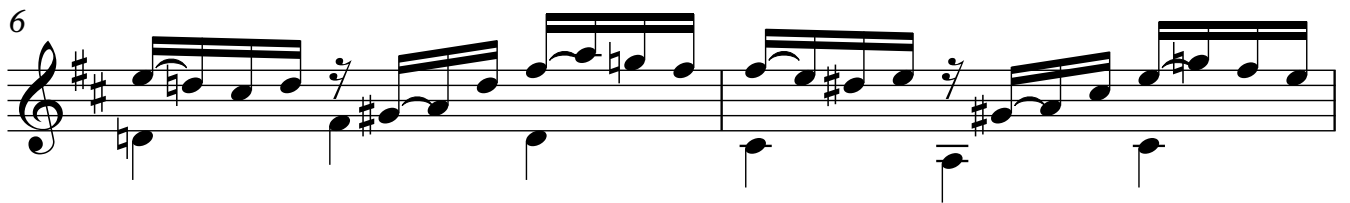
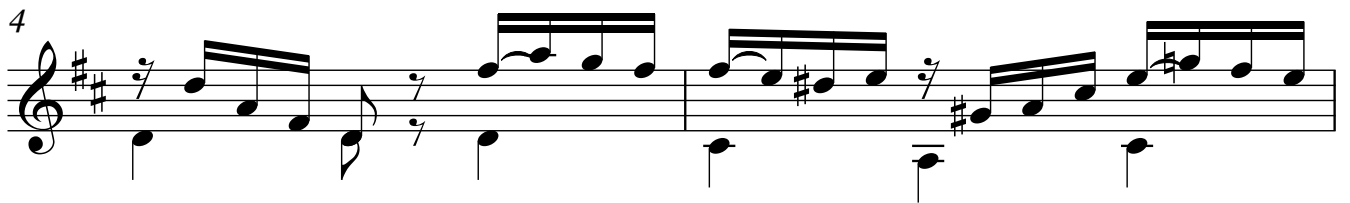
ARMONIZADO POR LUIS ALVAREZ

MAURO GIULIANI
(1781-1829)

TEMA

♩=80

Andantino Gracioso



12

Musical notation for measures 12 and 13. The key signature is two sharps (F# and C#). Measure 12 features a treble clef with a series of eighth-note chords and a bass line with quarter notes. Measure 13 continues with similar rhythmic patterns and includes a fermata over the final note.

14

Musical notation for measures 14 and 15. Measure 14 shows a treble clef with eighth-note chords and a bass line. Measure 15 continues the melodic and harmonic development with a fermata at the end.

16

Musical notation for measures 16 and 17. Measure 16 features a treble clef with eighth-note chords and a bass line. Measure 17 continues with similar rhythmic patterns and includes a fermata over the final note.

18

Musical notation for measures 18 and 19. Measure 18 shows a treble clef with eighth-note chords and a bass line. Measure 19 continues the melodic and harmonic development with a fermata at the end.

20

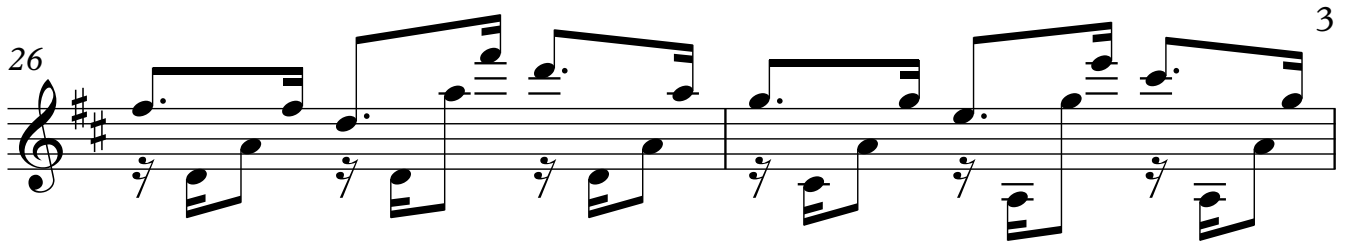
Musical notation for measures 20 and 21. Measure 20 features a treble clef with eighth-note chords and a bass line. Measure 21 continues with similar rhythmic patterns and includes a fermata over the final note.

22

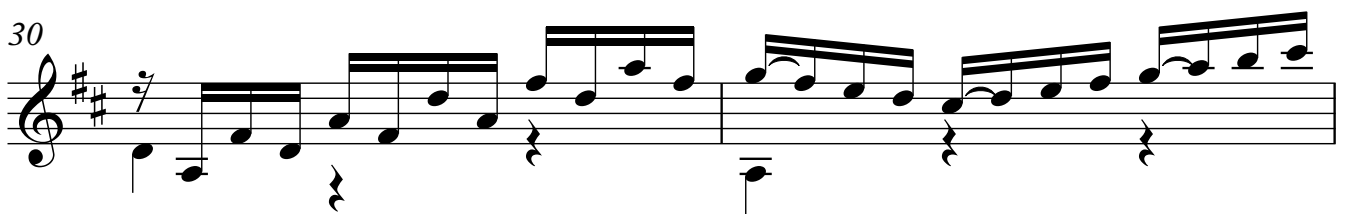
Musical notation for measures 22 and 23. Measure 22 shows a treble clef with eighth-note chords and a bass line. Measure 23 continues the melodic and harmonic development with a fermata at the end.

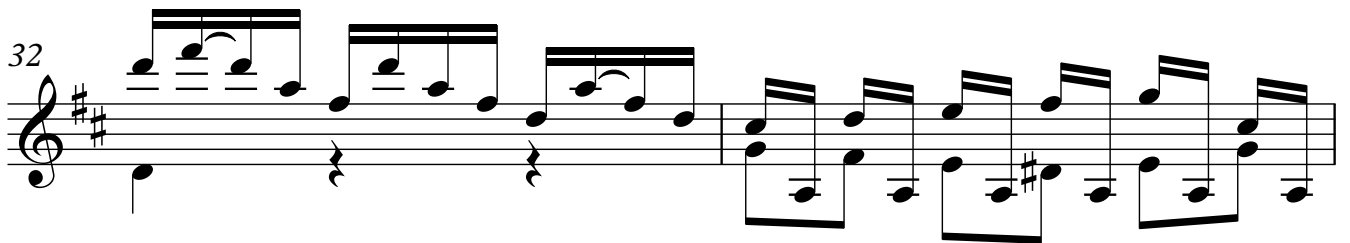
24

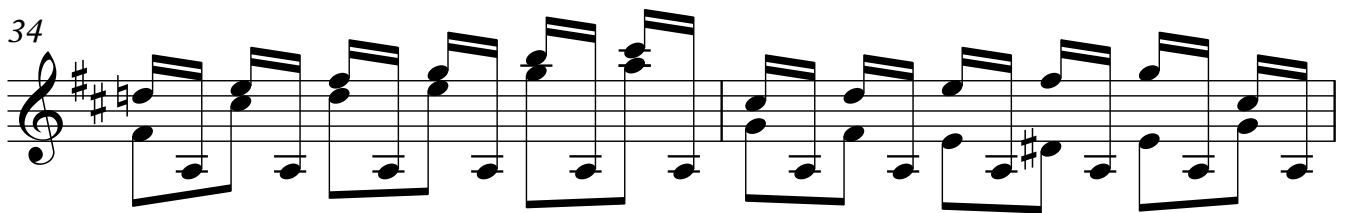
Musical notation for measures 24 and 25. Measure 24 features a treble clef with eighth-note chords and a bass line. Measure 25 continues with similar rhythmic patterns and includes a fermata over the final note.

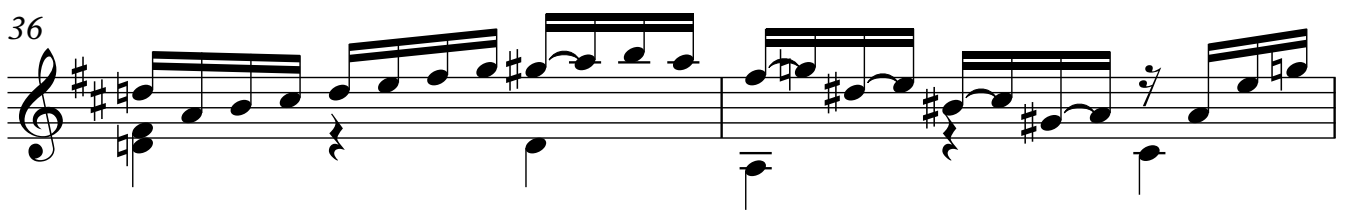
26 

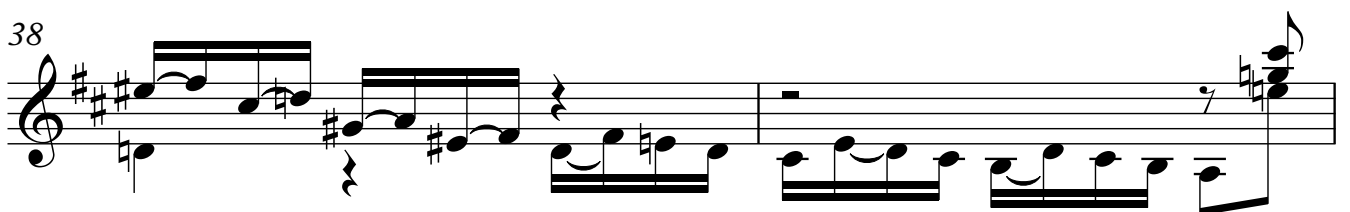
28 

30 

32 

34 

36 

38 

40

42

44

46

47

48

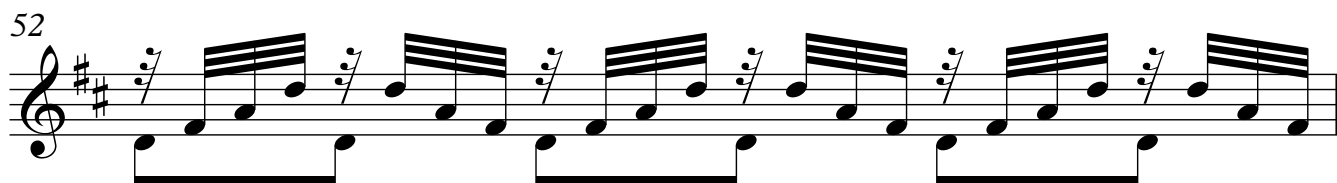
50

51



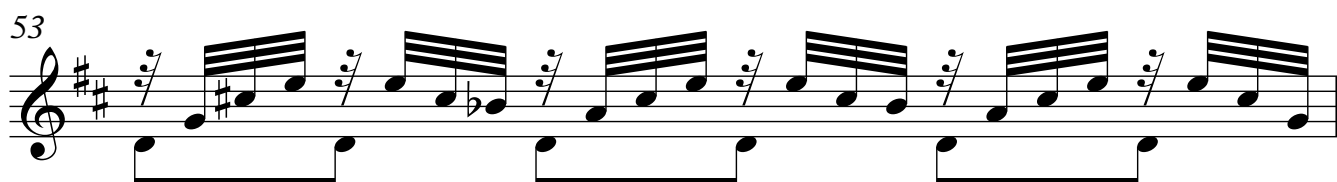
Musical notation for measure 51, featuring a treble clef, a key signature of two sharps (F# and C#), and a 7/8 time signature. The melody consists of eighth notes with beams, and the bass line consists of quarter notes.

52



Musical notation for measure 52, featuring a treble clef, a key signature of two sharps (F# and C#), and a 7/8 time signature. The melody consists of eighth notes with beams, and the bass line consists of quarter notes.

53



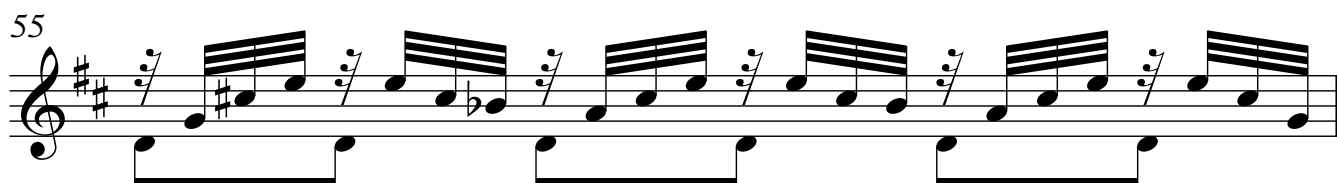
Musical notation for measure 53, featuring a treble clef, a key signature of two sharps (F# and C#), and a 7/8 time signature. The melody consists of eighth notes with beams, and the bass line consists of quarter notes.

54




Musical notation for measure 54, featuring a treble clef, a key signature of two sharps (F# and C#), and a 7/8 time signature. The melody consists of eighth notes with beams, and the bass line consists of quarter notes.

55



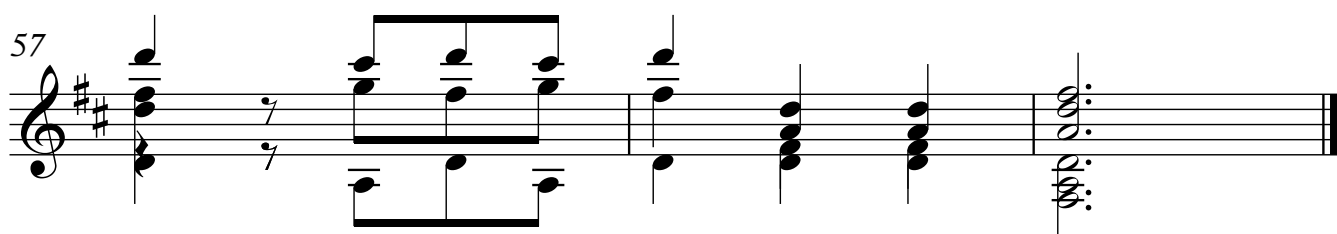
Musical notation for measure 55, featuring a treble clef, a key signature of two sharps (F# and C#), and a 7/8 time signature. The melody consists of eighth notes with beams, and the bass line consists of quarter notes.

56



Musical notation for measure 56, featuring a treble clef, a key signature of two sharps (F# and C#), and a 7/8 time signature. The melody consists of eighth notes with beams, and the bass line consists of quarter notes.

57



Musical notation for measure 57, featuring a treble clef, a key signature of two sharps (F# and C#), and a 7/8 time signature. The melody consists of eighth notes with beams, and the bass line consists of quarter notes. The measure concludes with a double bar line.