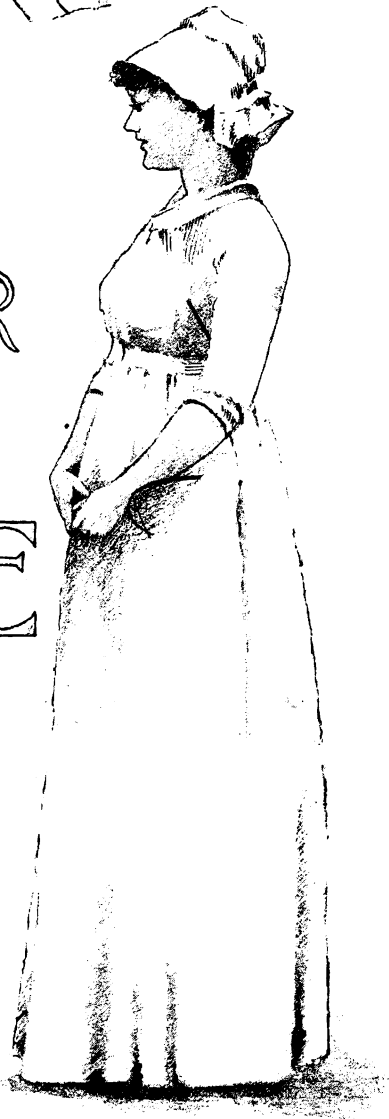


AN IRISH FOLK-SONG

POEM
BY
GILBERT PARKER
SET TO MUSIC
BY
ARTHUR FOOTE



Sop. or Ten. in G min.	Net. .50
Mezzo-Sop. or Bar. in F min.	.50
Alto or Bass in E min.	.50
With Violin Ob. Sop. or Ten. in G min.	.60
With Violin Ob. Mezzo Sop. or Bar.	.60
With Violin Ob. Alto or Bass in E min.	.60
With Violin and Violoncello in E min.	.60
Pianoforte Solo	.50

ARTHUR P. SCHMIDT
Boston: Leipzig. New York:

London: Boosey & Co.



AN IRISH FOLK-SONG

You'll wander far and wide, dear, but you'll come back again,
You'll come back to your father and your mother in the glen,
Although we may be lyin' 'neath the heather grasses then —
You'll be comin' back, my darlin'!

You'll hear the wild birds singin' beneath a brighter sky;
The roof-tree of your house, dear, it will be broad and high;
But you'll hunger for the hearth-stone, where, a child, you used to lie
You'll be comin' back, my darlin'!

GILBERT PARKER

To Miss Lilian Carllsmith.

AN IRISH FOLK-SONG.

The poem is from
"Pierre and his people" by
GILBERT PARKER.
(by permission.)



ARTHUR FOOTE.

Moderato espressivo. ♩ = 96.

VOICE.

PIANO.

Musical score for voice and piano. The score is in G major and 4/4 time. It consists of five systems of music. The first system shows the vocal line and piano accompaniment. The second system continues the piano accompaniment with dynamics like *mf*, *pp*, and *p*. The third system includes the vocal line with the lyrics: "You'll wan - der far and wide, dear, but you'll come back a -". The fourth system continues the piano accompaniment. The fifth system includes the vocal line with the lyrics: "gain; You'll come back to your fa - ther and your mo - ther in the". The score includes various musical notations such as slurs, ties, and dynamic markings.

p *pp*

glen, Al - though we may be ly - in' 'neath the heath - er gras - ses

p *pp*

Ped. *

ppp *rit.* *a tempo* *p*

then - You'll be com - in' back, my dar - lin'! Ah!

ppp *rit.* *a tempo* *pp*

Ped. * Ped. * Ped. * Ped. *

f *dim.*

f *dim.*

Ped. * Ped. * Ped. * Ped. * Ped. * Ped. * Ped. * Ped. * Ped. *

p *dim.*

p *dim.*

Ped. * Ped. * Ped. *

You'll hear the wild birds sing-ing — be - neath a bright - er

p

ped. * *ped.* * *ped.* * *ped.* *

sky; The roof - tree of your house, dear, it

cresc. *f*

ped. * *cresc.* *f* * *ped.* *

will be broad and high; But you'll hun - ger for the

p *espress.*

ped. * *ped.* * *p*

hearth - stone, where, a child, you used to lie - You'll be

pp *ppp*

pp *ppp*

ped. * *ped.* *

com - in' back, my dar - lin'!

pp *sotto voce* Ah!

pp una corda

Ped. * Ped. * Ped. *

Ped. * Ped. * Ped. * Ped. * Ped. * Ped. * Ped. * Ped. * Ped. * Ped. *

Ped. * Ped. * Ped. * Ped. * Ped. *

dim.

pp

You'll be com - in' back, my dar - lin'!

pp

Ped. *

LATEST SONG ISSUES

	Net
ROY E. AGNEW, Hie Away, Hie Away! (2 keys)	.50
June Twilight (2 keys)	.50
SYDNEY BAYNES, A Tumble-Down Place (3 keys)	.50
ROBERT BRANNE, Dawn Awakes! (3 keys)	.50
RALPH COX, Laughter Has Come (2 keys)	.50
ALMA GOATLEY, What I Don't Like (2 keys)	.50
Raining	.50
G. A. GRANT-SCHAEFER, Night Wind's Message	
(Chippewa Love Song) (2 keys)	.50
E. STANFORD HAIGH, Call to My Heart (3 keys)	.50
CUTHBERT HARRIS, Blackbird, Keep Singing (2 keys)	.60
FREDERICK HUMPHRIES, Off to Market, Johnny! (3 keys)	.50
JOHN W. METCALF, Love's Golden Hour (3 keys)	.50
H. V. MILLIGAN, Willow in Your April Gown (2 keys)	.50
ERNEST NEWTON, The Song Birds (3 keys)	.50
MARX E. OBERNDORFER, Radiant Night (2 keys)	.50
ANNA PRISCILLA RISHER, Her Voice (2 keys)	.50
R. HUNTINGTON WOODMAN, April's Door (2 keys)	.50
A Contrast (2 keys)	.50

SACRED SONGS

G. A. GRANT-SCHAEFER, He Feedeth the Flocks (2 keys)	.50
The Lord is Thy Keeper (2 keys)	.50
J. LAMONT GALBRAITH, The Heart of God (Violin Ob.) (2 keys)	.60
E. S. HOSMER, Leaning on Thee (3 keys)	.50
LUCINA JEWELL, The Vision of the Shepherds (Christmas) (2 keys)	.50
ANNA PRISCILLA RISHER, I Give Myself to Thee (2 keys)	.50
J. E. ROBERTS, Come Ye to the Waters (2 keys)	.50
God Is a Spirit (3 keys)	.50
ARTHUR W. THAYER, O Lord, Our Lord (2 keys)	.50
ALFRED WOOLER, Hear Me When I Call (3 keys)	.50
I Heard the Voice of Jesus Say (3 keys)	.50

SACRED DUETS

F. LESLIE CALVER, Thou Hidden Love (Sop. and Ten.)	.60
Divine Grace (Sop. and Ten.; Alto and Bar.)	.60
J. LAMONT GALBRAITH, God's Will Is Best (Sop. and Ten.)	.50
WALTER HOWE JONES, And I Saw a New Heaven (Sop. and Alto)	.50
ANNA PRISCILLA RISHER, Nearer, My God, to Thee (Sop. and Alto)	.50
CHARLES P. SCOTT, Peace Be Unto You (Alto and Ten.)	.60
R. W. VORIS, Lead Us, O Father (Alto and Ten.)	50