

COMPOSITIONS AND ARRANGEMENTS

for

GUITAR

by

WILLIAM FODEN

MY OLD KENTUCKY HOME (Varied)	\$1.25
DON'T FORGET TO WRITE ME, DARLING (Varied)	1.25
MINUET IN F (Le Premier)75
BARCAROLLE (Bounding Billows)75
MASSA'S IN THE COLD, COLD GROUND (Varied)	1.00
LISTEN TO THE MOCKING BIRD (Varied)	1.00
CAPITOL MARCH75
OLD BLACK JOE (Varied)	1.50
GRAND FANTASIE OF AMERICAN SONGS	1.50
ANNIE LAURIE (Varied)	1.25
MARITANA (Grand Selections)	1.25
LAST ROSE OF SUMMER (Varied)	1.25
BELIEVE ME IF ALL THOSE ENDEARING YOUNG CHARMS	1.00

Published by

Wm J. SMITH & CO.

New York, N. Y.



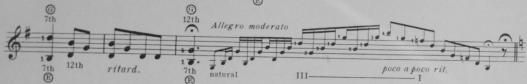
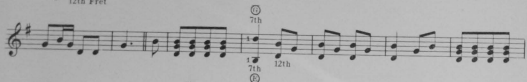
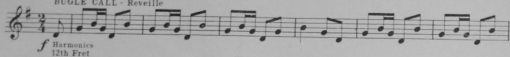
Grand Fantasie of American Songs

GUITAR SOLO

Compiled and Arranged by
WILLIAM FODEN

Allegro

BUGLE CALL - Reveille



Andante

JUST BEFORE THE BATTLE MOTHER



mf V VIII V I III *dim.* II I *pp* *Lento*

p a tempo *f* V X *poco a poco rit.* III I *vib.*

f II V *poco rit.* VII I *lento P dim. p*

Allegretto**KINGDOM COMIN'**

p II *f* VII VI V *p* II II

VII VI V *f* II *p* II VII VI V *f* V

p II II VII VI V II V

f II V II *p*

VII VI V *f* II *mf* II VII V ** Banjo Imitation*

* Strike near the bridge.

II I II VII II
 II I II VII II
f *p* *mf* II VII
Allegro *poco rit.* Harmonics
 II 12 7 8
 A D D
ad lib.
Andante
 BONNIE ELOISE
p II III V IV V VII V II *f* V II I
con espressione
 II *p* V IV V VII IX VI V I *vib.* II
dim. *p* *pp* *f* I VII
 V II III
vib. *vib.* *dim.* *p* III
f Har. 12 VII X V II *ff* *rall.* *ff* *dim.* Tremolo 1st finger *ff* *p*
 I V VI V II

Allegretto
SUSANNA

mf V II I II V

II *mf* V II I

II V VII II *f* *p* *ff* I VII

V II I II *mf* V II

Ala Clog

mf II V II I

f II *mf* V II

mf II V

f II *mf* III III

V VII II

f 1
 IV VII
 V
 II
mf
 V II
ff 1

Allegretto
WHIP-POOR-WILL'S SONG

p
 V III I
 V III I
 V II I
 V III I
 V VIII VII V I
 V III VII V
 V II I

f VIII *p* I *f* V *p* V

III I VII V I III I

Allegro moderato

poco rit. IV V

IX *lento dim.*

Adagio
 WRITE ME A LETTER FROM HOME

vib. *vib.*

p con espressione IV II *pp* V II I

VII V II VII V II IV II *pp*

II V VII II *pp* VII

II IV V IX

tremolo ad lib. *a tempo*

rit. VII *a tempo* II *pp*

Musical score for the first system of "Moderato Nancy Till". The music is in G major and 2/4 time. It features a piano accompaniment with chords and a vocal line. Dynamics include *pp*, *cresc.*, *p*, and *rit.*. The system concludes with a fermata and the Roman numeral VII.

Moderato
NANCY TILL

Musical score for the second system of "Moderato Nancy Till". The tempo is marked *Moderato* and the dynamics include *pp*, *f*, *Moderato poco rit. dim.*, and *long fz*. The system concludes with a fermata and the Roman numeral I.

Andante

MARYLAND, MY MARYLAND

Musical score for "MARYLAND, MY MARYLAND" in G major, 3/4 time, Andante. The score consists of three staves of music. The first staff begins with a piano (*p*) dynamic and includes chords III, V, VII, and VIII. It features a crescendo (*cresc.*) leading to a forte (*f*) section with chords VIII, VII, VIII, and II, followed by a decrescendo (*dim.*) and a *vib.* (vibrato) section with chords V and III. The second staff continues with piano (*p*) dynamics and includes chords V, VII, VIII, VII, VIII, II, V, III, and X. It also features a crescendo (*cresc.*) and a decrescendo (*dim.*) section. The third staff concludes with piano (*p*) dynamics and includes chords VII, V, VII, and VII, with a decrescendo (*dim.*) and a crescendo (*cresc.*) section.

Moderato

Musical score for "COLUMBIA THE GEM OF THE OCEAN" in G major, 3/4 time, Moderato. The score consists of two staves of music. The first staff begins with a decrescendo (*dim.*) and a forte (*f*) section with chords VIII, VII, VIII, and II, followed by a decrescendo (*dim.*) and a piano (*p*) section with chords V and III. The second staff continues with a decrescendo (*dim.*) and a piano (*p*) section with chord II.

Tempo di Marcia

COLUMBIA THE GEM OF THE OCEAN

Musical score for "COLUMBIA THE GEM OF THE OCEAN" in G major, 3/4 time, Tempo di Marcia. The score consists of four staves of music. The first staff begins with a mezzo-forte (*mf*) section with chord II, followed by a forte (*f*) section with chords V, I, II, I, and a decrescendo (*dim.*) leading to a piano (*p*) section with chord II. The second staff continues with a forte (*f*) section with chords I, II, I, and a mezzo-forte (*mf*) section with chord II. The third staff continues with a forte (*f*) section with chords I, II, III, II, and a piano (*p*) section with chord II. The fourth staff concludes with a forte (*f*) section with chords V, I, II, III, II, and a forte (*f*) section with chord II.

First musical staff with chords and dynamics: *p*, *f*, *p*, *mf*

Second musical staff with chords and dynamics: *f*, V, I II, III II

Allegro
DIXIE

Third musical staff with chords and dynamics: *p*, II, IV, VI, II

Fourth musical staff with first and second endings, dynamics: *f*, VII V

Fifth musical staff with chords and dynamics: V, II, VII V, IV V, I

Sixth musical staff with chords and dynamics: II, I, II, *v, f*, VII V, II, I

Presto

Seventh musical staff with *tremolo ad lib.* marking, dynamics: *rall.*, VII, V, *ff*, *ff*, IX, II

Eighth musical staff with dynamics: *ff*, IX, *ff*, II