

# OPUS - 7

## EL TALISMAN

ARMONIZADO POR LUIS ALVAREZ

JOSE FERRER

### INTRODUCCIÓN

♩ = 90

Musical notation for the first system of the introduction, measures 1-3. The music is in 4/4 time with a key signature of three sharps (F#, C#, G#). The melody is in the treble clef, and the bass line is in the bass clef. The first measure contains a half note chord (F#4, C#5, G#5) and a quarter note (F#4). The second measure contains a half note chord (F#4, C#5, G#5) and a quarter note (F#4). The third measure contains a half note chord (F#4, C#5, G#5) and a quarter note (F#4). A bracket labeled 'Arm' spans the last two measures.

Musical notation for the second system of the introduction, measures 4-6. The melody continues with eighth notes and quarter notes. The bass line consists of quarter notes and half notes.

Musical notation for the third system of the introduction, measures 7-9. The melody continues with eighth notes and quarter notes. The bass line consists of quarter notes and half notes.

Musical notation for the fourth system of the introduction, measures 10-12. The melody continues with eighth notes and quarter notes. The bass line consists of quarter notes and half notes.

Musical notation for the fifth system of the introduction, measures 13-15. The melody continues with eighth notes and quarter notes. The bass line consists of quarter notes and half notes.

16

19

21

23

25

28

30

Arm

# VALS

♩ = 90

33

38

43

48

53

58

63

68

73

78

83

88

93

98

103

tr

108

113

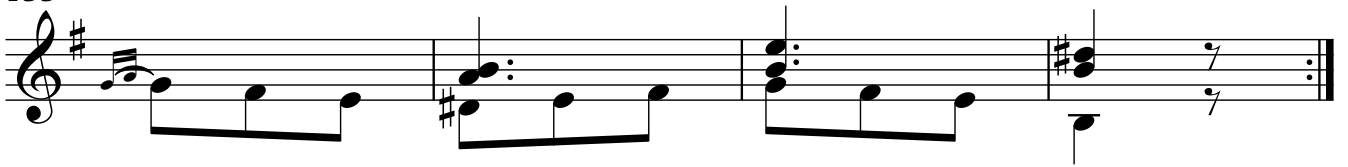
117

121

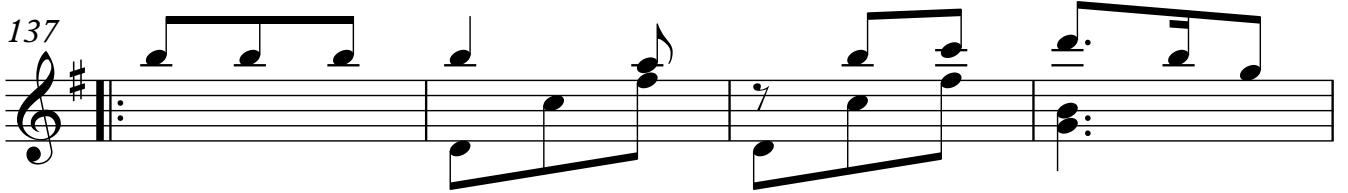
125

129

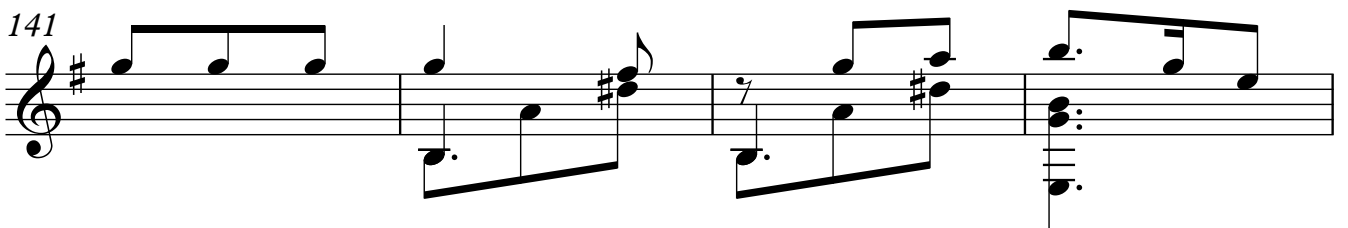
133



137



141



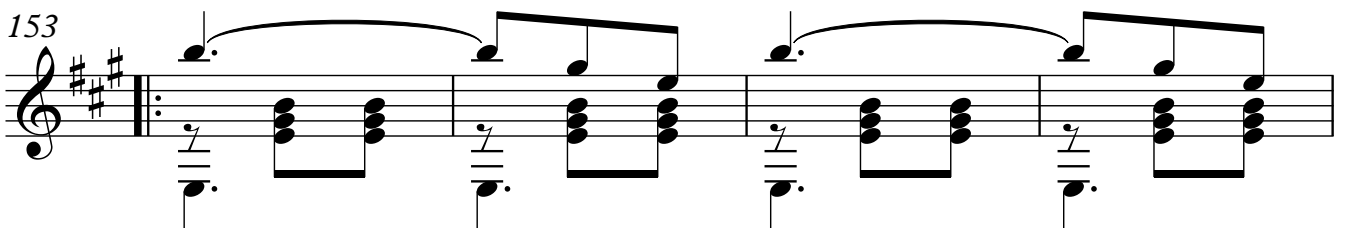
145



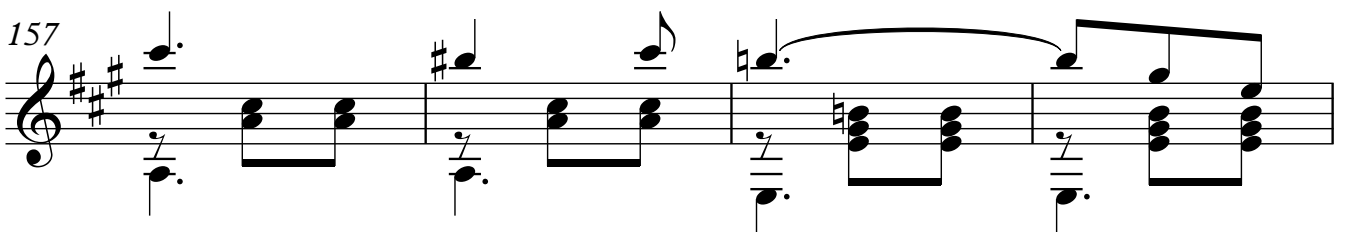
149



153



157



161

165

169

173

177

181

185

189

tr

193

197

201

205

209

213



217

221

226

230

234

237

241

245

249