

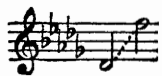
Songs by

TONY JOHNSON

For Voice and Piano



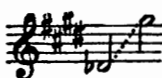
At the Edge of the Sea



The Word



Twilight



Cargoes



The Tired Man

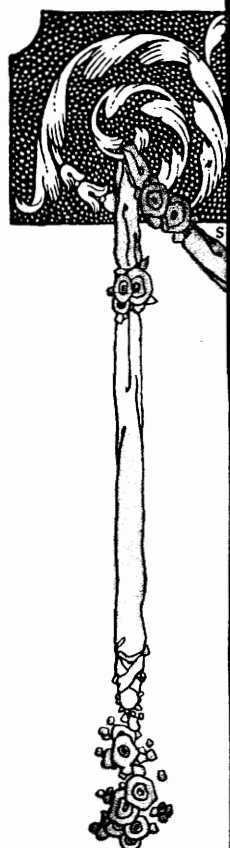


Dry Be that Tear



Price, each, 40 cents, net
(In U. S. A.)

G. Schirmer, Inc. New York



Dedicated to Mary Hoyt Wiborg

Cargoes

John Masefield*

Tom Dobson

Allegretto grazioso

Voice

Piano

mf

mf

Ted. Ted. Ted. Ted. segue

mf

Quin - qui-reme of Nin - e - veh_ from dis - tant O - phir, _____

Row - ing home to ha - ven in sun - ny Pal - es - tine, With a

* The poem "Cargoes" is here printed (through the courtesy of the Macmillan Company) from the collected poems of John Masefield (Macmillan, 1918)

Copyright, 1920, by G. Schirmer, Inc.

Printed in the U. S. A.

car - go of i - vo-ries and apes and pea - cocks,

colla parte

San - dal-wood, ce - dar-wood, and sweet white wine.

State - ly Span - ish

f

mf

gal-leon sail - ing from the Isthmus, Dip - ping through the

2

wa - ters by the palm - green shores, — With a car - go of

sf
poco marcato

dia - monds, Em - e - ralds, Am - e - thysts, To - paz_ and

Cin - na - mon and gold moi - dores.

Dirt - y Brit - ish coast - er with a

salt - caked smoke - stack, But - ting through the Chan - nel in the

mad March days, — With a car - go of Tyne Coal,

colla voce

Road - rails, pig - lead, Fire - wood, I - ron-ware, and

cheap tin trays.

AMERICAN SONGS for ALL SINGERS

*A Group of Successful New Songs That Appear
on the Programs of Many Leading Artists*

BASSETT, K. W., *Passion-Flowers*. High, Low
BRACY, S., *My Little Bundle of Love*. High
CLARK, K. S., *The House by the Side of the
Road*. High, Low
COX, R., *Garden Gossips*. High, Low
CURRAN, P. G., *Nocturne*. High, Med., Low
To Eostra (Spring Song). High, Low
DOBSON, T., *Cargoes*. High or Med., Low
DODGE, M. H. & J. W., *'Tis Springtime*. High,
Low
EDWARDS, C., *A Yesterday*. High
ELLIS, C. O., *God Keep You, Dear (Twilight Song)*.
Medium
GRUNN, H., *When the Dark Mist Curtains the
Doorway*. High, Low
HAGEMAN, R., *Animal Crackers*. High, Low
HUARTE, J., *Madrigal Español (Spanish Madri-
gal)*. High, Low
HUERTER, C., *To-Day*. High, Low
LEONI, F., *Tally-Ho!* High or Med., Low
MANA-Z UCCA, *Ah, Love! Will You Remember?*
High, Low
O'HARA, G., *The Unknown Soldier*. High, Low
OLMSTEAD, C., *Starlight*. High, Low
RASBACH, O., *Trees*. High, Med., Med., Low
ROGERS, J. H., *The Last Song*. High, Med., Low
Love's on the Highroad. High, Low
SPEAKS, O., *A Song of Gladness*. High, Low
Star-Eyes. High, Med., Low
STRICKLAND, L., *Miss You So (A Southern
Song)*. High, or Med.
TURNER-MALEY, F., *A Pastorale*. High, Low
VIBBARD, H. L., *My Garden*. High
WOODMAN, R. H., *Sundown*. High, Low
WORTH, A., *The Time of Violets*. High, Low

*A handsome thematic brochure of these songs, printed in two
colors throughout, will be sent free to any address upon request.*

G. SCHIRMER, INC., NEW YORK