

N. 77^e

RECUEIL

Des Meilleurs Contredanses

Arrangées

Pour le Flageolet

PAR P. J. CHAXELLE

Prix 1^{fr} 25^c

A PARIS

Che. FRERE, Marchand et Graveur de Musique, Passage du Saumon, Rue Montmartre.

Propriété de l'Éditeur.

LA BRAUNAW.
Par Wolff.



LA SERAPHINE.
Par Wolff.

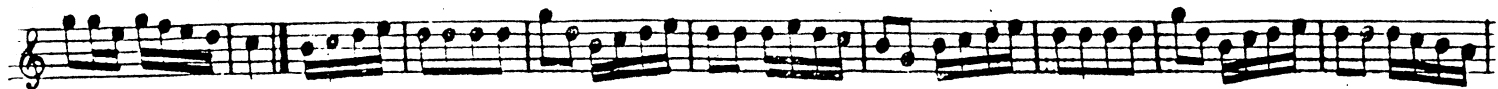


LA DORIMENE.
Par Wolff.





LA POULETTE.
Par Wolff.



LA BETZVARE.
Par Wolff.



LA CHASSE au DAIM.

Par Wolff.

Musical score for 'LA CHASSE au DAIM' by Wolff. The piece is in 6/8 time and consists of three staves of music. The first staff begins with a treble clef, a key signature of one sharp (F#), and a common time signature. The melody is characterized by eighth and sixteenth notes, with some slurs. The second and third staves continue the melody, with the third staff ending with a double bar line and a repeat sign.

L ALEXANDRINE.

Par Wolff.

Musical score for 'L ALEXANDRINE' by Wolff. The piece is in 2/4 time and consists of three staves of music. The first staff begins with a treble clef, a key signature of one sharp (F#), and a 2/4 time signature. The melody is primarily composed of eighth and sixteenth notes. The second and third staves continue the melody, with the third staff ending with a double bar line and a repeat sign.

LA DORSAY.

Par Wolff.

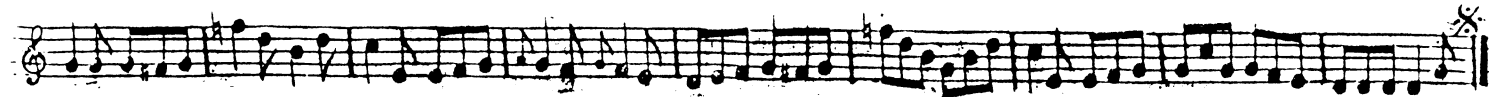
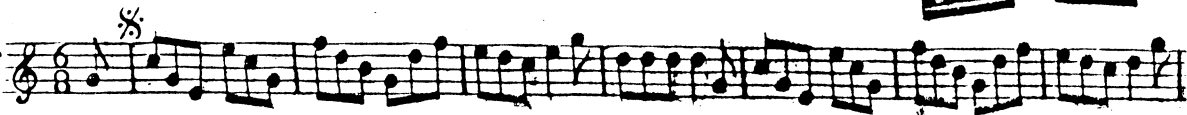
Musical score for 'LA DORSAY' by Wolff. The piece is in 2/4 time and consists of two staves of music. The first staff begins with a treble clef, a key signature of one sharp (F#), and a 2/4 time signature. The melody is primarily composed of eighth and sixteenth notes. The second staff continues the melody, ending with a double bar line and a repeat sign.



L'AUXEROISE.
Par Volff.



La PETITE NANETTE.
Par Joly.



LA NANINE..

Par Joly.

Musical notation for 'LA NANINE..' in G major, 2/4 time. The piece consists of three staves of music. The first staff begins with a treble clef, a key signature of one sharp (F#), and a 2/4 time signature. It features a melody with eighth and sixteenth notes, including a repeat sign with first and second endings. The second and third staves continue the melody, with the third staff ending with a double bar line and a repeat sign.

LA DUCHÉNOIS.

Par Joly.

Musical notation for 'LA DUCHÉNOIS.' in G major, 2/4 time. The piece consists of three staves of music. The first staff begins with a treble clef, a key signature of one sharp (F#), and a 2/4 time signature. It features a melody with eighth and sixteenth notes, including a repeat sign with first and second endings. The second and third staves continue the melody, with the third staff ending with a double bar line and a repeat sign.

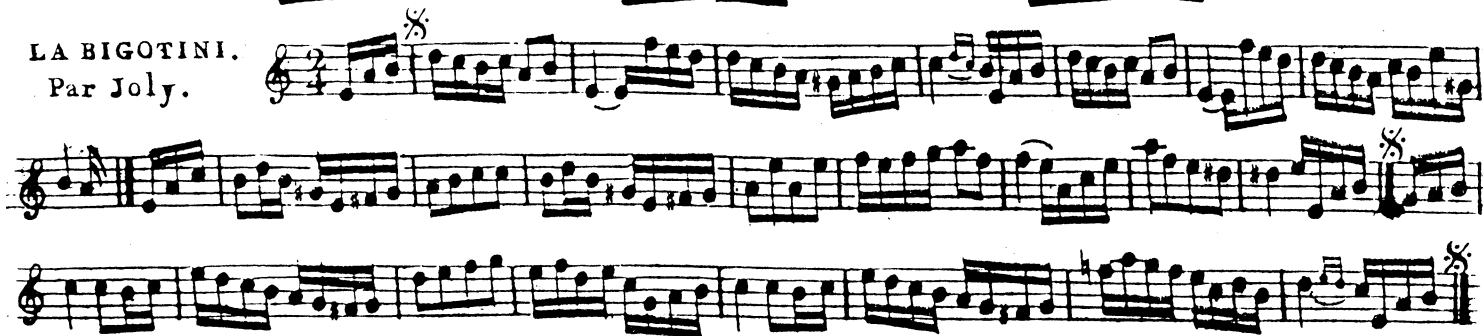
LA BORDELAISE.

Par Volff.

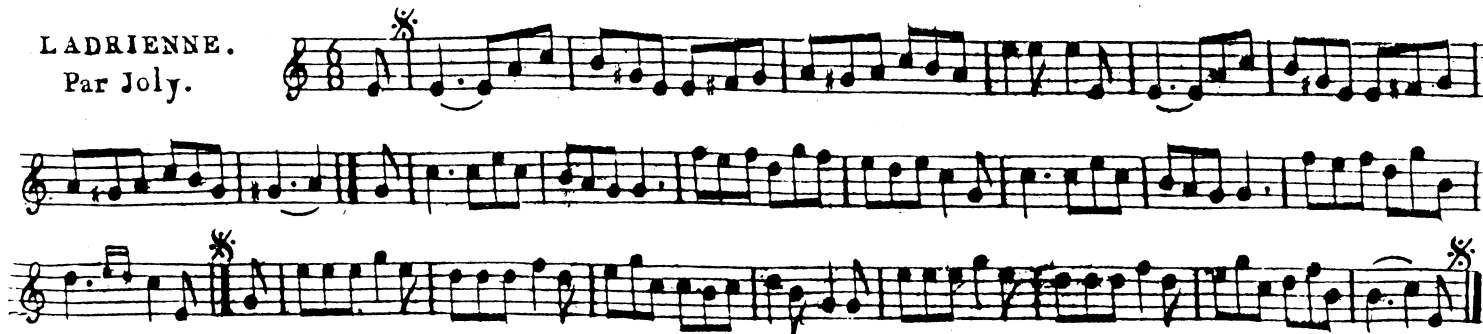
Musical notation for 'LA BORDELAISE.' in G major, 2/4 time. The piece consists of two staves of music. The first staff begins with a treble clef, a key signature of one sharp (F#), and a 2/4 time signature. It features a melody with eighth and sixteenth notes, including a repeat sign with first and second endings. The second staff continues the melody, ending with a double bar line and a repeat sign.



LA BIGOTINI.
Par Joly.



LADRIENNE.
Par Joly.



LA MILLIERE.

Par Joly.



LA VOLLET.

Par Joly.



L'AFRICAINNE.

Par Wolff.

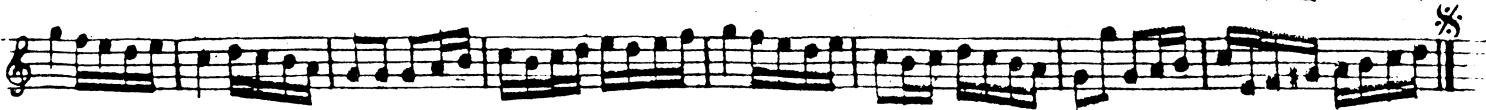
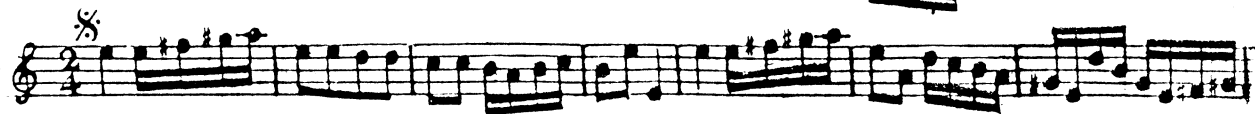




LA MERVEILLEUSE
Par Joly.



LA CHLOÉ.
Par Joly.



LA PRÉCIEUSE.

Par Joly.



LA MAROCAINE.

Par Rose.



La CAPRICIEUSE.

Par Joly.





LA BOUILLOTTE.

Par Rose.



LA BELLE LISE.

Par Rose.



LA PETITE NINETTE.

Par Rose.



L'INCONSTANCE.

Par Rose.



LA FINAL.

Par Wolff.

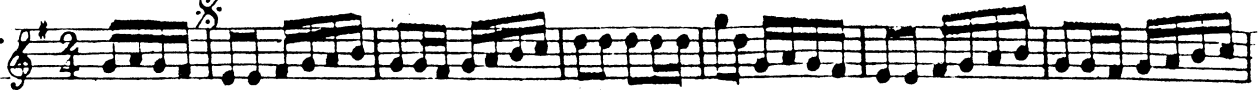




Mlle. CLÉMENTINE.
par Joly.



MANACHARSIS.
Par Rose.



WALTZER.
Par Joly.



WALTZER.
Par Joly.



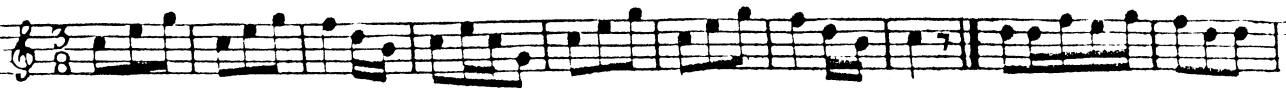
WALTZER.
par Joly.



WALTZER.
Par Wolff.



WALTZER.
Par Wolff.



SAUTEUSE.
Par Joly.

