

OPUS - 244

DOS DUOS

DUO N° 2

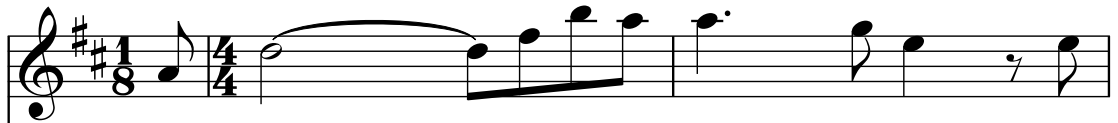
TRANSCRIPCIÓN: LUIS ALVAREZ

FERNANDO CARULLI
(1770_1841)

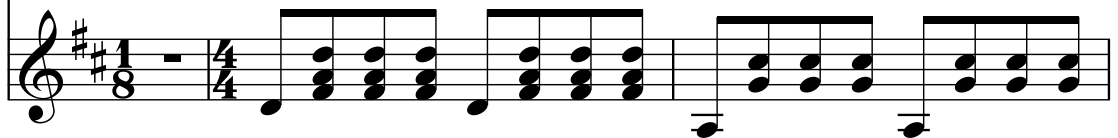
MODERATO

♩=90

Violín



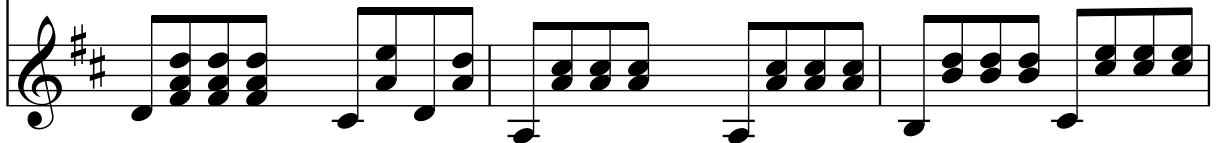
Guitarra



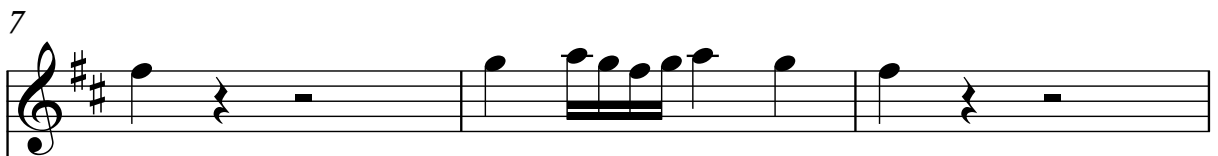
Vln.



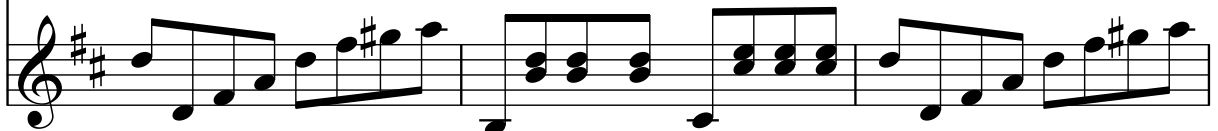
Guit.



Vln.



Guit.



10

Vln.

Guit.

Detailed description: This system contains measures 10, 11, and 12. The Violin part (Vln.) is in treble clef with a key signature of two sharps (F# and C#). It begins with a whole note chord (F#4, C#5), followed by a dotted quarter note (D5), an eighth note (E5), and a quarter note (F#5). The Guitar part (Guit.) is in treble clef with the same key signature. It features a rhythmic accompaniment of eighth notes, primarily in the lower register, with some chords and melodic lines in the upper register.

13

Vln.

Guit.

Detailed description: This system contains measures 13, 14, and 15. The Violin part (Vln.) starts with a quarter note (F#5), followed by eighth notes (G5, A5), and a quarter note (B5). The Guitar part (Guit.) continues with eighth notes, including some chords and rests.

16

Vln.

Guit.

Detailed description: This system contains measures 16, 17, and 18. The Violin part (Vln.) consists of eighth notes (C6, D6, E6, F#6) and quarter notes (G6, A6). The Guitar part (Guit.) features a mix of eighth notes and chords, with some rests.

19

Vln.

Guit.

Detailed description: This system contains measures 19, 20, and 21. The Violin part (Vln.) has quarter notes (G6, A6) and rests. The Guitar part (Guit.) continues with eighth notes and chords, ending with a quarter note (F#6).

22

Vln.

Guit.

25

Vln.

tr

Guit.

28

Vln.

Guit.

31

Vln.

Guit.

Plus Vite

4

♩=120

34

Vln.

Violin staff for measures 34-35. The key signature is two sharps (F# and C#). The melody consists of eighth and quarter notes.

Guit.

Guitar staff for measures 34-35. The accompaniment features a rhythmic pattern of eighth notes and chords.

37

Vln.

Violin staff for measures 37-38. The melody continues with eighth and quarter notes.

Guit.

Guitar staff for measures 37-38. The accompaniment continues with a rhythmic pattern of eighth notes and chords.

40

Vln.

Violin staff for measures 40-41. The melody continues with eighth and quarter notes.

Guit.

Guitar staff for measures 40-41. The accompaniment continues with a rhythmic pattern of eighth notes and chords.

43

Vln.

Violin staff for measures 43-44. The melody includes some rests and eighth notes.

Guit.

Guitar staff for measures 43-44. The accompaniment includes some rests and eighth notes.

46

Vln.

Guit.

49

Vln.

Guit.

52

Vln.

Guit.

55

Vln.

Guit.

58

Vln.

Guit.

Detailed description: This system contains measures 58, 59, and 60. The Violin part (Vln.) is in treble clef with a key signature of two sharps (F# and C#). It begins with a quarter note G4, followed by eighth notes A4, B4, and C5. Measure 59 has a quarter rest, and measure 60 has a dotted quarter note G4. The Guitar part (Guit.) is in treble clef with the same key signature. It features a rhythmic accompaniment of eighth notes: G4, A4, B4, C5 in the upper voice, and G3, A3, B3, C4 in the lower voice. There are quarter rests in the upper voice of measures 59 and 60.

61

Vln.

Guit.

Detailed description: This system contains measures 61, 62, and 63. The Violin part (Vln.) has a quarter rest in measure 61, a dotted quarter note G4 in measure 62, and a quarter note G4 in measure 63. The Guitar part (Guit.) continues with the same eighth-note accompaniment as in the previous system.

64

Vln.

Guit.

Detailed description: This system contains measures 64, 65, and 66. The Violin part (Vln.) starts with a dotted quarter note G4 in measure 64, followed by eighth notes A4, B4, and C5 in measure 65. Measure 66 has a whole note G4. The Guitar part (Guit.) continues with the eighth-note accompaniment.

67

Vln.

Guit.

Detailed description: This system contains measures 67, 68, and 69. The Violin part (Vln.) has a whole note G4 in measure 67, a whole note G4 in measure 68, and eighth notes G4, A4, B4, C5 in measure 69. The Guitar part (Guit.) continues with the eighth-note accompaniment.

70

Vln.

Guit.

Detailed description: This system contains measures 70, 71, and 72. The Violin part (Vln.) is written on a treble clef staff with a key signature of two sharps (F# and C#). It features a melodic line with eighth and sixteenth notes, including some grace notes. The Guitar part (Guit.) is also on a treble clef staff with the same key signature. It consists of a rhythmic accompaniment with a mix of eighth and sixteenth notes, often beamed together, and includes some rests.

73

Vln.

Guit.

Detailed description: This system contains measures 73, 74, and 75. The Violin part continues with a melodic line, showing some dotted rhythms and eighth-note patterns. The Guitar part features a more complex accompaniment with many beamed sixteenth notes and some chords, maintaining the rhythmic drive.

76

Vln.

Guit.

Detailed description: This system contains measures 76, 77, and 78. The Violin part has a melodic line with some dotted notes and eighth-note runs. The Guitar part continues with its rhythmic accompaniment, featuring beamed sixteenth notes and some chordal textures.

79

Vln.

Guit.

Detailed description: This system contains measures 79, 80, and 81. The Violin part concludes with a melodic line that includes a sixteenth-note run. The Guitar part provides a final accompaniment with beamed sixteenth notes and some chordal structures.

82

Vln.

Guit.

84

Vln.

Guit.

ALEGRETO GRACIOSO

$\text{♩} = 100$

87

Vln.

Guit.

90

Vln.

Guit.

93

Vln.

Guit.

96

Vln.

Guit.

99

Vln.

Guit.

102

Vln.

Guit.

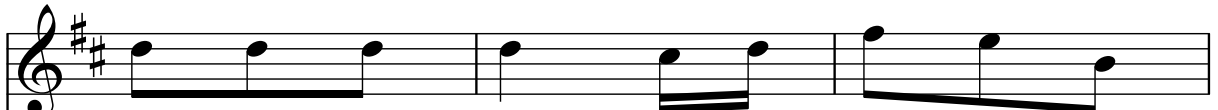
105

Vln.  Guit. 

108

Vln.  Guit. 

111

Vln.  Guit. 

114

Vln.  Guit. 

117

Vln.

129

Vln.

Guit.

132

Vln.

Guit.

135

Vln.

Guit.

138

Vln.

Guit.

141

Vln.

Guit.

Detailed description: This system contains measures 141, 142, and 143. The Violin part (Vln.) starts with a whole note G4, followed by a quarter rest, then a quarter note A4, and a quarter note B4. The Guitar part (Guit.) features a descending eighth-note scale from G4 to D4 in the first measure, followed by a quarter note E4, and a quarter note F4. The second measure of the guitar has a dotted quarter note G4 and an eighth note F4. The third measure has a quarter note G4, a quarter note F4, and a quarter note E4. The key signature has two sharps (F# and C#).

144

Vln.

Guit.

Detailed description: This system contains measures 144, 145, and 146. The Violin part (Vln.) has a quarter note G4, a quarter note A4, and a quarter note B4. The Guitar part (Guit.) has a quarter note G4, a quarter note A4, and a quarter note B4. The second measure of the guitar has a quarter note C5, a quarter note B4, and a quarter note A4. The third measure has a quarter note G4, a quarter note F4, and a quarter note E4. The key signature has two sharps (F# and C#).

147

Vln.

Guit.

Detailed description: This system contains measures 147, 148, and 149. The Violin part (Vln.) has a quarter note G4, a quarter note A4, and a quarter note B4. The Guitar part (Guit.) has a quarter note G4, a quarter note A4, and a quarter note B4. The second measure of the guitar has a quarter note C5, a quarter note B4, and a quarter note A4. The third measure has a quarter note G4, a quarter note F4, and a quarter note E4. The key signature has two sharps (F# and C#).

150

Vln.

Guit.

Detailed description: This system contains measures 150, 151, and 152. The Violin part (Vln.) has a quarter note G4, a quarter note A4, and a quarter note B4. The Guitar part (Guit.) has a quarter note G4, a quarter note A4, and a quarter note B4. The second measure of the guitar has a quarter note C5, a quarter note B4, and a quarter note A4. The third measure has a quarter note G4, a quarter note F4, and a quarter note E4. The key signature has two sharps (F# and C#).

153

Vln.

Guit.

Detailed description: This system contains measures 153, 154, and 155. The Violin part (Vln.) is written in treble clef with a key signature of two sharps (F# and C#). It features a melodic line with eighth and sixteenth notes, including a triplet in measure 154. The Guitar part (Guit.) is also in treble clef with the same key signature. It provides a harmonic accompaniment with chords and single notes, including a triplet in measure 154. Both parts include rests and slurs.

156

Vln.

Guit.

Detailed description: This system contains measures 156, 157, and 158. The Violin part (Vln.) continues the melodic line with eighth and sixteenth notes. The Guitar part (Guit.) continues the accompaniment with chords and single notes, including a triplet in measure 158. Both parts include rests and slurs.

159

Vln.

Guit.

Detailed description: This system contains measures 159, 160, and 161. The Violin part (Vln.) has a rest in measure 159 and 160, followed by a melodic phrase in measure 161. The Guitar part (Guit.) continues the accompaniment with chords and single notes, including a triplet in measure 161. Both parts include rests and slurs.

162

Vln.

Guit.

Detailed description: This system contains measures 162, 163, and 164. The Violin part (Vln.) has a rest in measure 162 and 163, followed by a melodic phrase in measure 164. The Guitar part (Guit.) continues the accompaniment with chords and single notes, including a triplet in measure 164. Both parts include rests and slurs.

165

Vln.

Guit.

Detailed description: This system covers measures 165 to 167. The Violin part (Vln.) has a treble clef and a key signature of two sharps (F# and C#). It features a melodic line with eighth and sixteenth notes, including slurs and accents. The Guitar part (Guit.) has a treble clef and a key signature of two sharps. It consists of a bass line with eighth and sixteenth notes, including slurs and accents. The music is in a 2/4 time signature.

168

Vln.

Guit.

Detailed description: This system covers measures 168 to 170. The Violin part (Vln.) has a treble clef and a key signature of two sharps. It features a melodic line with eighth and sixteenth notes, including slurs and accents. The Guitar part (Guit.) has a treble clef and a key signature of two sharps. It consists of a bass line with eighth and sixteenth notes, including slurs and accents. The music is in a 2/4 time signature.

171

Vln.

Guit.

Detailed description: This system covers measures 171 to 173. The Violin part (Vln.) has a treble clef and a key signature of two sharps. It features a melodic line with eighth and sixteenth notes, including slurs and accents. The Guitar part (Guit.) has a treble clef and a key signature of two sharps. It consists of a bass line with eighth and sixteenth notes, including slurs and accents. The music is in a 2/4 time signature.

174

Vln.

Guit.

Detailed description: This system covers measures 174 to 176. The Violin part (Vln.) has a treble clef and a key signature of two sharps. It features a melodic line with eighth and sixteenth notes, including slurs and accents. The Guitar part (Guit.) has a treble clef and a key signature of two sharps. It consists of a bass line with eighth and sixteenth notes, including slurs and accents. The music is in a 2/4 time signature.

177

Vln.

Guit.

Detailed description: This system covers measures 177, 178, and 179. The Violin part (Vln.) is written in treble clef with a key signature of two sharps (F# and C#). It features a melodic line with eighth and sixteenth notes, including some triplets. The Guitar part (Guit.) is also in treble clef and features a complex rhythmic accompaniment with many sixteenth notes and triplets, interspersed with some chords and rests.

180

Vln.

Guit.

Detailed description: This system covers measures 180, 181, and 182. The Violin part continues with a melodic line, showing some slurs and dynamic markings. The Guitar part maintains its intricate accompaniment with various rhythmic patterns and chordal textures.

183

Vln.

Guit.

Detailed description: This system covers measures 183, 184, and 185. The Violin part has a more active melodic line with many sixteenth notes. The Guitar part continues with its complex accompaniment, featuring some slurs and dynamic markings.

186

Vln.

Guit.

Detailed description: This system covers measures 186, 187, and 188. The Violin part shows some rests and dynamic markings. The Guitar part continues with its complex accompaniment, featuring some slurs and dynamic markings.

189

Vln.

Guit.

192

Vln.

Guit.

195

Vln.

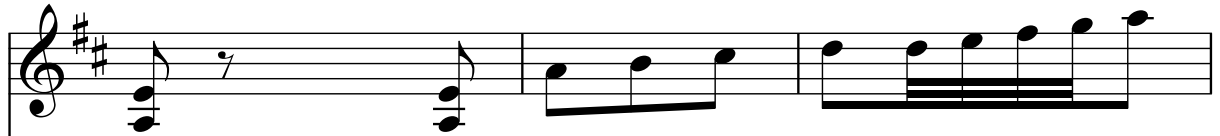
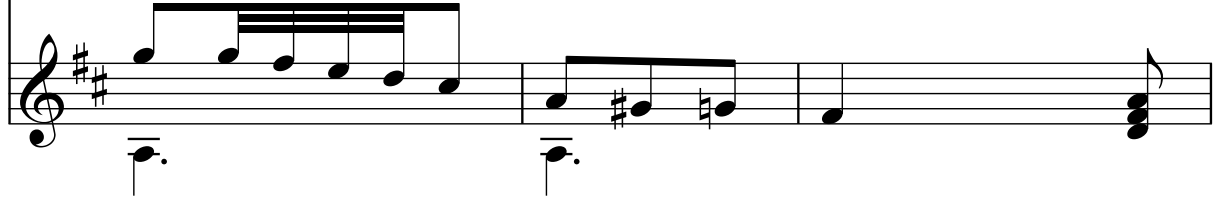
Guit.

198

Vln.

Guit.

201

Vln. 
 Guit. 

204

Vln. 
 Guit. 


207

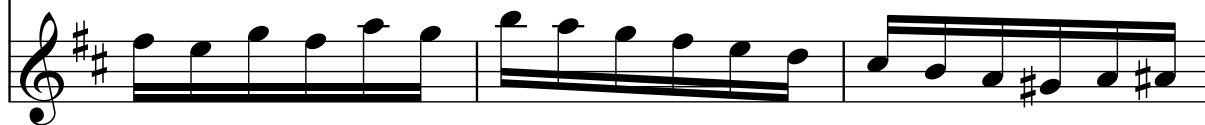
Vln. 
 Guit. 

210


Vln. 
 Guit. 

213

Vln. 

Guit. 

216

Vln. 


Guit. 

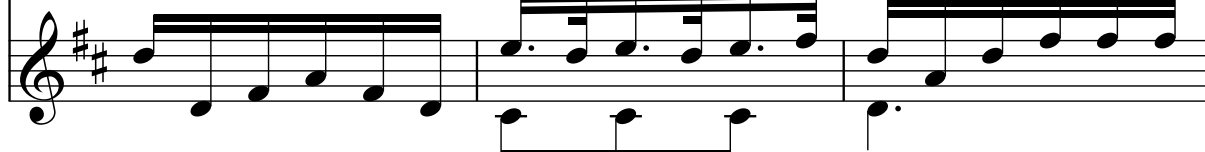
219

Vln. 


Guit. 

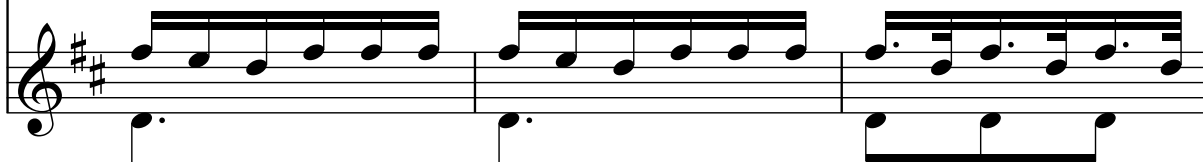
222

Vln. 

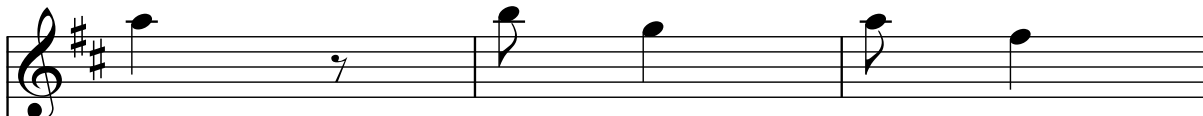
Guit. 

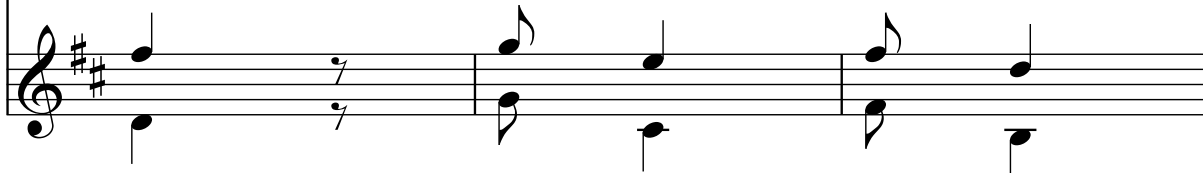
225

Vln. 

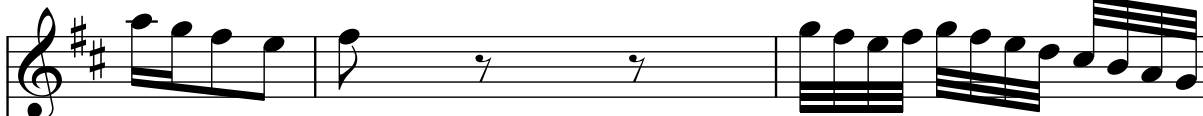
Guit. 


228

Vln. 

Guit. 

231

Vln. 

Guit. 

234

Vln. 

Guit. 

237

Vln.

Guit.

Detailed description: This system covers measures 237 to 240. The Violin part (Vln.) is written in treble clef with a key signature of two sharps (F# and C#). It features a continuous sixteenth-note melody. The Guitar part (Guit.) is also in treble clef with the same key signature. It consists of a steady eighth-note accompaniment in the lower register, with some chords in the higher register.

240

Vln.

Guit.

Detailed description: This system covers measures 240 to 243. In measure 240, the Violin part has rests for the first two measures, indicated by a '7' (fermata), followed by a melodic phrase. The Guitar part continues with its accompaniment. Measures 241 and 242 show the Violin playing a melodic line while the Guitar accompaniment remains. Measure 243 shows the Violin with another fermata.

243

Vln.

Guit.

Detailed description: This system covers measures 243 to 246. The Violin part (Vln.) resumes its melodic line in measure 243. The Guitar part (Guit.) continues with its accompaniment, which includes some chords in the higher register.

246

Vln.

Guit.

Detailed description: This system covers measures 246 to 249. The Violin part (Vln.) continues its melodic line. In measure 249, the Violin has a fermata. The Guitar part (Guit.) continues with its accompaniment throughout the system.

249

Vln.

Guit.

Detailed description: This system covers measures 249 to 251. The Violin part (Vln.) is in treble clef with a key signature of two sharps (F# and C#). It features a melodic line with eighth notes in measures 249 and 251, and rests in measure 250. The Guitar part (Guit.) is in treble clef with the same key signature. It plays a complex accompaniment with sixteenth-note patterns in the upper register and a bass line with eighth notes in the lower register.

252

Vln.

Guit.

Detailed description: This system covers measures 252 and 253. The Violin part (Vln.) continues with a melodic line of eighth notes. The Guitar part (Guit.) maintains its accompaniment pattern, with a steady bass line and intricate upper-register figures.

254

Vln.

Guit.

Detailed description: This system covers measures 254 and 255. The Violin part (Vln.) has a melodic line in measure 254 and a whole rest in measure 255. The Guitar part (Guit.) continues with its accompaniment throughout both measures.

256

Vln.

Guit.

Detailed description: This system covers measures 256 to 258. The Violin part (Vln.) has a sparse melodic line with eighth notes and rests. The Guitar part (Guit.) continues with its accompaniment, featuring some chordal textures in the lower register.