

OPUS - 195

PARTE 2

NUMERO 2

TRANSCRIPCIÓN: LUIS ALVAREZ

FERNANDO CARULLI

(1770-1841)

$\text{♩} = 60$

Violín



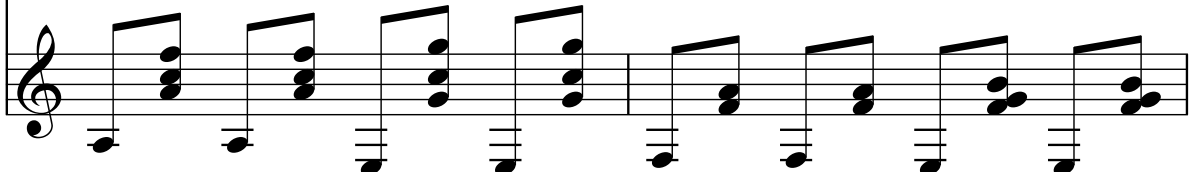
Guitarra



Vln.



Guit.



2

5

Vln.

Guit.

Detailed description: This system contains measures 5 and 6. The Violin part (Vln.) is written on a single staff with a treble clef. Measure 5 contains two half notes: G4 and B4. Measure 6 contains a whole note G4. The Guitar part (Guit.) is written on a single staff with a treble clef. It features a rhythmic pattern of eighth notes in pairs, starting with G2 and B2 in measure 5, and ending with a whole rest in measure 6.

7

Vln.

Guit.

Detailed description: This system contains measures 7 and 8. The Violin part (Vln.) is written on a single staff with a treble clef. Measure 7 contains a whole rest, and measure 8 contains two half notes: G4 and B4. The Guitar part (Guit.) is written on a single staff with a treble clef. It continues the rhythmic pattern of eighth notes in pairs, with a sharp sign (#) appearing under the G2 note in measure 8, and ending with a whole rest.

9

Vln.

Guit.

Detailed description: This system contains measures 9 and 10. The Violin part (Vln.) is written on a single staff with a treble clef. Measure 9 contains two half notes: G4 and B4. Measure 10 contains two half notes: G4 and B4. The Guitar part (Guit.) is written on a single staff with a treble clef. It continues the rhythmic pattern of eighth notes in pairs, with a sharp sign (#) appearing under the G2 note in measure 9, and ending with a whole rest.

11

Vln.

Guit.

Detailed description: This system contains measures 11 and 12. The Violin part (Vln.) is written on a single staff with a treble clef. Measure 11 contains two half notes: G4 and B4. Measure 12 contains a whole note G4. The Guitar part (Guit.) is written on a single staff with a treble clef. It continues the rhythmic pattern of eighth notes in pairs, ending with a whole rest in measure 12.