

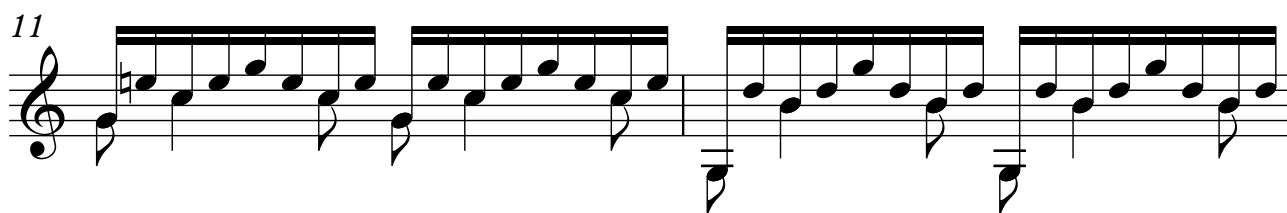
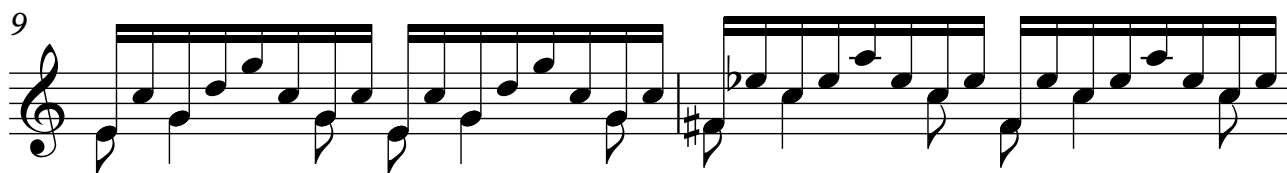
24 preludios

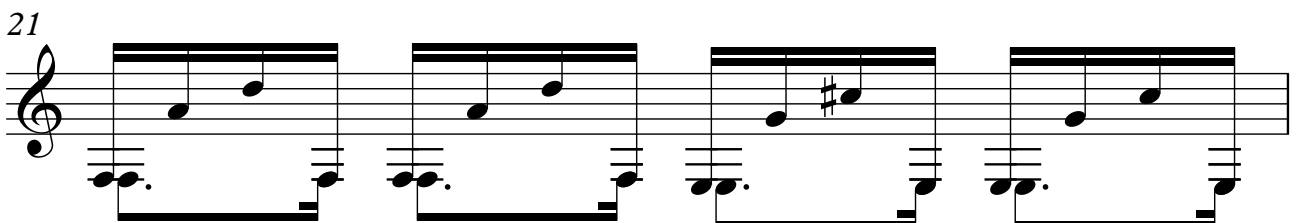
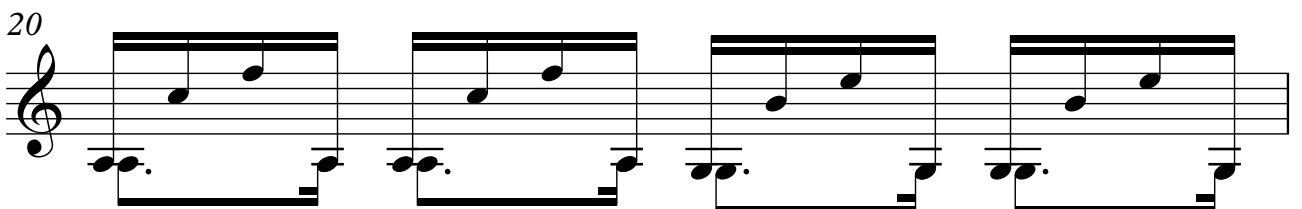
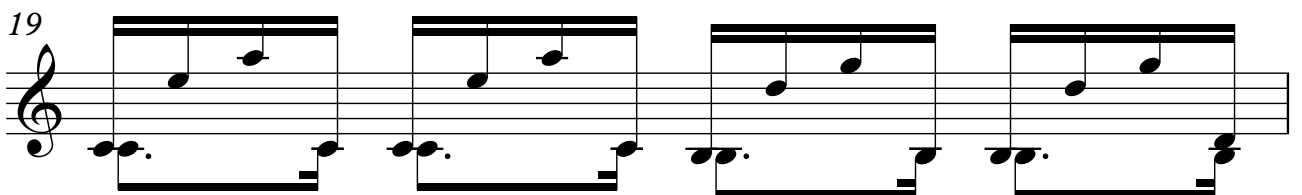
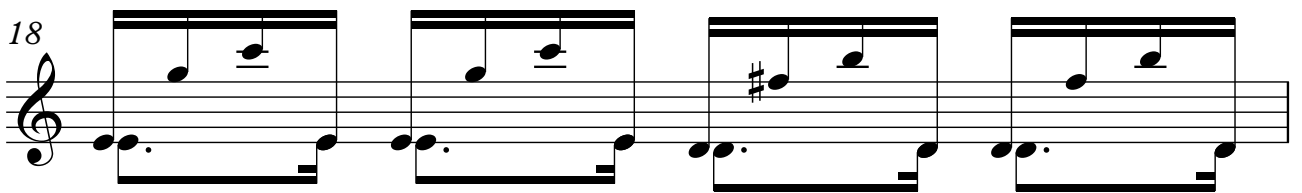
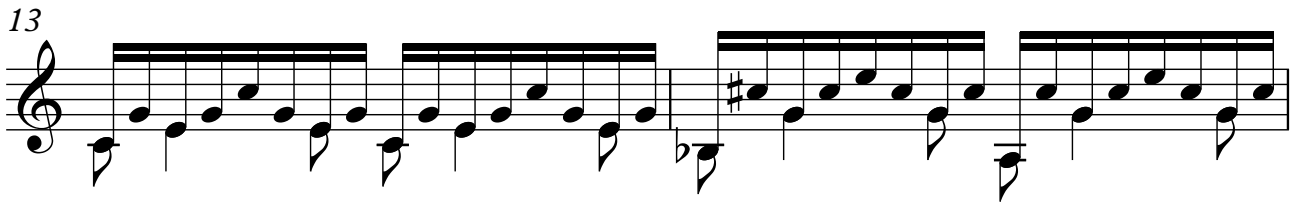
Número - 24

TRANSCRIPCIÓN: LUIS ALVAREZ

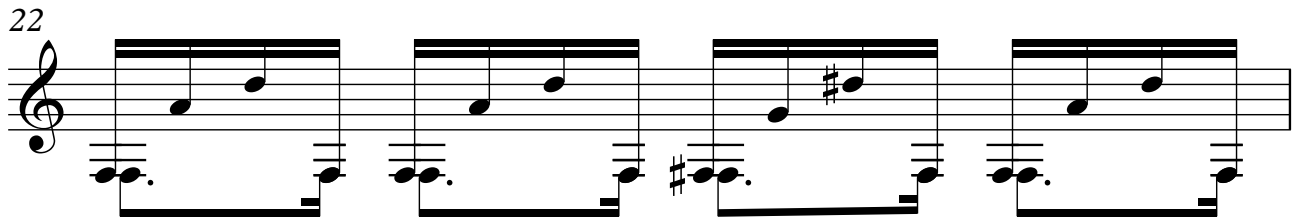
FERNANDO CARULLI
(1770-1841)

♩ = 90





22



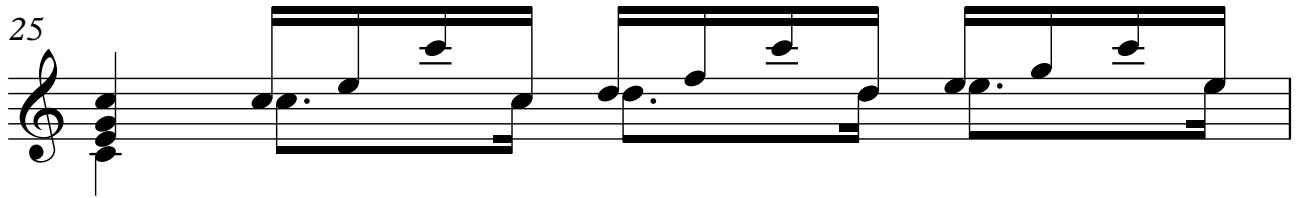
Musical notation for measure 22, featuring a treble clef and a key signature of one sharp (F#). The melody consists of quarter notes: G4, A4, B4, C5, D5, E5, F#5, G5. The bass line consists of dotted quarter notes: G2, A2, B2, C3, D3, E3, F#3, G3.

23




Musical notation for measure 23, featuring a treble clef and a key signature of one sharp (F#). The melody consists of eighth notes: G4, A4, B4, C5, D5, E5, F#5, G5. The bass line consists of eighth notes: G2, A2, B2, C3, D3, E3, F#3, G3.

25



Musical notation for measure 25, featuring a treble clef and a key signature of one sharp (F#). The melody consists of quarter notes: G4, A4, B4, C5, D5, E5, F#5, G5. The bass line consists of dotted quarter notes: G2, A2, B2, C3, D3, E3, F#3, G3.

26



Musical notation for measure 26, featuring a treble clef and a key signature of one sharp (F#). The melody consists of quarter notes: G4, A4, B4, C5, D5, E5, F#5, G5. The bass line consists of dotted quarter notes: G2, A2, B2, C3, D3, E3, F#3, G3.

27



Musical notation for measure 27, featuring a treble clef and a key signature of one sharp (F#). The melody consists of quarter notes: G4, A4, B4, C5, D5, E5, F#5, G5. The bass line consists of dotted quarter notes: G2, A2, B2, C3, D3, E3, F#3, G3.

28



Musical notation for measure 28, featuring a treble clef and a key signature of one sharp (F#). The melody consists of quarter notes: G4, A4, B4, C5, D5, E5, F#5, G5. The bass line consists of dotted quarter notes: G2, A2, B2, C3, D3, E3, F#3, G3.

29



Musical notation for measure 29, featuring a treble clef and a key signature of one sharp (F#). The melody consists of quarter notes: G4, A4, B4, C5, D5, E5, F#5, G5. The bass line consists of dotted quarter notes: G2, A2, B2, C3, D3, E3, F#3, G3.

