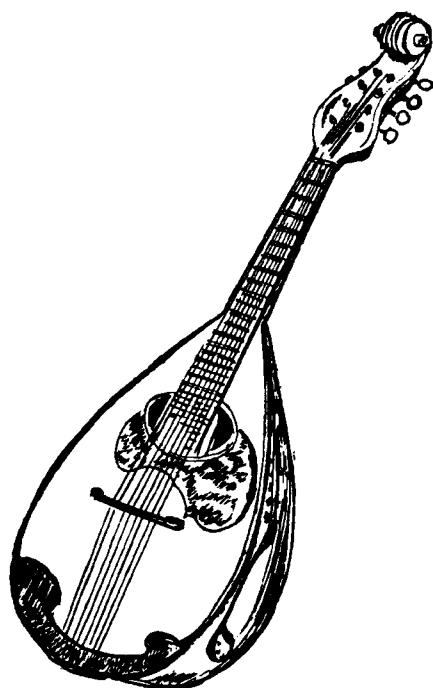


Raffaele Calace

Op. 65 4° Preludio

(Liuto solo)



Edizioni Calace

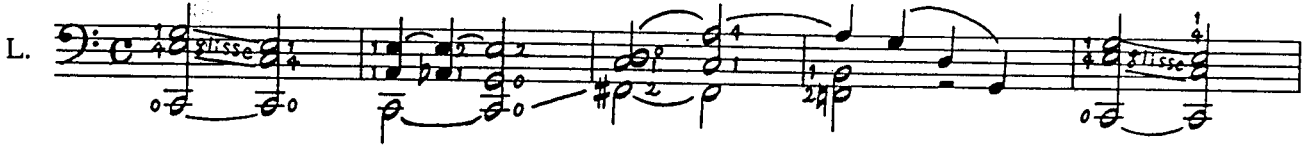
06502-00

www.calace.it - racalace@tin.it - +39(0)81 5515983

N Preludio

Op. 65

pianissimo tremolo leggero

L. 



armonioso

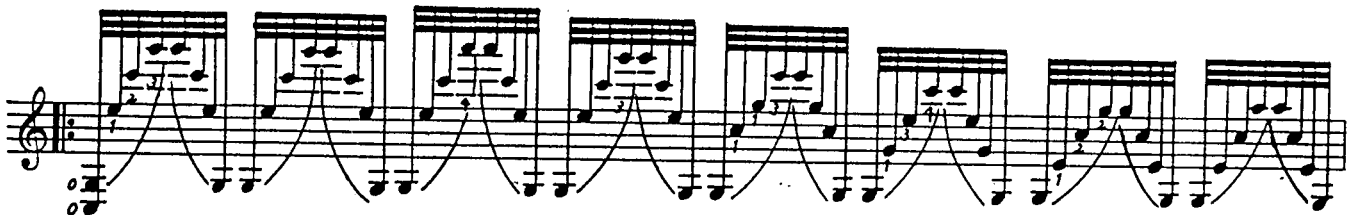


a piacere

A single musical staff in treble clef. It begins with a long melodic line starting on G4, moving up stepwise to C5, then down to B4, A4, G4, F4, E4, D4, C4. A fermata is placed over the final C4 note. The staff then continues with a descending melodic line: B4, A4, G4, F4, E4, D4, C4, B3, A3, G3, F3, E3, D3, C3.

cantabile

A musical staff in treble clef with piano accompaniment. The melody is written in a higher register, starting on G4. The accompaniment consists of chords and single notes. Fingerings are indicated by numbers 1-4. Dynamics include *pp* and *poll.*A musical staff in treble clef with piano accompaniment. The melody is written in a higher register. The accompaniment consists of chords and single notes. Fingerings are indicated by numbers 1-4. Dynamics include *poll.* and *rall.*. The word *Tempo* is written above the staff.A musical staff in treble clef with piano accompaniment. The melody is written in a higher register. The accompaniment consists of chords and single notes. Fingerings are indicated by numbers 1-4. Dynamics include *poll.*A musical staff in treble clef with piano accompaniment. The melody is written in a higher register. The accompaniment consists of chords and single notes. Fingerings are indicated by numbers 1-4. Dynamics include *poll.*A musical staff in treble clef with piano accompaniment. The melody is written in a higher register. The accompaniment consists of chords and single notes. Fingerings are indicated by numbers 1-4. Dynamics include *poll.*A musical staff in treble clef with piano accompaniment. The melody is written in a higher register. The accompaniment consists of chords and single notes. Fingerings are indicated by numbers 1-4. Dynamics include *poll.*



Poll.

posizione

glisse

pp