



# HE WHO MOVES IN THE DEW

SONG



WORDS BY

NELLE RICHMOND EBERHART



Music by

CHARLES WAKEFIELD  
CADMAN

---

*Price 60 cents*

---

WHITE-SMITH MUSIC PUBLISHING ©  
BOSTON — NEW YORK — CHICAGO.

To our friend Grace Hall-Riheldaffer

## HE WHO MOVES IN THE DEW\*



NELLE RICHMOND EBERHART

CHARLES WAKEFIELD CADMAN

*Andante grazioso*

VOICE

PIANO

*mf*

*rall.*

*Allegretto con semplicita*

He — who moves in the dew is wait - ing — Under the wil - lows, — be - side the sun - set

*mp*

*meno mosso*

*pp*

wat - ers; — I - dle is his ca - noe, —

*pp*

\*Chippewa theme collected by  
Frances Densmore

14916-4

Copyright, 1916, by White-Smith Music Publishing Co.  
International Copyright Secured

*f con moto*

qui - et the pad-dles, But his heart I know is

The first system features a vocal line in treble clef with lyrics "qui - et the pad-dles, But his heart I know is". The piano accompaniment is in G major and 4/4 time, with a dynamic marking of *f con moto*. The piano part includes a complex arpeggiated figure in the right hand and a more rhythmic bass line in the left hand.

leaping, Hop-ing I come.

*cres* - - - *cen* - - - *do*

The second system continues the vocal line with lyrics "leaping, Hop-ing I come." and includes a piano accompaniment with a dynamic marking of *cres* (crescendo) and *cen* (crescendo) leading to a *do* note. The piano part features a prominent arpeggiated pattern in the right hand.

*ff*

*l.h.*

The third system is primarily piano accompaniment, marked *ff* (fortissimo). It features a complex, rhythmic arpeggiated pattern in the right hand and a steady bass line in the left hand. A *l.h.* (left hand) marking is present above the final measure.

*mp tranquillo*

So shall I leave the lodge at moon - rise, Soshall I

*rall.* *a tempo, colla voce*

The fourth system features a vocal line in treble clef with lyrics "So shall I leave the lodge at moon - rise, Soshall I". The piano accompaniment is marked *mp tranquillo* and *a tempo, colla voce*. The piano part includes a *rall.* (rallentando) section followed by a return to *a tempo, colla voce*.

move si - lent-ly thro' the dark - ness,

*mf*  
Fol - low-ing the sig-nal of his flute call.

*mf*

*mp*  
He whomoves in the dew is wait-ing, He

*mp*

*più mosso*  
watch-es, watch-es thro'the drooping wil-low branch - es, He

*più animato pp*

*marcato il basso*

list - ens, \_\_\_\_\_ list-ens for my step on the gras - ses, \_\_\_\_\_ Know-ing I  
*con esultazione*

come, \_\_\_\_\_

*mf più mosso* *deliberato mp*

*pp appassionata* **Tempo I**

Know-ing I come!

*l.h.* *delicato* *mf* *mp*

*poco rall. e morendo* *pp*

# LOVE'S WITCHERIE



J. P. LUDSBUEHL

**Allegretto scherzando**

Dear, dain-ty dai - sy, deign to be  
Kind ly so poor love- lorn me. Do but smile up - on my love.  
See how grate-ful I shall prove

Copyright, 1916, by White-Smith Music Publishing Co.  
International Copyright Secured

# Shadow-Town.



P. DEMPSTER SHERMAN\*

CHARLES P. SCOTT.

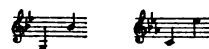
**Con espressione.**

All up and down in Shad-ow-town The  
Shad-ow chil-dren go; In ev-ry street you're sure to meet Them run-ning to and  
fro; They move a-round with-out a sound, They play at hide and seek, But

\*Special arrangement WPA Houghton, Mifflin & Co.,  
Publishers of Mr. Sherman's "Little Path Lyrics."

Copyright, 1917, by White-Smith Music Publishing Co.  
International Copyright Secured.

# The Music of the Marshes



CLARA GRIFFITH GAZZAM\*

GOTTFRIED H. FEDERLE\*\*

**Moderato**

VOICE The wind creeps in from off the sea And  
wakes the marsh to life, Un-til each grass blade seems to  
be A thine with pas-sion life, A

PIANO

\*Courtesy of 'The Outlook' Co.

Copyright, 1911, by White-Smith Music Publishing Co.  
International Copyright Secured.

To Good Faming

# THE VOICE OF THE DOVE



JOAQUIN MILLER

CHARLES S. BURMEAN

**Allegretto scherzando**

PIANO

Come list-en, O Love, to the voice of the dove, Come  
hark-on and hear him say. There are

Copyright, 1915, by White-Smith Music Publishing Co.  
International Copyright Secured