

HE WHO MOVES IN THE DEW

SONG



WORDS BY

NELLE RICHMOND EBERHART



Music by

CHARLES WAKEFIELD
CADMAN

Price 60 cents

WHITE-SMITH MUSIC PUBLISHING ©
BOSTON — NEW YORK — CHICAGO.

To our friend Grace Hall-Riheldaffer

HE WHO MOVES IN THE DEW*



NELLE RICHMOND EBERHART

CHARLES WAKEFIELD CADMAN

Andante grazioso

VOICE

PIANO

mf

rall.

Allegretto con semplicita

He — who moves in the dew is wait - ing — Under the wil - lows, — be - side the sun - set

mp

meno mosso

pp

wat - ers; — I - dle is his ca - noe, —

pp

*Chippewa theme collected by
Frances Densmore

14916-4

Copyright, 1916, by White-Smith Music Publishing Co.
International Copyright Secured

f con moto

qui - et the pad-dles, But his heart I know is

The first system features a vocal line in treble clef with lyrics "qui - et the pad-dles, But his heart I know is". The piano accompaniment consists of two staves: the right hand in treble clef and the left hand in bass clef. The key signature has one sharp (F#) and the time signature is 4/4. The piano part includes various rhythmic patterns, including eighth and sixteenth notes, and rests. Dynamics include *f* and *mf*. Fingerings are indicated with numbers 1-5.

leaping, Hop-ing I come.

cres - - - *cen* - - - *do*

The second system continues the vocal line with lyrics "leaping, Hop-ing I come." and includes the word "do" at the end. The piano accompaniment continues with similar rhythmic patterns. Dynamics include *cres* and *cen*. Fingerings are indicated with numbers 1-5.

ff

l.h.

The third system is primarily piano accompaniment. The right hand is in treble clef and the left hand is in bass clef. The dynamics are marked *ff*. The notation includes various rhythmic patterns and rests. A first ending bracket labeled "l.h." is present at the end of the system.

mp tranquillo

So shall I leave the lodge at moon - rise, So shall I

rall. *a tempo, colla voce*

The fourth system features a vocal line in treble clef with lyrics "So shall I leave the lodge at moon - rise, So shall I". The piano accompaniment consists of two staves: the right hand in treble clef and the left hand in bass clef. The key signature has one sharp (F#) and the time signature is 4/4. The piano part includes various rhythmic patterns, including eighth and sixteenth notes, and rests. Dynamics include *mp*, *rall.*, and *a tempo, colla voce*. Fingerings are indicated with numbers 1-5.

move si - lent-ly thro' the dark - ness,

mf
Fol - low-ing the sig-nal of his flute call.

mf

mp
He whomoves in the dew is wait-ing, He

mp

più mosso
watch-es, watch-es thro'the drooping wil-low branch - es, He

più animato pp

marcato il basso

list - ens, _____ list-ens for my step on the gras - ses, _____ Know-ing I
con esultazione

come, _____

mf più mosso *deliberato mp*

pp appassionata **Tempo I**

Know-ing I _____ come! _____

l.h. delicato mf mp

poco rall. e morendo *pp*

LOVE'S WITCHERIE



J. P. LUDSBUHEL

Allegretto scherzando

Dear, dain-ty dai - sy, deign to be
Kind ly so poor love- lorn me. Do but smile up - on my love.
See how grate-ful I shall prove

Copyright, 1916, by White-Smith Music Publishing Co.
International Copyright Secured

Shadow-Town.



P. DEMPSTER SHERMAN*

CHARLES P. SCOTT.

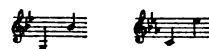
Con espressione.

All up and down in Shad-ow-town The
Shad-ow chil-dren go; In ev-ry street you're sure to meet Them run-ning to and
fro; They move a-round with-out a sound, They play at hide and seek, But

*Special arrangement WPA Houghton, Mifflin & Co.,
Publishers of Mr. Sherman's "Little Path Lyrics."

Copyright, 1917, by White-Smith Music Publishing Co.
International Copyright Secured.

The Music of the Marshes



CLARA GRIFFITH GAZZAM*

GOTTFRIED H. FEDERLE**

Moderato

VOICE The wind creeps in from off the sea And
wakes the marsh to life, Un-til each grass blade seems to
be A thine with pas-sion life, A

PIANO

*Courtesy of 'The Outlook' Co.

Copyright, 1911, by White-Smith Music Publishing Co.
International Copyright Secured.

To Good Faming

THE VOICE OF THE DOVE



JOAQUIN MILLER

CHARLES S. BURMEAN

Allegretto scherzando

PIANO

Come list-en, O Love, to the voice of the dove, Come
hark-on and hear him say. There are

Copyright, 1915, by White-Smith Music Publishing Co.
International Copyright Secured