

Sonata In B

Opus 7, #6

Joseph Bodin de Boismortier

(1689 - 1755)

Edited by Jay Lichtmann

Trumpet I in B \flat

I. Moderement

Andante $\text{♩} = 66$

mp

4

tr

f

8

tr

mf

cresc.

f

12

mf

16

20

p

p

mf

23

tr

26

tr

f

2. Courante

Allegro ♩ = 144

f *leggero*

4

9 *tr*
mf

14 *tr*

19 *f*

24 *tr*
mp *cresc.* *f*

30 *tr*
p dolce

36 *tr*

3. Tendrement

Adagio $\text{♩} = 63$

p espressivo

4

tr

8

cresc.

12

mf

16

21

p

25

cresc.

29

tr *mf* *rit.* *tr*

4. Gigue

Vivace $\bullet = 116$

The musical score for '4. Gigue' is written in G major (one sharp) and 3/8 time. It consists of a single melodic line on a treble clef staff. The tempo is marked 'Vivace' with a metronome marking of 116. The dynamics range from *mf* (mezzo-forte) to *f* (forte). The piece features a variety of rhythmic patterns, including eighth and sixteenth notes, often beamed together. There are several instances of accents and slurs. The score is divided into measures, with measure numbers 6, 13, 25, 31, 37, 43, 49, and 56 indicated at the beginning of their respective lines. The piece concludes with a double bar line and repeat dots.

Sonata In B

Opus 7, #6

Joseph Bodin de Boismortier

(1689 - 1755)

Edited by Jay Lichtmann

Trumpet 2 in B \flat

I. Moderement

Andante $\text{♩} = 66$

1

mp

5

tr

f

8

tr

tr

mf cresc.

f

12

1

mf

17

21

mf

mf

24

tr

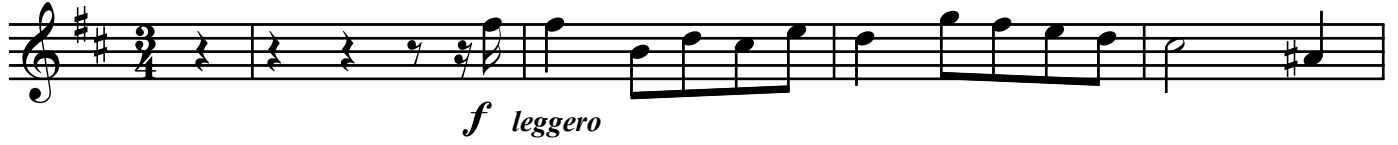
27

tr

f

2. Courante

Allegro ♩ = 144



3. Tendrement

Adagio $\text{♩} = 63$

1

p espressivo

5

cresc.

9

13

1

mf

18

p

22

26

cresc.

29

mf rit.

4. Gigue

Vivace $\bullet = 116$

1

mf

7

13

f

26

32

38

44

50

56

Sonata In B

Opus 7, #6

Joseph Bodin de Boismortier

(1689 - 1755)

Edited by Jay Lichtmann

Trumpet 3 in B \flat

I. Moderement

Andante $\text{♩} = 66$

2

mp

5

tr

f

8

mf *cresc.* *f*

12

2

mf

17

p

21

mf *p* *mf*

25

28

f

2. Courante

Allegro ♩ = 144



f *leggero*



mf



f



mp

cresc.

f



p *dolce*



4. Gigue

Vivace $\bullet = 116$

Musical score for "4. Gigue" in D major, 4/4 time. The piece begins with a 4-measure rest. The tempo is marked "Vivace" with a quarter note equal to 116 beats per minute. The score consists of nine staves of music, with measure numbers 9, 14, 25, 30, 36, 42, 48, and 57 indicated at the start of their respective staves. The dynamics range from *mf* to *f*. The piece concludes with a double bar line and repeat dots at the end of the final staff.