

THE HARMONIC CIRCLE.

A SERIES OF

Modulative Exercises

in the Principal Major & Minor Keys,

for the

HARP,

to enable the Performer to pass from one Key to another.

Dedicated to his Pupils,

BY

N. C. BOCHSA.

Ent. Sta. Hall.

Pr. 2/6

LONDON

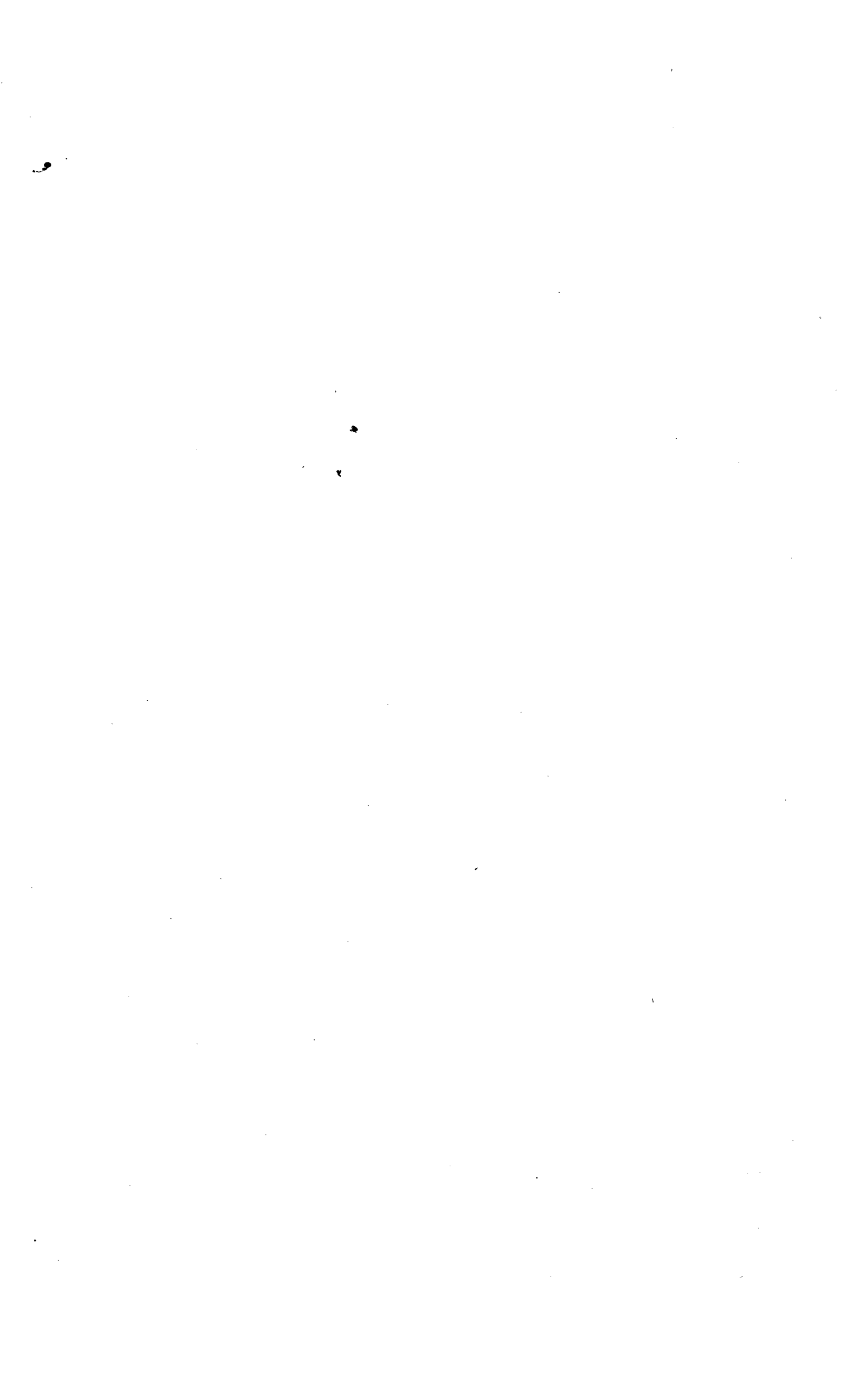
Published by BOCHSA & C^o at the Argyll Harmonic Saloon, 258, Regent St.

Where may be had

The Harpist's every day Book. 2/6

The Memory's Assistant 2/6

Printed by



MODULATIONS,

I

FROM ONE MAJOR KEY, TO ANOTHER MAJOR KEY.

From C \sharp . major, to F. major.

Vice-Versa.

Musical notation for modulation from C \sharp major to F major and vice versa. The first system shows the transition from C \sharp major to F major, and the second system shows the reverse transition from F major to C \sharp major. The notation is in treble and bass clefs, with a grand staff format.

From C \sharp . major, to B \flat . major.

Vice-Versa.

Musical notation for modulation from C \sharp major to B \flat major and vice versa. The first system shows the transition from C \sharp major to B \flat major, and the second system shows the reverse transition from B \flat major to C \sharp major. The notation is in treble and bass clefs, with a grand staff format.

From C \sharp . major, to E \flat . major.

Vice-Versa.

Musical notation for modulation from C \sharp major to E \flat major and vice versa. The first system shows the transition from C \sharp major to E \flat major, and the second system shows the reverse transition from E \flat major to C \sharp major. The notation is in treble and bass clefs, with a grand staff format.

From C \sharp . major, to A \flat . major.

Vice-Versa.

Musical notation for modulation from C \sharp major to A \flat major and vice versa. The first system shows the transition from C \sharp major to A \flat major, and the second system shows the reverse transition from A \flat major to C \sharp major. The notation is in treble and bass clefs, with a grand staff format.

From C \sharp . major, to G. major.

Vice-Versa.

Musical notation for modulation from C \sharp major to G major and vice versa. The first system shows the transition from C \sharp major to G major, and the second system shows the reverse transition from G major to C \sharp major. The notation is in treble and bass clefs, with a grand staff format.

From C \sharp . major, to D. major.

Vice-Versa.

Musical notation for modulation from C \sharp major to D major and vice versa. The first system shows the transition from C \sharp major to D major, and the second system shows the reverse transition from D major to C \sharp major. The notation is in treble and bass clefs, with a grand staff format.

From C \sharp . major, to A. major.

Vice_Versa.

Musical notation for the transition from C \sharp . major to A. major and vice versa. The first system shows the progression from C \sharp major to A major, and the second system shows the reverse progression from A major to C \sharp major. The notation is in treble and bass clefs with a common time signature.

From F. major, to B \flat . major.

Vice_Versa.

Musical notation for the transition from F. major to B \flat . major and vice versa. The first system shows the progression from F major to B \flat major, and the second system shows the reverse progression from B \flat major to F major. The notation is in treble and bass clefs with a common time signature.

From F. major, to E \flat . major.

Vice_Versa.

Musical notation for the transition from F. major to E \flat . major and vice versa. The first system shows the progression from F major to E \flat major, and the second system shows the reverse progression from E \flat major to F major. The notation is in treble and bass clefs with a common time signature.

From F. major, to A \flat . major.

Vice_Versa.

Musical notation for the transition from F. major to A \flat . major and vice versa. The first system shows the progression from F major to A \flat major, and the second system shows the reverse progression from A \flat major to F major. The notation is in treble and bass clefs with a common time signature.

From F. major, to G. major.

Vice_Versa.

Musical notation for the transition from F. major to G. major and vice versa. The first system shows the progression from F major to G major, and the second system shows the reverse progression from G major to F major. The notation is in treble and bass clefs with a common time signature.

From F. major, to D. major.

Vice_Versa.

Musical notation for the transition from F. major to D. major and vice versa. The first system shows the progression from F major to D major, and the second system shows the reverse progression from D major to F major. The notation is in treble and bass clefs with a common time signature.

From F. major, to A \sharp . major.

Vice_Versa.

Musical notation for the transition from F. major to A \sharp . major and vice versa. The first system shows the progression from F major to A \sharp major, and the second system shows the reverse progression from A \sharp major to F major. The notation is in treble and bass clefs with a common time signature.

From Bb. major, to Eb. major.

Vice-Versa.

Musical notation for the first exercise, showing a transition from Bb major to Eb major and vice versa. The notation is in treble and bass clefs, with a key signature of two flats.

From Bb. major, to Ab. major.

Vice-Versa.

Musical notation for the second exercise, showing a transition from Bb major to Ab major and vice versa. The notation is in treble and bass clefs, with a key signature of three flats.

From Bb. major, to G. major.

Vice-Versa.

Musical notation for the third exercise, showing a transition from Bb major to G major and vice versa. The notation is in treble and bass clefs, with a key signature of two flats and one sharp.

From Bb. major, to D. major.

Vice-Versa.

Musical notation for the fourth exercise, showing a transition from Bb major to D major and vice versa. The notation is in treble and bass clefs, with a key signature of two flats and two sharps.

From Bb. major, to A. major.

Vice-Versa.

Musical notation for the fifth exercise, showing a transition from Bb major to A major and vice versa. The notation is in treble and bass clefs, with a key signature of two flats and three sharps. A note in the bass clef is marked with a sharp sign and the letter 'C' in parentheses, indicating a C#.

From Eb. major, to Ab. major.

Vice-Versa.

Musical notation for the sixth exercise, showing a transition from Eb major to Ab major and vice versa. The notation is in treble and bass clefs, with a key signature of three flats.

From Eb. major, to G. major.

Vice-Versa.

Musical notation for the seventh exercise, showing a transition from Eb major to G major and vice versa. The notation is in treble and bass clefs, with a key signature of two flats and one sharp. The first note in the bass clef is marked with a forte 'f' dynamic.

From E \flat . major, to D. major.

Vice-Versa.

Musical notation for modulation from E \flat . major to D. major and vice versa. The first system shows the transition from E \flat . major (one flat) to D. major (two sharps). The second system shows the reverse transition from D. major to E \flat . major.

From G \sharp . major, to D. major.

Vice-Versa.

Musical notation for modulation from G \sharp . major to D. major and vice versa. The first system shows the transition from G \sharp . major (three sharps) to D. major (two sharps). The second system shows the reverse transition from D. major to G \sharp . major.

From G \sharp . major, to A. major.

Vice-Versa.

Musical notation for modulation from G \sharp . major to A. major and vice versa. The first system shows the transition from G \sharp . major (three sharps) to A. major (three sharps). The second system shows the reverse transition from A. major to G \sharp . major.

From D. major, to A. major.

Vice-Versa.

Musical notation for modulation from D. major to A. major and vice versa. The first system shows the transition from D. major (two sharps) to A. major (three sharps). The second system shows the reverse transition from A. major to D. major.

MODULATIONS.

FROM A MAJOR KEY, TO A MINOR KEY.

From C \sharp . major, to A. minor.

Vice-Versa.

Musical notation for modulation from C \sharp . major to A. minor and vice versa. The first system shows the transition from C \sharp . major (three sharps) to A. minor (no sharps or flats). The second system shows the reverse transition from A. minor to C \sharp . major.

From C \sharp . major, to D. minor.

Vice-Versa.

Musical notation for modulation from C \sharp . major to D. minor and vice versa. The first system shows the transition from C \sharp . major (three sharps) to D. minor (no sharps or flats). The second system shows the reverse transition from D. minor to C \sharp . major.

From C \sharp .major, to G. minor.

Vice_Versa.

Musical notation for the transition from C# major to G minor and vice versa. The first system shows the progression from C# major (C#4, E4, G4) to G minor (G3, B3, D4). The second system shows the reverse progression from G minor back to C# major.

From C \sharp .major, to C. minor.

Vice_Versa.

Musical notation for the transition from C# major to C minor and vice versa. The first system shows the progression from C# major (C#4, E4, G4) to C minor (C3, E3, G3). The second system shows the reverse progression from C minor back to C# major.

From C \sharp .major, to E. minor.

Vice_Versa.

Musical notation for the transition from C# major to E minor and vice versa. The first system shows the progression from C# major (C#4, E4, G4) to E minor (E3, G3, B3). The second system shows the reverse progression from E minor back to C# major.

From F. major, to A. minor.

Vice_Versa.

Musical notation for the transition from F major to A minor and vice versa. The first system shows the progression from F major (F4, A4, C5) to A minor (A3, C4, E4). The second system shows the reverse progression from A minor back to F major.

From F. major, to G. minor.

Vice_Versa.

Musical notation for the transition from F major to G minor and vice versa. The first system shows the progression from F major (F4, A4, C5) to G minor (G3, B3, D4). The second system shows the reverse progression from G minor back to F major.

From F. major, to C. minor.

Vice_Versa.

Musical notation for the transition from F major to C minor and vice versa. The first system shows the progression from F major (F4, A4, C5) to C minor (C3, E3, G3). The second system shows the reverse progression from C minor back to F major.

From B \flat .major, to A. minor.

Vice_Versa.

Musical notation for the transition from Bb major to A minor and vice versa. The first system shows the progression from Bb major (Bb4, D5, F5) to A minor (A3, C4, E4). The second system shows the reverse progression from A minor back to Bb major.

From Bb. major, to D. minor.

Vice_Versa.

From Bb. major, to G. minor.

Vice_Versa.

From Bb. major, to C. minor.

Vice_Versa.

From Eb. major, to A. minor.

Vice_Versa.

From Eb. major, to D. minor.

Vice_Versa.

From Eb. major, to G. minor.

Vice_Versa.

From Eb. major, to C. minor.

Vice_Versa.

MODULATIONS.

FROM ONE MINOR KEY, TO ANOTHER MINOR KEY.

From A \flat . minor, to D. minor.

Vice-Versa.

Musical notation for modulation from A-flat minor to D minor and vice versa. The first system shows the progression from A-flat minor to D minor, and the second system shows the reverse progression from D minor to A-flat minor. Both systems are written in treble and bass clefs.

From A \flat . minor, to G. minor.

Vice-Versa.

Musical notation for modulation from A-flat minor to G minor and vice versa. The first system shows the progression from A-flat minor to G minor, and the second system shows the reverse progression from G minor to A-flat minor. Both systems are written in treble and bass clefs.

From A \flat . minor, to C. minor.

Vice-Versa.

Musical notation for modulation from A-flat minor to C minor and vice versa. The first system shows the progression from A-flat minor to C minor, and the second system shows the reverse progression from C minor to A-flat minor. Both systems are written in treble and bass clefs.

From D. minor, to G. minor.

Vice-Versa.

Musical notation for modulation from D minor to G minor and vice versa. The first system shows the progression from D minor to G minor, and the second system shows the reverse progression from G minor to D minor. Both systems are written in treble and bass clefs.

From D. minor, to C. minor.

Vice-Versa.

Musical notation for modulation from D minor to C minor and vice versa. The first system shows the progression from D minor to C minor, and the second system shows the reverse progression from C minor to D minor. Both systems are written in treble and bass clefs.

From G. minor, to C. minor.

Vice-Versa.

Musical notation for modulation from G minor to C minor and vice versa. The first system shows the progression from G minor to C minor, and the second system shows the reverse progression from C minor to G minor. Both systems are written in treble and bass clefs.

