

DUO DE DOS TIPLES
DE LA OPERA **NORMA** DE BELLINI

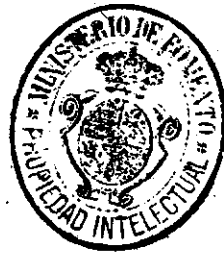
ARREGLADO

PARA GUITARRA

POR D. A. CANO

y dedicado á su discipula

D.^a ELOISA GATTEBLED.



N.º 41.

Pr. 1,50 Pts.

Allegro moderato.

MADRID.

La 6.^a en FA.

ANTONIO ROMERO: Editor.

A. R. 2335.

Calle de Preciados n.º 1. MADRID.



A page of musical notation consisting of ten staves. The notation is dense and complex, featuring many beamed notes, slurs, and dynamic markings. The first nine staves appear to be in a treble clef, while the tenth staff is in a bass clef. The music is written in a style that suggests a 19th or 20th-century composition, possibly for a piano or a similar instrument. The notation includes various rhythmic values, including eighth and sixteenth notes, and rests. There are also some markings that look like 'p' for piano and 'f' for forte. The overall appearance is that of a technical or study piece.

A musical staff in treble clef with a 5/4 time signature. It features a complex rhythmic pattern of sixteenth and thirty-second notes. A double bar line is present near the end of the staff.

Andante.

A musical staff in treble clef with a common time signature. It contains a steady rhythmic pattern of eighth and sixteenth notes.

A musical staff in treble clef with a common time signature. It features a rhythmic pattern with several triplet markings (indicated by the number '3' above the notes).

A musical staff in treble clef with a common time signature. It contains sixteenth-note runs and a 'ritenuto.' marking. The number '6' is written above some notes.

A musical staff in treble clef with a common time signature. It features a rhythmic pattern of eighth and sixteenth notes.

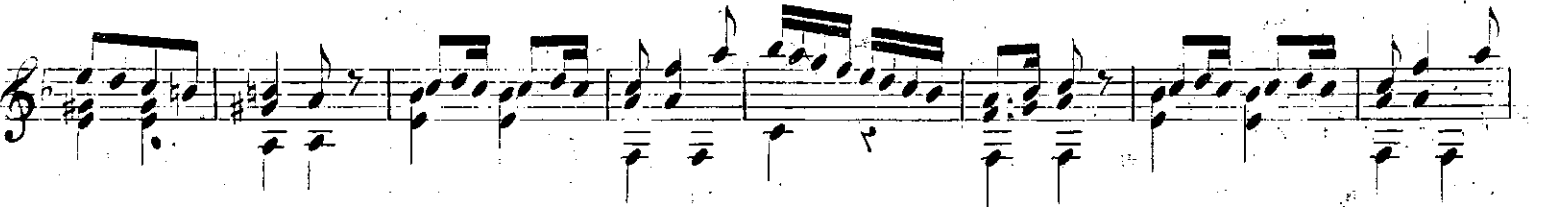
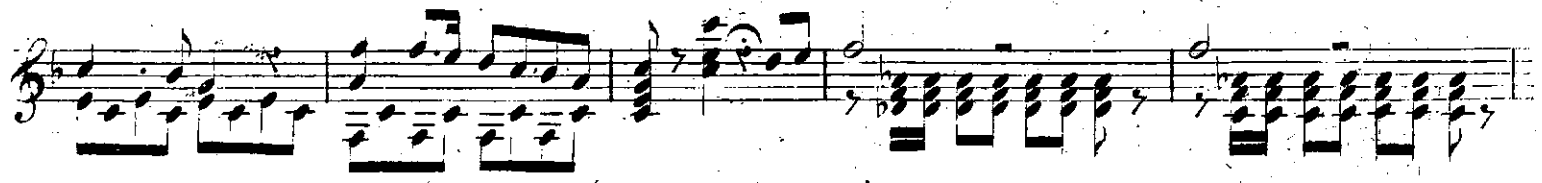
A musical staff in treble clef with a common time signature. It contains a rhythmic pattern with several triplet markings (indicated by the number '3' above the notes).

A musical staff in treble clef with a common time signature. It features a rhythmic pattern of eighth and sixteenth notes.

Allegro.

A musical staff in treble clef with a common time signature. It contains a rhythmic pattern of eighth and sixteenth notes.

A musical staff in treble clef with a common time signature. It features a rhythmic pattern of eighth and sixteenth notes.



A musical score for piano, consisting of ten staves of notation. The score is written in treble clef and features a complex, rhythmic melody with frequent sixteenth-note patterns. The notation includes various note values, rests, and dynamic markings. A 'Vivo' tempo marking is present in the seventh staff. The piece concludes with a double bar line and repeat signs.

A-R. 2335.

