

J S BACH

Suite No 1

**BWV 1007
ORIGINAL POUR VIOLONCELLE**

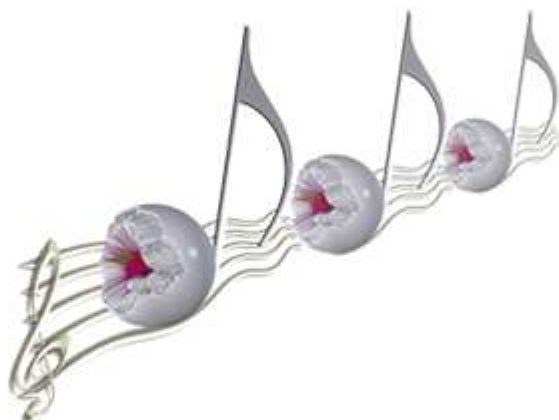
Transcription pour

BASSON

2 Versions :

Sol Majeur

Fa Majeur



TRANSCRIPTION

Pierre Montreuille

Suite N° 1

BWV 1007

JS BACH

*Transcription
Pierre Montreuille*

(Versions dans la tonalité originale)

BASSON

PRELUDE

3

5

7

9

11

13

15

17

19



21



23



25



27



29



31



33



36



38



40



ALLEMANDE

4

7

10

12

15

17

19

21

24

26

The image shows the musical score for the Allemande from Bach's Suite 1 BWV 1007. The score is written in bass clef, G major (one sharp), and common time (C). It consists of 26 measures. The notation includes various rhythmic patterns, slurs, and trills. Trills are marked with 'tr' above the notes. A repeat sign is present at measure 17. The piece concludes with a final cadence at measure 26.

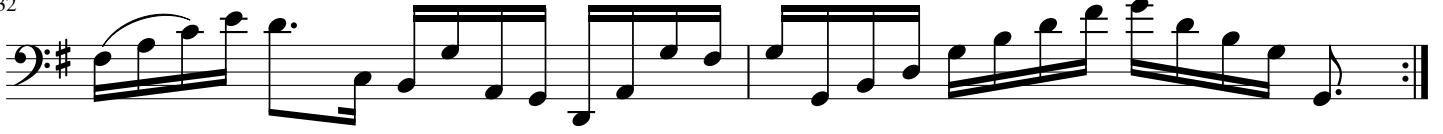
28



30



32



COURANTE



6



10



14



17



22



26



30



34



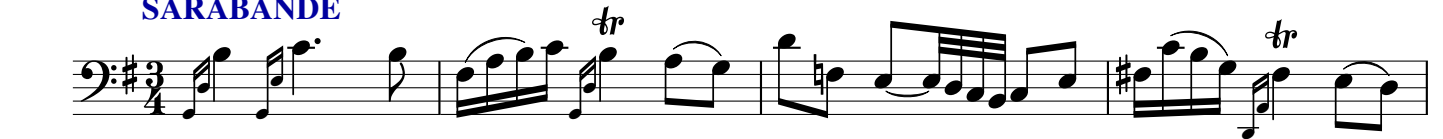
38



41



SARABANDE



5



9



13



MENUET 1



7



13



19



MENUET 2

Musical score for Menuet 2 in B-flat major, BWV 1007. The piece is in 3/4 time and consists of 19 measures. The notation is in bass clef with a key signature of two flats (B-flat major). The score is divided into four systems. The first system contains measures 1-6. The second system contains measures 7-12, with a repeat sign at the beginning of measure 7. The third system contains measures 13-18. The fourth system contains measures 19-19, ending with a double bar line and repeat dots.

MENUET 1
da capo

GIGUE

Musical score for Gigue in D major, BWV 1007. The piece is in 6/8 time and consists of 32 measures. The notation is in bass clef with a key signature of two sharps (D major). The score is divided into seven systems. The first system contains measures 1-6. The second system contains measures 7-12. The third system contains measures 13-19. The fourth system contains measures 20-25. The fifth system contains measures 26-31. The sixth system contains measures 32-32, ending with a double bar line and repeat dots. A trill (tr) is marked above the eighth measure of the first system.

Suite N° 1

BWV 1007

JS BACH

Transcription

Pierre Montreuille

(Version transposée en Fa M)

BASSON

PRELUDE

3

5

7

9

11

13

15

17

19



21



23



25



27



29



31



33



36



38



40



ALLEMANDE

4

7

10

13

15

17

20

21

24

26

The image shows a musical score for the Allemande from Bach's Suite 1 BWV 1007, written for the bass clef in 3/4 time. The score consists of ten staves of music, with measure numbers 4, 7, 10, 13, 15, 17, 20, 21, 24, and 26 indicated at the beginning of their respective staves. The key signature is one flat (B-flat). The music features a variety of rhythmic patterns, including eighth and sixteenth notes, often beamed together. Trills (tr) are marked above several notes, and a mordent (mw) is marked above a note in measure 7. The piece concludes with a double bar line and repeat dots at the end of the final staff.

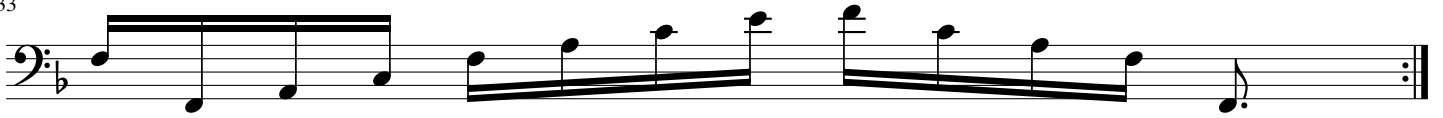
29



30



33



COURANTE



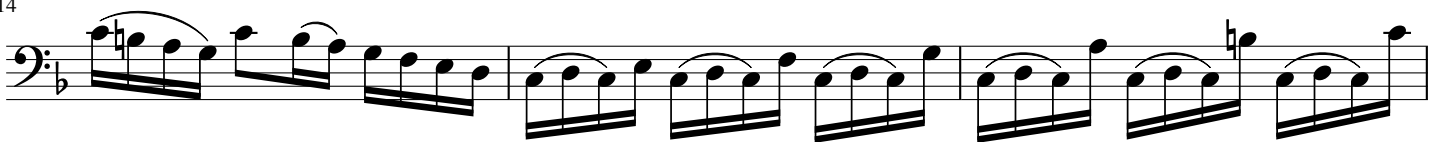
6



10



14



17



22



26



30



34



38



41



SARABANDE



5



9



13



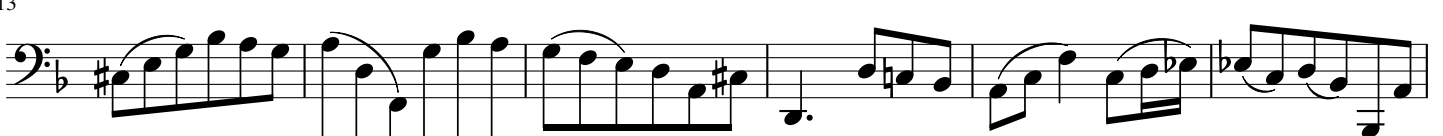
MENUET 1



7



13



19



MENUET 2

7

13

19

*MENUET 1
da capo*

GIGUE

7

13

20

26

32