

J S Bach

Gott, durch deine Güte

[Gottes Sohn ist kommen]

Choral and Choral Prelude

BWV 318 / 724

Arranged by Donald Williams

for  
Recorders  
D - Tr - T - B

Arranged and set by DFW, January 2011

Settings by JS Bach

# Gott, durch deine Güte

[Gottes Sohn ist kommen]

D-Tr-T-B

## 1 - CHORAL

harm: JS Bach  
BWV 318

(♩ = 96)

Desc  
Treble  
Tenor  
Bass

## 2 - CHORAL PRELUDE

JS Bach  
BWV 724

(♩ = 96 - 112)

14

25



System 1 (measures 25-33): This system contains the first system of music, starting at measure 25. It features four staves: a vocal line in the top staff with a treble clef and a soprano range, and three piano accompaniment staves (two treble and one bass) with a common key signature of one sharp (F#) and a common time signature. The music includes various note values, rests, and dynamic markings.

34



System 2 (measures 34-41): This system contains the second system of music, starting at measure 34. It continues the four-staff arrangement from the previous system. The vocal line and piano accompaniment staves show further development of the musical themes, with complex rhythmic patterns and melodic lines.

42



System 3 (measures 42-48): This system contains the third system of music, starting at measure 42. The four-staff structure is maintained. The music features a variety of note values and rests, with some measures containing whole notes and others with more active rhythmic figures.

49



System 4 (measures 49-56): This system contains the final system of music on the page, starting at measure 49. It concludes the piece with a final cadence in the vocal line and piano accompaniment. The system ends with a double bar line.

Settings by JS Bach

Descant

# Gott, durch deine Güte

[Gottes Sohn ist kommen]

D-Tr-T-B

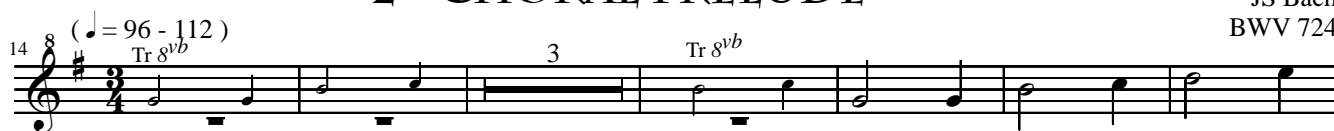
## 1 - CHORAL

harm: JS Bach  
BWV 318



## 2 - CHORAL PRELUDE

JS Bach  
BWV 724





Settings by JS Bach

Tenor

# Gott, durch deine Güte

[Gottes Sohn ist kommen]

D-Tr-T-B

## 1 - CHORAL

harm: JS Bach  
BWV 318

(♩ = 96)



## 2 - CHORAL PRELUDE

JS Bach  
BWV 724

(♩ = 96 - 112)



Settings by JS Bach

Bass

# Gott, durch deine Güte

[Gottes Sohn ist kommen]

D-Tr-T-B

(♩ = 96)

## 1 - CHORAL

harm: JS Bach  
BWV 348



## 2 - CHORAL PRELUDE

JS Bach  
BWV 724

(♩ = 96 - 112)

