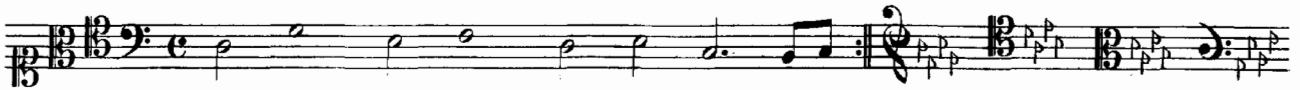


# III. CANON zu vier Stimmen.

Herrn Ludewig Friederich Hudemann gewidmet.  
Mitgetheilt von Mattheson „Der Vollkommene Capellmeister“  
(Hamburg 1739), Seite 412.

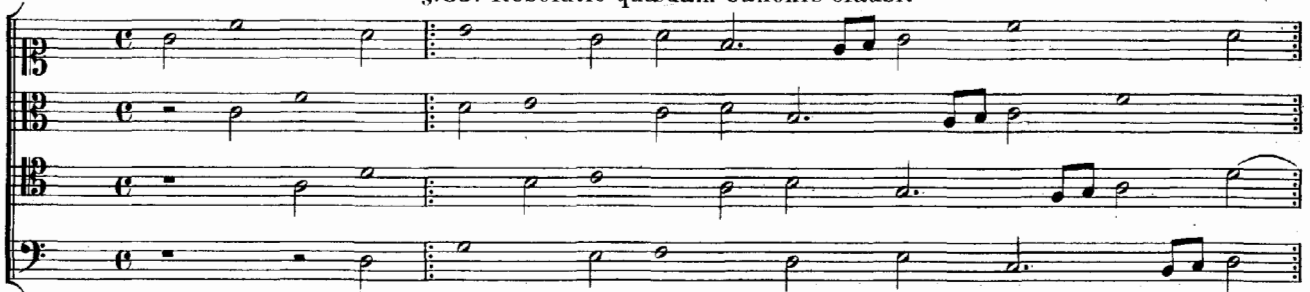
## Canon a 4.

Dédié à Monsieur Houdemann  
et composé  
par  
J. S. Bach.  
(1727.)



### Auflösungen.

A. Nach Mattheson, a. a. O. Seite 413.  
§. 53. Resolutio quædam Canonis clausi.



### al Rovescio.



### Auf zwei Zeilen zusammengezogen.



### al Rovescio.



B. Nach Lorenz Mizler „Musikalische Bibliothek“ Des dritten Bandes Dritter Theil  
(Leipzig 1747) Tab. II Fig. 3.

al roverscio.

Musical score for 'al roverscio' in B-flat major, 4/4 time. It consists of four staves of polyphonic texture. The first three staves are in soprano, alto, and tenor clefs, and the fourth is in bass clef. The music features a complex interweaving of voices with various rhythmic patterns and melodic lines.

Auf zwei Zeilen zusammengezogen.

Musical score for 'Auf zwei Zeilen zusammengezogen' in B-flat major, 4/4 time. It consists of two staves of polyphonic texture, with the upper staff in soprano clef and the lower in bass clef. The texture is more condensed than the previous version, with overlapping voices and complex rhythmic patterns.

C. Nach Marpurg „Abhandlung von der Fuge“ Zweiter Theil Tab. XXXIII Fig. 2.

Musical score for 'C. Nach Marpurg' in B-flat major, 4/4 time. It consists of four staves of polyphonic texture. The first three staves are in soprano, alto, and tenor clefs, and the fourth is in bass clef. The music features a complex interweaving of voices with various rhythmic patterns and melodic lines.

In der Umkehrung.

Musical score for 'In der Umkehrung' in B-flat major, 4/4 time. It consists of four staves of polyphonic texture. The first three staves are in soprano, alto, and tenor clefs, and the fourth is in bass clef. The music features a complex interweaving of voices with various rhythmic patterns and melodic lines.

Auf zwei Zeilen zusammengezogen.

Musical score for 'Auf zwei Zeilen zusammengezogen' in B-flat major, 4/4 time. It consists of two staves of polyphonic texture, with the upper staff in soprano clef and the lower in bass clef. The texture is more condensed than the previous version, with overlapping voices and complex rhythmic patterns.

In der Umkehrung.

Musical score for 'In der Umkehrung' in B-flat major, 4/4 time. It consists of two staves of polyphonic texture, with the upper staff in soprano clef and the lower in bass clef. The texture is more condensed than the previous version, with overlapping voices and complex rhythmic patterns.