

BWV - 1025

SUITE

1 - FANTASIA

Basado en una sonata de Sylvius Leopold Weiss:
dudoso posiblemente de C. P. E. Bach

TRANSCRIPCIÓN: LUIS ALVAREZ

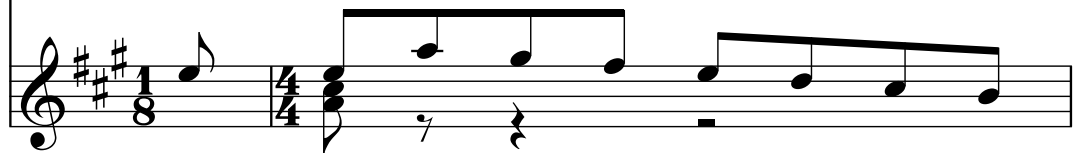
J. S. BACH
(1685-1750)

$\text{♩} = 70$

Guitarra 1

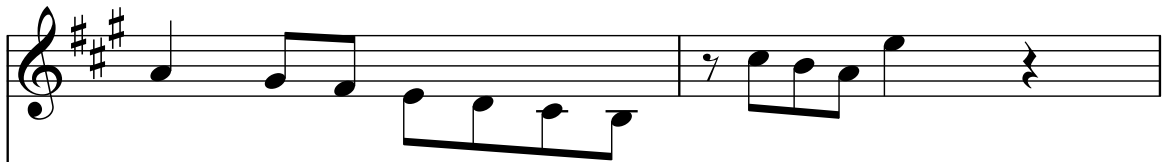


Guitarra 2

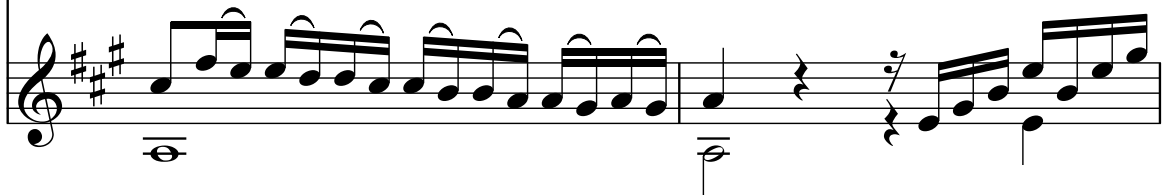


2

Guit.1



Guit.2

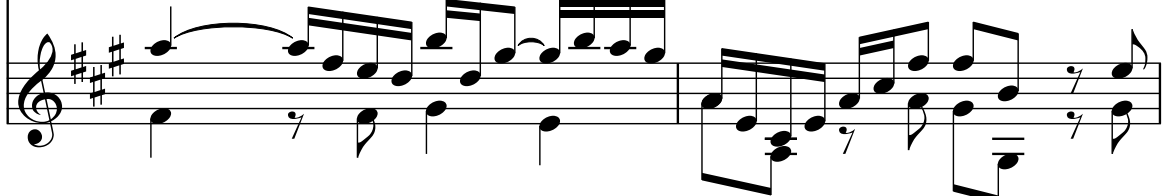


4

Guit.1



Guit.2



6

Guit.1

Guit.2

8

Guit.1

Guit.2

10

Guit.1

Guit.2

12

Guit.1

Guit.2

14

Guit.1

Guit.2

16

Guit.1

Guit.2

17

Guit.1

Guit.2

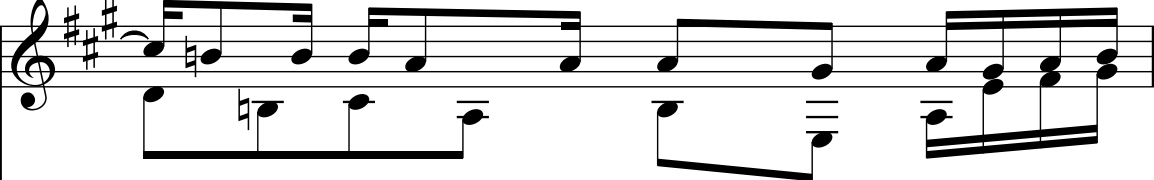
18

Guit.1

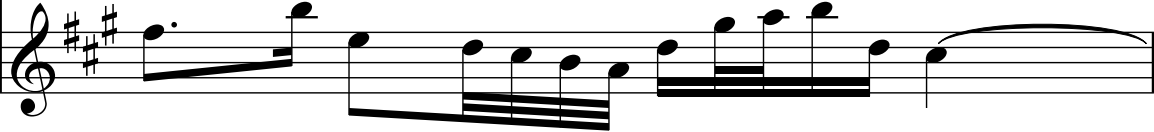
Guit.2

20

Guit.1



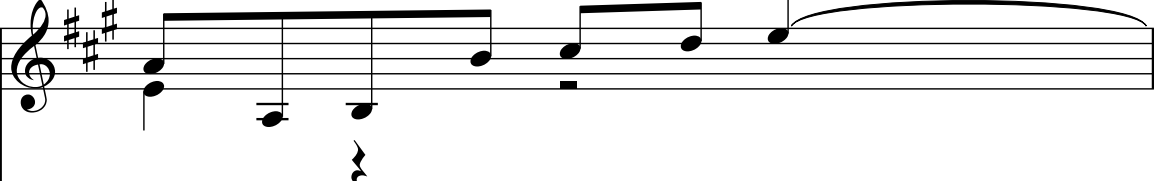
Guit.2




Two staves of music for guitar. The top staff (Guit.1) has a treble clef and a key signature of three sharps (F#, C#, G#). It contains a melodic line with eighth and sixteenth notes. The bottom staff (Guit.2) has a treble clef and the same key signature, containing a bass line with eighth and sixteenth notes.

21

Guit.1




Guit.2



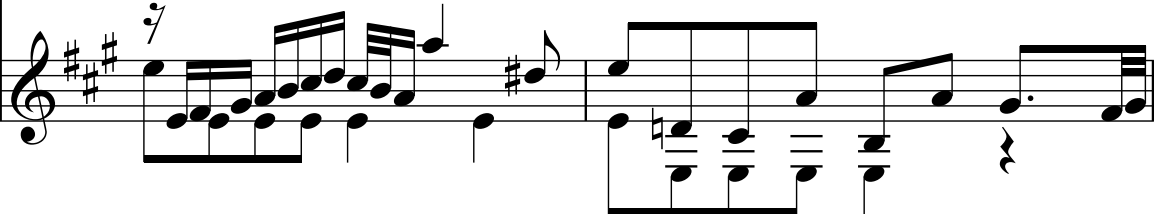
Two staves of music for guitar. The top staff (Guit.1) has a treble clef and a key signature of three sharps. It features a melodic line with a long note held over the bar line. The bottom staff (Guit.2) has a treble clef and a key signature of three sharps, containing a bass line with eighth notes.

22

Guit.1




Guit.2



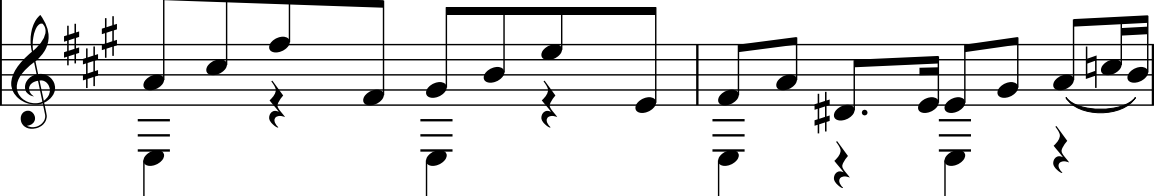
Two staves of music for guitar. The top staff (Guit.1) has a treble clef and a key signature of three sharps, featuring a complex melodic line with many sixteenth notes. The bottom staff (Guit.2) has a treble clef and a key signature of three sharps, containing a bass line with eighth notes and some rests.

24

Guit.1



Guit.2



Two staves of music for guitar. The top staff (Guit.1) has a treble clef and a key signature of three sharps, featuring a complex melodic line with many sixteenth notes. The bottom staff (Guit.2) has a treble clef and a key signature of three sharps, containing a bass line with eighth notes and some rests.

26

Guit.1

Guit.2

Detailed description: This system contains measures 26 and 27. Guit.1 (top staff) plays a continuous eighth-note melody in treble clef with a key signature of three sharps (F#, C#, G#). Guit.2 (bottom staff) provides a bass line with a mix of eighth and quarter notes, including rests and slurs. The key signature is consistent throughout.

28

Guit.1

Guit.2

Detailed description: This system contains measures 28 and 29. Guit.1 continues the eighth-note melody. Guit.2 features a more active bass line with eighth-note patterns and some slurs. The key signature remains three sharps.

30

Guit.1

Guit.2

Detailed description: This system contains measures 30 and 31. Guit.1's melody continues. Guit.2's bass line consists of eighth-note patterns with frequent rests, creating a rhythmic accompaniment. The key signature is three sharps.

32

Guit.1

Guit.2

Detailed description: This system contains measures 32 and 33. Guit.1's melody continues. Guit.2's bass line features eighth-note patterns with rests. The key signature is three sharps.

34

Guit.1

Guit.2

36

Guit.1

Guit.2

38

Guit.1

Guit.2

40

Guit.1

Guit.2

42

Guit.1

Guit.2

44

Guit.1

Guit.2

46

Guit.1

Guit.2

47

Guit.1

Guit.2