

BWV 1010

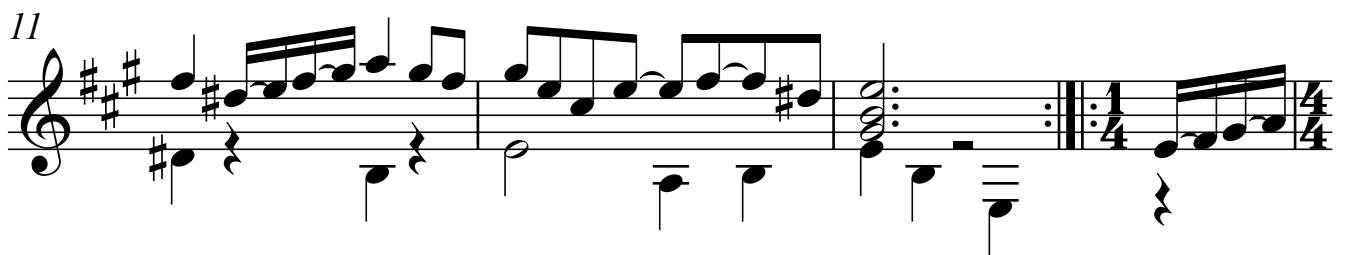
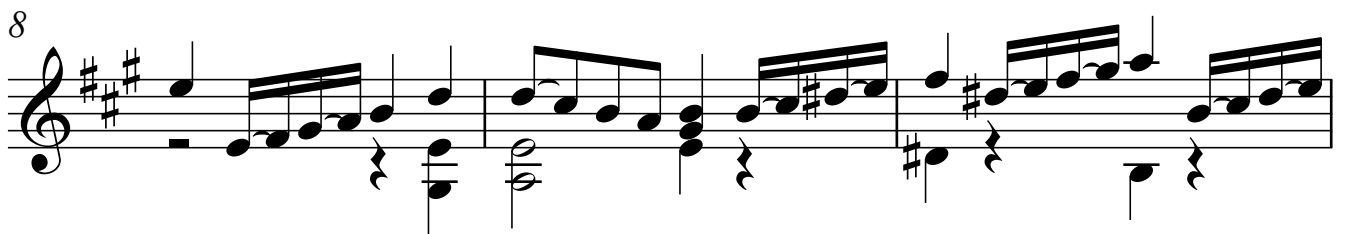
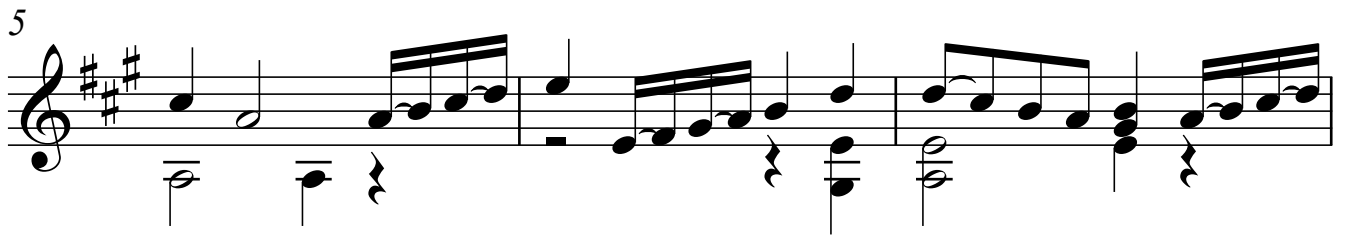
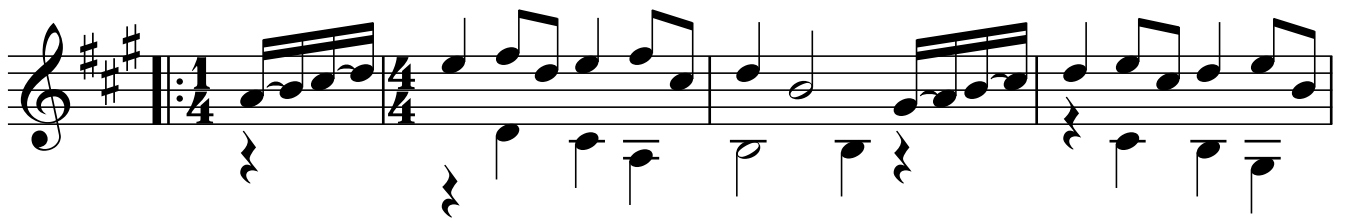
CELLO SUITE N°4

5.- Bourre 1

ARMONIZADA POR LUIS ALVAREZ

J.S. BACH

♩ = 140



2 15

18

20

22

25

28

30

Detailed description: This image shows a page of musical notation for the Bourrée from the Cello Suite No. 4 by J.S. Bach. The score is written for a single staff in treble clef, with a key signature of three sharps (F#, C#, G#) and a 4/4 time signature. The music is divided into seven systems, each starting with a measure number: 15, 18, 20, 22, 25, 28, and 30. The notation includes a variety of rhythmic patterns, such as eighth and sixteenth notes, and rests. The piece is in a minor mode, as indicated by the key signature.

33

35

37

40

43

46

48