

# BWV - 990

## 16 SARABANDA CON PARTITA

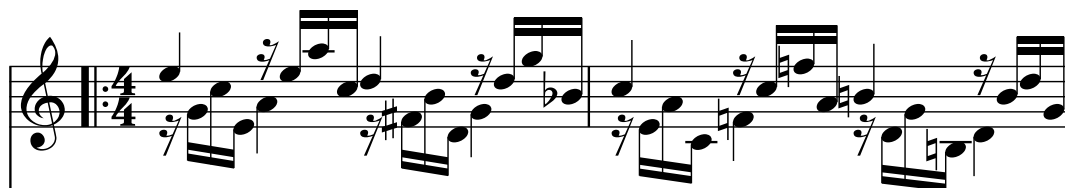
### NÚMERO 15

TRANSCRIPCIÓN: LUIS ALVAREZ

J. S. BACH  
(1685-1750)

♩=80

Guitarra 1



♩=80

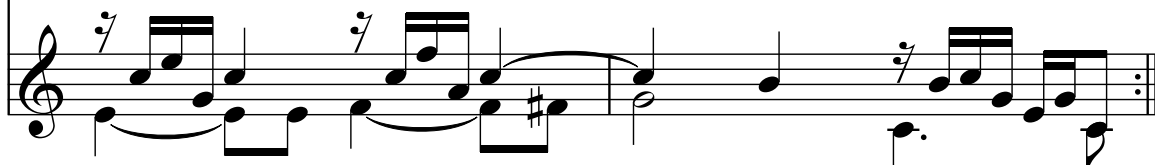
Guitarra 2



Guit.1



Guit.2



5

**Guit.1**

**Guit.2**

Musical notation for measures 5 and 6. Guit.1 (top staff) features a melodic line with eighth and sixteenth notes, including a trill in measure 6. Guit.2 (bottom staff) provides a rhythmic accompaniment with eighth notes and chords.

7

**Guit.1**

**Guit.2**

Musical notation for measures 7 and 8. Guit.1 (top staff) continues the melodic line with some rests. Guit.2 (bottom staff) maintains the accompaniment pattern.

9

**Guit.1**

**Guit.2**

Musical notation for measures 9 and 10. Guit.1 (top staff) has a more active melodic line. Guit.2 (bottom staff) features a more melodic accompaniment with longer note values.

11

**Guit.1**

**Guit.2**

Musical notation for measures 11 and 12. Guit.1 (top staff) concludes the piece with a final melodic phrase. Guit.2 (bottom staff) provides a final accompaniment phrase.