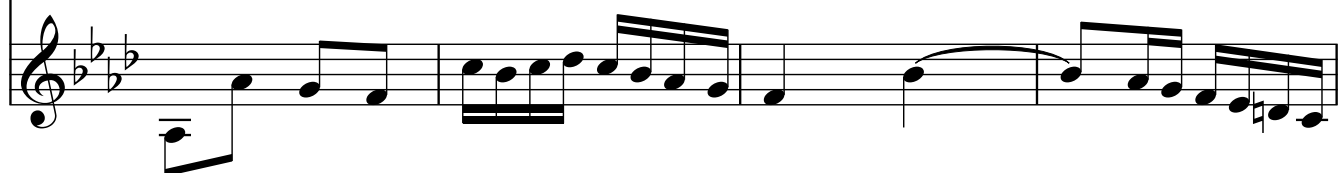
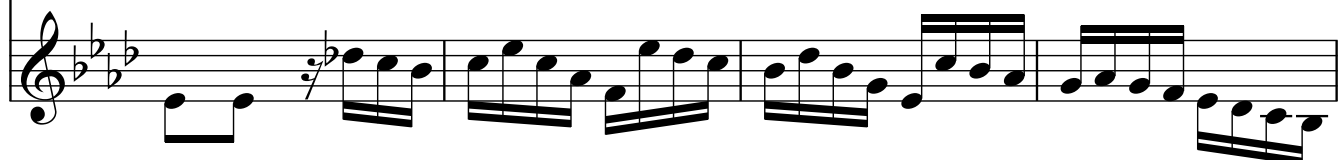
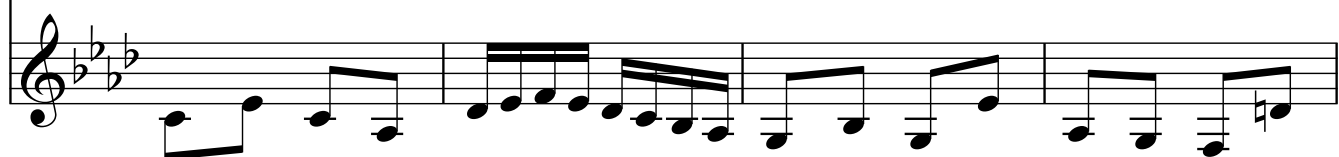
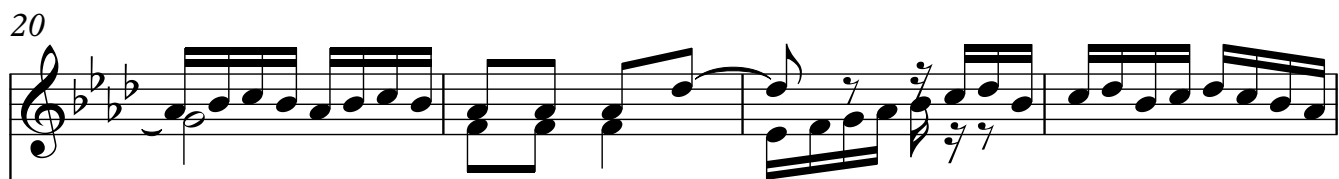
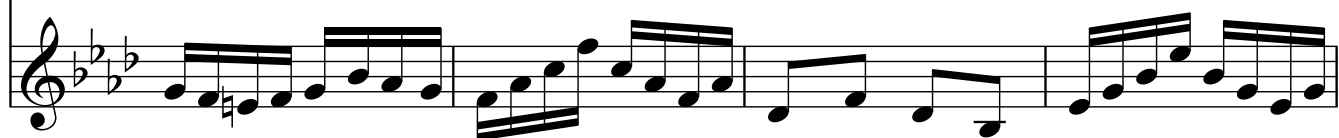
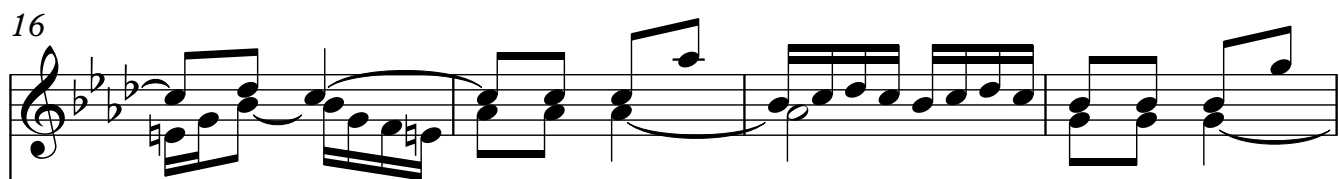
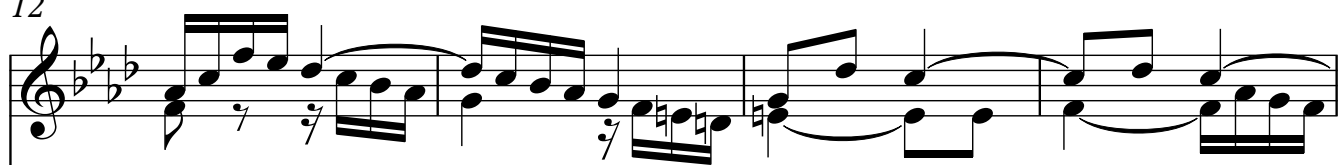




2 12



32

36

40

44

48

52

Two staves of musical notation for measures 52-55. The music is in G minor (three flats) and 3/4 time. The upper staff features a complex melodic line with many sixteenth and thirty-second notes, including some accidentals. The lower staff provides a harmonic accompaniment with chords and moving lines. Measure 55 ends with a fermata over a whole note.

56

Two staves of musical notation for measures 56-59. The upper staff continues the intricate melodic development with slurs and ties. The lower staff maintains the harmonic support. Measure 59 concludes with a fermata over a whole note.

60

Two staves of musical notation for measures 60-63. The upper staff shows a melodic line with a '5' fingering indicated above a note. The lower staff continues the accompaniment. Measure 63 ends with a fermata over a whole note.

64

Two staves of musical notation for measures 64-67. The upper staff features a melodic line with a '7' fingering indicated above a note. The lower staff provides the accompaniment. Measure 67 ends with a fermata over a whole note.

68

Two staves of musical notation for measures 68-71. The upper staff continues the melodic line with a '7' fingering. The lower staff provides the accompaniment. Measure 71 ends with a fermata over a whole note.

72

75

78

82