

# BWV - 866

## EL CLAVECIN BIEN TEMPERADO

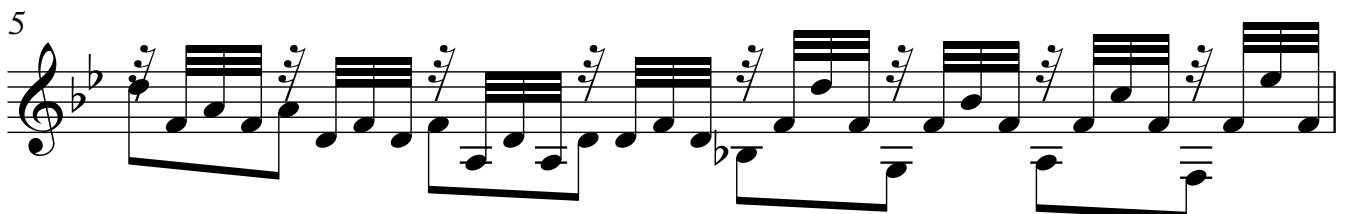
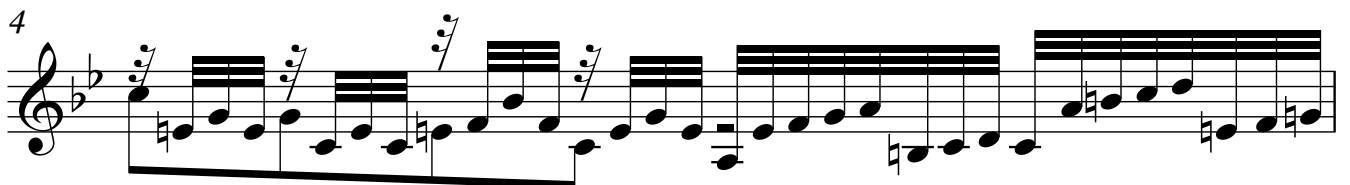
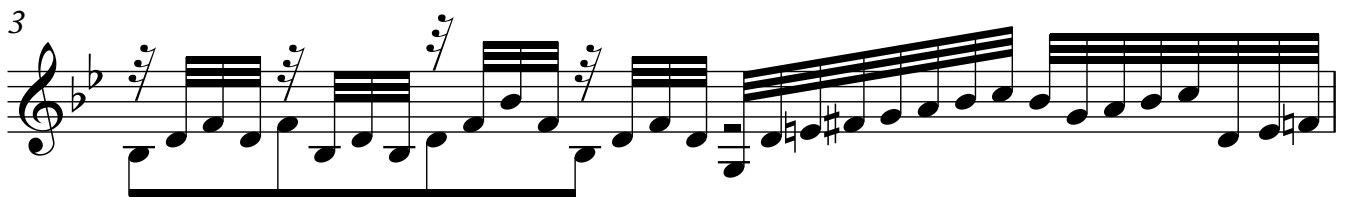
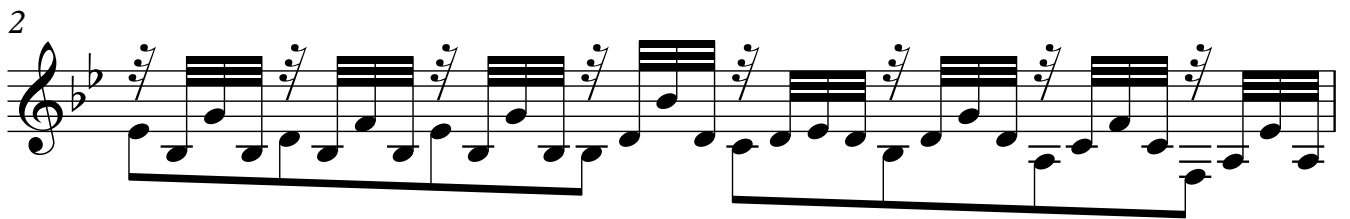
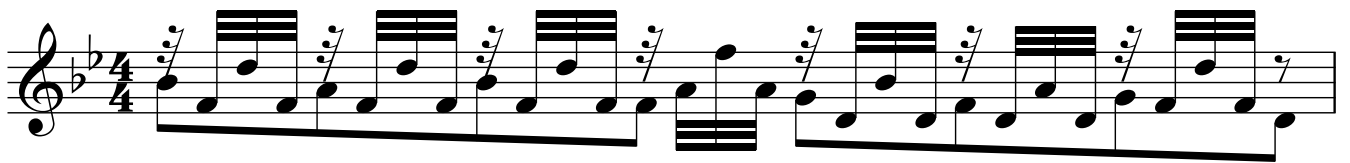
### 1.-PRELUDIO

ARMONIZADO POR LUIS ALVAREZ

J. S. BACH

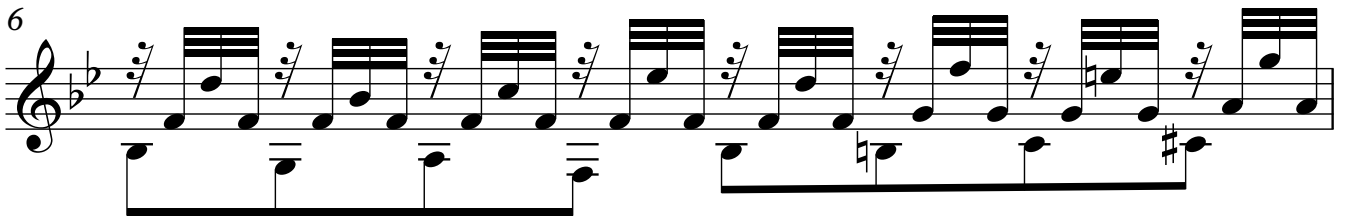
**Vivace**

♩ = 60

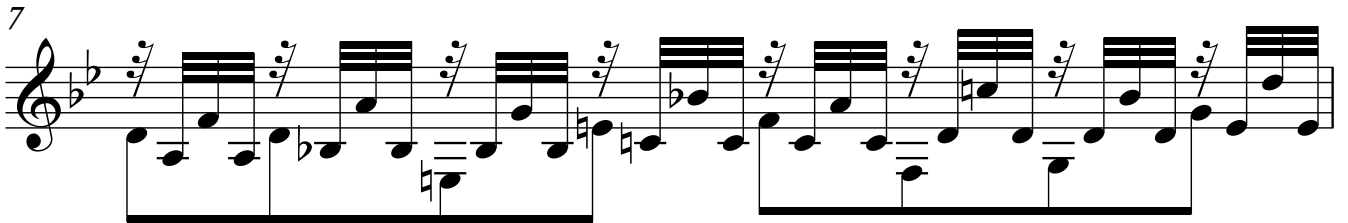


2

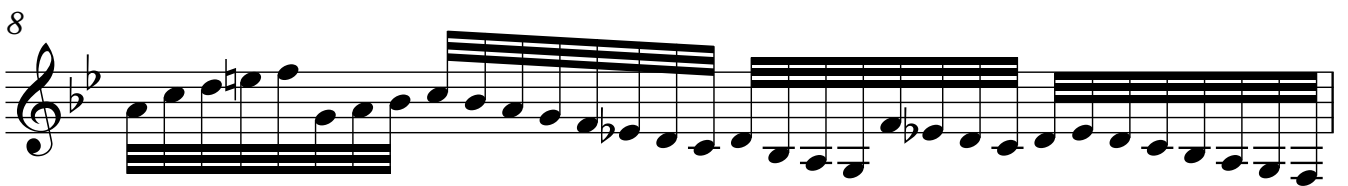
6




7



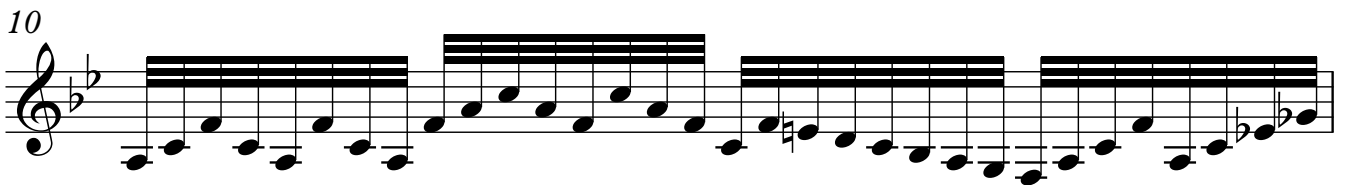
8



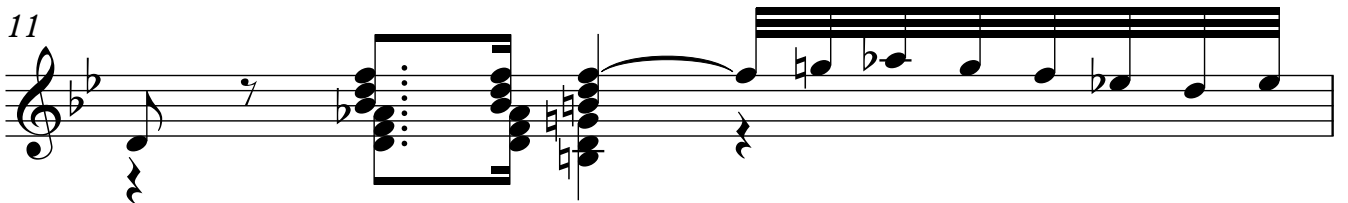
9



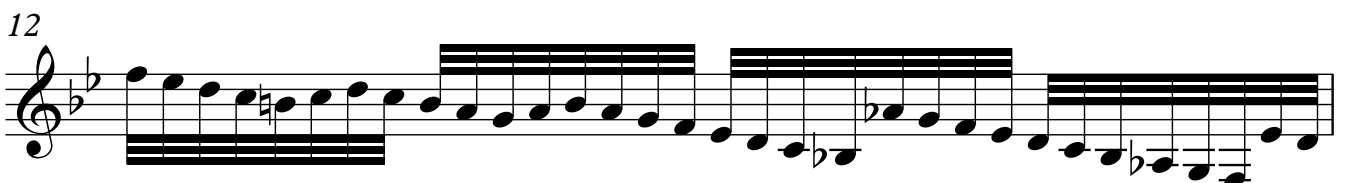
10




11



12

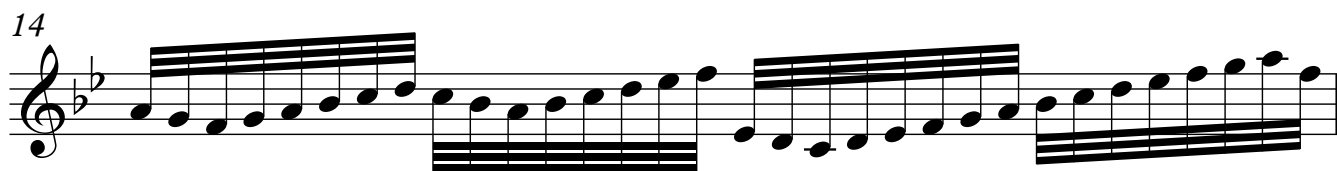


13



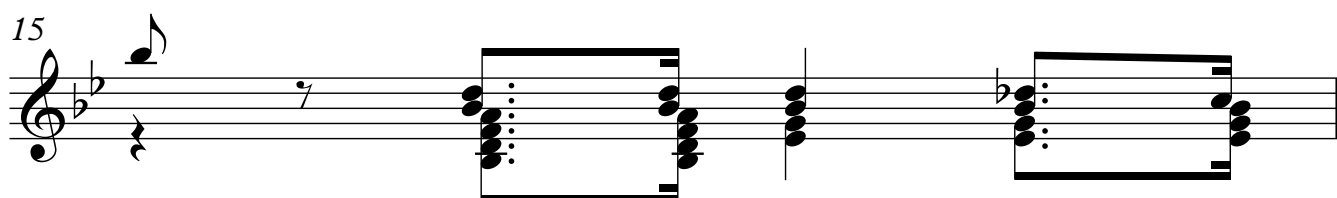
Musical notation for measure 13, featuring a treble clef, a key signature of two flats (B-flat and E-flat), and a common time signature. The measure begins with a quarter rest, followed by a dotted quarter note G4. A bracketed section contains a half note chord of F4 and C5. The measure concludes with a half note G4.

14



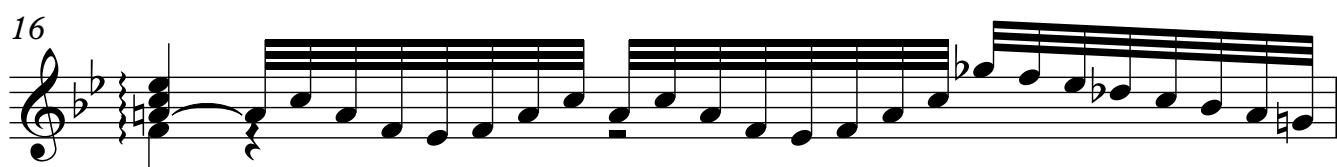
Musical notation for measure 14, featuring a treble clef, a key signature of two flats, and a common time signature. The measure contains a half note chord of F4 and C5, followed by a half note G4. A bracketed section contains a half note chord of F4 and C5. The measure concludes with a half note G4.

15



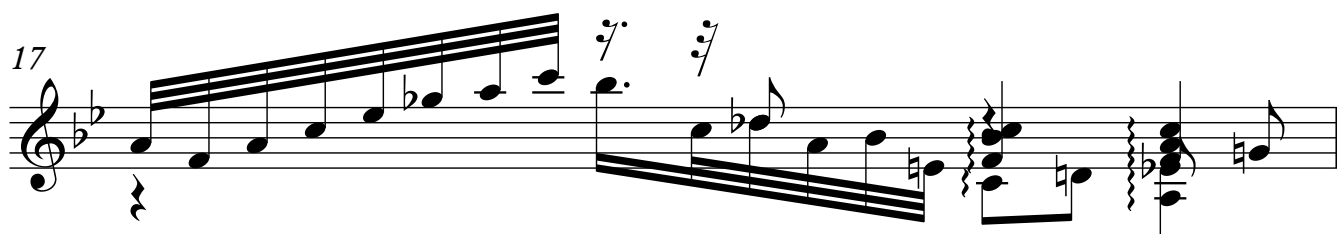
Musical notation for measure 15, featuring a treble clef, a key signature of two flats, and a common time signature. The measure begins with a quarter rest, followed by a dotted quarter note G4. A bracketed section contains a half note chord of F4 and C5. The measure concludes with a half note G4.

16



Musical notation for measure 16, featuring a treble clef, a key signature of two flats, and a common time signature. The measure begins with a quarter rest, followed by a dotted quarter note G4. A bracketed section contains a half note chord of F4 and C5. The measure concludes with a half note G4.

17



Musical notation for measure 17, featuring a treble clef, a key signature of two flats, and a common time signature. The measure begins with a quarter rest, followed by a dotted quarter note G4. A bracketed section contains a half note chord of F4 and C5. The measure concludes with a half note G4.

18



Musical notation for measure 18, featuring a treble clef, a key signature of two flats, and a common time signature. The measure begins with a quarter rest, followed by a dotted quarter note G4. A bracketed section contains a half note chord of F4 and C5. The measure concludes with a half note G4.

19



Musical notation for measure 19, featuring a treble clef, a key signature of two flats, and a common time signature. The measure begins with a quarter rest, followed by a dotted quarter note G4. A bracketed section contains a half note chord of F4 and C5. The measure concludes with a half note G4.

20



Musical notation for measure 20, featuring a treble clef, a key signature of two flats, and a common time signature. The measure begins with a quarter rest, followed by a dotted quarter note G4. A bracketed section contains a half note chord of F4 and C5. The measure concludes with a half note G4.