

BWV - 658

PRELUDIO

NO QUIERO DEJAR IR A DIOS

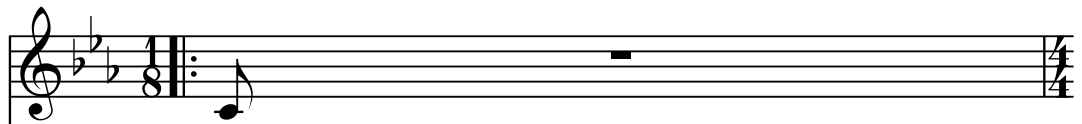
TRANSCRIPCIÓN: LUIS ALVAREZ

J. S. BACH

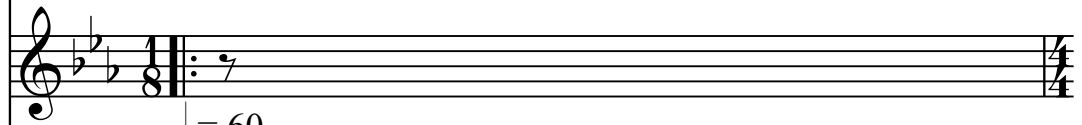
(1685-1750)

♩ = 60

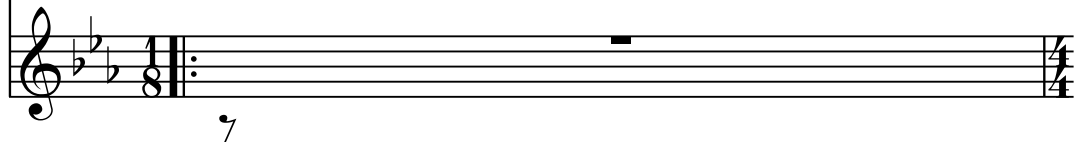
Guitarra 1



Guitarra 2



Guitarra 3



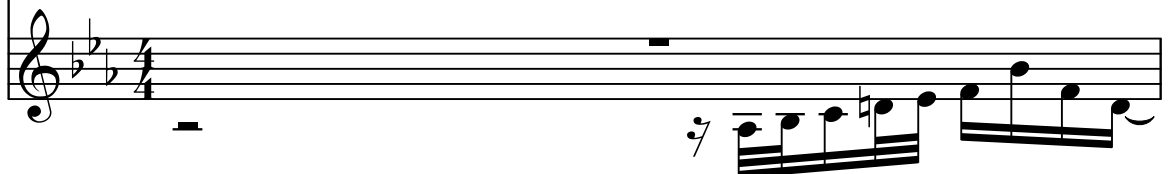
Guit.1



Guit.2



Guit.3



3

Guit.1

Guit.2

Guit.3

System 1: Measures 3-5. Guit.1: Treble clef, key signature of three flats. Measure 3: quarter note G4, eighth notes A4, Bb4, C5, quarter note D5. Measure 4: quarter note E5, quarter note F5, quarter note G5, quarter note A5. Measure 5: quarter note B5, quarter note C6, quarter note D6, quarter note E6. Guit.2: Treble clef. Measure 3: quarter rest, quarter note G4, quarter note A4, quarter note Bb4. Measure 4: quarter note C5, quarter note D5, quarter note E5, quarter note F5. Measure 5: quarter note G5, quarter note A5, quarter note B5, quarter note C6. Guit.3: Treble clef. Measure 3: quarter note G4, quarter note A4, quarter note Bb4. Measure 4: quarter note C5, quarter note D5, quarter note E5, quarter note F5. Measure 5: quarter note G5, quarter note A5, quarter note B5, quarter note C6.

4

Guit.1

Guit.2

Guit.3

System 2: Measures 6-8. Guit.1: Treble clef. Measure 6: quarter note G4, quarter note A4, quarter note Bb4. Measure 7: quarter note C5, quarter note D5, quarter note E5, quarter note F5. Measure 8: quarter note G5, quarter note A5, quarter note B5, quarter note C6. Guit.2: Treble clef. Measure 6: quarter note G4, quarter note A4, quarter note Bb4. Measure 7: quarter note C5, quarter note D5, quarter note E5, quarter note F5. Measure 8: quarter note G5, quarter note A5, quarter note B5, quarter note C6. Guit.3: Treble clef. Measure 6: quarter note G4, quarter note A4, quarter note Bb4. Measure 7: quarter note C5, quarter note D5, quarter note E5, quarter note F5. Measure 8: quarter note G5, quarter note A5, quarter note B5, quarter note C6.

5

Guit.1

Guit.2

Guit.3

System 3: Measures 9-11. Guit.1: Treble clef. Measure 9: quarter note G4, quarter note A4, quarter note Bb4. Measure 10: quarter note C5, quarter note D5, quarter note E5, quarter note F5. Measure 11: quarter note G5, quarter note A5, quarter note B5, quarter note C6. Guit.2: Treble clef. Measure 9: quarter note G4, quarter note A4, quarter note Bb4. Measure 10: quarter note C5, quarter note D5, quarter note E5, quarter note F5. Measure 11: quarter note G5, quarter note A5, quarter note B5, quarter note C6. Guit.3: Treble clef. Measure 9: quarter note G4, quarter note A4, quarter note Bb4. Measure 10: quarter note C5, quarter note D5, quarter note E5, quarter note F5. Measure 11: quarter note G5, quarter note A5, quarter note B5, quarter note C6.

6

Guit.1

Guit.2

Guit.3

This system contains measures 6, 7, and 8 of the piece. It features three guitar staves. Measure 6 shows Guit.1 with a complex melodic line and Guit.2 with a rhythmic accompaniment. Measure 7 continues the melodic development in Guit.1 and Guit.2. Measure 8 features a more active melodic line in Guit.1 and a steady accompaniment in Guit.2 and Guit.3.

7

Guit.1

Guit.2

Guit.3

This system contains measures 7 and 8. Measure 7 shows Guit.1 with a melodic line and Guit.2 with a long note followed by a melodic phrase. Measure 8 continues the melodic line in Guit.1 and the accompaniment in Guit.2 and Guit.3.

8

Guit.1

Guit.2

Guit.3

This system contains measures 8 and 9. Measure 8 shows Guit.1 with a melodic line and Guit.2 with a rhythmic accompaniment. Measure 9 continues the melodic development in Guit.1 and the accompaniment in Guit.2 and Guit.3.

9

Guit.1

Guit.2

Guit.3

This system contains measures 9 and 10. Measure 9 starts with a treble clef, a key signature of three flats (B-flat, E-flat, A-flat), and a common time signature. Guit.1 has a quarter rest, followed by a quarter note G4, and then a sixteenth-note triplet of G4, A4, Bb4. Guit.2 has a quarter rest, followed by a quarter note G4, and then a sixteenth-note triplet of G4, A4, Bb4. Guit.3 has a quarter note G4, followed by a quarter note F4, and then a sixteenth-note triplet of G4, A4, Bb4. Measure 10 continues with similar patterns, including a sixteenth-note triplet of G4, A4, Bb4 in Guit.1 and Guit.2.

10

Guit.1

Guit.2

Guit.3

This system contains measures 10 and 11. Measure 10 continues from the previous system. Guit.1 has a sixteenth-note triplet of G4, A4, Bb4, followed by a quarter note G4. Guit.2 has a sixteenth-note triplet of G4, A4, Bb4, followed by a quarter note G4. Guit.3 has a quarter note G4, followed by a quarter note F4, and then a sixteenth-note triplet of G4, A4, Bb4. Measure 11 continues with similar patterns, including a sixteenth-note triplet of G4, A4, Bb4 in Guit.1 and Guit.2.

11

Guit.1


Guit.2

Guit.3

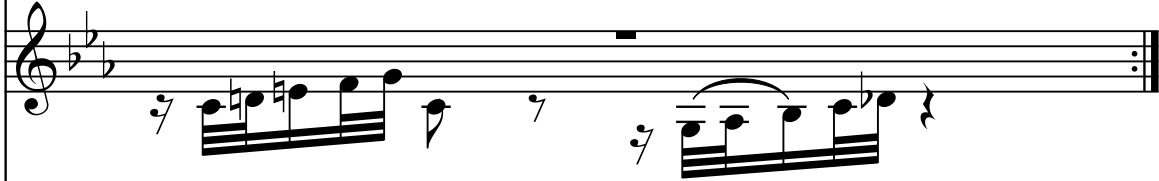
This system contains measures 11 and 12. Measure 11 continues from the previous system. Guit.1 has a sixteenth-note triplet of G4, A4, Bb4, followed by a quarter note G4. Guit.2 has a quarter rest, followed by a quarter note G4, and then a sixteenth-note triplet of G4, A4, Bb4. Guit.3 has a quarter note G4, followed by a quarter note F4, and then a sixteenth-note triplet of G4, A4, Bb4. Measure 12 continues with similar patterns, including a sixteenth-note triplet of G4, A4, Bb4 in Guit.1 and Guit.2.

12


Guit.1



Guit.2




Guit.3



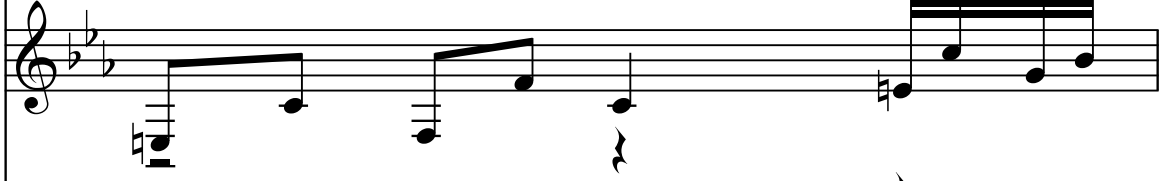
Musical notation for measures 12-13, featuring three guitar parts (Guit.1, Guit.2, Guit.3) in treble clef with a key signature of two flats. Measure 12 shows Guit.1 with a melodic line and Guit.2 with a rhythmic accompaniment. Measure 13 continues the progression with Guit.1 and Guit.2 playing similar parts to measure 12, while Guit.3 provides a bass line.

13


Guit.1



Guit.2



Guit.3



Musical notation for measures 13-14, featuring three guitar parts (Guit.1, Guit.2, Guit.3) in treble clef with a key signature of two flats. Measure 13 shows Guit.1 and Guit.2 with melodic lines and Guit.3 with a bass line. Measure 14 continues the progression with Guit.1 and Guit.2 playing similar parts to measure 13, while Guit.3 provides a bass line.

14

Guit.1



Guit.2



Guit.3



Musical notation for measures 14-15, featuring three guitar parts (Guit.1, Guit.2, Guit.3) in treble clef with a key signature of two flats. Measure 14 shows Guit.1 with a melodic line and Guit.2 with a rhythmic accompaniment. Measure 15 continues the progression with Guit.1 and Guit.2 playing similar parts to measure 14, while Guit.3 provides a bass line.

15

Guit.1

Guit.2

Guit.3

This system contains measures 15 and 16. Measure 15 features Guit.1 with a melodic line of eighth notes, Guit.2 with a rhythmic accompaniment of eighth notes, and Guit.3 with a single bass note. Measure 16 continues the melodic and rhythmic patterns across the three guitars.

16

Guit.1

Guit.2

Guit.3

This system contains measures 17 and 18. Measure 17 shows Guit.1 with a melodic line, Guit.2 with a rhythmic accompaniment, and Guit.3 with a single bass note. Measure 18 continues the melodic and rhythmic patterns across the three guitars.

17

Guit.1

Guit.2

Guit.3

This system contains measures 19 and 20. Measure 19 features Guit.1 with a melodic line, Guit.2 with a rhythmic accompaniment, and Guit.3 with a single bass note. Measure 20 continues the melodic and rhythmic patterns across the three guitars.

18

Guit.1

Guit.2

Guit.3

19

Guit.1

Guit.2

Guit.3

20

Guit.1

Guit.2

Guit.3

21

Guit.1

Guit.2

Guit.3




Musical notation for Guit.1 in measures 21-22. The staff shows a melodic line with a 7/8 time signature. It begins with a quarter note, followed by a half note, and then a series of eighth notes with slurs and ties.

22

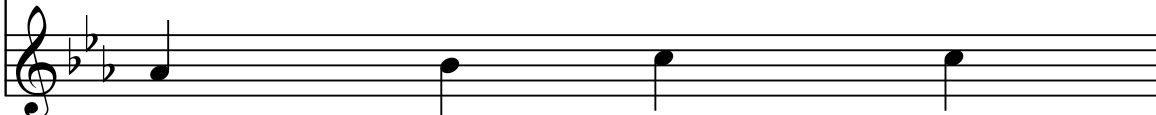
Guit.1

Guit.2

Guit.3



Musical notation for Guit.2 in measures 21-22. The staff shows a rhythmic accompaniment with a 7/8 time signature, featuring eighth notes and chords.



Musical notation for Guit.3 in measures 21-22. The staff shows a simple bass line with quarter notes and rests.

23

Guit.1

Guit.2

Guit.3



Musical notation for Guit.1 in measures 23-24. The staff shows a melodic line with a 7/8 time signature, featuring eighth notes and slurs.



Musical notation for Guit.2 in measures 23-24. The staff shows a rhythmic accompaniment with a 7/8 time signature, featuring eighth notes and chords.



Musical notation for Guit.3 in measures 23-24. The staff shows a bass line with quarter notes and eighth notes.

Guit.1

Guit.2

Guit.3

Guit.1

Guit.2

Guit.3

Guit.1

Guit.2

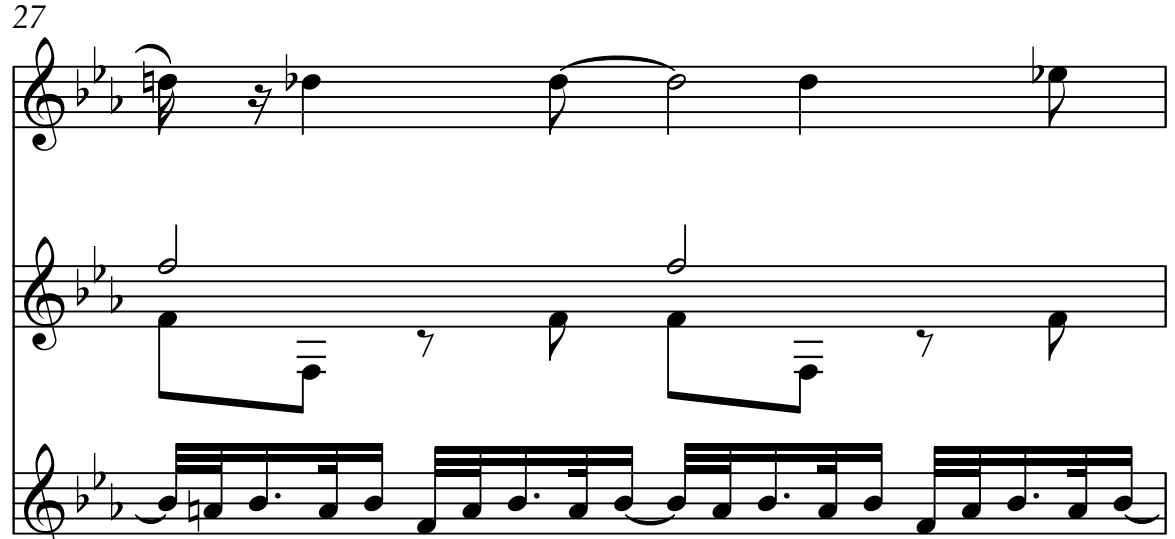
Guit.3

27

Guit.1

Guit.2

Guit.3

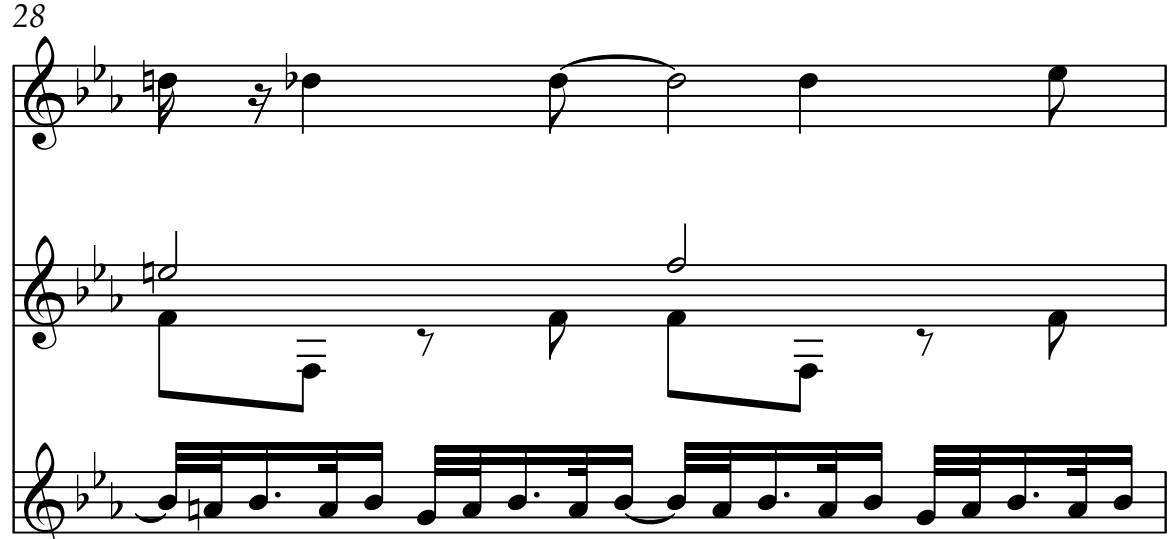


28

Guit.1

Guit.2

Guit.3



29

Guit.1

Guit.2

Guit.3

