

BWV - 543

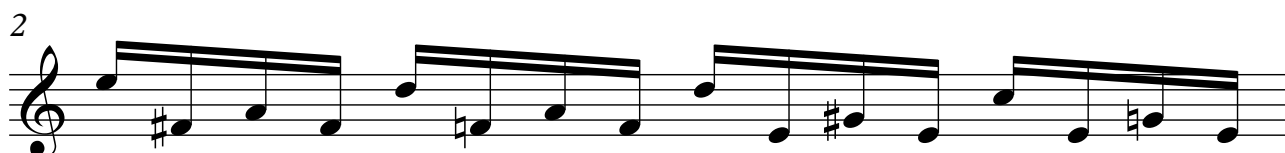
PRELUDIO Y FUGA

1 - PRELUDIO

TRANSCRIPCIÓN: LUIS ALVAREZ

J. S. BACH
(1685-1750)

$\text{♩} = 80$



2

5

5

6

6

7

7

8

8

9

9

10

10

11

11

12

13

14

15

16

17

18

4

19

20

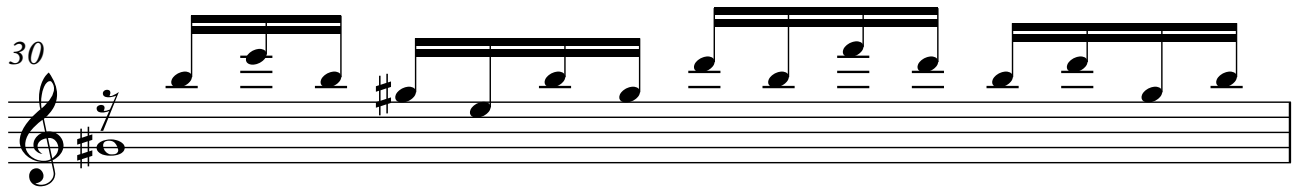
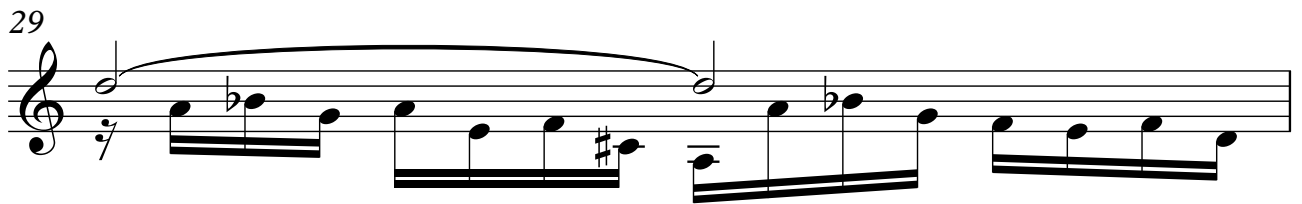
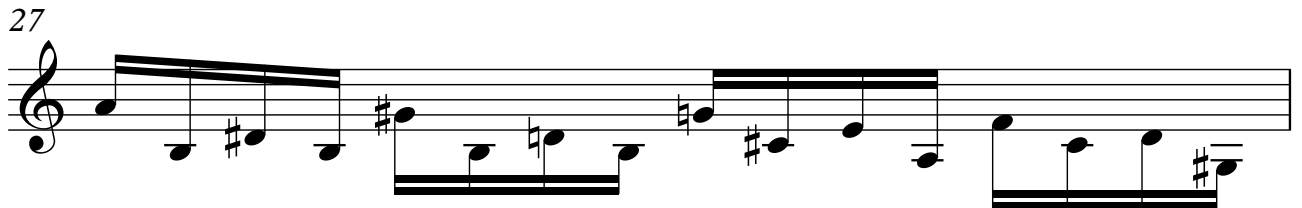
21

22

23

24

25

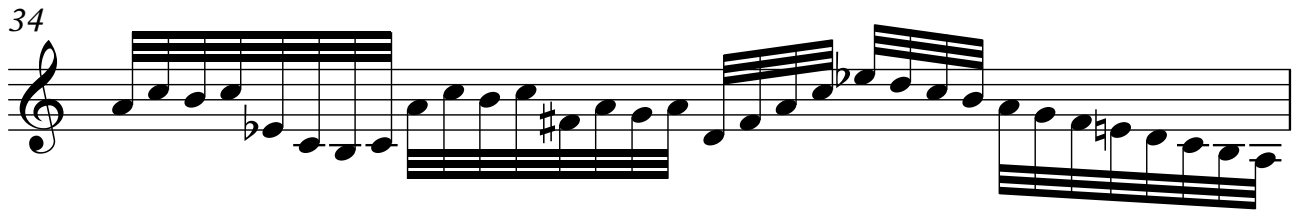


33



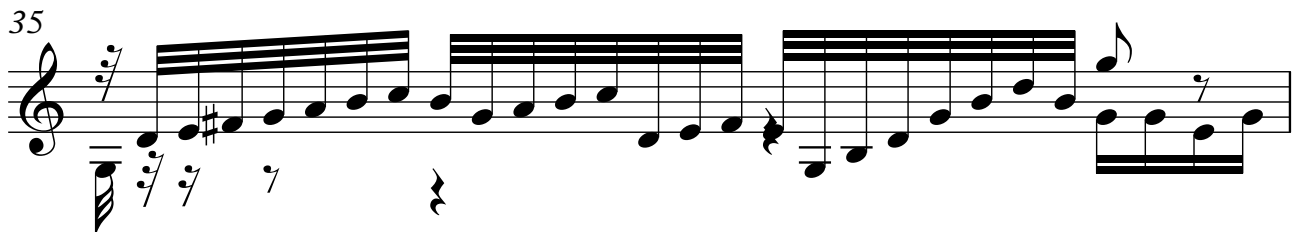
Musical notation for measure 33, featuring a treble clef, a key signature of one sharp (F#), and a 7/8 time signature. The melody consists of eighth and sixteenth notes, with a fermata over the final note. The bass line features a complex rhythmic pattern with sixteenth notes and rests.

34




Musical notation for measure 34, featuring a treble clef, a key signature of one sharp (F#), and a 7/8 time signature. The melody continues with eighth and sixteenth notes, and the bass line maintains its complex rhythmic pattern.

35



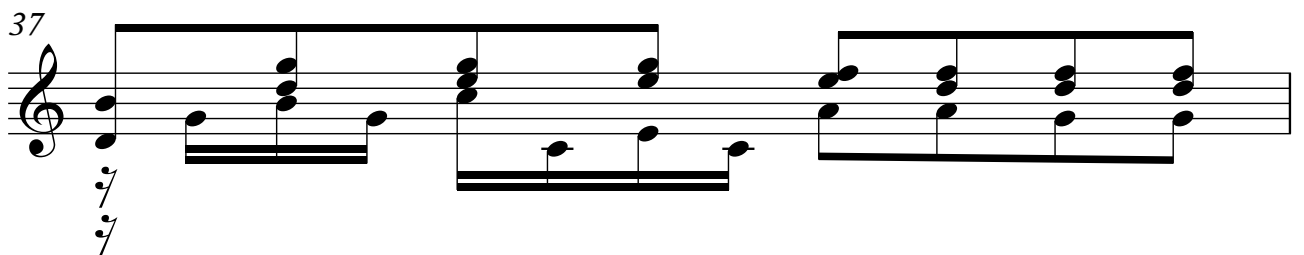
Musical notation for measure 35, featuring a treble clef, a key signature of one sharp (F#), and a 7/8 time signature. The melody continues with eighth and sixteenth notes, and the bass line maintains its complex rhythmic pattern.

36



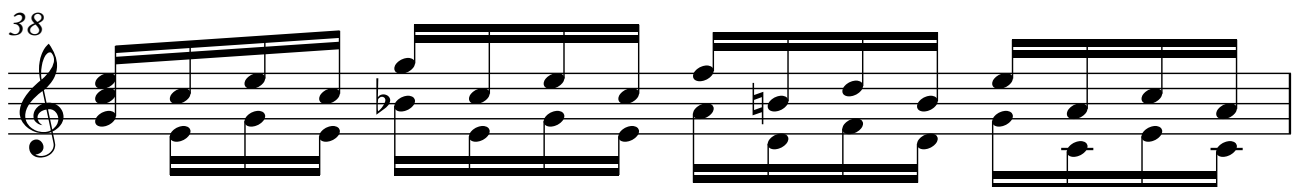
Musical notation for measure 36, featuring a treble clef, a key signature of one sharp (F#), and a 7/8 time signature. The melody continues with eighth and sixteenth notes, and the bass line maintains its complex rhythmic pattern.

37



Musical notation for measure 37, featuring a treble clef, a key signature of one sharp (F#), and a 7/8 time signature. The melody continues with eighth and sixteenth notes, and the bass line maintains its complex rhythmic pattern.

38



Musical notation for measure 38, featuring a treble clef, a key signature of one sharp (F#), and a 7/8 time signature. The melody continues with eighth and sixteenth notes, and the bass line maintains its complex rhythmic pattern.

39



Musical notation for measure 39, featuring a treble clef, a key signature of one sharp (F#), and a 7/8 time signature. The melody continues with eighth and sixteenth notes, and the bass line maintains its complex rhythmic pattern.

