

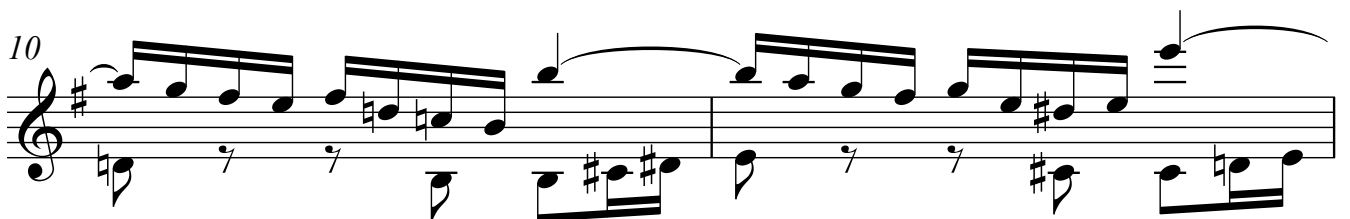
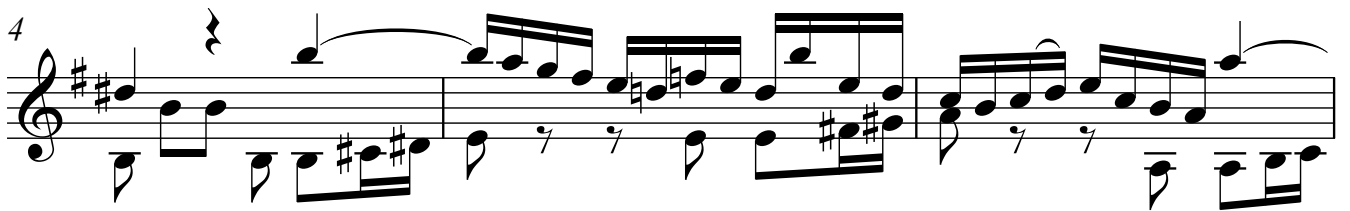
BWV-198

ARIA

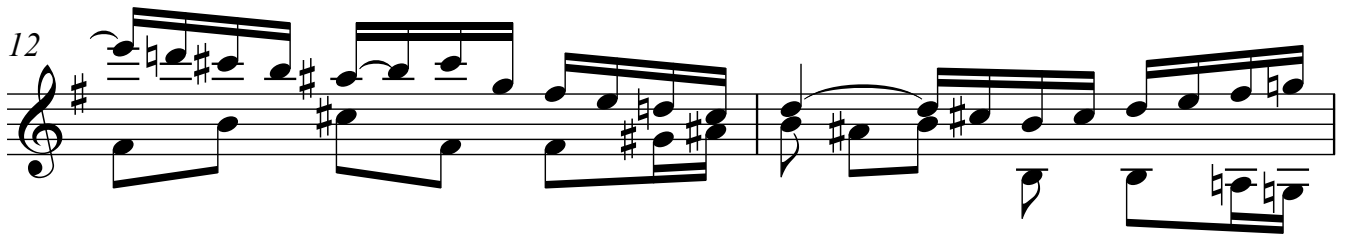
ARMONIZADO: LUIS ALVAREZ

J.S. BACH

♩=80

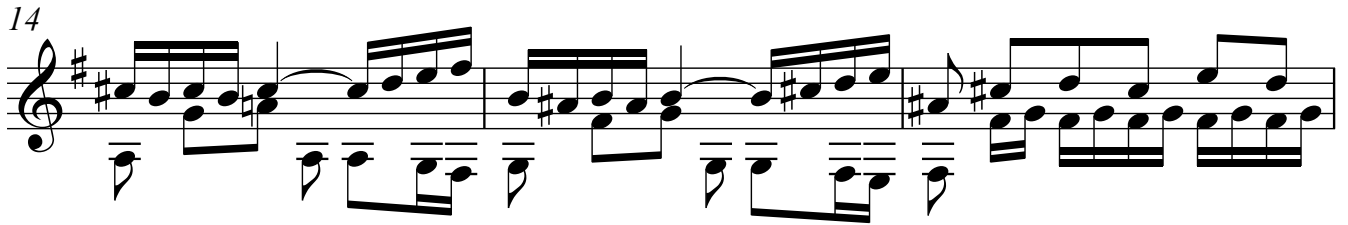


12



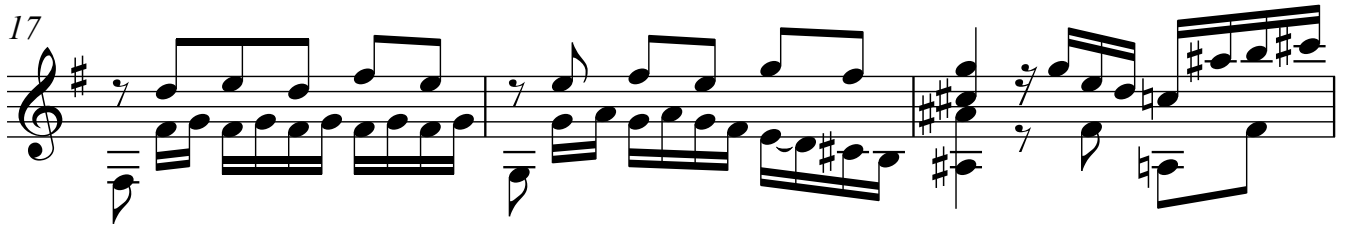
Musical notation for measures 12 and 13. The key signature is one sharp (F#). The melody in the treble clef features eighth-note patterns and slurs. The bass line provides harmonic support with chords and single notes.

14



Musical notation for measures 14 and 15. The melody continues with eighth-note runs and slurs. The bass line features a steady eighth-note accompaniment.

17



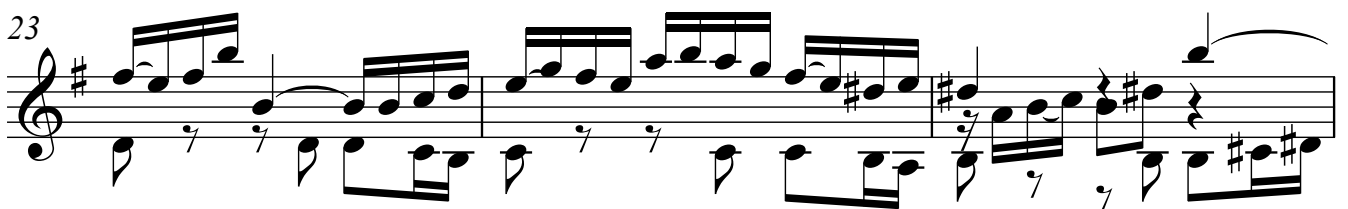
Musical notation for measures 17 and 18. Measure 17 includes a fermata over the final note. The melody and bass line continue with rhythmic patterns.

20



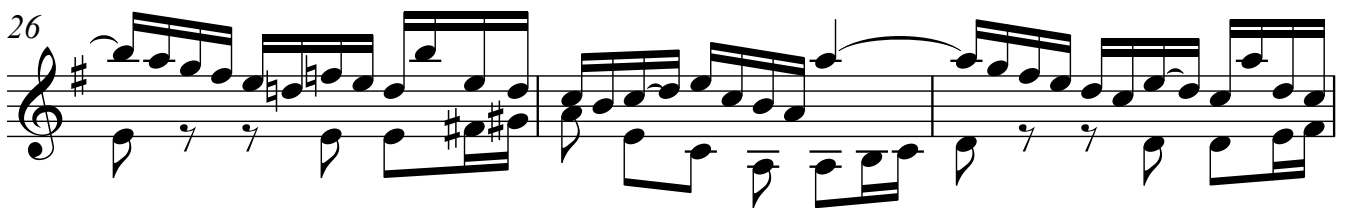
Musical notation for measures 20 and 21. Measure 20 features a trill (tr) over a note. The melody and bass line continue with rhythmic patterns.

23



Musical notation for measures 23 and 24. The melody and bass line continue with rhythmic patterns and slurs.

26



Musical notation for measures 26 and 27. The melody and bass line continue with rhythmic patterns and slurs.

29 3

32

34

37

39

41

44

47

49

52

55

58

61 5

64

67

70

73

76

6 79

82

85

88

91

93