

 **Secõd liure contenãt trois Gaillardes,**

TROIS PAVANES, VINGT TROIS BRANLES,
Tant gays, Simples, Que doubles, Douze basses dances, & Neuf tourdions,
En somme Cinquante, Le tout ordonne selon les huit tons. Et
nouvellement imprime en Musique a quatre parties, en ung
liure seul, par Pierre Attaignant, Imprimeur
de musique du Roy, demourant a Paris
en la Rue de la Harpe, pres
leglise saint Cosme.

1547.

Avec prerogation du priuilege du Roy, De nouuel obtenu par ledit ataignant
Pour les liures la par luy imprimez & quil Imprimera cy apres iusques a six ans.

SVPERIVS

Basse
dance

Musical staff for Basses, first system. The staff is in 9/8 time and contains a melodic line with eighth and sixteenth notes. The label 'Basse dance' is written vertically to the left of the staff.

Musical staff for Basses, second system. The staff continues the melodic line from the first system. The label 'Basse dance' is written vertically to the right of the staff.

Musical staff for Basses, third system. The staff continues the melodic line. The label 'Tenor' is written below the staff.

Basse
dance

Musical staff for Basses, fourth system. The staff continues the melodic line. The label 'Basse dance' is written vertically to the left of the staff.

Musical staff for Basses, fifth system. The staff continues the melodic line. The label 'Basse dance' is written vertically to the right of the staff.

Musical staff for Basses, sixth system. The staff continues the melodic line.

CONTRATENOR

Fo II

Basse
danse

Basse
danse

BASSVS.

Basse
danse

Basse
danse

SUPERIVS

Basse
danse

A musical staff for Basses and dances. It begins with a treble clef, a key signature of one flat (B-flat), and a common time signature. The notation consists of a series of eighth and sixteenth notes, mostly beamed together, with some rests. The staff ends with a double bar line and a repeat sign.

A musical staff for Basses and dances, continuing the notation from the previous staff. It features similar rhythmic patterns of eighth and sixteenth notes. The staff concludes with a double bar line and a repeat sign.

A musical staff for Basses and dances, continuing the notation. It shows a continuation of the rhythmic patterns. The staff ends with a double bar line and a repeat sign.

TENOR

Basse
danse

A musical staff for Basses and dances. It starts with a treble clef, a key signature of one flat, and a common time signature. The notation is similar to the previous staves, with eighth and sixteenth notes. The staff ends with a double bar line and a repeat sign.

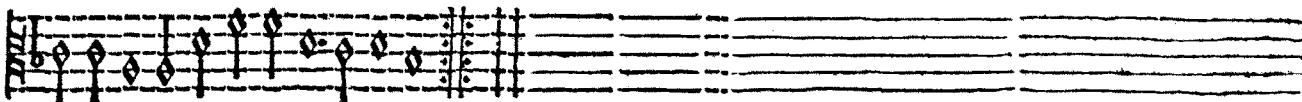
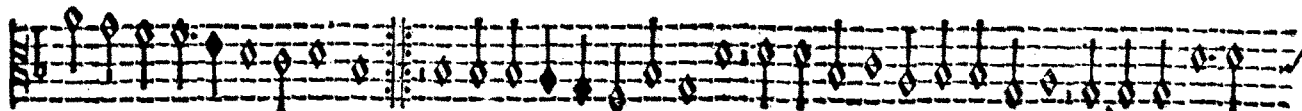
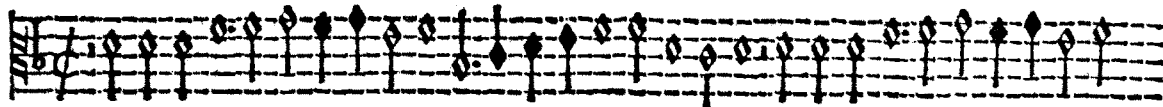
A musical staff for Basses and dances, continuing the notation. It features the same rhythmic patterns as the previous staves. The staff ends with a double bar line and a repeat sign.

A musical staff for Basses and dances, continuing the notation. It shows the continuation of the rhythmic patterns. The staff ends with a double bar line and a repeat sign.

CONTRATENOR

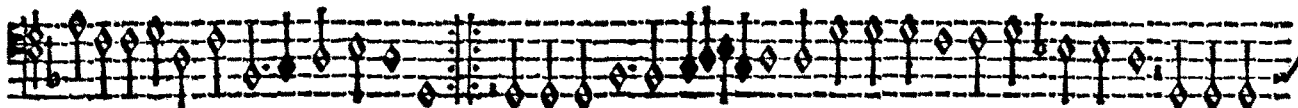
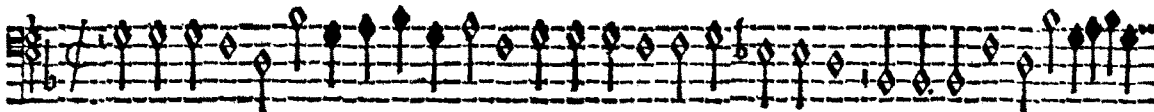
Fo. II F

Basse
dance



BASSVS

Basse
dance



SVPERIVS

Basse
dance

Musical notation for Basses and Dance. It consists of three staves. The top staff is a single melodic line. The middle staff is a tenor line, indicated by the label 'TENOR' below it. The bottom staff is a bass line. The notation includes various rhythmic values and rests, with a double bar line in the middle of each staff.

TENOR

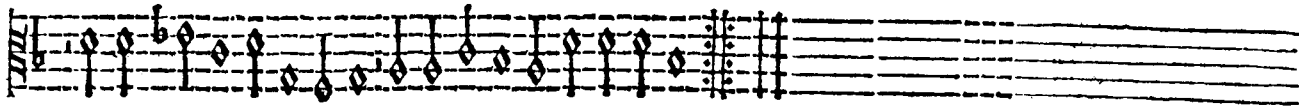
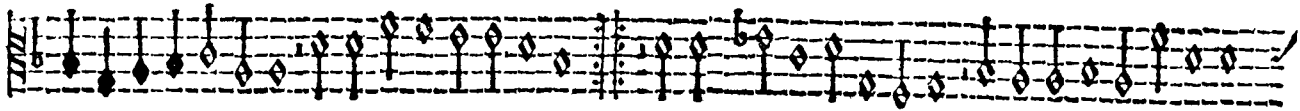
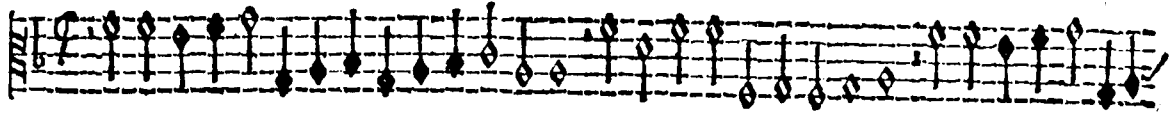
Basse
dance

Musical notation for Basses and Dance. It consists of three staves. The top staff is a single melodic line. The middle staff is a tenor line, indicated by the label 'TENOR' below it. The bottom staff is a bass line. The notation includes various rhythmic values and rests, with a double bar line in the middle of each staff.

CONTRATENOR

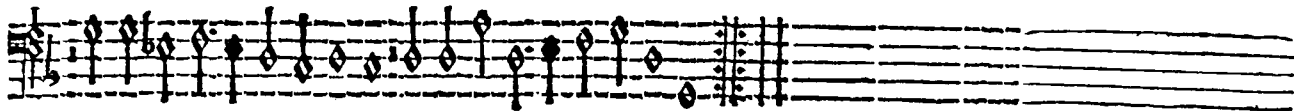
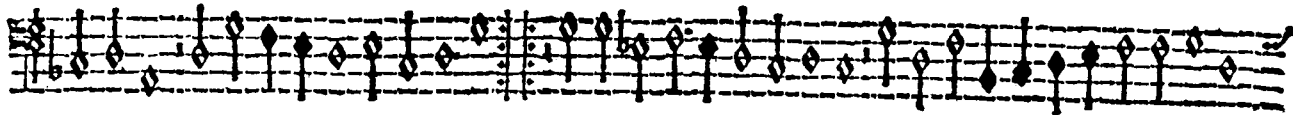
Fo III I

Balfe
dance



BASSVS

Balfe
dance

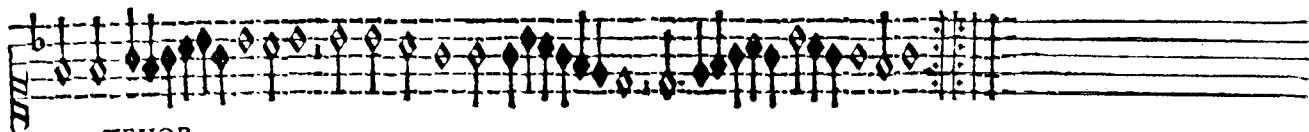
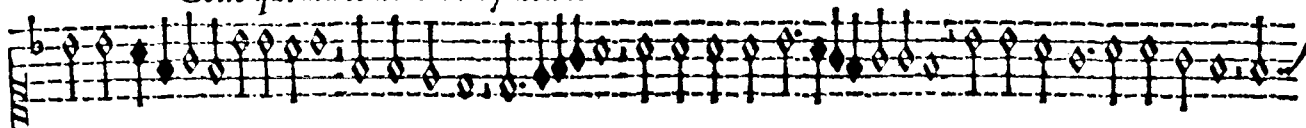


SVPERIVS

Basse
dançe

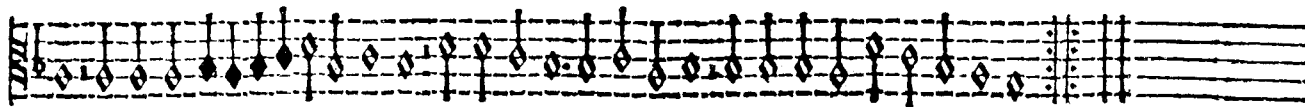
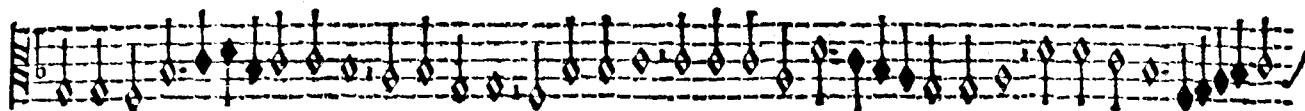
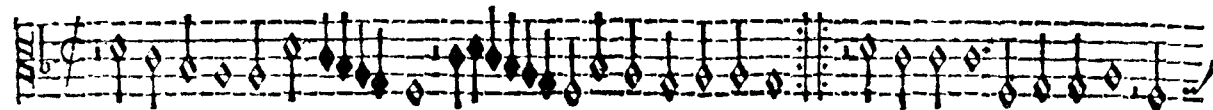


Celle qui ma le nom d'amy donne



TENOR

Basse
dançe



CONTRATENOR

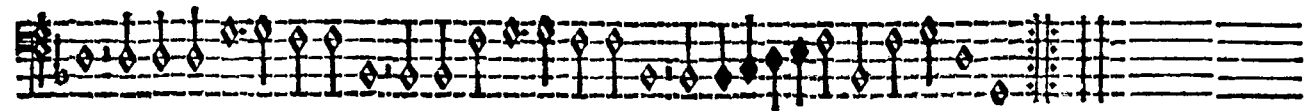
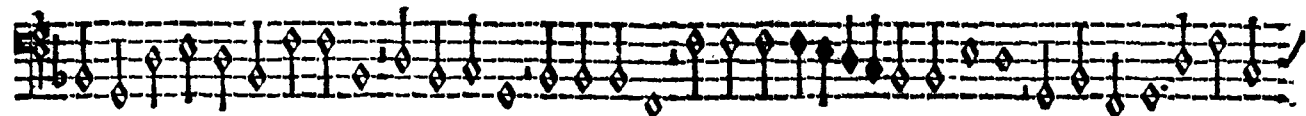
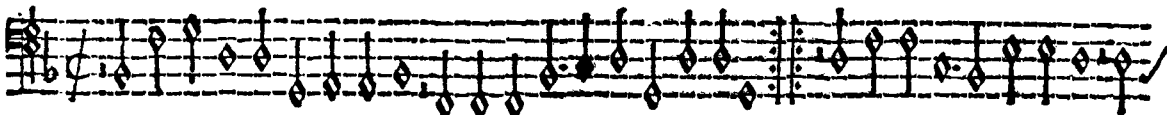
Fo. V

Basse
adance



BASSVS

Basse
adance



SVPERIVS

Basse
Basse

A musical staff for Bass, featuring a treble clef and a key signature of one flat. The staff contains a series of notes, including quarter and eighth notes, with stems pointing upwards. A double bar line is present near the end of the staff.

La volonte

A musical staff for La volonte, featuring a treble clef and a key signature of one flat. The staff contains a series of notes, including quarter and eighth notes, with stems pointing upwards. A double bar line is present near the end of the staff.

A musical staff for La volonte, featuring a treble clef and a key signature of one flat. The staff contains a series of notes, including quarter and eighth notes, with stems pointing upwards. A double bar line is present near the end of the staff.

TENOR

Basse
Basse

A musical staff for Tenor, featuring a treble clef and a key signature of one flat. The staff contains a series of notes, including quarter and eighth notes, with stems pointing upwards. A double bar line is present near the end of the staff.

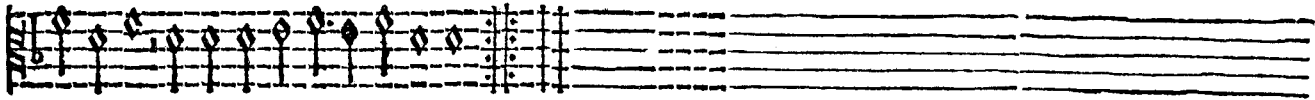
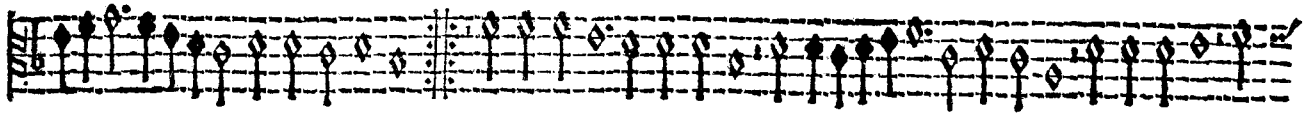
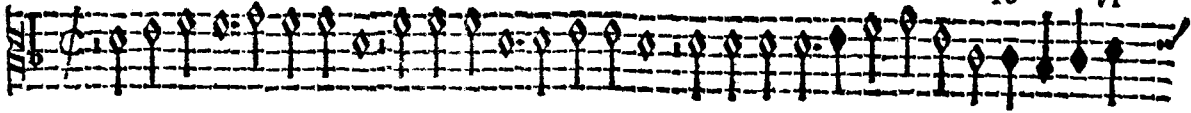
A musical staff for Tenor, featuring a treble clef and a key signature of one flat. The staff contains a series of notes, including quarter and eighth notes, with stems pointing upwards. A double bar line is present near the end of the staff.

A musical staff for Tenor, featuring a treble clef and a key signature of one flat. The staff contains a series of notes, including quarter and eighth notes, with stems pointing upwards. A double bar line is present near the end of the staff.

CONTRATENOR

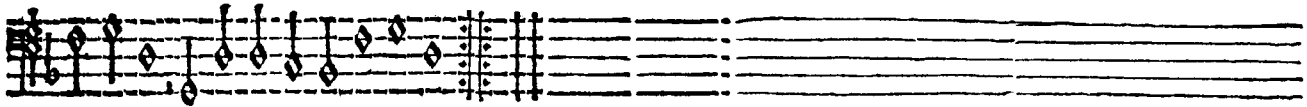
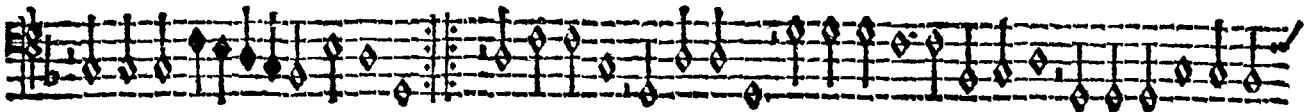
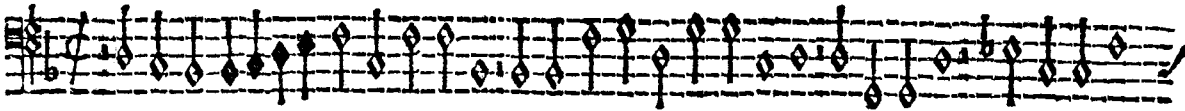
Fo VI

Buffe
dance



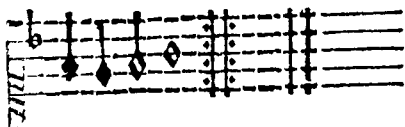
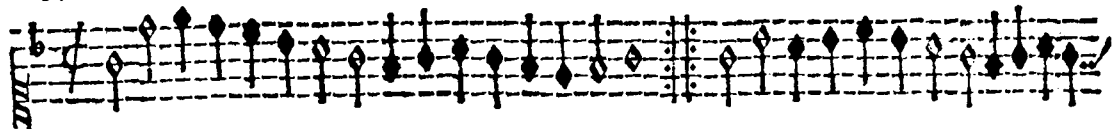
BASSVS

Buffe
dance

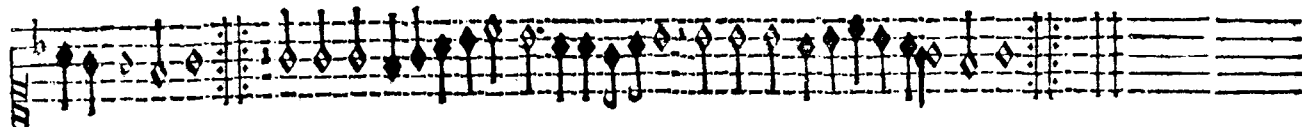
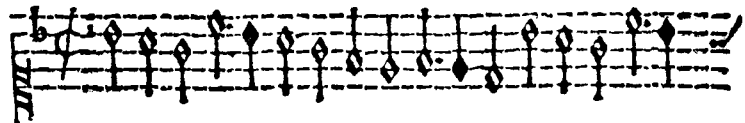


SUPERIUS

Tourdion

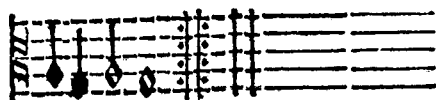
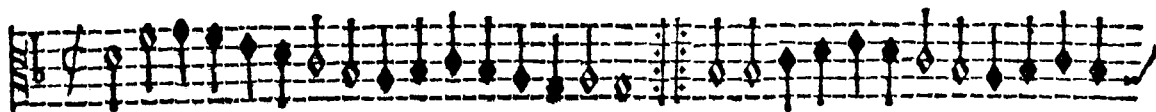


Tourdion

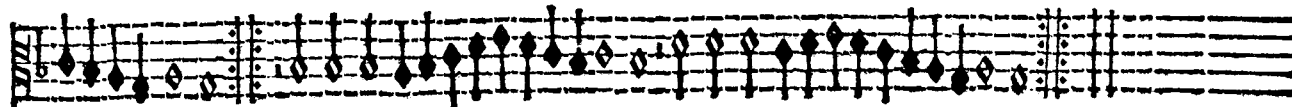
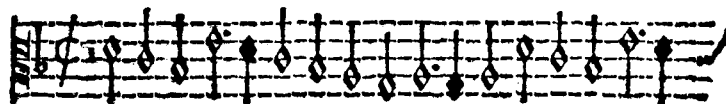


TENOR

Tourdion




Tourdion



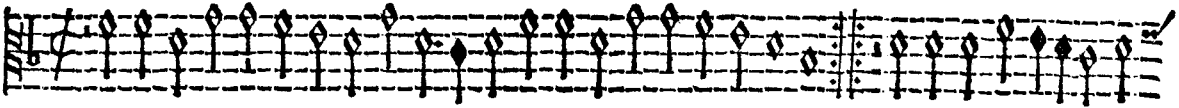
CONTRATENOR

Tourdion

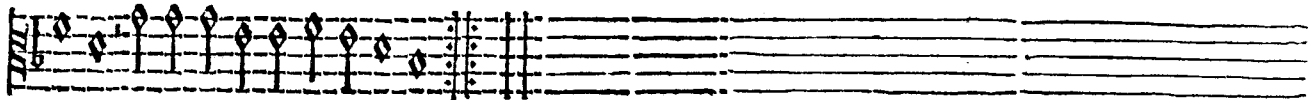


A musical staff for Contratenor, first system. It begins with a treble clef, a key signature of one flat (B-flat), and a 6/8 time signature. The melody consists of eighth and quarter notes. The staff ends with a double bar line and repeat dots.

Tourdion



A musical staff for Contratenor, second system. It continues the melody from the first system. The staff ends with a double bar line and repeat dots.



A musical staff for Contratenor, third system. It continues the melody from the second system. The staff ends with a double bar line and repeat dots.

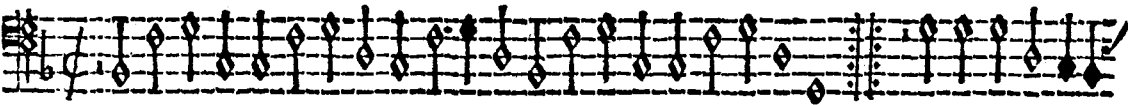
BASSVS.

Tourdion

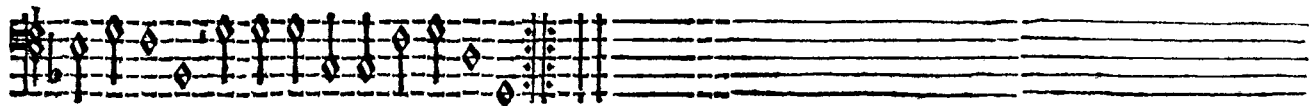


A musical staff for Bass, first system. It begins with a bass clef, a key signature of one flat (B-flat), and a 6/8 time signature. The melody consists of eighth and quarter notes. The staff ends with a double bar line and repeat dots.

Tourdion



A musical staff for Bass, second system. It continues the melody from the first system. The staff ends with a double bar line and repeat dots.



A musical staff for Bass, third system. It continues the melody from the second system. The staff ends with a double bar line and repeat dots.

SUPERIUS

Tour dion

Musical staff for Soprano (SUPERIUS) in G major, 4/4 time. The staff begins with a treble clef, a key signature of one sharp (F#), and a common time signature (C). The music consists of a series of eighth and sixteenth notes, with some rests. The staff ends with a double bar line and a repeat sign.

Musical staff for Soprano (SUPERIUS) in G major, 4/4 time. The staff begins with a treble clef, a key signature of one sharp (F#), and a common time signature (C). The music consists of a series of eighth and sixteenth notes, with some rests. The staff ends with a double bar line and a repeat sign.

Tour dion

Musical staff for Soprano (SUPERIUS) in G major, 4/4 time. The staff begins with a treble clef, a key signature of one sharp (F#), and a common time signature (C). The music consists of a series of eighth and sixteenth notes, with some rests. The staff ends with a double bar line and a repeat sign.

Musical staff for Soprano (SUPERIUS) in G major, 4/4 time. The staff begins with a treble clef, a key signature of one sharp (F#), and a common time signature (C). The music consists of a series of eighth and sixteenth notes, with some rests. The staff ends with a double bar line and a repeat sign.

TENOR

Tour dion

Musical staff for Tenor (TENOR) in G major, 4/4 time. The staff begins with a treble clef, a key signature of one sharp (F#), and a common time signature (C). The music consists of a series of eighth and sixteenth notes, with some rests. The staff ends with a double bar line and a repeat sign.

Musical staff for Tenor (TENOR) in G major, 4/4 time. The staff begins with a treble clef, a key signature of one sharp (F#), and a common time signature (C). The music consists of a series of eighth and sixteenth notes, with some rests. The staff ends with a double bar line and a repeat sign.

Tour dion

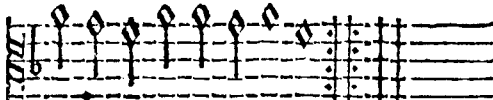
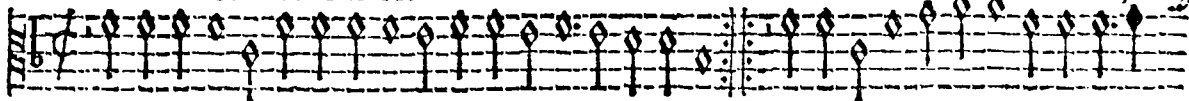
Musical staff for Tenor (TENOR) in G major, 4/4 time. The staff begins with a treble clef, a key signature of one sharp (F#), and a common time signature (C). The music consists of a series of eighth and sixteenth notes, with some rests. The staff ends with a double bar line and a repeat sign.

Musical staff for Tenor (TENOR) in G major, 4/4 time. The staff begins with a treble clef, a key signature of one sharp (F#), and a common time signature (C). The music consists of a series of eighth and sixteenth notes, with some rests. The staff ends with a double bar line and a repeat sign.

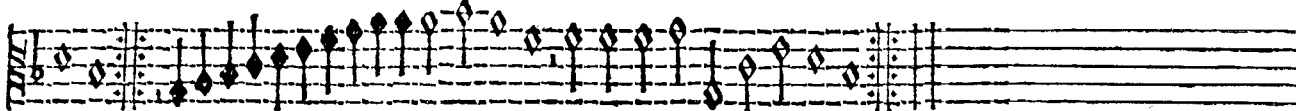
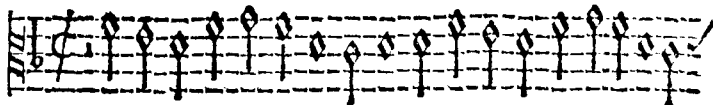
CONTRATENOR

Es viii

Tour dion

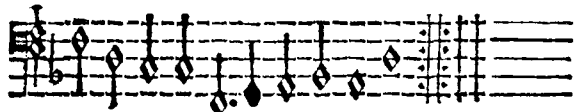
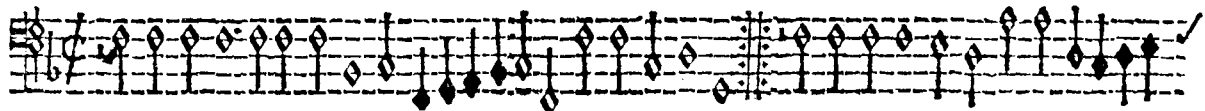


Tour dion

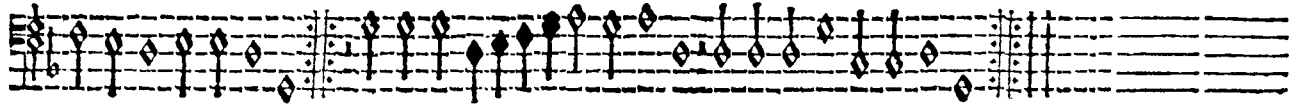
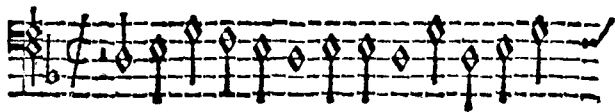


BASSVS

Tour dion

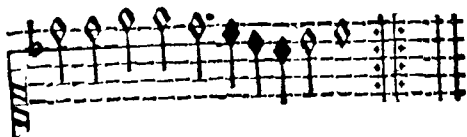
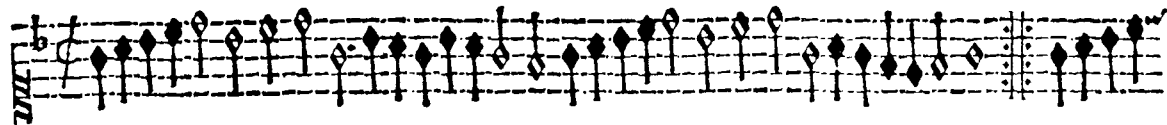


Tour dion

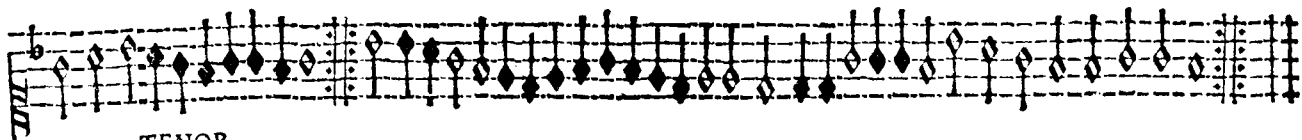


SVPERIVS

Branle

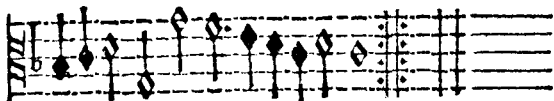


Branle

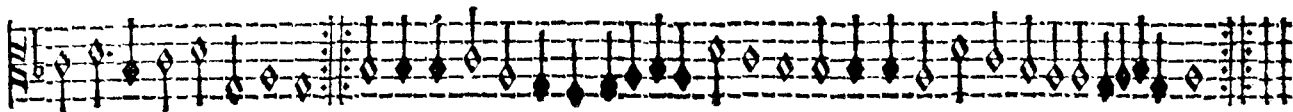


TENOR

Branle



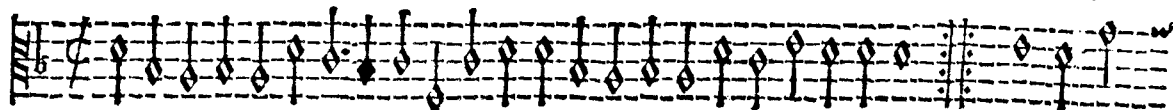
Branle



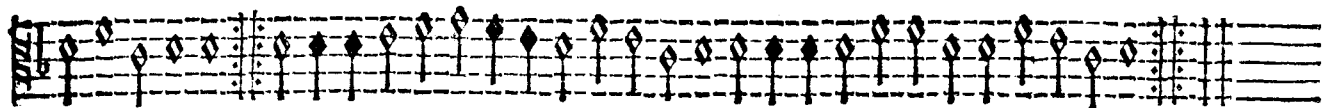
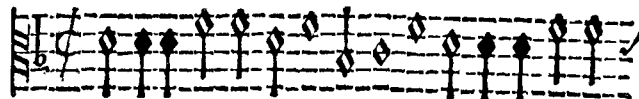
CONTRATENOR

Fo IX

Branle

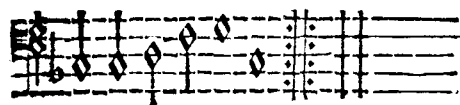
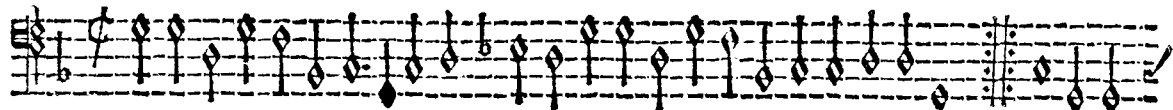


Branle

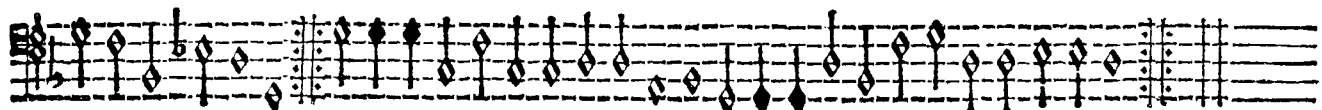
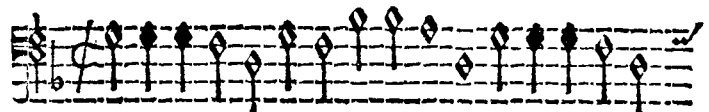


BASSVS

Branle

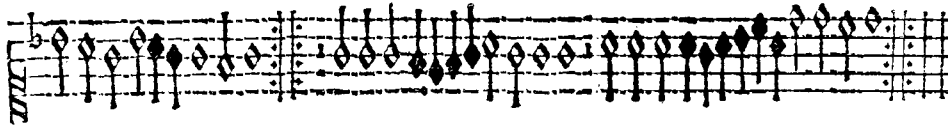


Branle



SUPERIUS

Tromboni

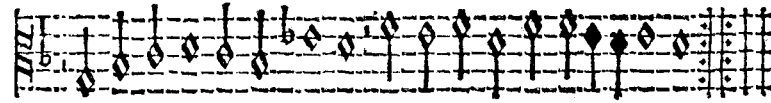
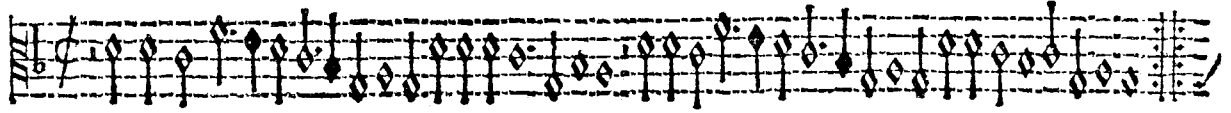


Brante

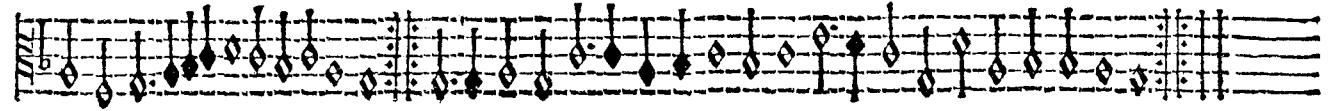
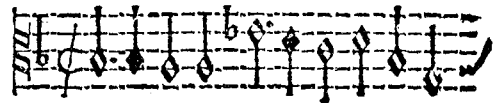


TENOR

Tromboni



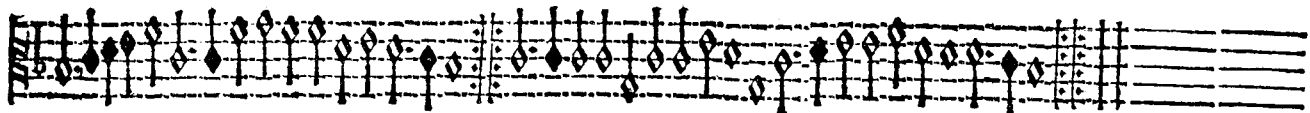
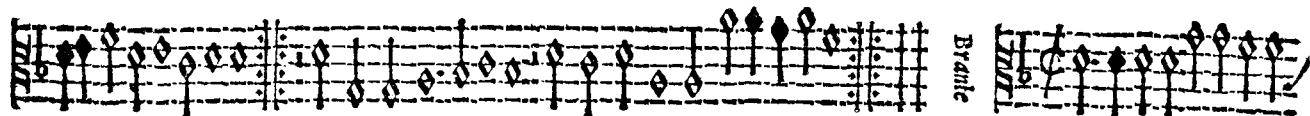
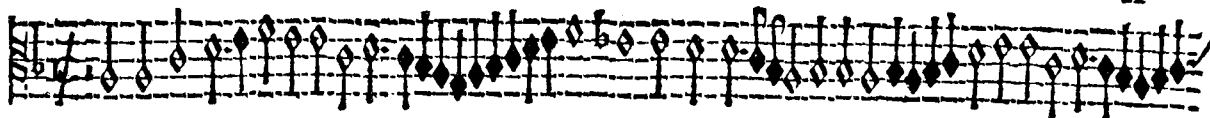
Brante



CONTRATENOR

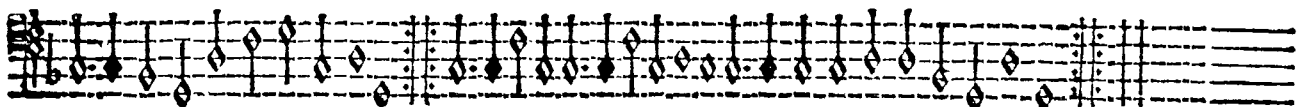
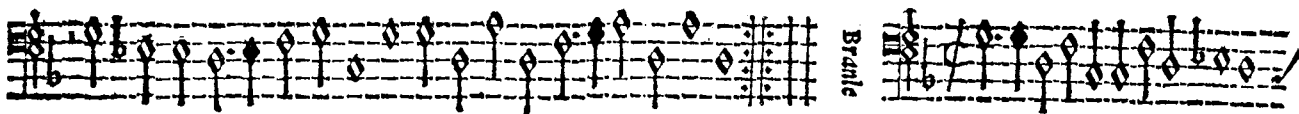
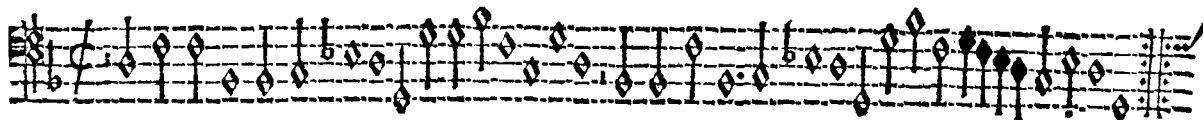
Fo X

Tour dion



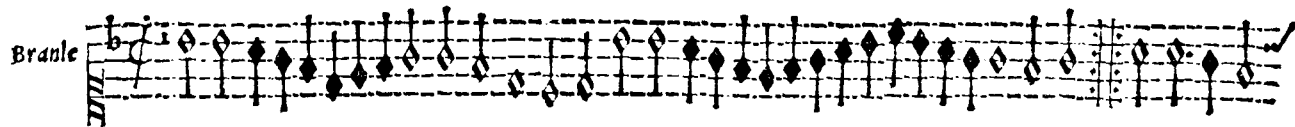
BASSVS

Tour dion

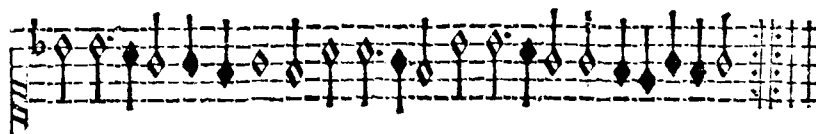


SVPERIVS

Branle

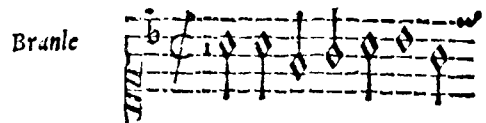


A musical staff for the Soprano part, labeled 'Branle'. It features a treble clef, a key signature of one flat (B-flat), and a common time signature. The melody consists of a series of eighth and sixteenth notes, with some notes beamed together. The staff ends with a double bar line and a repeat sign.

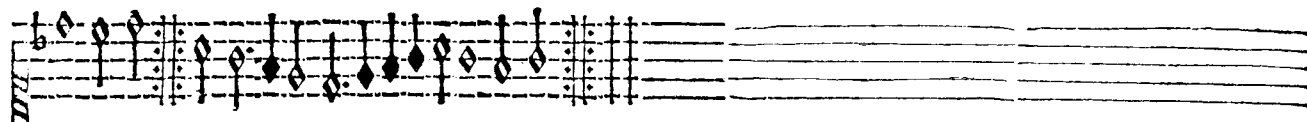


A musical staff for the Soprano part, continuing the melody from the first staff. It features a treble clef, a key signature of one flat, and a common time signature. The melody consists of a series of eighth and sixteenth notes, with some notes beamed together. The staff ends with a double bar line and a repeat sign.

Branle



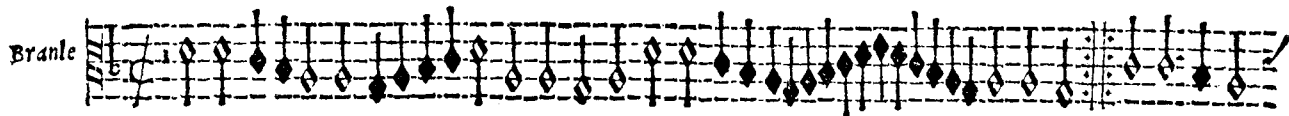
A musical staff for the Soprano part, labeled 'Branle'. It features a treble clef, a key signature of one flat, and a common time signature. The melody consists of a series of eighth and sixteenth notes, with some notes beamed together. The staff ends with a double bar line and a repeat sign.



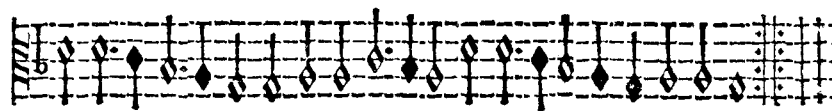
A musical staff for the Soprano part, continuing the melody from the previous staves. It features a treble clef, a key signature of one flat, and a common time signature. The melody consists of a series of eighth and sixteenth notes, with some notes beamed together. The staff ends with a double bar line and a repeat sign.

TENOR

Branle

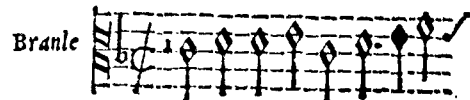


A musical staff for the Tenor part, labeled 'Branle'. It features a bass clef, a key signature of one flat, and a common time signature. The melody consists of a series of eighth and sixteenth notes, with some notes beamed together. The staff ends with a double bar line and a repeat sign.



A musical staff for the Tenor part, continuing the melody from the first staff. It features a bass clef, a key signature of one flat, and a common time signature. The melody consists of a series of eighth and sixteenth notes, with some notes beamed together. The staff ends with a double bar line and a repeat sign.

Branle



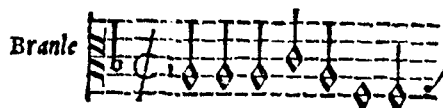
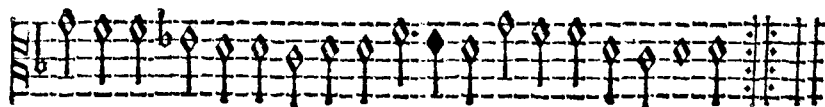
A musical staff for the Tenor part, labeled 'Branle'. It features a bass clef, a key signature of one flat, and a common time signature. The melody consists of a series of eighth and sixteenth notes, with some notes beamed together. The staff ends with a double bar line and a repeat sign.



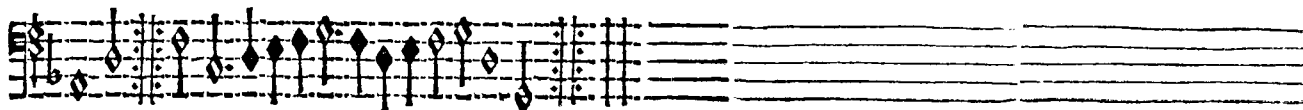
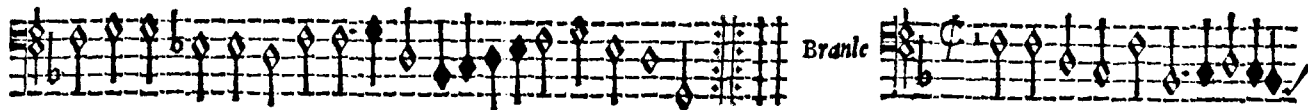
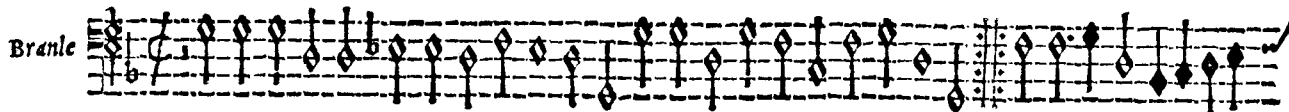
A musical staff for the Tenor part, continuing the melody from the previous staves. It features a bass clef, a key signature of one flat, and a common time signature. The melody consists of a series of eighth and sixteenth notes, with some notes beamed together. The staff ends with a double bar line and a repeat sign.

CONTRATENOR

Fo. XI



BASSVS.



SUPÉRIUS

Braille

Braille

TENOR

Braille

Braille

CONTRATENOR.

Fo X/7

Braille

BASSVS

Braille

SVPERIVS

Basse
danse

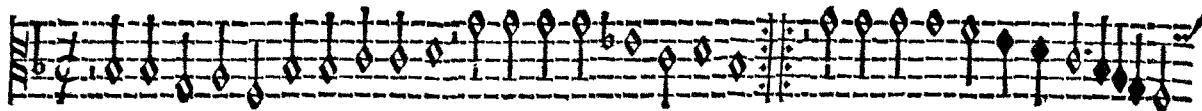
TENOR

Basse
danse

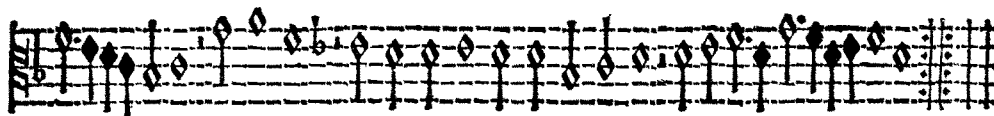
CONTRATENOR

Fo. X III

Basse
danse

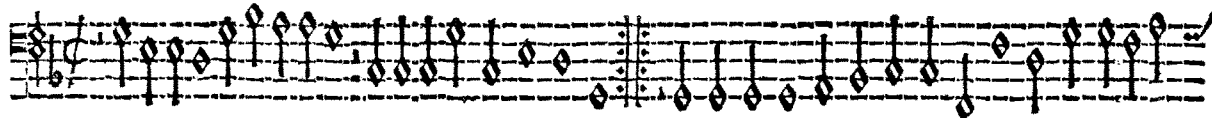


Braille

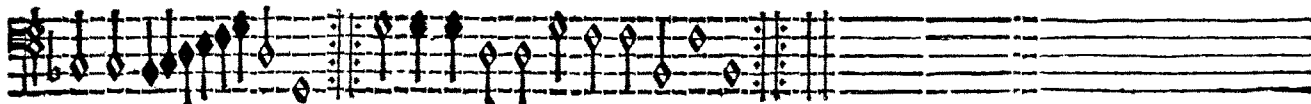
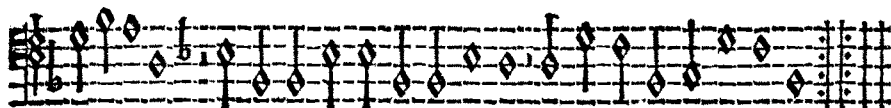


BASSVS

Basse
danse



Braille

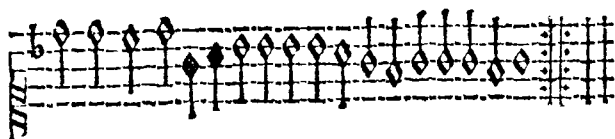


SVPERIVS

Brancie

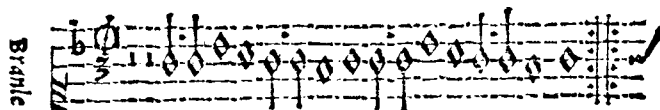


A musical staff for Soprano (Brancie) in G major, 4/4 time. It begins with a treble clef and a key signature of one sharp (F#). The melody consists of quarter and eighth notes, with some beamed eighth notes. The staff ends with a double bar line and repeat dots.



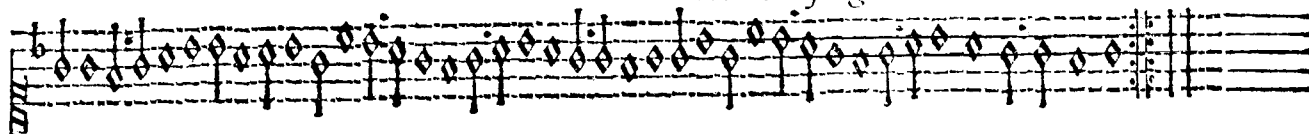
A musical staff for Soprano (Brancie) in G major, 4/4 time. It continues the melody from the first system. The staff ends with a double bar line and repeat dots.

Brancie



A musical staff for Soprano (Brancie) in G major, 4/4 time. It continues the melody from the previous systems. The staff ends with a double bar line and repeat dots.

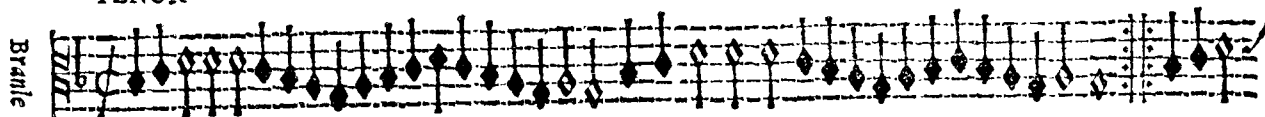
Mari ie songeis lautre iour



A musical staff for Soprano (Brancie) in G major, 4/4 time. It continues the melody from the previous systems. The staff ends with a double bar line and repeat dots.

TENOR

Brancie

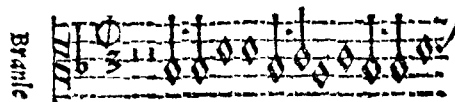


A musical staff for Tenor (Brancie) in G major, 4/4 time. It begins with a treble clef and a key signature of one sharp (F#). The melody consists of quarter and eighth notes, with some beamed eighth notes. The staff ends with a double bar line and repeat dots.



A musical staff for Tenor (Brancie) in G major, 4/4 time. It continues the melody from the first system. The staff ends with a double bar line and repeat dots.

Brancie



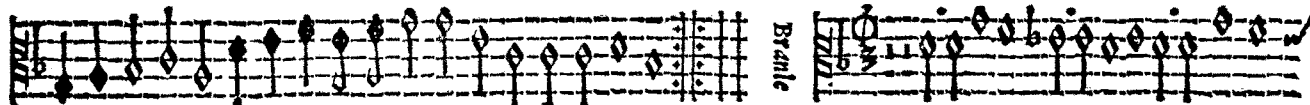
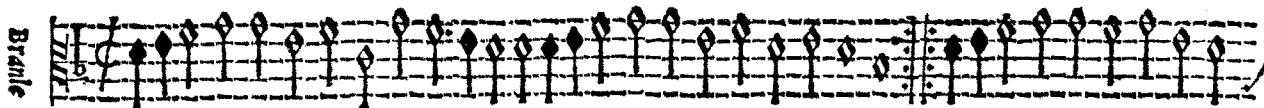
A musical staff for Tenor (Brancie) in G major, 4/4 time. It continues the melody from the previous systems. The staff ends with a double bar line and repeat dots.



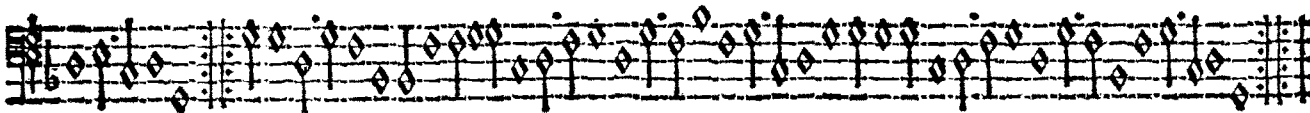
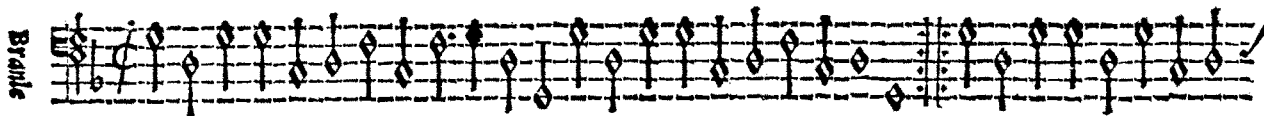
A musical staff for Tenor (Brancie) in G major, 4/4 time. It continues the melody from the previous systems. The staff ends with a double bar line and repeat dots.

CONTRATENOR

Fo XIII

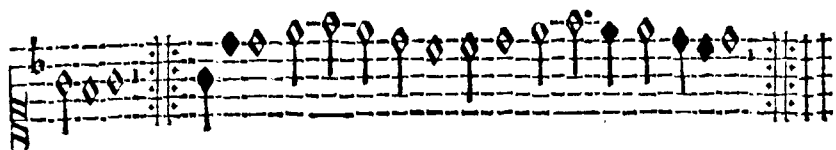
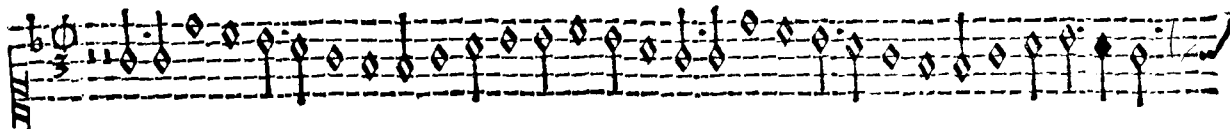


BASSVS

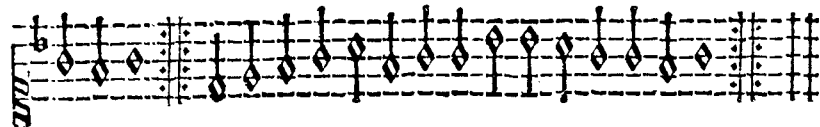
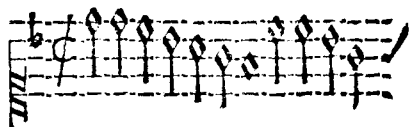


SVPERIVS

Branle

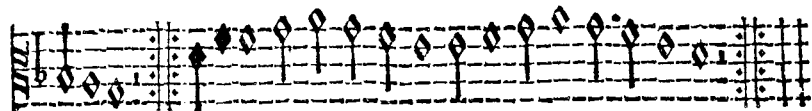
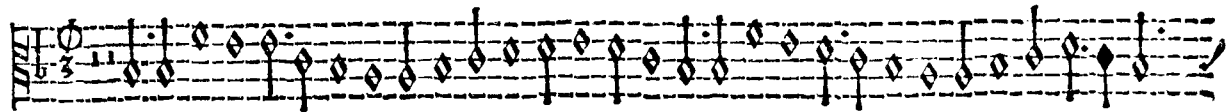


Branle

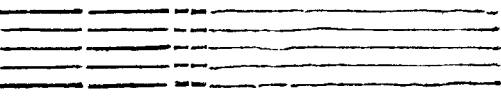
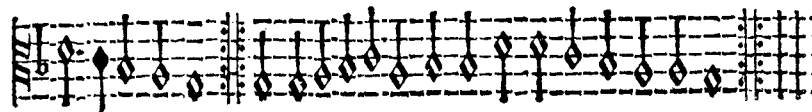
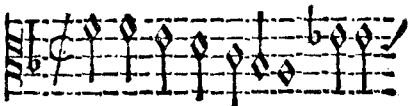


TENOR

Branle

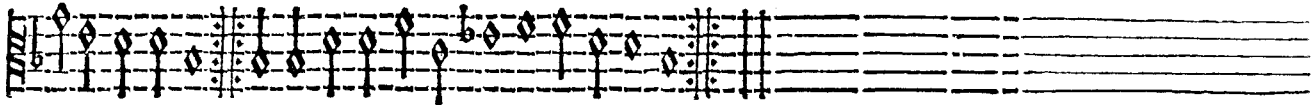
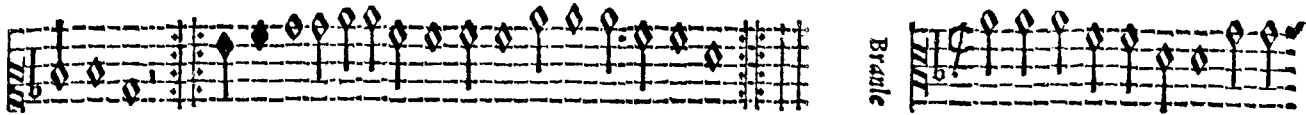
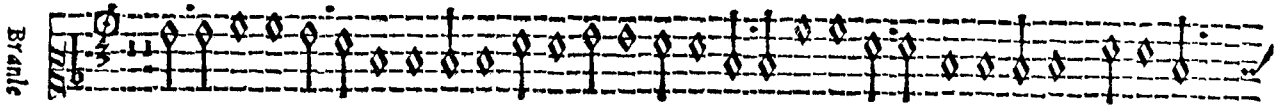


Branle

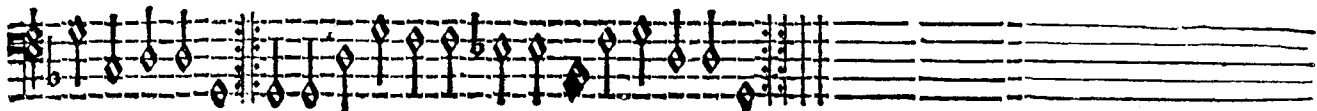
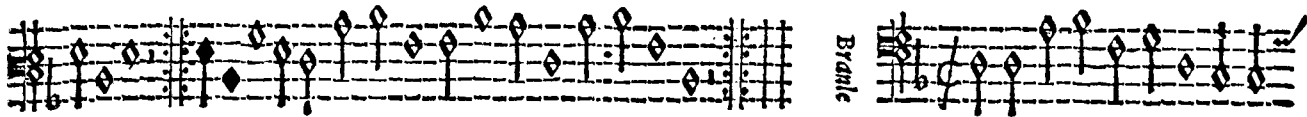
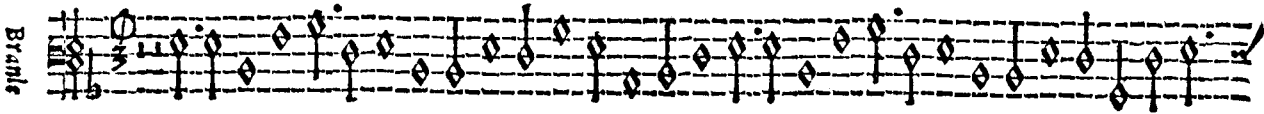


CONTRATENOR

Fo. XV



BASSVS.



SVPERIVS

Braille

Braille

Braille

TENOR

Braille

Braille

Braille

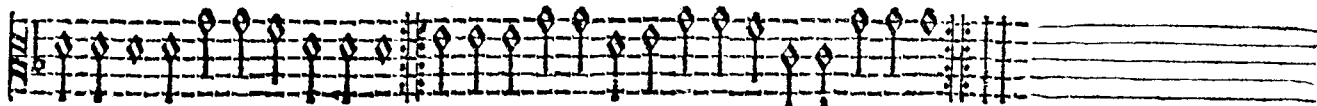
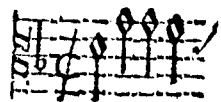
CONTRATENOR

Fº XVI

Branle

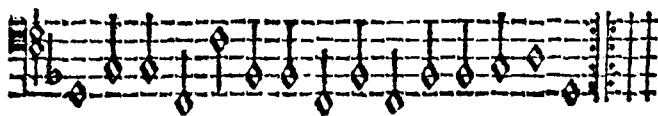


Branle

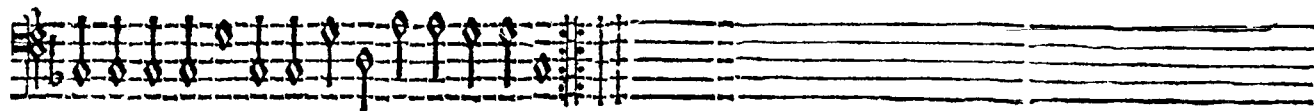


BASSVS

Branle



Branle



SVPERIVS

Branic

A musical staff for the Soprano part, labeled 'SVPERIVS'. It begins with a treble clef, a key signature of one flat (B-flat), and a common time signature. The staff contains a series of diamond-shaped notes, likely representing a specific rhythmic pattern or a simplified notation. The notes are arranged in a sequence that moves generally upwards and then downwards. The staff ends with a double bar line and a repeat sign.

A musical staff for the Soprano part, continuing the notation from the first system. It features the same diamond-shaped notes and rhythmic structure.

Branic

A musical staff for the Soprano part, continuing the notation. It features the same diamond-shaped notes and rhythmic structure.

A musical staff for the Tenor part, labeled 'TENOR'. It begins with a treble clef, a key signature of one flat (B-flat), and a common time signature. The staff contains a series of diamond-shaped notes, similar to the Soprano part but with a different melodic contour. The staff ends with a double bar line and a repeat sign.

TENOR

Branic

A musical staff for the Tenor part, continuing the notation. It features the same diamond-shaped notes and rhythmic structure.

A musical staff for the Tenor part, continuing the notation. It features the same diamond-shaped notes and rhythmic structure.

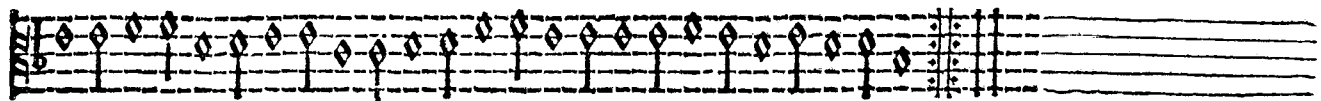
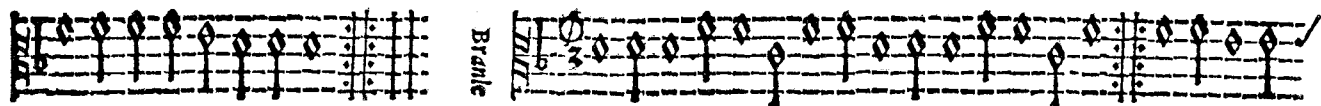
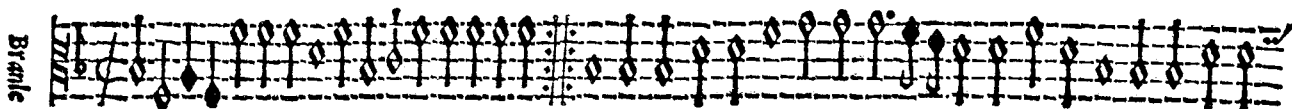
Branic

A musical staff for the Tenor part, continuing the notation. It features the same diamond-shaped notes and rhythmic structure.

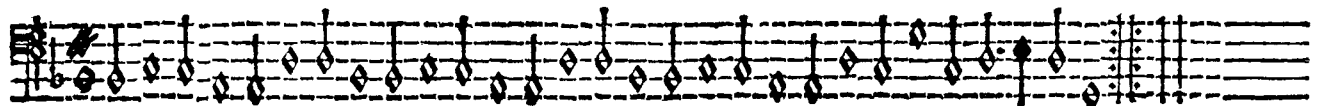
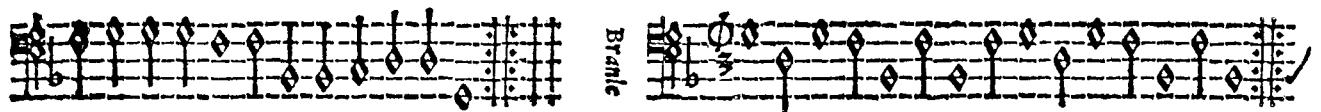
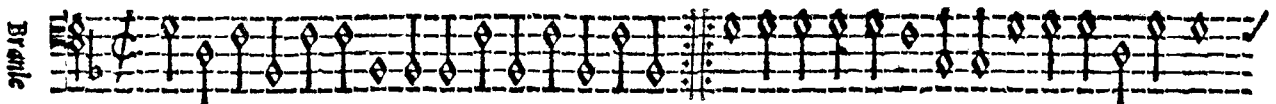
A musical staff for the Tenor part, continuing the notation. It features the same diamond-shaped notes and rhythmic structure.

CONTRATENOR

Fo. XVII



BASSVS



SVPERIVS

Basse
dance

A musical staff for Basses (dance) for the SUPERIVS section. It features a treble clef, a key signature of one flat (B-flat), and a 3/4 time signature. The melody consists of eighth and sixteenth notes, with some rests. The staff ends with a double bar line and a repeat sign.

Au pres de nous

A musical staff for Basses (dance) for the Au pres de nous section. It features a treble clef, a key signature of one flat (B-flat), and a 3/4 time signature. The melody consists of eighth and sixteenth notes, with some rests. The staff ends with a double bar line and a repeat sign.

A musical staff for Basses (dance) for the Au pres de nous section. It features a treble clef, a key signature of one flat (B-flat), and a 3/4 time signature. The melody consists of eighth and sixteenth notes, with some rests. The staff ends with a double bar line and a repeat sign.

TENOR

Basse
dance

A musical staff for Basses (dance) for the TENOR section. It features a treble clef, a key signature of one flat (B-flat), and a 3/4 time signature. The melody consists of eighth and sixteenth notes, with some rests. The staff ends with a double bar line and a repeat sign.

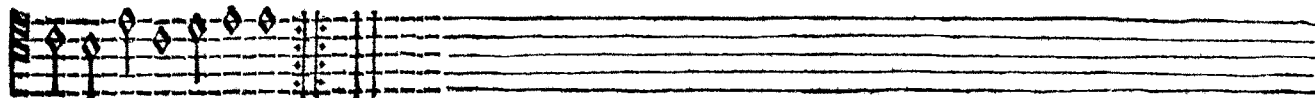
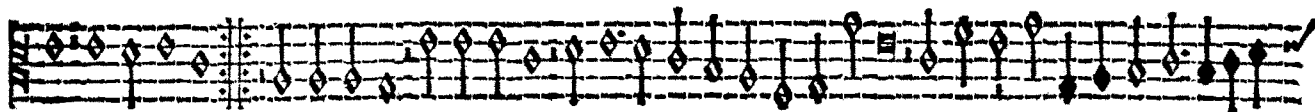
A musical staff for Basses (dance) for the TENOR section. It features a treble clef, a key signature of one flat (B-flat), and a 3/4 time signature. The melody consists of eighth and sixteenth notes, with some rests. The staff ends with a double bar line and a repeat sign.

A musical staff for Basses (dance) for the TENOR section. It features a treble clef, a key signature of one flat (B-flat), and a 3/4 time signature. The melody consists of eighth and sixteenth notes, with some rests. The staff ends with a double bar line and a repeat sign.

CONTRATENOR

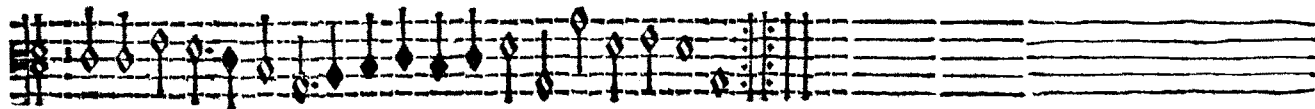
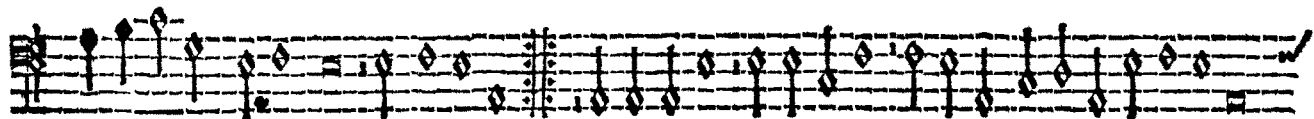
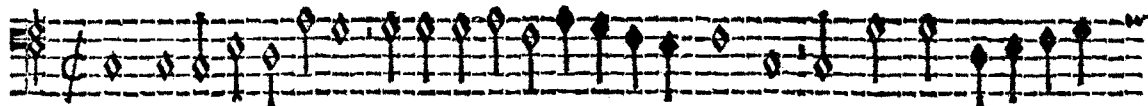
10 XV III

Basse
danse



BASSVS

Basse
danse



SVPERIVS

TORDION

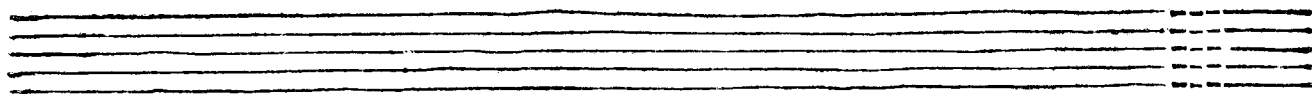
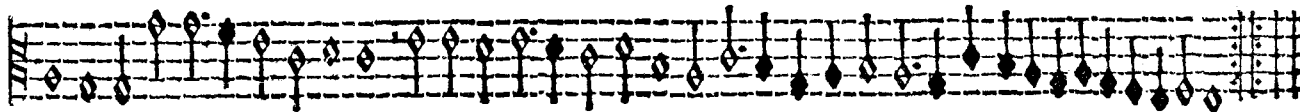


Cest grand plaisir



TENOR

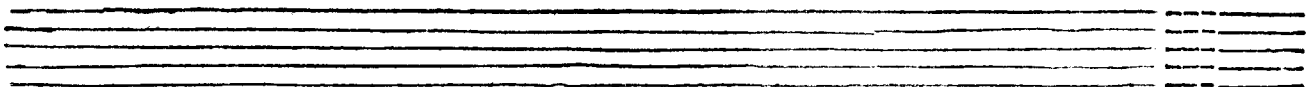
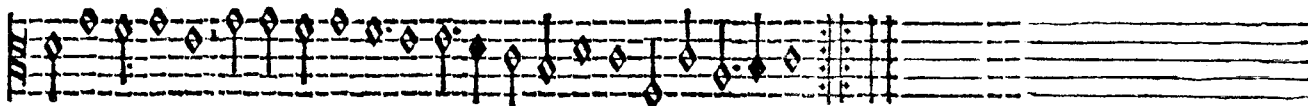
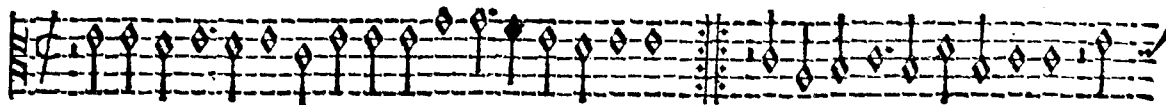
TORDION



CONTRATENOR

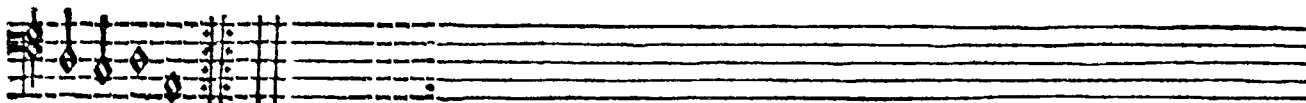
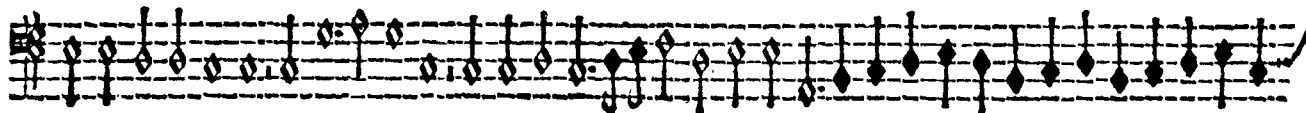
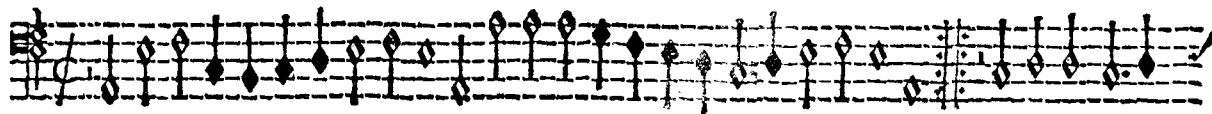
Fo. XIX

Tonרון



BASSVS.

Tonרון



SVPERIVS

TONITION

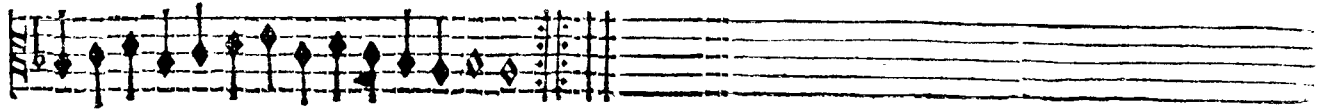
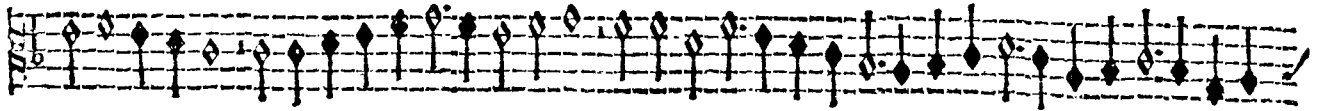


Vous aurez tout ce qui est myen



TENOR

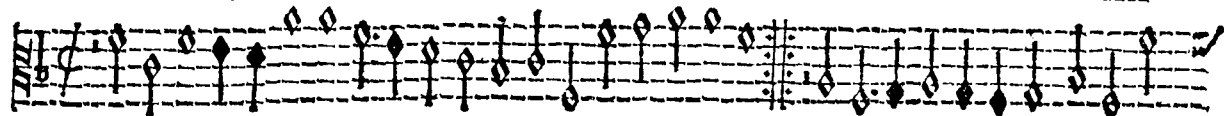
TONITION



CONTRATENOR

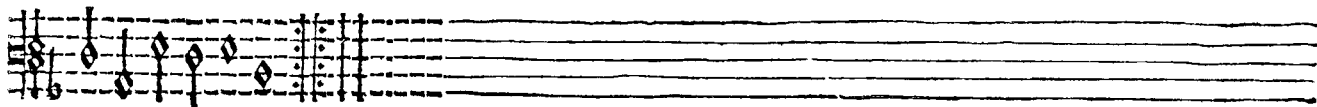
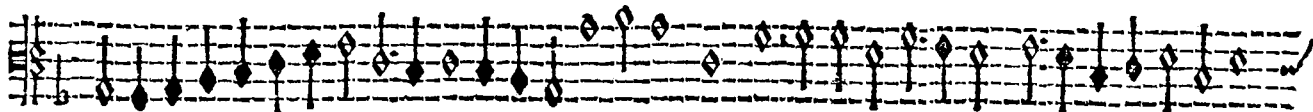
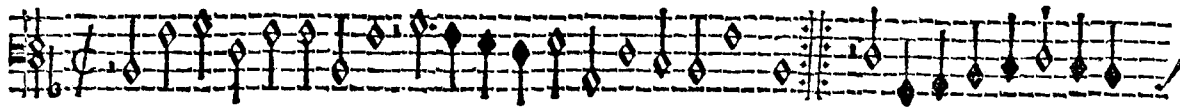
Fo XX

Tourdion



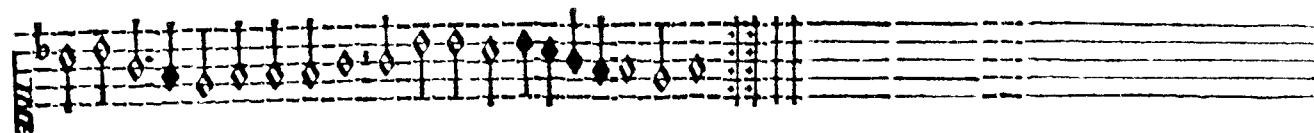
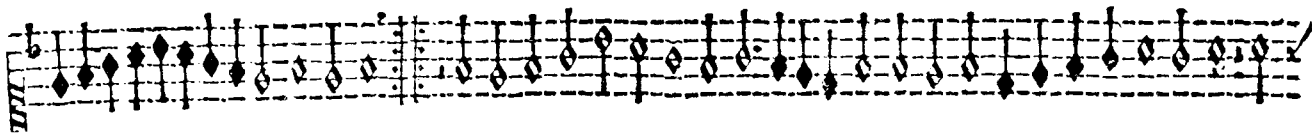
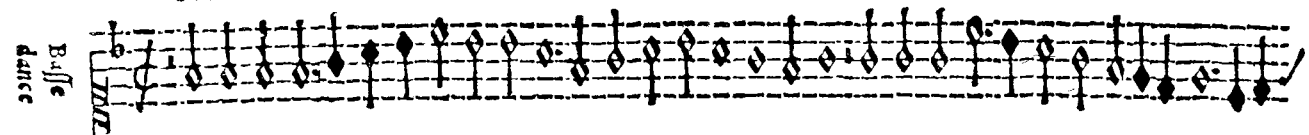
BASSVS

Tourdion



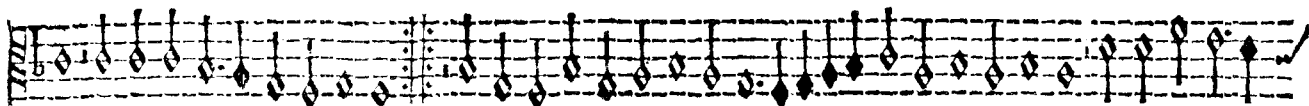
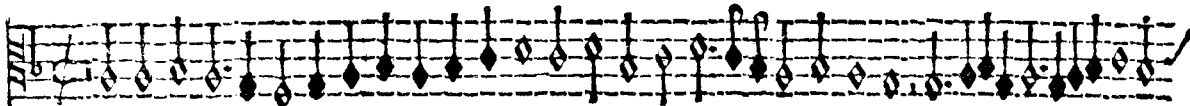
SVPERIVS

Bass
dance



TENOR

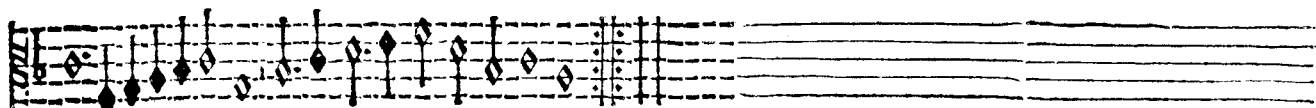
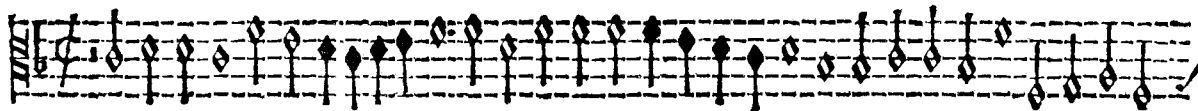
Bass
dance



CONTRATENOR

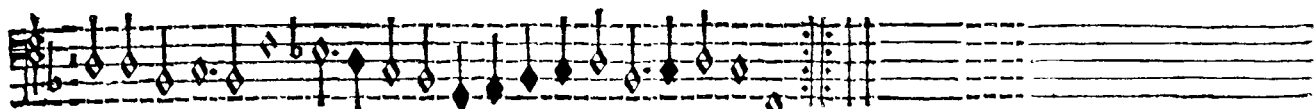
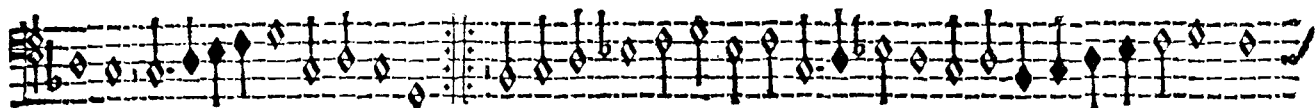
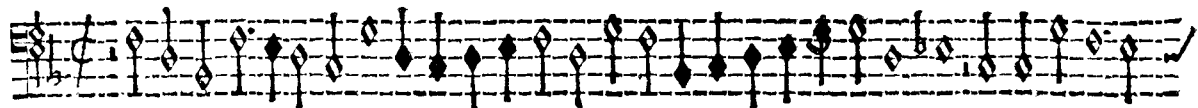
Fo. XXI

Basse
danse



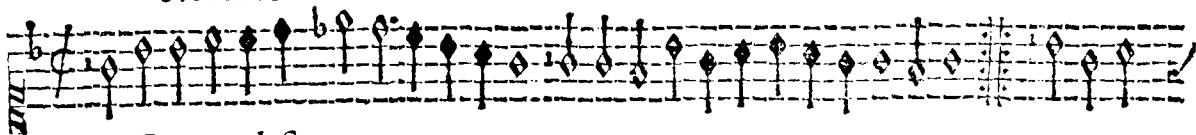
BASSVS

Basse
danse

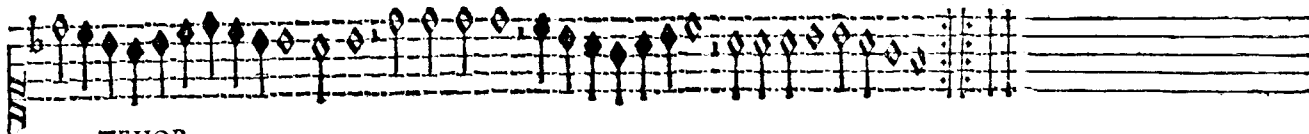


SVPERIVS

Basse
basse

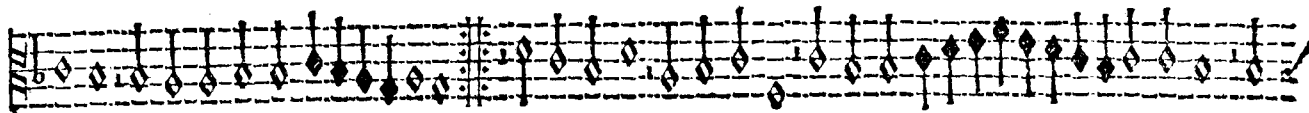
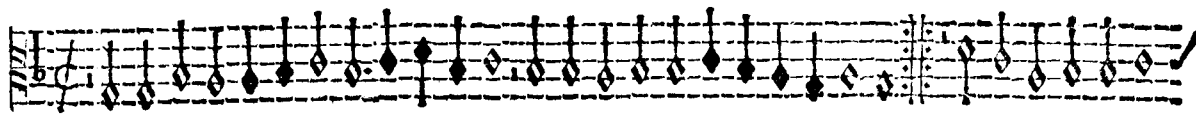


Content de sir



TENOR

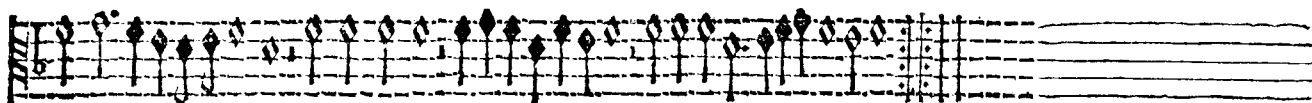
Basse
basse



CONTRATENOR

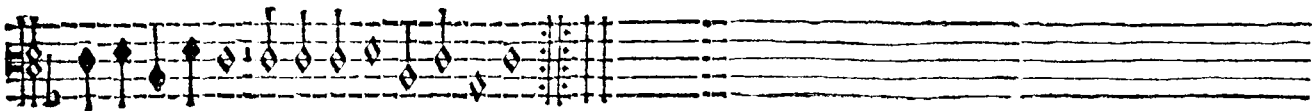
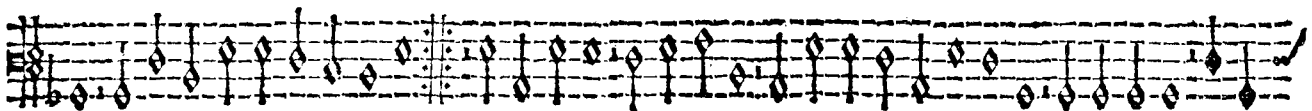
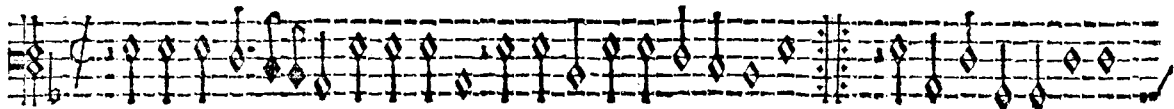
Fo XXII

Basse
douce



BASSVS

Basse
douce



SUPERIUS

Basse
danse

Par fin despit

Musical notation for the Soprano part, consisting of two systems of a five-line staff. The first system begins with a treble clef, a common time signature, and a key signature of one flat. The melody is written in a rhythmic style with many eighth and sixteenth notes. The second system continues the melody and includes the lyrics 'Par fin despit' written above the notes. The piece concludes with a double bar line and a repeat sign.

TENOR

Basse
danse

Musical notation for the Tenor part, consisting of three systems of a five-line staff. The first system begins with a treble clef, a common time signature, and a key signature of one flat. The melody is written in a rhythmic style with many eighth and sixteenth notes. The second and third systems continue the melody. The piece concludes with a double bar line and a repeat sign.

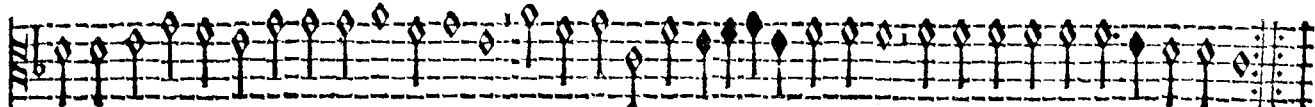
CONTRATENOR

Fo. XX III

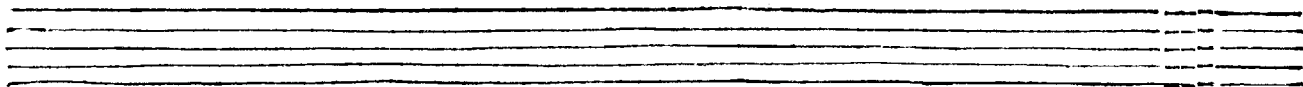
Basse
danse



A musical staff with a treble clef and a key signature of one flat. The staff contains a series of notes, primarily quarter and eighth notes, with some rests. The notes are mostly on the middle lines of the staff. The staff ends with a double bar line and a repeat sign.

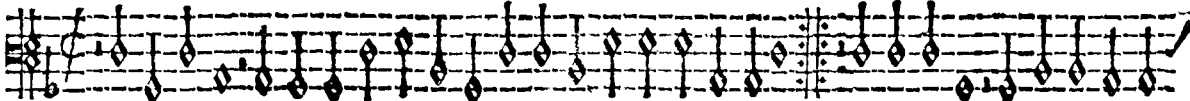


A musical staff with a treble clef and a key signature of one flat. The staff contains a series of notes, primarily quarter and eighth notes, with some rests. The notes are mostly on the middle lines of the staff. The staff ends with a double bar line and a repeat sign.

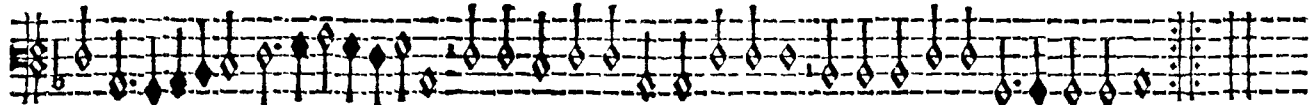


An empty musical staff with a treble clef and a key signature of one flat.

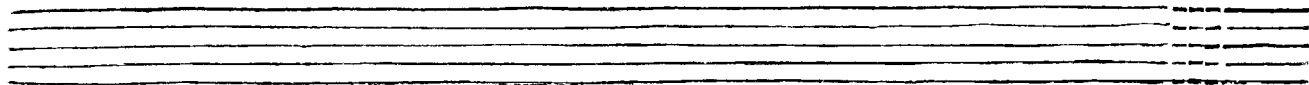
Basse
danse



A musical staff with a treble clef and a key signature of one flat. The staff contains a series of notes, primarily quarter and eighth notes, with some rests. The notes are mostly on the middle lines of the staff. The staff ends with a double bar line and a repeat sign.



A musical staff with a treble clef and a key signature of one flat. The staff contains a series of notes, primarily quarter and eighth notes, with some rests. The notes are mostly on the middle lines of the staff. The staff ends with a double bar line and a repeat sign.



An empty musical staff with a treble clef and a key signature of one flat.

SVPERIVS

Braille

Musical notation for the Soprano part, first system. It consists of a single staff with a treble clef and a key signature of one flat (B-flat). The music is written in a rhythmic style with many eighth notes. The word 'Braille' is written vertically to the left of the staff.

TENOR

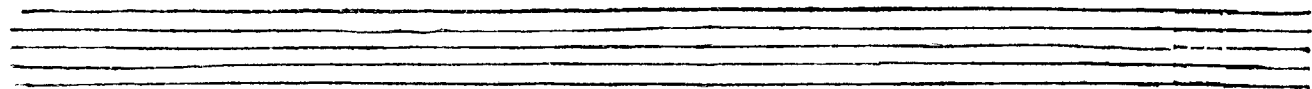
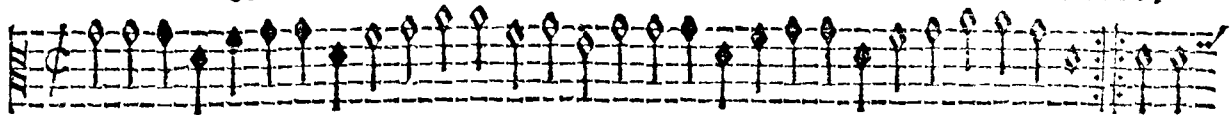
Braille

Musical notation for the Tenor part, first system. It consists of a single staff with a bass clef and a key signature of one flat (B-flat). The music is written in a rhythmic style with many eighth notes. The word 'Braille' is written vertically to the left of the staff.

CONTRATENOR

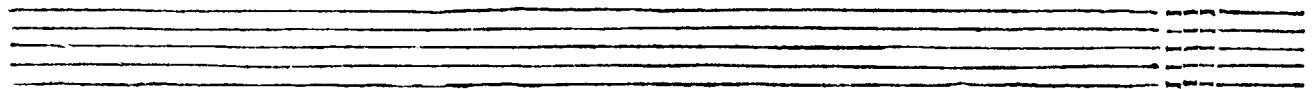
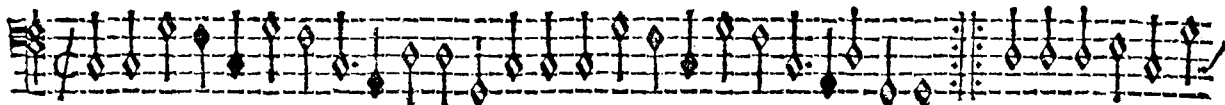
Es XXIII

Brancie



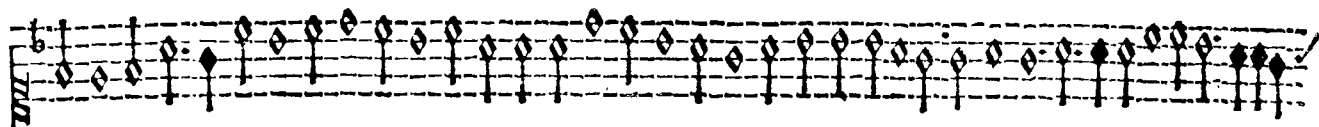
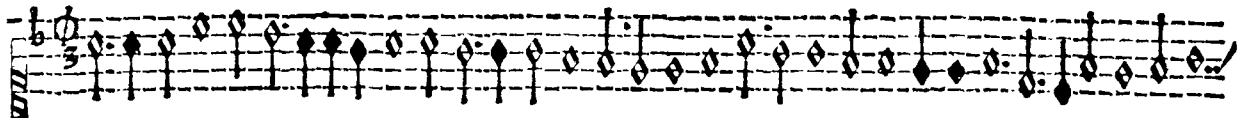
BASSVS

Brancie



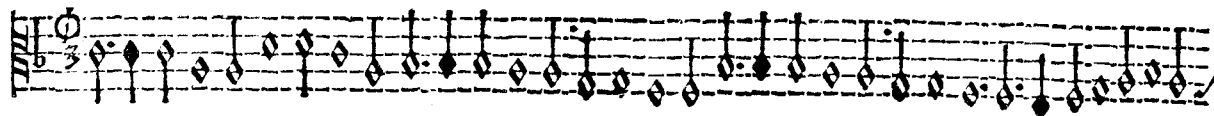
SUPERIUS

Branle
847

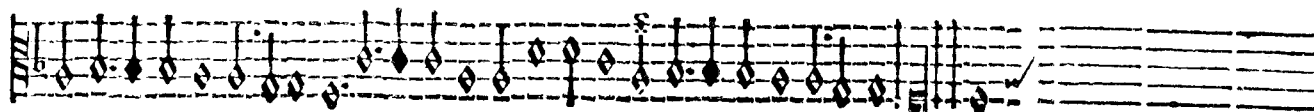
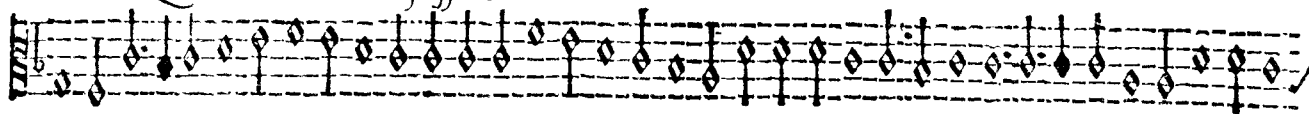


TENOR

Branle
847



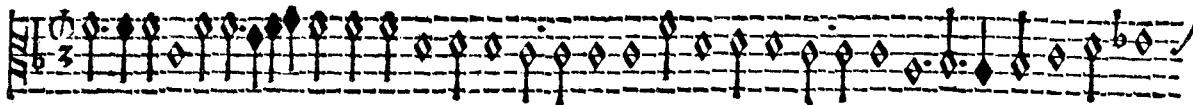
Que ie chatouille ta fossette



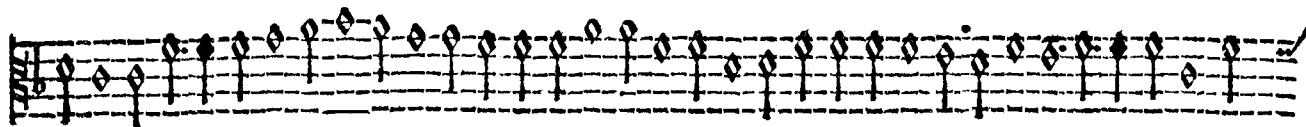
CONTRATENOR

Fo. XXV

849
Braille

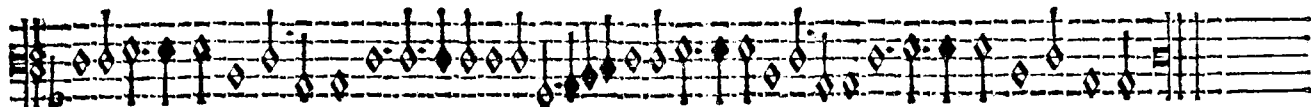
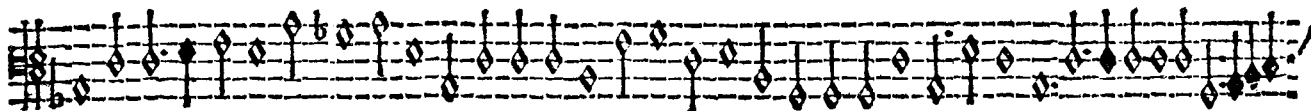
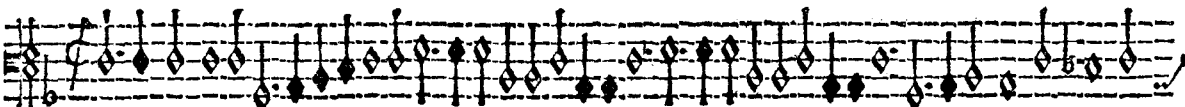


5



BASSVS

849
Braille



SVPERIVS

Braille



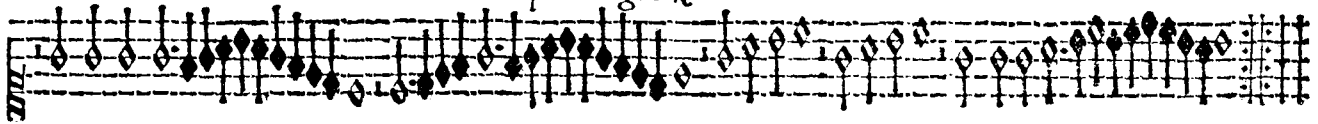
Musical notation for the Soprano part, labeled "SVPERIVS" and "Braille". It consists of a single staff with a treble clef and a key signature of one flat. The melody is written in a series of eighth and sixteenth notes.

Basse
danse

Trop de regretz



Musical notation for the Bass and Dance parts. The Bass part is on a staff with a bass clef, and the Dance part is on a staff with a treble clef. The text "Trop de regretz" is written below the Bass staff. The notation includes various rhythmic values and rests.



Musical notation for the Tenor part, consisting of a single staff with a treble clef. The melody is written in a series of eighth and sixteenth notes.

TENOR

Braille

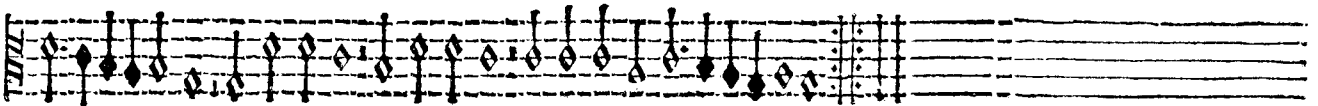


Musical notation for the Tenor part, labeled "TENOR" and "Braille". It consists of a single staff with a treble clef and a key signature of one flat. The melody is written in a series of eighth and sixteenth notes.

Basse
danse



Musical notation for the Bass and Dance parts, consisting of two staves. The Bass part is on a staff with a bass clef, and the Dance part is on a staff with a treble clef. The notation includes various rhythmic values and rests.

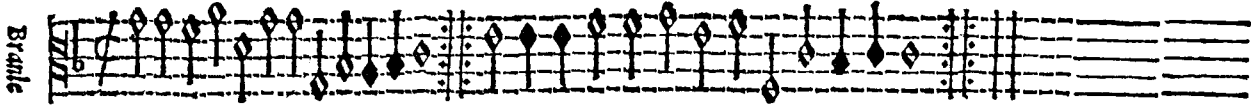


Musical notation for the Tenor part, consisting of a single staff with a treble clef. The melody is written in a series of eighth and sixteenth notes.

CONTRATENOR

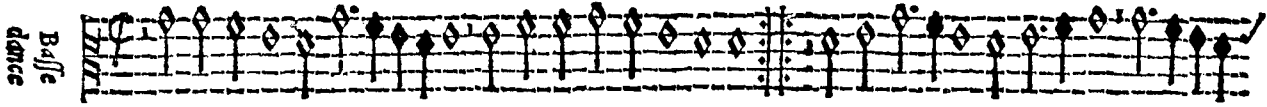
Fo XXVI

Braille

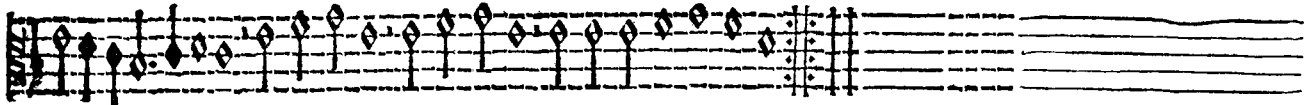


Musical notation for the Contratenor Braille part, consisting of a single staff with a treble clef and a key signature of one flat. The notation includes a series of diamond-shaped notes with stems, followed by a double bar line and a repeat sign.

Basse
danse



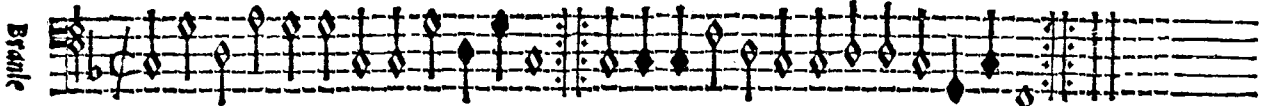
Musical notation for the Contratenor Basse danse part, consisting of a single staff with a treble clef and a key signature of one flat. The notation includes a series of diamond-shaped notes with stems, followed by a double bar line and a repeat sign.



Musical notation for the Contratenor Basses part, consisting of a single staff with a treble clef and a key signature of one flat. The notation includes a series of diamond-shaped notes with stems, followed by a double bar line and a repeat sign.

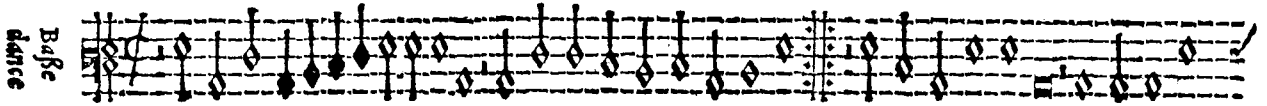
BASSVS.

Braille

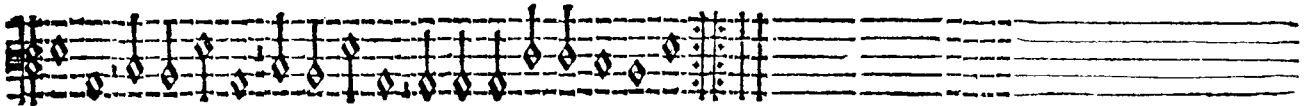


Musical notation for the Bassus Braille part, consisting of a single staff with a bass clef and a key signature of one flat. The notation includes a series of diamond-shaped notes with stems, followed by a double bar line and a repeat sign.

Basse
danse



Musical notation for the Bassus Basse danse part, consisting of a single staff with a bass clef and a key signature of one flat. The notation includes a series of diamond-shaped notes with stems, followed by a double bar line and a repeat sign.



Musical notation for the Bassus Basses part, consisting of a single staff with a bass clef and a key signature of one flat. The notation includes a series of diamond-shaped notes with stems, followed by a double bar line and a repeat sign.

SUPERIUS

Tourdion

The Soprano part is written on three staves. The first staff begins with a treble clef, a key signature of one flat (B-flat), and a common time signature (C). The music consists of a series of eighth and sixteenth notes, with some rests. The second staff continues the melodic line, and the third staff concludes it with a final cadence. The word 'Tourdion' is written vertically to the left of the first staff and to the right of the second staff.

TENOR

Tourdion

The Tenor part is written on three staves. The first staff begins with a treble clef, a key signature of one flat (B-flat), and a common time signature (C). The music consists of a series of eighth and sixteenth notes, with some rests. The second staff continues the melodic line, and the third staff concludes it with a final cadence. The word 'Tourdion' is written vertically to the left of the first staff and to the right of the second staff.

CONTRATENOR

Tourdon

BASSVS

Tourdon

SVPERIVS

BRANLE

BRANLE 849

TENOR

BRANLE

BRANLE 849

CONTRATENOR

Fo XXV III

Braille

Braille 849

BASSVS

Braille

Braille 849

SVPERIVS

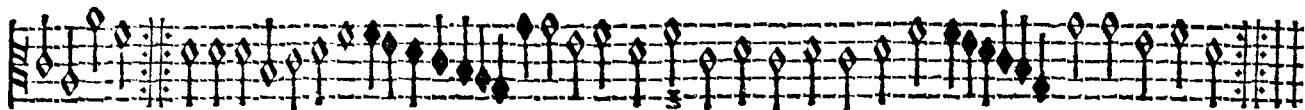
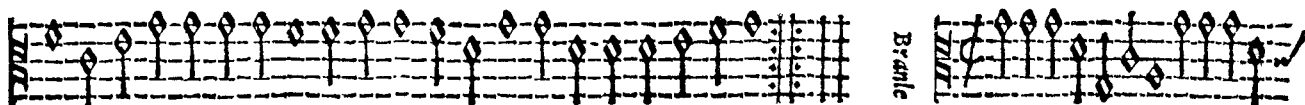
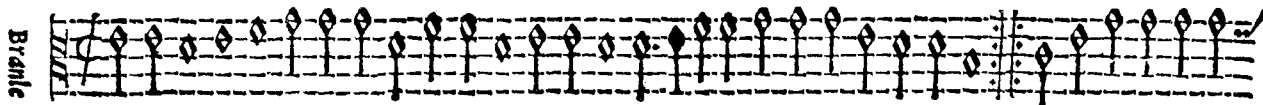
Braille

TENOR

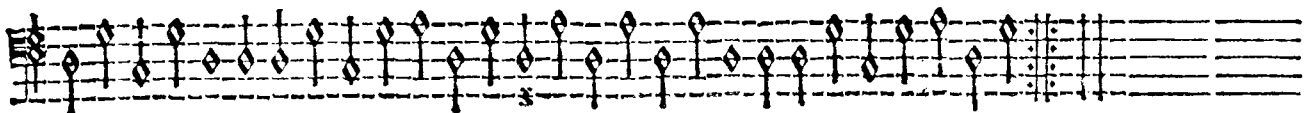
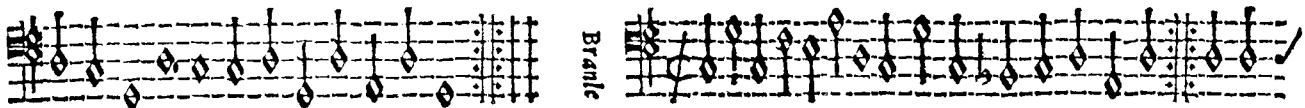
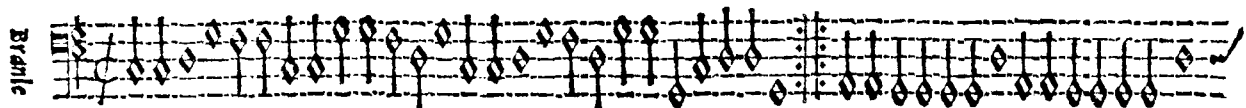
Braille

CONTRATENOR

Fo. XXIX



BASSVS



SVPERIVS

Piutane

Musical staff for Soprano part, first system. It begins with a treble clef, a key signature of one flat (B-flat), and a common time signature (C). The staff contains a series of notes, including quarter, eighth, and sixteenth notes, with some rests. A double bar line is present in the middle of the system.

Musical staff for Soprano part, second system. It continues the melody from the first system, featuring similar note values and rests. A double bar line is present in the middle of the system.

Piutane

Musical staff for Soprano part, third system. It continues the melody from the second system. A double bar line is present in the middle of the system.

Musical staff for Soprano part, fourth system. It continues the melody from the third system. A double bar line is present in the middle of the system.

TENOR

Piutane

Musical staff for Tenor part, first system. It begins with a treble clef, a key signature of one flat (B-flat), and a common time signature (C). The staff contains a series of notes, including quarter, eighth, and sixteenth notes, with some rests. A double bar line is present in the middle of the system.

Musical staff for Tenor part, second system. It continues the melody from the first system, featuring similar note values and rests. A double bar line is present in the middle of the system.

Piutane

Musical staff for Tenor part, third system. It continues the melody from the second system. A double bar line is present in the middle of the system.

Musical staff for Tenor part, fourth system. It continues the melody from the third system. A double bar line is present in the middle of the system.

CONTRATENOR

Fo XXX

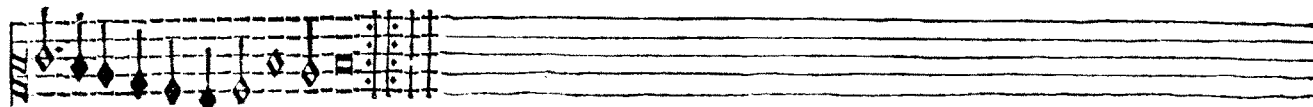
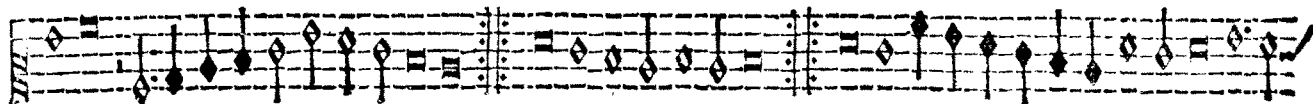
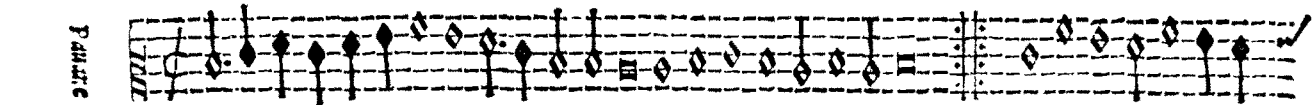
Pizzicato

BASSVS.

Pizzicato

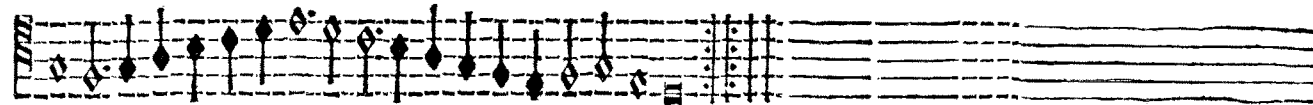
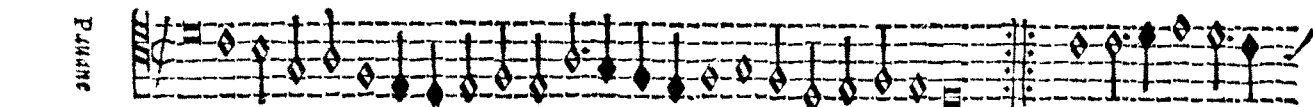
SVPERIVS

PARTITE



TENOR

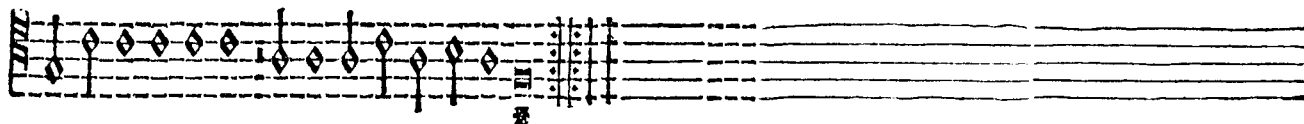
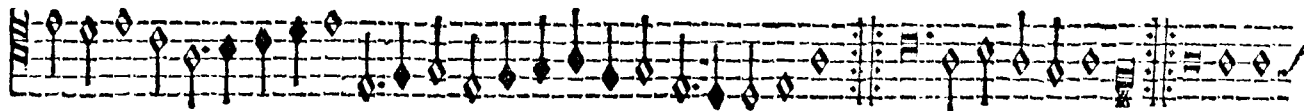
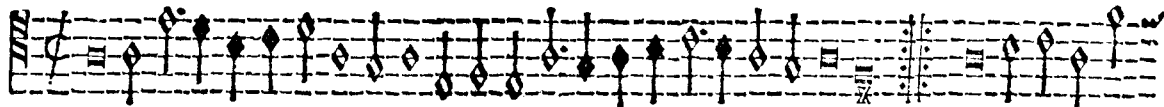
PARTITE



CONTRATENOR

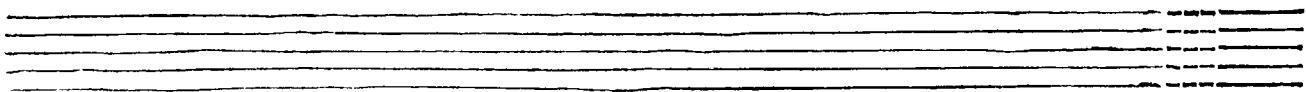
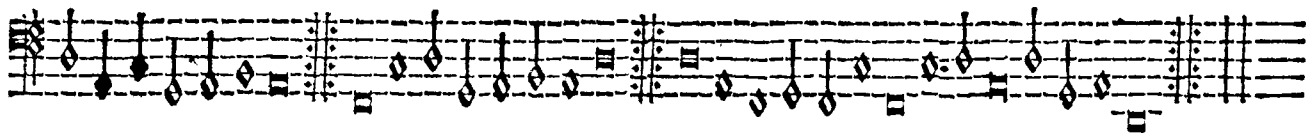
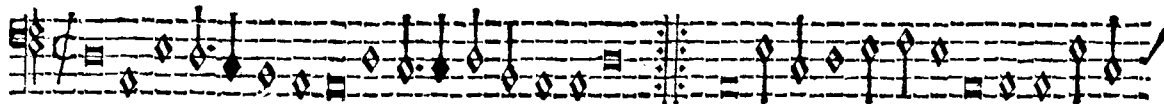
Fo. XXXI

PANDUS



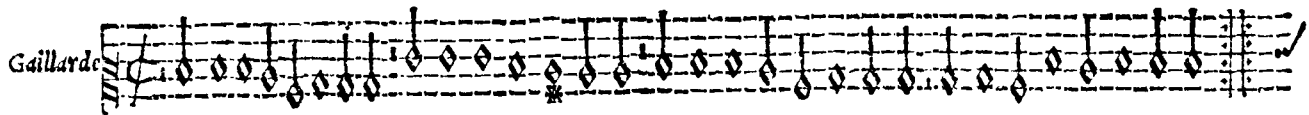
BASSVS

PANDUS

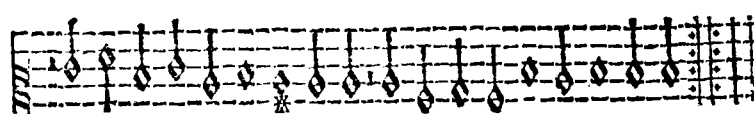


SVPERIVS

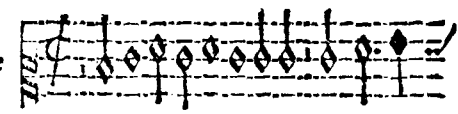
Gaillarde



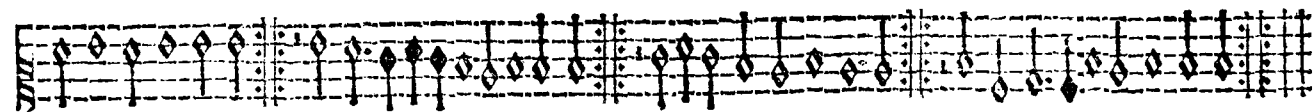
A single musical staff for the Soprano part, labeled 'Gaillarde'. It features a treble clef, a key signature of one flat (B-flat), and a 3/4 time signature. The melody consists of eighth and sixteenth notes, with a repeat sign at the end.



Gaillarde



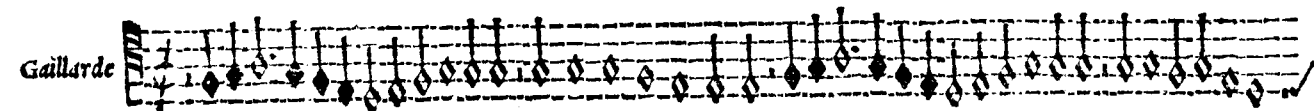
Two musical staves for the Soprano part, labeled 'Gaillarde'. The first staff continues the melody from the previous section, and the second staff concludes it with a repeat sign.



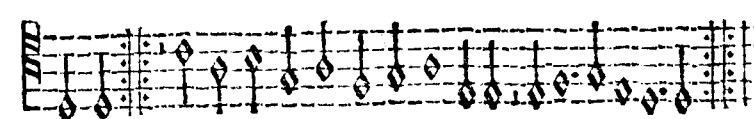
A single musical staff for the Tenor part, labeled 'Gaillarde'. It features a bass clef, a key signature of one flat (B-flat), and a 3/4 time signature. The melody consists of eighth and sixteenth notes, with a repeat sign at the end.

TENOR

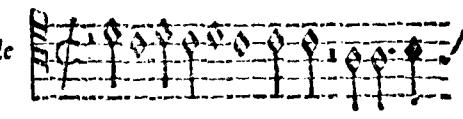
Gaillarde



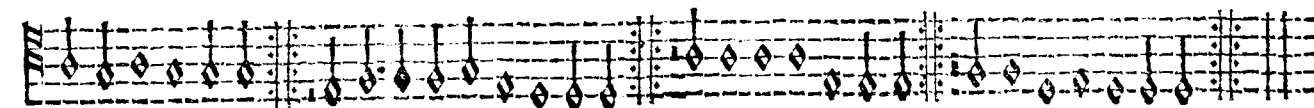
A single musical staff for the Tenor part, labeled 'Gaillarde'. It features a bass clef, a key signature of one flat (B-flat), and a 3/4 time signature. The melody consists of eighth and sixteenth notes, with a repeat sign at the end.



Gaillarde



Two musical staves for the Tenor part, labeled 'Gaillarde'. The first staff continues the melody from the previous section, and the second staff concludes it with a repeat sign.

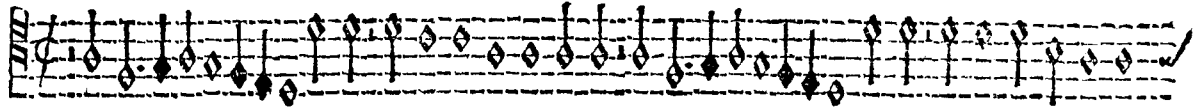


A single musical staff for the Tenor part, labeled 'Gaillarde'. It features a bass clef, a key signature of one flat (B-flat), and a 3/4 time signature. The melody consists of eighth and sixteenth notes, with a repeat sign at the end.

CONTRATENOR

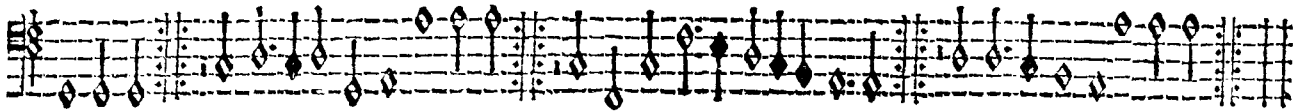
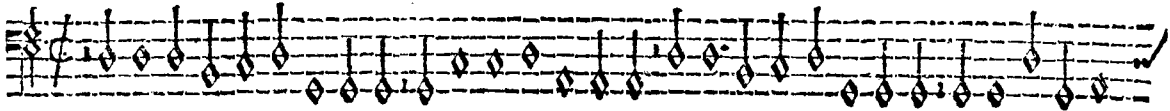
Op XXXII

Gaillarde



BASSUS

Gaillarde



SVPERIVS

The musical score for 'SVPERIVS' consists of seven staves. The first staff is a Gaillarde in treble clef with a 6/8 time signature. The second and third staves are vocal parts: Contratenor (soprano clef) and Tenor (tenor clef), both in treble clef with a 6/8 time signature. The fourth and fifth staves are Gaillarde parts in treble clef with a 6/8 time signature. The sixth staff is a vocal part for the first Bassus (bass clef) in treble clef with a 6/8 time signature. The seventh staff is a Gaillarde part in treble clef with a 6/8 time signature. The piece concludes with a double bar line and a fermata.

Gaillarde

Contratenor

Gaillarde

Tenor

Gaillarde

1. Bassus

Gaillarde

ij. Bassus

Gaillarde

Finis.