

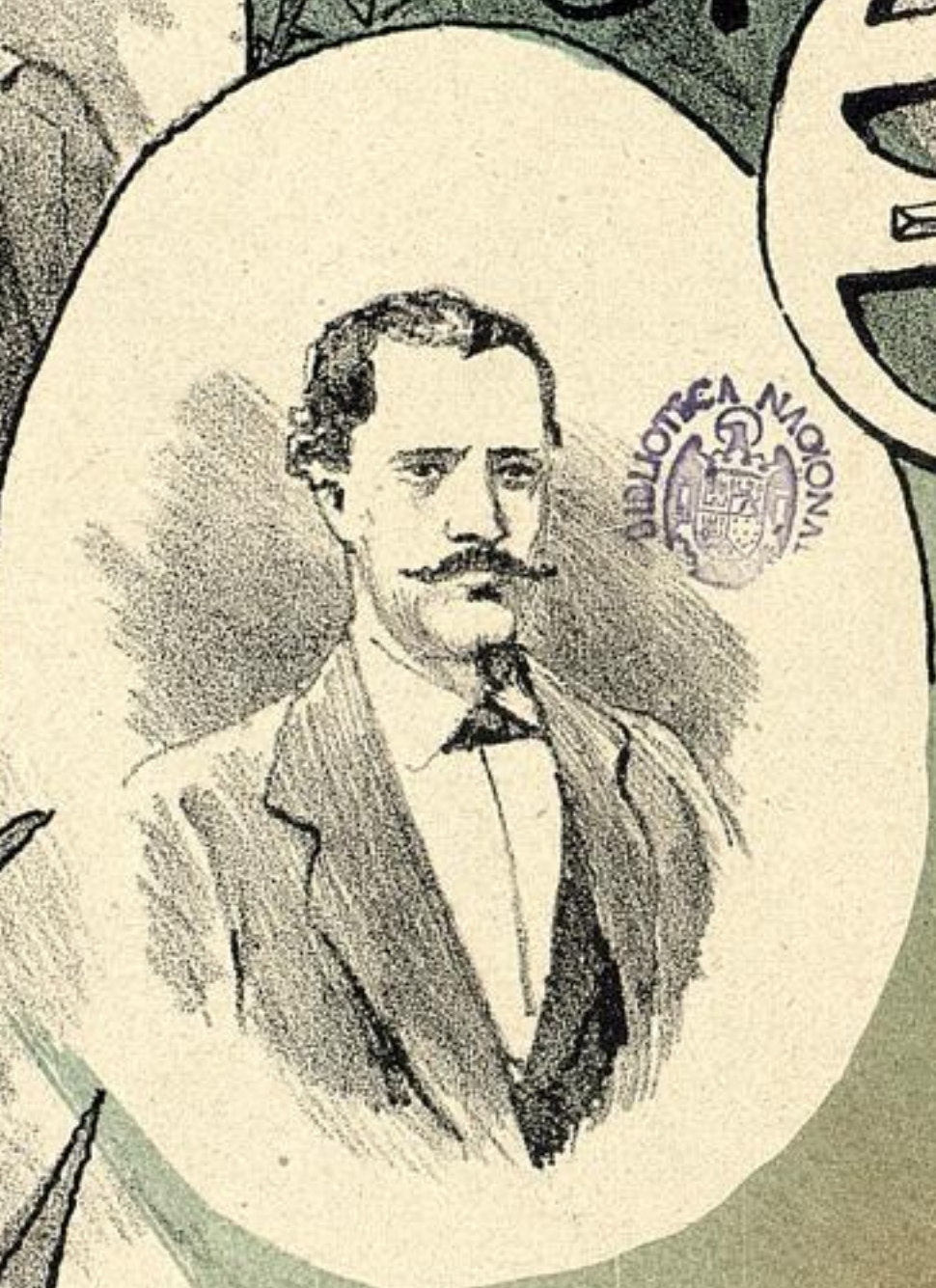
mp. 1811

mp 5
1811

1893

3513

Julian y Manuel SERRAS



LA RUBIA DE LOS LUNARES
Habanera para dos guitarras Pts 3.

UN BALLO IN MASCHERA
Fantasia para una guitarra Pts 5.

RIGOLETTO
Gran fantasia para dos guitarras Pts 9



Hijos de ANDRES VIDAL y ROGER
Aneha 35
BARCELONA

Hijos de A. Vidal y Roger



BALLO IN MASCHERA

1

FANTASIA para guitarra



por Manuel ARCAS.

Hijos de A. Vidal y Roge. Ancha, 35. Barcelona.

H. 3320. V.



First musical staff, treble clef, featuring a melodic line with eighth and sixteenth notes and a bass line with chords and rests.

Second musical staff, treble clef, featuring a melodic line with eighth notes and a bass line with chords. Includes a circled '(2)' and a dotted line labeled 'C. 8' above the staff.

Third musical staff, treble clef, featuring a continuous eighth-note melodic line and a bass line with chords.

Fourth musical staff, treble clef, featuring a continuous eighth-note melodic line and a bass line with chords.

Fifth musical staff, treble clef, featuring a continuous eighth-note melodic line and a bass line with chords. Includes a circled '(4)' below the staff.

Sixth musical staff, treble clef, featuring a continuous eighth-note melodic line and a bass line with chords. Includes a dotted line labeled 'C. 5' above the staff.

Seventh musical staff, treble clef, featuring a melodic line with eighth notes and a bass line with chords. Includes a dotted line labeled 'C 5' above the staff.

Eighth musical staff, treble clef, featuring a melodic line with eighth notes and a bass line with chords.

C. 5.....

C. 8..... 3

C. 8..... 5.....

C. 6.....



The image shows a page of musical notation, likely a score for a piece of music. It consists of eight staves of music. The notation is written in a standard musical notation style, featuring treble clefs, various note values (quarter, eighth, sixteenth notes), rests, and accidentals (sharps, flats). The music is arranged in a multi-measure rest format, with some staves containing melodic lines and others containing chords or accompaniment. A dotted line labeled 'C. 5' spans across the bottom two staves, indicating a specific measure or section. The overall appearance is that of a printed musical score page.

16832

