



Bernard Dewagtere

France, SIN LE NOBLE

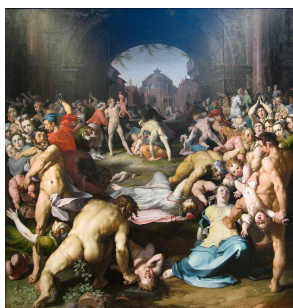
The Coventry Carol (Lullay, Thou little tiny Child) Traditional

A propos de l'artiste

Docteur en musicologie, chef d'orchestre et compositeur.
Compositions et arrangements de toutes époques, dans tous les styles ou genres musicaux et pour n'importe quelles formations instrumentales ou vocales.

Qualification : Docteur en Musicologie
Sociétaire : SACEM - Code IPI artiste : 342990
Page artiste : https://www.free-scores.com/partitions_gratuites_bernard-dewagtere.htm

A propos de la pièce



Titre : The Coventry Carol
[Lullay, Thou little tiny Child]
Compositeur : Traditional
Arrangeur : Dewagtere, Bernard
Droit d'auteur : Copyright © Bernard Dewagtere
Editeur : Dewagtere, Bernard
Instrumentation : Choeur SATB, piano ou orgue
Style : Noel

Bernard Dewagtere sur [free-scores.com](https://www.free-scores.com)

LICENCE

Cette partition nécessite une autorisation :

- pour les représentations publiques
- pour l'utilisation par les professeurs

S'acquies de cette licence sur :

<https://www.free-scores.com/licence?p=azkvPcCXBx>



- écouter l'audio
- partager votre interprétation
- commenter la partition
- s'acquies de la licence
- contacter l'artiste

Interdiction de diffusion sur d'autres sites Web.

The Coventry Carol

Lullay, Thou little tiny Child

Old English Carol (16th Century)

Arr. : Bernard Dewagtere

Piano

pp

Measures 1-6 of the piano introduction. The music is in 3/4 time, B-flat major, and begins with a piano (*pp*) dynamic. The right hand features chords and single notes, while the left hand plays a simple bass line.

Pno

Measures 7-12 of the piano accompaniment. The right hand has a melodic line with some grace notes, and the left hand provides harmonic support with chords and moving lines.

S.

13 *p*

Lul - lay, Thou lit - tle ti - ny

Pno

Measures 13-18. The vocal line (S.) begins at measure 13 with the lyrics "Lul - lay, Thou lit - tle ti - ny". The piano accompaniment (Pno) continues with a *p* dynamic. The piano part features a mix of chords and moving lines in both hands.

S.

19

Child, Bye - bye, lul - loo, lul - lay. Lul - lay, Thou

Pno

Measures 19-24. The vocal line (S.) continues with the lyrics "Child, Bye - bye, lul - loo, lul - lay. Lul - lay, Thou". The piano accompaniment (Pno) continues with a *p* dynamic, featuring a mix of chords and moving lines in both hands.

The Coventry Carol

2
25

S. lay, Thou ti - ny Child, Bye - bye, lul - loo, lul - lay.

Pno

31 *mp*

S. O sis - ters, too, how may we do For to pre - serve this

A. *mp*

A. O sis - ters, too, how may we do For to pre - serve this

Pno *mp*

37

S. day? — This poor Young - ling for whom we sing,

A. *mp*

A. day? — This poor Young - ling for whom we — sing,

Pno *mp*

The Coventry Carol

43 *mf*

S. Bye - bye, lul - loo, lul - lay. He - rood the King in his ra -

A. Bye - bye, lul - loo, lul - lay. He - rood the King in his ra -

T. He - rood the King in his ra -

B. He - rood the King in his ra -

Pno *mf*

49

S. cing char - ged he hath this day His men of

A. cing char - ged he hath this day His men of

T. cing char - ged he hath this day His men of

B. cing char - ged he hath this day His men of

Pno

The Coventry Carol

4
55

S. 
might, in his own sight, All chil - dren young to slay.

A. 
might, in his own sight, All chil - dren young to slay.

T. 
might, in his own sight, All chil - dren young to slay.

B. 
might, in his own sight, All chil - dren young to slay.

Pno 

61 *f*

S. 
Then woe is me, poor Child for Thee, And e - ver morn and

A. 
Then woe is me, poor Child for Thee, And e - ver morn and

T. 
Then woe is me, poor Child for Thee, And e - ver morn and

B. 
Then woe is me, poor Child for Thee, And e - ver morn and

Pno 

The Coventry Carol

67

S. day, _____ For Thy par - ting nor say nor sing,

A. day, _____ For Thy par - ting nor say nor _____ sing,

T. day, _____ For Thy par - ting nor say _____ nor sing,

B. day, _____ For Thy par - ting nor say _____ nor sing,

Pno

73

S. Bye - bye, lul - loo, lul - lay.

A. Bye - bye, lul - loo, lul - lay.

T. Bye - bye, lul - loo, lul - lay.

B. Bye - bye, lul - loo, - lul - - lay.

Pno

The image displays two systems of piano accompaniment for the song 'The Coventry Carol'. The first system, starting at measure 79, features a treble clef with a key signature of two flats and a common time signature. The bass clef part consists of a steady eighth-note accompaniment. The second system, starting at measure 85, includes a 'rit.' (ritardando) marking above the staff. The music concludes with a final cadence in the right hand and a fermata over the final note in the left hand.

The "Coventry Carol" is an English Christmas carol dating from the 16th century. The carol was traditionally performed in Coventry in England as part of a mystery play called The Pageant of the Shearmen and Tailors.

The play depicts the Christmas story from chapter two in the Gospel of Matthew: the carol itself refers to the Massacre of the Innocents, in which Herod ordered all male infants under the age of two in Bethlehem to be killed, and takes the form of a lullaby sung by mothers of the doomed children. (Wikipedia)