



Marcelo Torcato

Arrangeur, Compositeur, Directeur, Interprete, Editeur, Professeur

Brésil, Pauliceia

A propos de l'artiste

Il a étudié le piano, la naissance: Barueri - BRASIL. Ville qui habite: Paulicéia - BRASIL. projets Musique: GI - Groupe Instrumental; musique de piano.

Qualification:

- 1 Flute à Bec Soprano;
- 1 Flute à Bec Soprano;
- 1 Flute à Bec Contralto;
- 1 Melodica;
- 1 Mandoline;
- 1 Ukelele;
- 1 Guitare;
- 1 Guitare pedal;
- 1 Viole Caipira;
- 1 Basse;
- 1 Accordéon;
- 1 Synthétiseur;
- 1 Piano;
- 1 Batterie;
- 1 Percusion: atabaque;
- pandeiro; triângulo; ganzá;
- pandeirola.

Site Internet: <http://www.marcelotorca.com>

A propos de la pièce



Titre: Lendo e Estudando
Compositeur: Torcato, Marcelo
Arrangeur: Torcato, Marcelo
Licence: Creative Commons Licence
Editeur: Torcato, Marcelo
Instrumentation: Flûte à bec
Style: Methodes

Marcelo Torcato sur [free-scores.com](http://www.free-scores.com)

http://www.free-scores.com/partitions_gratuites_torca-marcelo.htm

- Contacter l'artiste
- Commenter cette partition
- Ajouter votre interprétation MP3
- Accès partition et écoute audio avec ce QR Code :



Cette partition ne fait pas partie du domaine public. Merci de contacter l'artiste pour toute utilisation hors du cadre privé.

Marcelo Morales Torcato

Lendo e Estudando

1ª. Edição

Paulicéia
Marcelo Morales Torcato
2008

www.marcelotorca.com
www.marcelotorca.com/audios.php
www.marcelotorca.palcomp3.com.br
<http://radiocelo.blogspot.com>

Índice.

Claves	página 04
Pauta	página 04
Notas na Clave de Sol	página 05
Notas na Clave de Fá	página 06
Escalas	página 07
Exercícios	página 08
Tabela de Acordes	10
Notas nos Instrumentos	11

Claves.

Neste estudo veremos duas claves: Clave de Sol e Clave de Fá. Elas servem para dar nome e altura as notas. A altura é o som, mais grave ou mais agudo, assim, geralmente a Clave de Sol é utilizado para sons médios e agudos, e a Clave de Fá para os sons médios e graves.

CLAVE DE SOL.

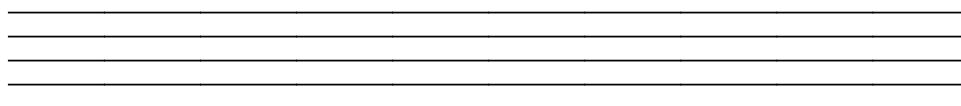


CLAVE DE FÁ.



Pauta.

Um conjunto de cinco linhas com a mesma distância entre si, serve para escrever as notas e claves.

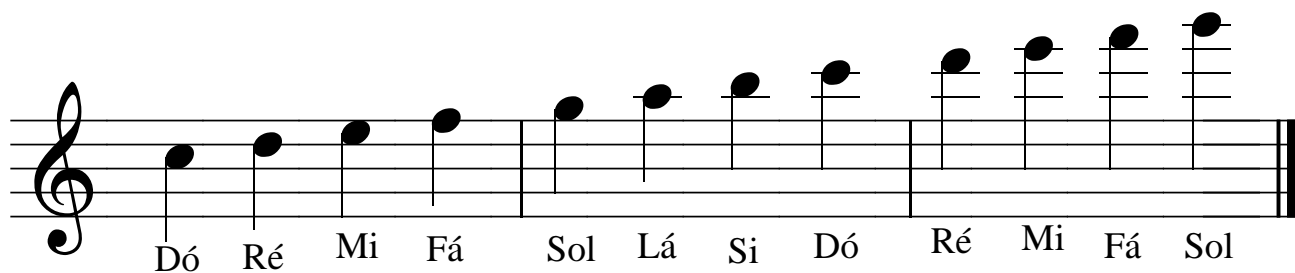


Mi Fá Sol Lá Si Dó Ré Mi Fá Sol Lá Si



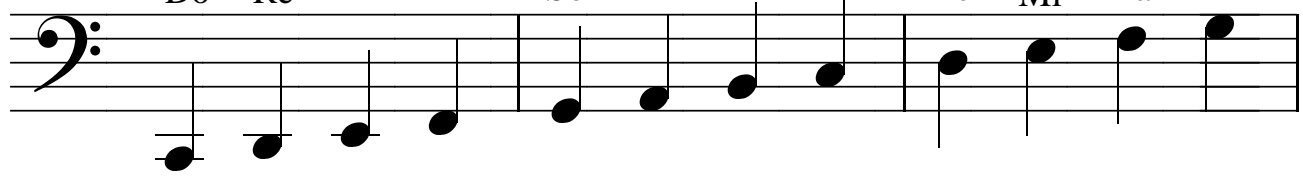
A musical staff in treble clef showing a sequence of notes. The notes are: Mi (F4), Fá (F4), Sol (F4), Lá (F4), Si (F4), Dó (G4), Ré (G4), Mi (G4), Fá (A4), Sol (A4), Lá (A4), Si (A4). The notes are written as quarter notes with stems pointing down.

Dó Ré Mi Fá Sol Lá Si Dó Ré Mi Fá Sol



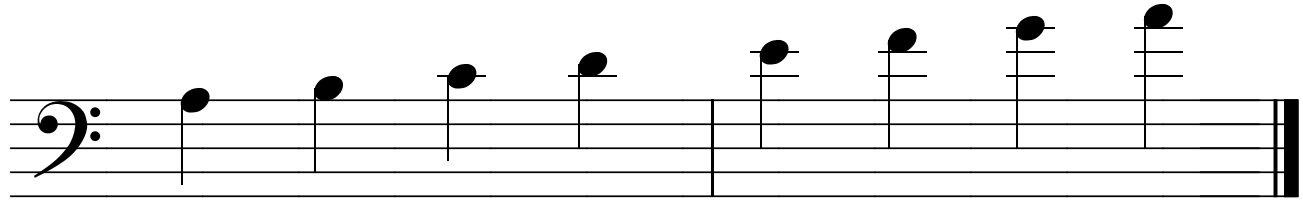
A musical staff in treble clef showing a sequence of notes. The notes are: Dó (G4), Ré (G4), Mi (G4), Fá (A4), Sol (A4), Lá (A4), Si (A4), Dó (B4), Ré (B4), Mi (B4), Fá (C5), Sol (C5). The notes are written as quarter notes with stems pointing up. The staff ends with a double bar line.

Dó Ré Mi Fá Sol Lá Si Dó Ré Mi Fá Sol



A musical staff with a bass clef. It contains 12 notes, each with a vertical stem and a solid black dot. The notes are positioned on the following lines of the staff: 1st line (Dó), 2nd line (Ré), 3rd line (Mi), 4th line (Fá), 5th line (Sol), 1st space (Lá), 2nd space (Si), 3rd space (Dó), 4th space (Ré), 5th space (Mi), 6th space (Fá), and 7th space (Sol).

Lá Si Dó Ré Mi Fá Sol Lá

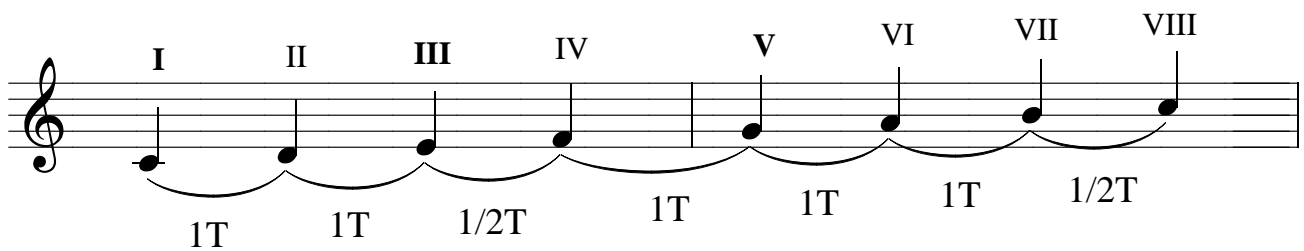


A musical staff with a bass clef. It contains 8 notes, each with a vertical stem and a solid black dot. The notes are positioned on the following lines of the staff: 1st space (Lá), 2nd space (Si), 3rd space (Dó), 4th space (Ré), 5th space (Mi), 6th space (Fá), 7th space (Sol), and 8th space (Lá). The staff ends with a double bar line.

Escalas

Escala é uma sucessão de notas que não se repetem. Vamos estudar a Escala Maior e a Escala menor. Para Contarmos os intervalos, utilizamos o tom e semitom, onde o semitom é a menor distância entre duas notas e tom é a soma de dois semitons.

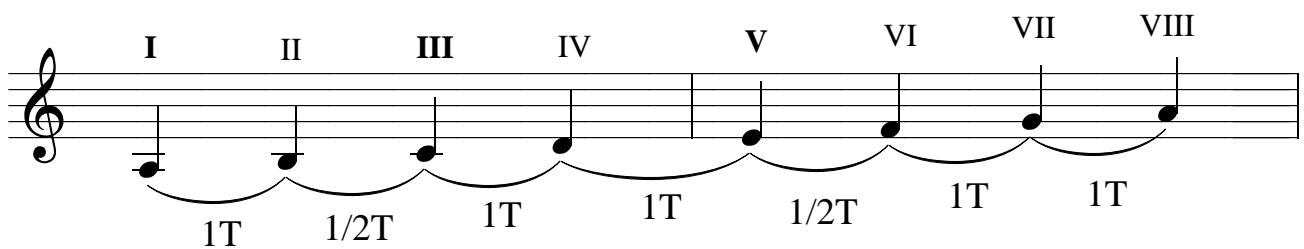
Dó Maior



I II III IV V VI VII VIII

1T 1T 1/2T 1T 1T 1T 1/2T

Lá menor

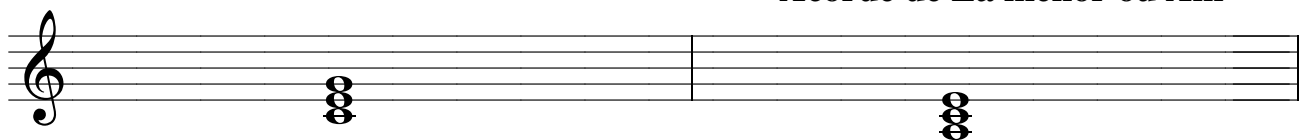


I II III IV V VI VII VIII

1T 1/2T 1T 1T 1/2T 1T 1T

Acorde de Dó Maior ou C

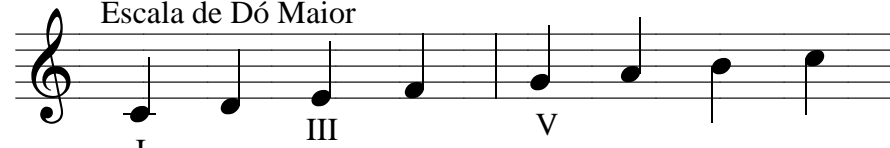
Acorde de Lá menor ou Am



Exercícios

Faça as escalas e monte os acordes.

Escala de Dó Maior

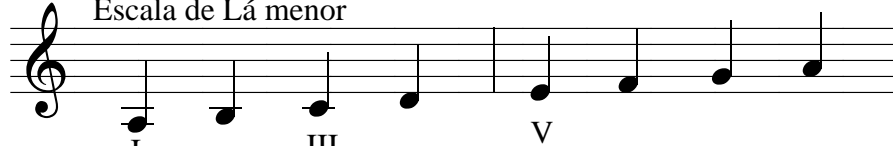


I III V

Acorde de Dó Maior C

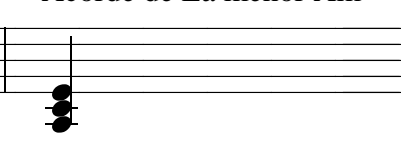


Escala de Lá menor

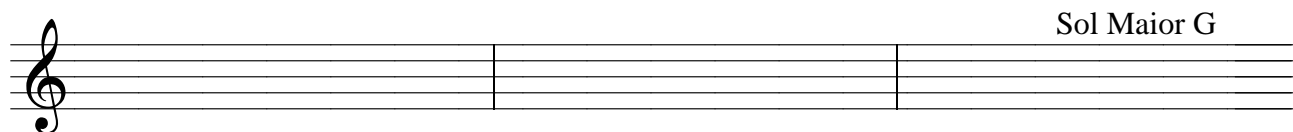


I III V

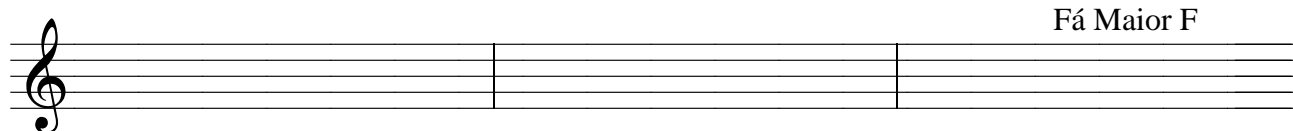
Acorde de Lá menor Am



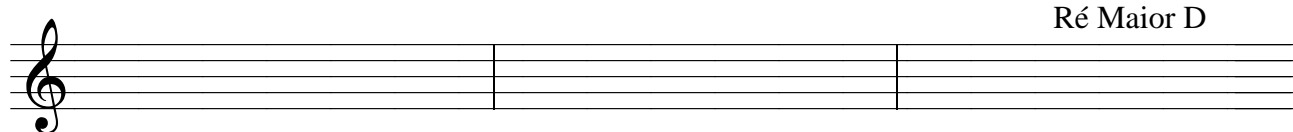
Sol Maior G



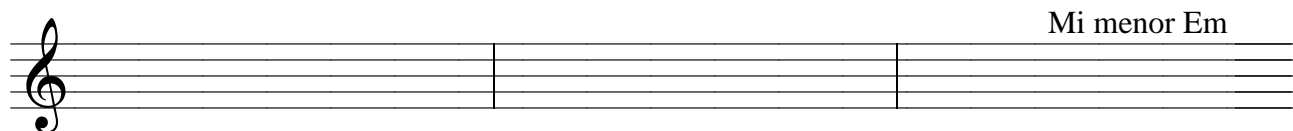
Fá Maior F



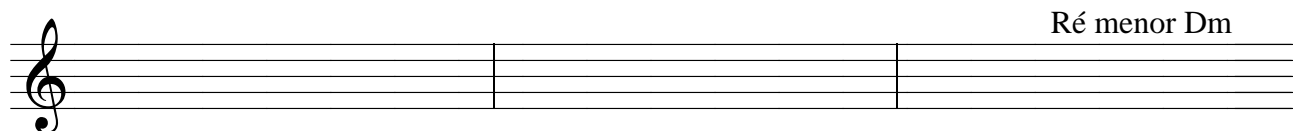
Ré Maior D



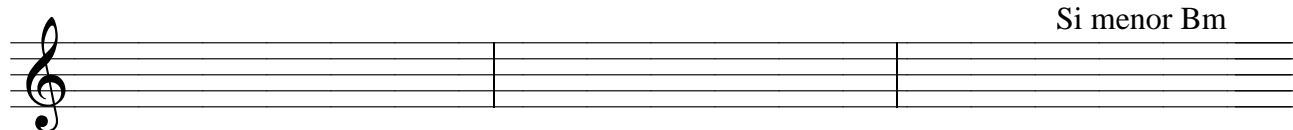
Mi menor Em



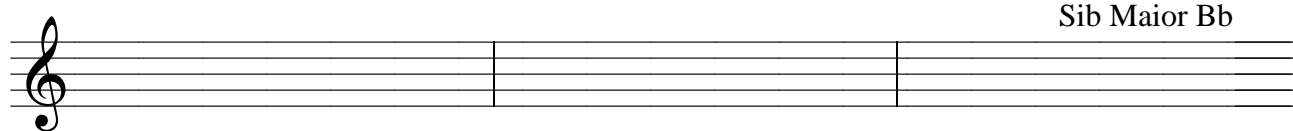
Ré menor Dm



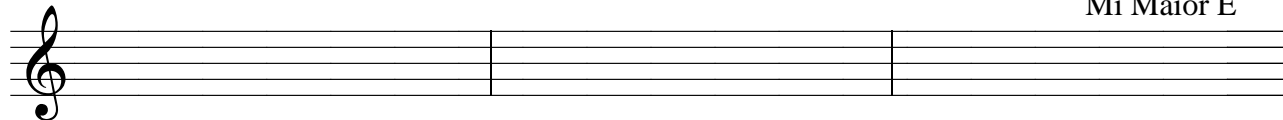
Si menor Bm



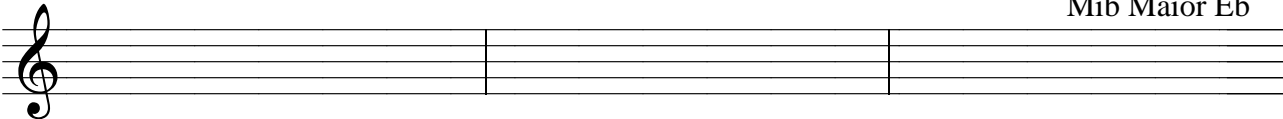
Sib Maior Bb



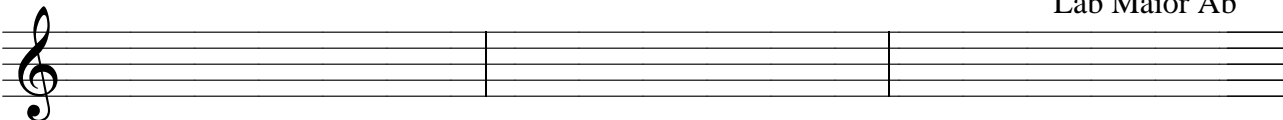
Mi Maior E



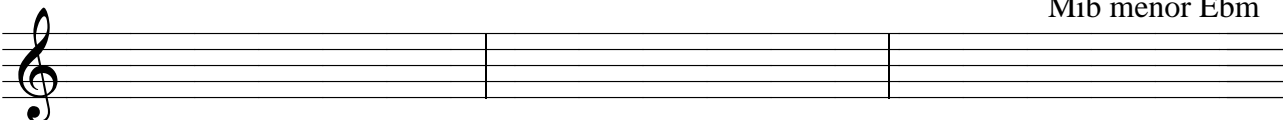
Mib Maior Eb



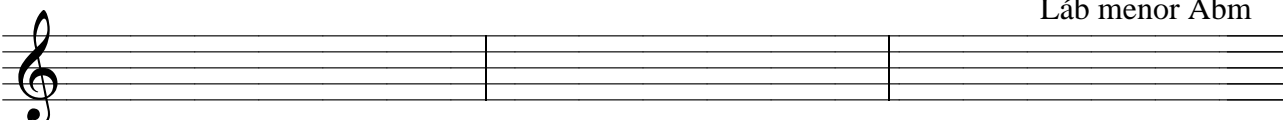
Láb Maior Ab



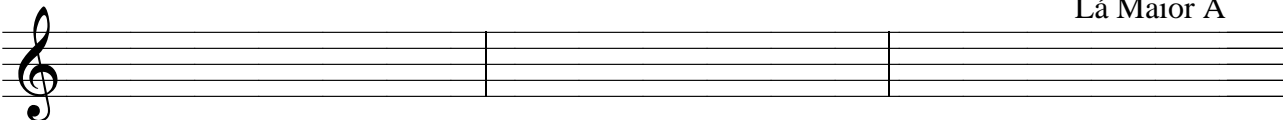
Mib menor Ebm



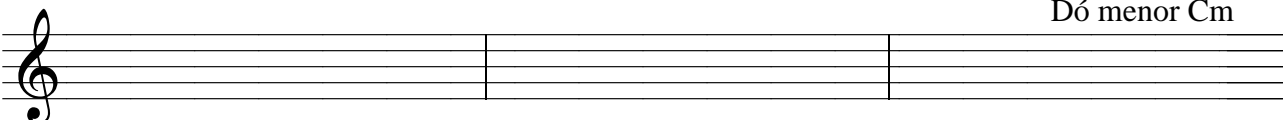
Láb menor Abm



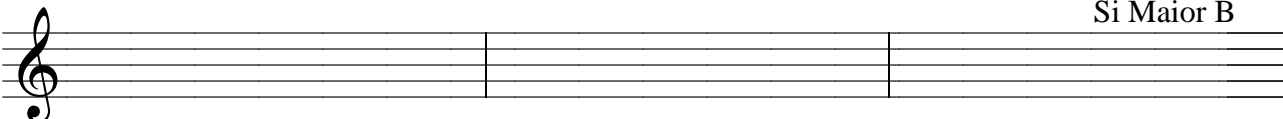
Lá Maior A



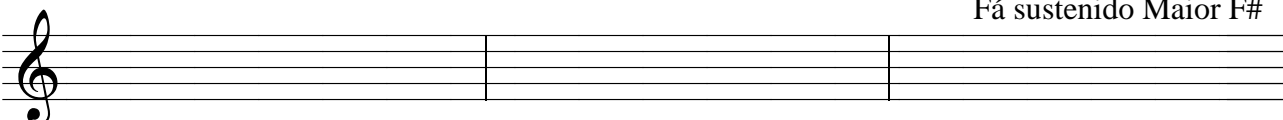
Dó menor Cm



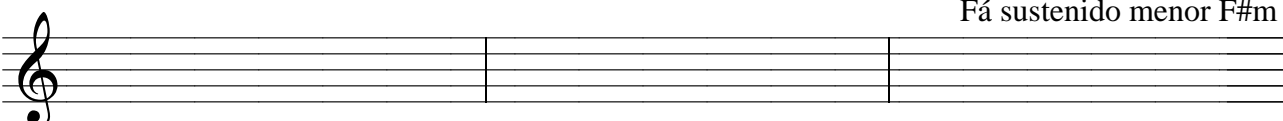
Si Maior B



Fá sostenido Maior F#



Fá sostenido menor F#m



I		III	V	7	7M
dó	dó# réb	mi	fá# solb	sol# láb	lá# sib
dó# réb	ré# mib	fá	sol	lá	si
ré	mi	fá# solb	sol# láb	lá# sib	dó# réb
ré# mib	fá	sol	lá	si	dó# réb
mi	fá# solb	sol# láb	sol	dó# réb	ré# mib
fá	sol	lá	si	dó	mi
fá# solb	sol# láb	lá# sib	dó# réb	ré	fá
sol	lá# sib	si	dó	mi	fá# solb
sol# láb	lá	dó	ré# mib	fá	sol
lá	si	dó# réb	mi	sol	sol# láb
lá# sib	dó	ré	fá	sol# láb	lá
si	dó# réb	mi	fá# solb	sol# láb	lá# sib
dó	dó# réb	mi	sol	lá# sib	si

Acordes Maiores: I, III, V. Acordes menores: I, IIIb, V.

Acordes Aumentados: I, III, V#. Acordes diminutos: I, IIIb, Vb.

10	9	8	7	6	5	4	3	2	1	
dó	si		lá		sol		fá	mi		ré
fá	mi		ré		dó	si		lá		sol
lá		sol		fá	mi		ré		dó	si
dó	si		lá		sol		fá	mi		ré

Cavaquinho

10	9	8	7	6	5	4	3	2	1	
fá	mi		ré		dó	si		lá		sol
dó	si		lá		sol		fá	mi		ré
sol		fá	mi		ré		dó	si		lá
ré		dó	si		lá		sol		fá	mi

Bandolim

10	9	8	7	6	5	4	3	2	1	
ré		dó	si		lá		sol		fá	mi
sol		fá	mi		ré		dó	si		lá
dó	si		lá		sol		fá	mi		ré
fá	mi		ré		dó	si		lá		sol
lá		sol		fá	mi		ré		dó	si
ré		dó	si		lá		sol		fá	mi

Guitarra/ Violão

10	9	8	7	6	5	4	3	2	1	
ré		dó	si		lá		sol		fá	mi
sol		fá	mi		ré		dó	si		lá
dó	si		lá		sol		fá	mi		ré
fá	mi		ré		dó	si		lá		sol
lá		sol		fá	mi		ré		dó	si
ré		dó	si		lá		sol		fá	mi

Baixo

10	9	8	7	6	5	4	3	2	1	
sol		fá	mi		ré		dó	si		lá
dó	si		lá		sol		fá	mi		ré
mi		ré		dó	si		lá		sol	fá#
sol		fá	mi		ré		dó	si		lá
dó	si		lá		sol		fá	mi		ré

Viola Caipira
afinação Cebolão Ré

dó	ré	mi	fá	sol	lá	si	dó	ré	mi	fá

Teclado
Piano
Escala
Acordeão
Celesta

dó	ré	mi	fá	sol	lá	si	dó	ré	mi	fá

Vibrafone
Xilofone
Metalofone