



für das
Piano-Forte
 von
JOH. STRAUSS.

14^{te} Lieferung der Tänze. — Eigentum der Verleger.

N^o 2972.

Pr. - 30 x C.M.

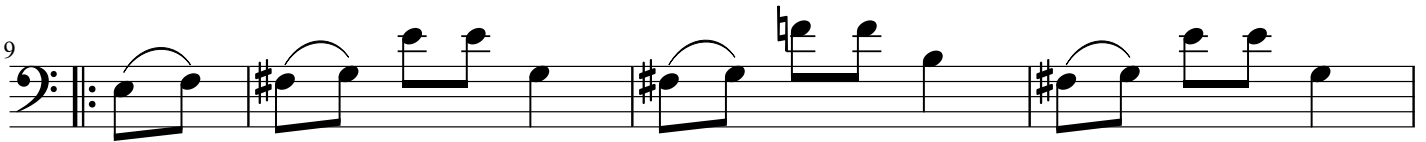
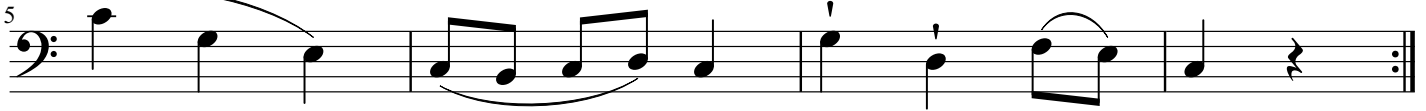
WIEN,
bei Ant. Diabelli und Comp.
Groben N^o 1133.

Champagner Walzer

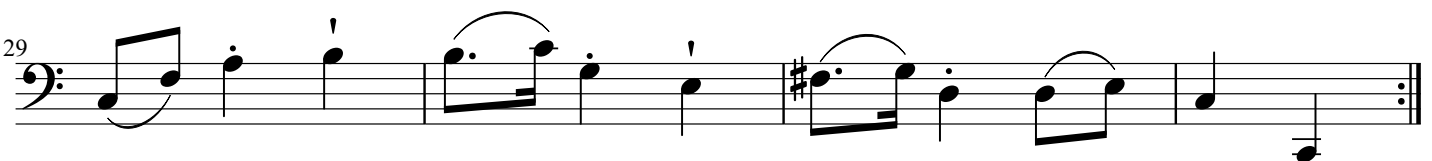
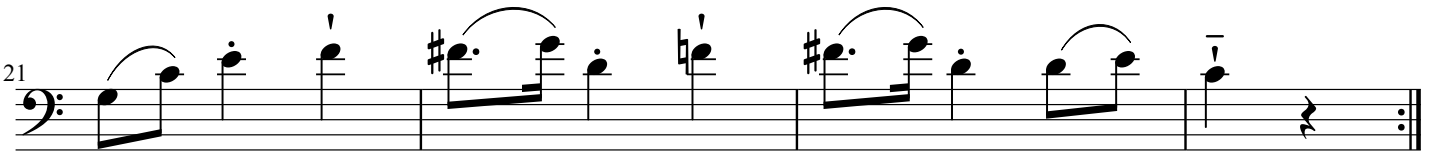
Walzer 1 & 2

Strauss

#1



#2



Champagner Walzer

Walzer 4 & 5

Strauss

#4

#5

tr

Champagner Walzer

Trio

Strauss

1

5

9

13

17

21

Champagner Walzer

Walzer 6

Strauss

Measures 1-4 of the bass line. The key signature has one sharp (F#) and the time signature is 3/4. The music features a sequence of eighth notes with accents, starting with a double bar line and repeat sign.

Measures 5-8 of the bass line. Measure 5 is marked with a '5' above the staff. The music continues with eighth notes and accents, ending with a double bar line and repeat sign.

Measures 9-12 of the bass line. Measure 9 is marked with a '9' above the staff. The music continues with eighth notes and accents, ending with a double bar line and repeat sign.

Measures 13-16 of the bass line. Measure 13 is marked with a '13' above the staff. The music continues with eighth notes and accents, ending with a double bar line and repeat sign.

Measures 17-20 of the bass line. Measure 17 is marked with a '17' above the staff. The music continues with eighth notes and accents, ending with a double bar line and repeat sign.

Measures 21-24 of the bass line. Measure 21 is marked with a '21' above the staff. The music continues with eighth notes and accents, ending with a double bar line and repeat sign.

Stay Tuned For These Anoucements



**This Message From
Surely Sale
Walawala, Washington**

Champagner Waltz

Coda

Strauss

