



Richard Kearns

Ireland, Ballybofey

Vltava - Ma Vlast Smetana, Bedrich

About the artist

Due to loss of use of hands I will be unable to transpose, arrange or otherwise modify my music in here. Further compositions will be very very slow in appearing here.....Thanks for all the support.

Teachers and students may use my music and arrangements to study and practice without further adieu.....All public performances must seek permission first.

THANKS FOR THE DONATIONS.

They keep me going.

Artist page : <https://www.free-scores.com/Download-PDF-Sheet-Music-guiriel.htm>

About the piece



Title: Vltava - Ma Vlast
Composer: Smetana, Bedrich
Arranger: Kearns, Richard
Copyright: Richard Kearns © All rights reserved
Publisher: Kearns, Richard
Instrumentation: Woodwind quintet : Flute, Clarinet, Oboe, Horn, Bassoon
Style: Classical
Comment: Timing and key make this difficult

Richard Kearns on [free-scores.com](https://www.free-scores.com)



This work is not Public Domain. You must contact the artist for any use outside the private area.



- listen to the audio
- share your interpretation
- comment
- contact the artist

Ma Vlast

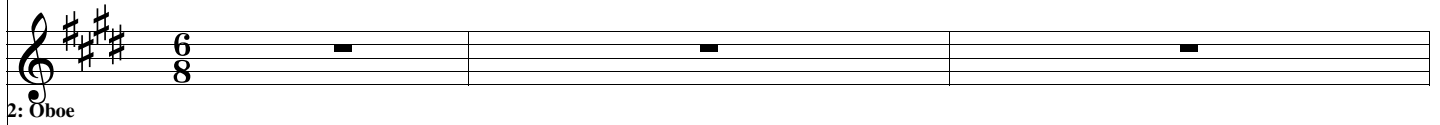
Bedrich Smetana
Arranged by Richard Kearns © 2010

1



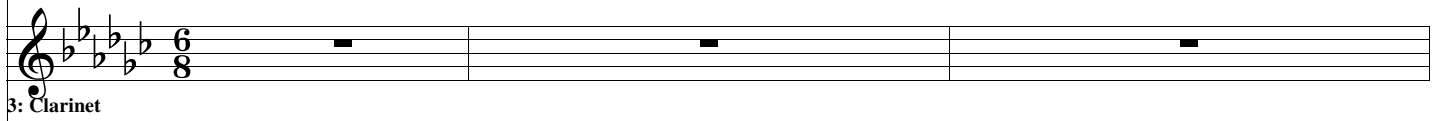
1: Flute

Musical staff for Flute 1, showing a treble clef, key signature of three sharps (F#, C#, G#), and a 6/8 time signature. The staff contains a whole rest in the first measure, followed by eighth-note patterns in the second and third measures.



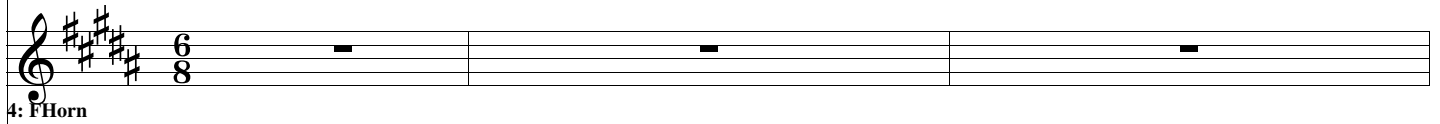
2: Oboe

Musical staff for Oboe 2, showing a treble clef, key signature of three sharps (F#, C#, G#), and a 6/8 time signature. The staff contains whole rests in all three measures.



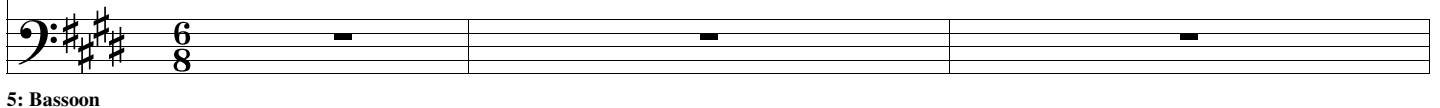
3: Clarinet

Musical staff for Clarinet 3, showing a treble clef, key signature of three flats (Bb, Eb, Ab), and a 6/8 time signature. The staff contains whole rests in all three measures.



4: FHorn

Musical staff for F Horn 4, showing a treble clef, key signature of three sharps (F#, C#, G#), and a 6/8 time signature. The staff contains whole rests in all three measures.



5: Bassoon

Musical staff for Bassoon 5, showing a bass clef, key signature of three sharps (F#, C#, G#), and a 6/8 time signature. The staff contains whole rests in all three measures.

4

1: Flute

2: Oboe

3: Clarinet

4: F Horn

5: Bassoon

6

1: Flute

2: Oboe

3: Clarinet

4: F Horn

5: Bassoon

12

1: Flute

2: Oboe

3: Clarinet

4: F Horn

5: Bassoon

14

1: Flute

2: Oboe

3: Clarinet

4: F Horn

5: Bassoon

16

1: Flute

Musical staff for Flute 1, measures 16-19. The staff is in treble clef with a key signature of three sharps (F#, C#, G#). The melody consists of eighth and quarter notes, with some beamed sixteenth notes.

2: Oboe

Musical staff for Oboe 2, measures 16-19. The staff is in treble clef with a key signature of three sharps (F#, C#, G#). The staff contains rests for all four measures.

3: Clarinet

Musical staff for Clarinet 3, measures 16-19. The staff is in treble clef with a key signature of three flats (Bb, Eb, Ab). The melody consists of eighth and quarter notes, with some beamed sixteenth notes.

4: F Horn

Musical staff for F Horn 4, measures 16-19. The staff is in treble clef with a key signature of three sharps (F#, C#, G#). The staff contains rests for all four measures.

5: Bassoon

Musical staff for Bassoon 5, measures 16-19. The staff is in bass clef with a key signature of three sharps (F#, C#, G#). The staff contains rests for all four measures.

18

1: Flute

Musical staff for Flute 1, measures 18-21. The staff is in treble clef with a key signature of three sharps (F#, C#, G#). The melody consists of eighth and quarter notes, with some beamed sixteenth notes.

2: Oboe

Musical staff for Oboe 2, measures 18-21. The staff is in treble clef with a key signature of three sharps (F#, C#, G#). The staff contains rests for all four measures.

3: Clarinet

Musical staff for Clarinet 3, measures 18-21. The staff is in treble clef with a key signature of three flats (Bb, Eb, Ab). The melody consists of eighth and quarter notes, with some beamed sixteenth notes.

4: F Horn

Musical staff for F Horn 4, measures 18-21. The staff is in treble clef with a key signature of three sharps (F#, C#, G#). The staff contains rests for all four measures.

5: Bassoon

Musical staff for Bassoon 5, measures 18-21. The staff is in bass clef with a key signature of three sharps (F#, C#, G#). The staff contains rests for all four measures.

5: Bassoon

20

1: Flute

2: Oboe

3: Clarinet

4: F Horn

5: Bassoon

22

1: Flute

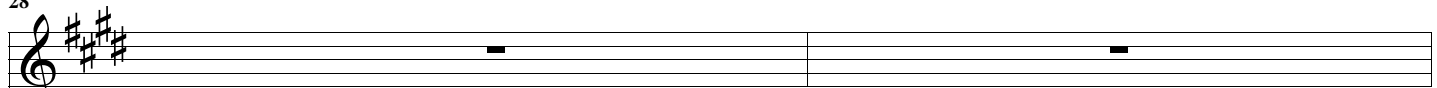
2: Oboe

3: Clarinet

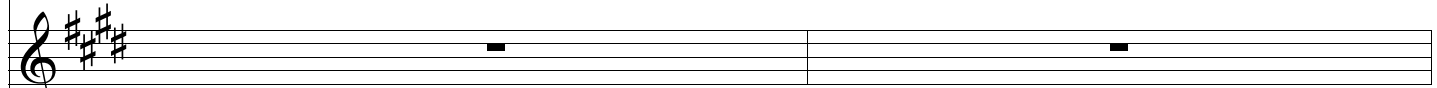
4: F Horn

5: Bassoon

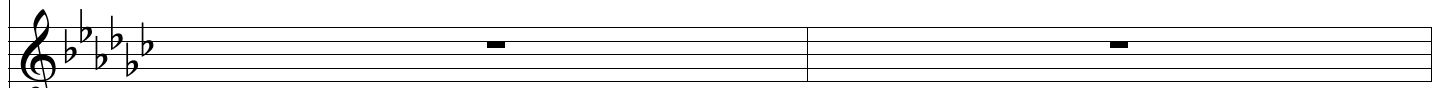
28



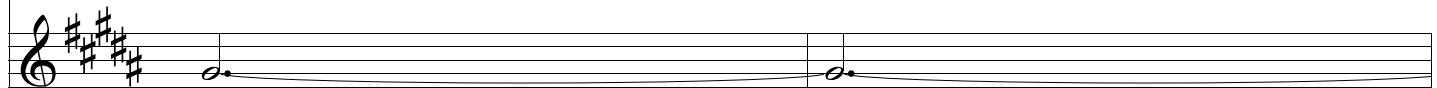
1: Flute



2: Oboe



3: Clarinet

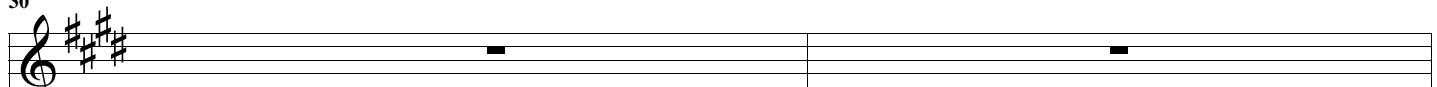


4: F Horn

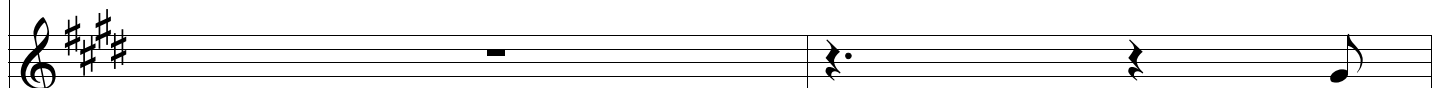


5: Bassoon

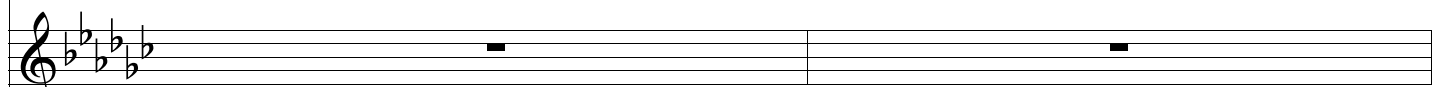
30



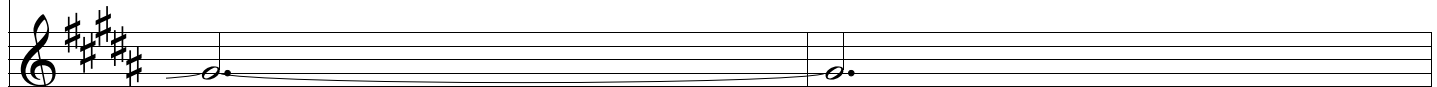
1: Flute



2: Oboe



3: Clarinet



4: F Horn



5: Bassoon

32

1: Flute

1: Flute

2: Oboe

2: Oboe

3: Clarinet

3: Clarinet

4: F Horn

4: F Horn

5: Bassoon

5: Bassoon

34

1: Flute

1: Flute

2: Oboe

2: Oboe

3: Clarinet

3: Clarinet

4: F Horn

4: F Horn

5: Bassoon

5: Bassoon

36

1: Flute

2: Oboe

3: Clarinet

4: F Horn

5: Bassoon

38

1: Flute

2: Oboe

3: Clarinet

4: F Horn

5: Bassoon

40

1: Flute

2: Oboe

3: Clarinet

4: F Horn

5: Bassoon

42

1: Flute

2: Oboe

3: Clarinet

4: F Horn

5: Bassoon

48

1: Flute

2: Oboe

3: Clarinet

4: F Horn

5: Bassoon

50

1: Flute

2: Oboe

3: Clarinet

4: F Horn

5: Bassoon

52

1: Flute

Musical staff for Flute 1, measures 52-53. The staff is in treble clef with a key signature of three sharps (F#, C#, G#). The melody consists of quarter notes: G5, A5, B5, A5, G5, F#5, E5, D5.

2: Oboe

Musical staff for Oboe 2, measures 52-53. The staff is in treble clef with a key signature of three sharps (F#, C#, G#). The melody consists of quarter notes: G5, A5, B5, A5, G5, F#5, E5, D5.

3: Clarinet

Musical staff for Clarinet 3, measures 52-53. The staff is in treble clef with a key signature of three flats (Bb, Eb, Ab). The melody consists of eighth notes: G4, A4, B4, A4, G4, F#4, E4, D4.

4: F Horn

Musical staff for F Horn 4, measures 52-53. The staff is in treble clef with a key signature of three sharps (F#, C#, G#). The melody consists of quarter notes: G5, A5, B5, A5, G5, F#5, E5, D5.

5: Bassoon

Musical staff for Bassoon 5, measures 52-53. The staff is in bass clef with a key signature of three sharps (F#, C#, G#). The melody consists of eighth notes: G3, A3, B3, A3, G3, F#3, E3, D3.

54

1: Flute

Musical staff for Flute 1, measures 54-55. The staff is in treble clef with a key signature of three sharps (F#, C#, G#). The melody consists of quarter notes: G5, A5, B5, A5, G5, F#5, E5, D5.

2: Oboe

Musical staff for Oboe 2, measures 54-55. The staff is in treble clef with a key signature of three sharps (F#, C#, G#). The melody consists of quarter notes: G5, A5, B5, A5, G5, F#5, E5, D5.

3: Clarinet

Musical staff for Clarinet 3, measures 54-55. The staff is in treble clef with a key signature of three flats (Bb, Eb, Ab). The melody consists of eighth notes: G4, A4, B4, A4, G4, F#4, E4, D4.

4: F Horn

Musical staff for F Horn 4, measures 54-55. The staff is in treble clef with a key signature of three sharps (F#, C#, G#). The melody consists of quarter notes: G5, A5, B5, A5, G5, F#5, E5, D5.

5: Bassoon

Musical staff for Bassoon 5, measures 54-55. The staff is in bass clef with a key signature of three sharps (F#, C#, G#). The melody consists of eighth notes: G3, A3, B3, A3, G3, F#3, E3, D3.

56

1: Flute

Musical staff for Flute 1, measures 56-57. The staff is in treble clef with a key signature of three sharps (F#, C#, G#). The melody consists of a dotted quarter note, an eighth note, a quarter note, a half note, a quarter rest, and an eighth note.

2: Oboe

Musical staff for Oboe 2, measures 56-57. The staff is in treble clef with a key signature of three sharps (F#, C#, G#). The melody consists of a dotted quarter note, an eighth note, a quarter note, a half note, a quarter rest, and an eighth note.

3: Clarinet

Musical staff for Clarinet 3, measures 56-57. The staff is in treble clef with a key signature of two flats (Bb, Eb). The melody consists of a series of eighth notes and quarter notes.

4: F Horn

Musical staff for F Horn 4, measures 56-57. The staff is in treble clef with a key signature of three sharps (F#, C#, G#). The melody consists of a dotted quarter note, an eighth note, a quarter note, a half note, and a dotted half note.

5: Bassoon

Musical staff for Bassoon 5, measures 56-57. The staff is in bass clef with a key signature of three sharps (F#, C#, G#). The melody consists of a series of eighth notes and quarter notes.

58

1: Flute

Musical staff for Flute 1, measures 58-59. The staff is in treble clef with a key signature of three sharps (F#, C#, G#). The melody consists of a dotted quarter note, an eighth note, a quarter note, a half note, a quarter rest, and a quarter note.

2: Oboe

Musical staff for Oboe 2, measures 58-59. The staff is in treble clef with a key signature of three sharps (F#, C#, G#). The melody consists of a dotted quarter note, an eighth note, a quarter note, a half note, and a dotted half note.

3: Clarinet

Musical staff for Clarinet 3, measures 58-59. The staff is in treble clef with a key signature of two flats (Bb, Eb). The melody consists of a series of eighth notes and quarter notes.

4: F Horn

Musical staff for F Horn 4, measures 58-59. The staff is in treble clef with a key signature of three sharps (F#, C#, G#). The melody consists of a dotted quarter note, an eighth note, a quarter note, a half note, and a dotted half note.

5: Bassoon

Musical staff for Bassoon 5, measures 58-59. The staff is in bass clef with a key signature of three sharps (F#, C#, G#). The melody consists of a series of eighth notes and quarter notes.

60

1: Flute

2: Oboe

3: Clarinet

4: F Horn

5: Bassoon

62

1: Flute

2: Oboe

3: Clarinet

4: F Horn

5: Bassoon

68

Musical staff for Flute 1, measures 68-69. The staff is in treble clef with a key signature of three sharps (F#, C#, G#). The melody consists of quarter notes: G5, A5, B5, A5, G5, F#5.

1: Flute

Musical staff for Oboe 2, measures 68-69. The staff is in treble clef with a key signature of three sharps (F#, C#, G#). The melody consists of quarter notes: G5, A5, B5, A5, G5, F#5.

2: Oboe

Musical staff for Clarinet 3, measures 68-69. The staff is in treble clef with a key signature of three flats (Bb, Eb, Ab). The melody consists of eighth notes: Bb4, C5, D5, Eb5, F5, G5, Ab5, Bb5, C6, Bb5, Ab5, G5, F5, Eb5, D5, C5, Bb4.

3: Clarinet

Musical staff for F Horn 4, measures 68-69. The staff is in treble clef with a key signature of three sharps (F#, C#, G#). The melody consists of quarter notes: G5, A5, B5, A5, G5, F#5.

4: FHorn

Musical staff for Bassoon 5, measures 68-69. The staff is in bass clef with a key signature of three sharps (F#, C#, G#). The melody consists of eighth notes: G4, A4, B4, C5, D5, E5, F5, G5, A5, B5, A5, G5, F#5, E5, D5, C5, B4.

5: Bassoon

70

Musical staff for Flute 1, measures 70-71. The staff is in treble clef with a key signature of three sharps (F#, C#, G#). The melody consists of quarter notes: G5, A5, B5, A5, G5, F#5, followed by a whole rest in measure 71.

1: Flute

Musical staff for Oboe 2, measures 70-71. The staff is in treble clef with a key signature of three sharps (F#, C#, G#). The melody consists of quarter notes: G5, A5, B5, A5, G5, F#5, followed by a whole rest in measure 71.

2: Oboe

Musical staff for Clarinet 3, measures 70-71. The staff is in treble clef with a key signature of three flats (Bb, Eb, Ab). The melody consists of eighth notes: Bb4, C5, D5, Eb5, F5, G5, Ab5, Bb5, C6, Bb5, Ab5, G5, F5, Eb5, D5, C5, Bb4.

3: Clarinet

Musical staff for F Horn 4, measures 70-71. The staff is in treble clef with a key signature of three sharps (F#, C#, G#). The melody consists of quarter notes: G5, A5, B5, A5, G5, F#5, followed by a whole rest in measure 71.

4: FHorn

Musical staff for Bassoon 5, measures 70-71. The staff is in bass clef with a key signature of three sharps (F#, C#, G#). The melody consists of eighth notes: G4, A4, B4, C5, D5, E5, F5, G5, A5, B5, A5, G5, F#5, E5, D5, C5, B4.

5: Bassoon

72

1: Flute

2: Oboe

3: Clarinet

4: FHorn

5: Bassoon

74

1: Flute

2: Oboe

3: Clarinet

4: FHorn

5: Bassoon

76

1: Flute

Musical staff for Flute 1, measures 76-77. The staff is in treble clef with a key signature of three sharps (F#, C#, G#). The melody consists of quarter notes: G5, A5, B5, A5, G5, F#5, E5, D5.

2: Oboe

Musical staff for Oboe 2, measures 76-77. The staff is in treble clef with a key signature of three sharps (F#, C#, G#). The melody consists of quarter notes: G5, A5, B5, A5, G5, F#5, E5, D5.

3: Clarinet

Musical staff for Clarinet 3, measures 76-77. The staff is in treble clef with a key signature of three flats (Bb, Eb, Ab). The melody consists of eighth notes: Bb4, Ab4, Gb4, Fb4, E4, D4, C4, Bb3, A3, G3, F3, E3, D3, C3, Bb2, Ab2, Gb2, Fb2, E2, D2, C2, Bb1, Ab1, Gb1, Fb1, E1, D1, C1, Bb0, Ab0, Gb0, Fb0, E0, D0, C0, Bb-1, Ab-1, Gb-1, Fb-1, E-1, D-1, C-1, Bb-2, Ab-2, Gb-2, Fb-2, E-2, D-2, C-2, Bb-3, Ab-3, Gb-3, Fb-3, E-3, D-3, C-3, Bb-4, Ab-4, Gb-4, Fb-4, E-4, D-4, C-4, Bb-5, Ab-5, Gb-5, Fb-5, E-5, D-5, C-5, Bb-6, Ab-6, Gb-6, Fb-6, E-6, D-6, C-6, Bb-7, Ab-7, Gb-7, Fb-7, E-7, D-7, C-7, Bb-8, Ab-8, Gb-8, Fb-8, E-8, D-8, C-8, Bb-9, Ab-9, Gb-9, Fb-9, E-9, D-9, C-9, Bb-10, Ab-10, Gb-10, Fb-10, E-10, D-10, C-10, Bb-11, Ab-11, Gb-11, Fb-11, E-11, D-11, C-11, Bb-12, Ab-12, Gb-12, Fb-12, E-12, D-12, C-12, Bb-13, Ab-13, Gb-13, Fb-13, E-13, D-13, C-13, Bb-14, Ab-14, Gb-14, Fb-14, E-14, D-14, C-14, Bb-15, Ab-15, Gb-15, Fb-15, E-15, D-15, C-15, Bb-16, Ab-16, Gb-16, Fb-16, E-16, D-16, C-16, Bb-17, Ab-17, Gb-17, Fb-17, E-17, D-17, C-17, Bb-18, Ab-18, Gb-18, Fb-18, E-18, D-18, C-18, Bb-19, Ab-19, Gb-19, Fb-19, E-19, D-19, C-19, Bb-20, Ab-20, Gb-20, Fb-20, E-20, D-20, C-20, Bb-21, Ab-21, Gb-21, Fb-21, E-21, D-21, C-21, Bb-22, Ab-22, Gb-22, Fb-22, E-22, D-22, C-22, Bb-23, Ab-23, Gb-23, Fb-23, E-23, D-23, C-23, Bb-24, Ab-24, Gb-24, Fb-24, E-24, D-24, C-24, Bb-25, Ab-25, Gb-25, Fb-25, E-25, D-25, C-25, Bb-26, Ab-26, Gb-26, Fb-26, E-26, D-26, C-26, Bb-27, Ab-27, Gb-27, Fb-27, E-27, D-27, C-27, Bb-28, Ab-28, Gb-28, Fb-28, E-28, D-28, C-28, Bb-29, Ab-29, Gb-29, Fb-29, E-29, D-29, C-29, Bb-30, Ab-30, Gb-30, Fb-30, E-30, D-30, C-30, Bb-31, Ab-31, Gb-31, Fb-31, E-31, D-31, C-31, Bb-32, Ab-32, Gb-32, Fb-32, E-32, D-32, C-32, Bb-33, Ab-33, Gb-33, Fb-33, E-33, D-33, C-33, Bb-34, Ab-34, Gb-34, Fb-34, E-34, D-34, C-34, Bb-35, Ab-35, Gb-35, Fb-35, E-35, D-35, C-35, Bb-36, Ab-36, Gb-36, Fb-36, E-36, D-36, C-36, Bb-37, Ab-37, Gb-37, Fb-37, E-37, D-37, C-37, Bb-38, Ab-38, Gb-38, Fb-38, E-38, D-38, C-38, Bb-39, Ab-39, Gb-39, Fb-39, E-39, D-39, C-39, Bb-40, Ab-40, Gb-40, Fb-40, E-40, D-40, C-40, Bb-41, Ab-41, Gb-41, Fb-41, E-41, D-41, C-41, Bb-42, Ab-42, Gb-42, Fb-42, E-42, D-42, C-42, Bb-43, Ab-43, Gb-43, Fb-43, E-43, D-43, C-43, Bb-44, Ab-44, Gb-44, Fb-44, E-44, D-44, C-44, Bb-45, Ab-45, Gb-45, Fb-45, E-45, D-45, C-45, Bb-46, Ab-46, Gb-46, Fb-46, E-46, D-46, C-46, Bb-47, Ab-47, Gb-47, Fb-47, E-47, D-47, C-47, Bb-48, Ab-48, Gb-48, Fb-48, E-48, D-48, C-48, Bb-49, Ab-49, Gb-49, Fb-49, E-49, D-49, C-49, Bb-50, Ab-50, Gb-50, Fb-50, E-50, D-50, C-50, Bb-51, Ab-51, Gb-51, Fb-51, E-51, D-51, C-51, Bb-52, Ab-52, Gb-52, Fb-52, E-52, D-52, C-52, Bb-53, Ab-53, Gb-53, Fb-53, E-53, D-53, C-53, Bb-54, Ab-54, Gb-54, Fb-54, E-54, D-54, C-54, Bb-55, Ab-55, Gb-55, Fb-55, E-55, D-55, C-55, Bb-56, Ab-56, Gb-56, Fb-56, E-56, D-56, C-56, Bb-57, Ab-57, Gb-57, Fb-57, E-57, D-57, C-57, Bb-58, Ab-58, Gb-58, Fb-58, E-58, D-58, C-58, Bb-59, Ab-59, Gb-59, Fb-59, E-59, D-59, C-59, Bb-60, Ab-60, Gb-60, Fb-60, E-60, D-60, C-60, Bb-61, Ab-61, Gb-61, Fb-61, E-61, D-61, C-61, Bb-62, Ab-62, Gb-62, Fb-62, E-62, D-62, C-62, Bb-63, Ab-63, Gb-63, Fb-63, E-63, D-63, C-63, Bb-64, Ab-64, Gb-64, Fb-64, E-64, D-64, C-64, Bb-65, Ab-65, Gb-65, Fb-65, E-65, D-65, C-65, Bb-66, Ab-66, Gb-66, Fb-66, E-66, D-66, C-66, Bb-67, Ab-67, Gb-67, Fb-67, E-67, D-67, C-67, Bb-68, Ab-68, Gb-68, Fb-68, E-68, D-68, C-68, Bb-69, Ab-69, Gb-69, Fb-69, E-69, D-69, C-69, Bb-70, Ab-70, Gb-70, Fb-70, E-70, D-70, C-70, Bb-71, Ab-71, Gb-71, Fb-71, E-71, D-71, C-71, Bb-72, Ab-72, Gb-72, Fb-72, E-72, D-72, C-72, Bb-73, Ab-73, Gb-73, Fb-73, E-73, D-73, C-73, Bb-74, Ab-74, Gb-74, Fb-74, E-74, D-74, C-74, Bb-75, Ab-75, Gb-75, Fb-75, E-75, D-75, C-75, Bb-76, Ab-76, Gb-76, Fb-76, E-76, D-76, C-76, Bb-77, Ab-77, Gb-77, Fb-77, E-77, D-77, C-77, Bb-78, Ab-78, Gb-78, Fb-78, E-78, D-78, C-78, Bb-79, Ab-79, Gb-79, Fb-79, E-79, D-79, C-79, Bb-80, Ab-80, Gb-80, Fb-80, E-80, D-80, C-80, Bb-81, Ab-81, Gb-81, Fb-81, E-81, D-81, C-81, Bb-82, Ab-82, Gb-82, Fb-82, E-82, D-82, C-82, Bb-83, Ab-83, Gb-83, Fb-83, E-83, D-83, C-83, Bb-84, Ab-84, Gb-84, Fb-84, E-84, D-84, C-84, Bb-85, Ab-85, Gb-85, Fb-85, E-85, D-85, C-85, Bb-86, Ab-86, Gb-86, Fb-86, E-86, D-86, C-86, Bb-87, Ab-87, Gb-87, Fb-87, E-87, D-87, C-87, Bb-88, Ab-88, Gb-88, Fb-88, E-88, D-88, C-88, Bb-89, Ab-89, Gb-89, Fb-89, E-89, D-89, C-89, Bb-90, Ab-90, Gb-90, Fb-90, E-90, D-90, C-90, Bb-91, Ab-91, Gb-91, Fb-91, E-91, D-91, C-91, Bb-92, Ab-92, Gb-92, Fb-92, E-92, D-92, C-92, Bb-93, Ab-93, Gb-93, Fb-93, E-93, D-93, C-93, Bb-94, Ab-94, Gb-94, Fb-94, E-94, D-94, C-94, Bb-95, Ab-95, Gb-95, Fb-95, E-95, D-95, C-95, Bb-96, Ab-96, Gb-96, Fb-96, E-96, D-96, C-96, Bb-97, Ab-97, Gb-97, Fb-97, E-97, D-97, C-97, Bb-98, Ab-98, Gb-98, Fb-98, E-98, D-98, C-98, Bb-99, Ab-99, Gb-99, Fb-99, E-99, D-99, C-99, Bb-100, Ab-100, Gb-100, Fb-100, E-100, D-100, C-100, Bb-101, Ab-101, Gb-101, Fb-101, E-101, D-101, C-101, Bb-102, Ab-102, Gb-102, Fb-102, E-102, D-102, C-102, Bb-103, Ab-103, Gb-103, Fb-103, E-103, D-103, C-103, Bb-104, Ab-104, Gb-104, Fb-104, E-104, D-104, C-104, Bb-105, Ab-105, Gb-105, Fb-105, E-105, D-105, C-105, Bb-106, Ab-106, Gb-106, Fb-106, E-106, D-106, C-106, Bb-107, Ab-107, Gb-107, Fb-107, E-107, D-107, C-107, Bb-108, Ab-108, Gb-108, Fb-108, E-108, D-108, C-108, Bb-109, Ab-109, Gb-109, Fb-109, E-109, D-109, C-109, Bb-110, Ab-110, Gb-110, Fb-110, E-110, D-110, C-110, Bb-111, Ab-111, Gb-111, Fb-111, E-111, D-111, C-111, Bb-112, Ab-112, Gb-112, Fb-112, E-112, D-112, C-112, Bb-113, Ab-113, Gb-113, Fb-113, E-113, D-113, C-113, Bb-114, Ab-114, Gb-114, Fb-114, E-114, D-114, C-114, Bb-115, Ab-115, Gb-115, Fb-115, E-115, D-115, C-115, Bb-116, Ab-116, Gb-116, Fb-116, E-116, D-116, C-116, Bb-117, Ab-117, Gb-117, Fb-117, E-117, D-117, C-117, Bb-118, Ab-118, Gb-118, Fb-118, E-118, D-118, C-118, Bb-119, Ab-119, Gb-119, Fb-119, E-119, D-119, C-119, Bb-120, Ab-120, Gb-120, Fb-120, E-120, D-120, C-120, Bb-121, Ab-121, Gb-121, Fb-121, E-121, D-121, C-121, Bb-122, Ab-122, Gb-122, Fb-122, E-122, D-122, C-122, Bb-123, Ab-123, Gb-123, Fb-123, E-123, D-123, C-123, Bb-124, Ab-124, Gb-124, Fb-124, E-124, D-124, C-124, Bb-125, Ab-125, Gb-125, Fb-125, E-125, D-125, C-125, Bb-126, Ab-126, Gb-126, Fb-126, E-126, D-126, C-126, Bb-127, Ab-127, Gb-127, Fb-127, E-127, D-127, C-127, Bb-128, Ab-128, Gb-128, Fb-128, E-128, D-128, C-128, Bb-129, Ab-129, Gb-129, Fb-129, E-129, D-129, C-129, Bb-130, Ab-130, Gb-130, Fb-130, E-130, D-130, C-130, Bb-131, Ab-131, Gb-131, Fb-131, E-131, D-131, C-131, Bb-132, Ab-132, Gb-132, Fb-132, E-132, D-132, C-132, Bb-133, Ab-133, Gb-133, Fb-133, E-133, D-133, C-133, Bb-134, Ab-134, Gb-134, Fb-134, E-134, D-134, C-134, Bb-135, Ab-135, Gb-135, Fb-135, E-135, D-135, C-135, Bb-136, Ab-136, Gb-136, Fb-136, E-136, D-136, C-136, Bb-137, Ab-137, Gb-137, Fb-137, E-137, D-137, C-137, Bb-138, Ab-138, Gb-138, Fb-138, E-138, D-138, C-138, Bb-139, Ab-139, Gb-139, Fb-139, E-139, D-139, C-139, Bb-140, Ab-140, Gb-140, Fb-140, E-140, D-140, C-140, Bb-141, Ab-141, Gb-141, Fb-141, E-141, D-141, C-141, Bb-142, Ab-142, Gb-142, Fb-142, E-142, D-142, C-142, Bb-143, Ab-143, Gb-143, Fb-143, E-143, D-143, C-143, Bb-144, Ab-144, Gb-144, Fb-144, E-144, D-144, C-144, Bb-145, Ab-145, Gb-145, Fb-145, E-145, D-145, C-145, Bb-146, Ab-146, Gb-146, Fb-146, E-146, D-146, C-146, Bb-147, Ab-147, Gb-147, Fb-147, E-147, D-147, C-147, Bb-148, Ab-148, Gb-148, Fb-148, E-148, D-148, C-148, Bb-149, Ab-149, Gb-149, Fb-149, E-149, D-149, C-149, Bb-150, Ab-150, Gb-150, Fb-150, E-150, D-150, C-150, Bb-151, Ab-151, Gb-151, Fb-151, E-151, D-151, C-151, Bb-152, Ab-152, Gb-152, Fb-152, E-152, D-152, C-152, Bb-153, Ab-153, Gb-153, Fb-153, E-153, D-153, C-153, Bb-154, Ab-154, Gb-154, Fb-154, E-154, D-154, C-154, Bb-155, Ab-155, Gb-155, Fb-155, E-155, D-155, C-155, Bb-156, Ab-156, Gb-156, Fb-156, E-156, D-156, C-156, Bb-157, Ab-157, Gb-157, Fb-157, E-157, D-157, C-157, Bb-158, Ab-158, Gb-158, Fb-158, E-158, D-158, C-158, Bb-159, Ab-159, Gb-159, Fb-159, E-159, D-159, C-159, Bb-160, Ab-160, Gb-160, Fb-160, E-160, D-160, C-160, Bb-161, Ab-161, Gb-161, Fb-161, E-161, D-161, C-161, Bb-162, Ab-162, Gb-162, Fb-162, E-162, D-162, C-162, Bb-163, Ab-163, Gb-163, Fb-163, E-163, D-163, C-163, Bb-164, Ab-164, Gb-164, Fb-164, E-164, D-164, C-164, Bb-165, Ab-165, Gb-165, Fb-165, E-165, D-165, C-165, Bb-166, Ab-166, Gb-166, Fb-166, E-166, D-166, C-166, Bb-167, Ab-167, Gb-167, Fb-167, E-167, D-167, C-167, Bb-168, Ab-168, Gb-168, Fb-168, E-168, D-168, C-168, Bb-169, Ab-169, Gb-169, Fb-169, E-169, D-169, C-169, Bb-170, Ab-170, Gb-170, Fb-170, E-170, D-170, C-170, Bb-171, Ab-171, Gb-171, Fb-171, E-171, D-171, C-171, Bb-172, Ab-172, Gb-172, Fb-172, E-172, D-172, C-172, Bb-173, Ab-173, Gb-173, Fb-173, E-173, D-173, C-173, Bb-174, Ab-174, Gb-174, Fb-174, E-174, D-174, C-174, Bb-175, Ab-175, Gb-175, Fb-175, E-175, D-175, C-175, Bb-176, Ab-176, Gb-176, Fb-176, E-176, D-176, C-176, Bb-177, Ab-177, Gb-177, Fb-177, E-177, D-177, C-177, Bb-178, Ab-178, Gb-178, Fb-178, E-178, D-178, C-178, Bb-179, Ab-179, Gb-179, Fb-179, E-179, D-179, C-179, Bb-180, Ab-180, Gb-180, Fb-180, E-180, D-180, C-180, Bb-181, Ab-181, Gb-181, Fb-181, E-181, D-181, C-181, Bb-182, Ab-182, Gb-182, Fb-182, E-182, D-182, C-182, Bb-183, Ab-183, Gb-183, Fb-183, E-183, D-183, C-183, Bb-184, Ab-184, Gb-184, Fb-184, E-184, D-184, C-184, Bb-185, Ab-185, Gb-185, Fb-185, E-185, D-185, C-185, Bb-186, Ab-186, Gb-186, Fb-186, E-186, D-186, C-186, Bb-187, Ab-187, Gb-187, Fb-187, E-187, D-187, C-187, Bb-188, Ab-188, Gb-188, Fb-188, E-188, D-188, C-188, Bb-189, Ab-189, Gb-189, Fb-189, E-189, D-189, C-189, Bb-190, Ab-190, Gb-190, Fb-190, E-190, D-190, C-190, Bb-191, Ab-191, Gb-191, Fb-191, E-191, D-191, C-191, Bb-192, Ab-192, Gb-192, Fb-192, E-192, D-192, C-192, Bb-193, Ab-193, Gb-193, Fb-193, E-193, D-193, C-193, Bb-194, Ab-194, Gb-194, Fb-194, E-194, D-194, C-194, Bb-195, Ab-195, Gb-195, Fb-195, E-195, D-195, C-195, Bb-196, Ab-196, Gb-196, Fb-196, E-196, D-196, C-196, Bb-197, Ab-197, Gb-197, Fb-197, E-197, D-197, C-197, Bb-198, Ab-198, Gb-198, Fb-198, E-198, D-198, C-198, Bb-199, Ab-199, Gb-199, Fb-199, E-199, D-199, C-199, Bb-200, Ab-200, Gb-200, Fb-200, E-200, D-200, C-200, Bb-201, Ab-201, Gb-201, Fb-201, E-201, D-201, C-201, Bb-202, Ab-202, Gb-202, Fb-202, E-202, D-202, C-202, Bb-203, Ab-203, Gb-203, Fb-203, E-203, D-203, C-203, Bb-204, Ab-204, Gb-204, Fb-204, E-204, D-204, C-204, Bb-205, Ab-205, Gb-205, Fb-205, E-205, D-205, C-205, Bb-206, Ab-206, Gb-206, Fb-206, E-206, D-206, C-206, Bb-207, Ab-207, Gb-207, Fb-207, E-207, D-207, C-207, Bb-208, Ab-208, Gb-208, Fb-208, E-208, D-208, C-208, Bb-209, Ab-209, Gb-209, Fb-209, E-209, D-209, C-209, Bb-210, Ab-210, Gb-210, Fb-210, E-210, D-210, C-210, Bb-211, Ab-211, Gb-211, Fb-211, E-211, D-211, C-211, Bb-212, Ab-212, Gb-212, Fb-212, E-212, D-212, C-212, Bb-213, Ab-213, Gb-213, Fb-213, E-213, D-213, C-213, Bb-214, Ab-214, Gb-214, Fb-214, E-214, D-214, C-214, Bb-215, Ab-215, Gb-215, Fb-215, E-215, D-215, C-215, Bb-216, Ab-216, Gb-216, Fb-216, E-216, D-216, C-216, Bb-217, Ab-217, Gb-217, Fb-217, E-217, D-217, C-217, Bb-218, Ab-218, Gb-218, Fb-218, E-218, D-218, C-218, Bb-219, Ab-219, Gb-219, Fb-219, E-219, D-219, C-219, Bb-220, Ab-220, Gb-220, Fb-220, E-220, D-220, C-220, Bb-221, Ab-221, Gb-221, Fb-221, E-221, D-221, C-221, Bb-222, Ab-222, Gb-222, Fb-222, E-222, D-222, C-222, Bb-223, Ab-223, Gb-223, Fb-223, E-223, D-223, C-223, Bb-224, Ab-224, Gb-224, Fb-224, E-224, D-224, C-224, Bb-225, Ab-225, Gb-225, Fb-225, E-225, D-225, C-225, Bb-226, Ab-226, Gb-226, Fb-226, E-226, D-226, C-226, Bb-227, Ab-227, Gb-227, Fb-227, E-227, D-227, C-227, Bb-228, Ab-228, Gb-228, Fb-228, E-228, D-228, C-228, Bb-229, Ab-229, Gb-229, Fb-229, E-229, D-229, C-229, Bb-230, Ab-230, Gb-230, Fb-230, E-230, D-230, C-230, Bb-231, Ab-231, Gb-231, Fb-231, E-231, D-231, C-231, Bb-232, Ab-232, Gb-232, Fb-232, E-232, D-232, C-232, Bb-233, Ab-233, Gb-233, Fb-233, E-233, D-233, C-233, Bb-234, Ab-234, Gb-234, Fb-234, E-234, D-234, C-234, Bb-235, Ab-235, Gb-235, Fb-235, E-235, D-235, C-235, Bb-236, Ab-236, Gb-236, Fb-236, E-236, D-236, C-236, Bb-237, Ab-237, Gb-237, Fb-237, E-237, D-237, C-237, Bb-238, Ab-238, Gb-238, Fb-238, E-238, D-238, C-238, Bb-239, Ab-239, Gb-239, Fb-239, E-239, D-239, C-239, Bb-240, Ab-240, Gb-240, Fb-240, E-240, D-240, C-240, Bb-241, Ab-241, Gb-241, Fb-241, E-241, D-241, C-241, Bb-242, Ab-242, Gb-242, Fb-242, E-242, D-242, C-242, Bb-243, Ab-243, Gb-243, Fb-243, E-243, D-243, C-243, Bb-244, Ab-244, Gb-244, Fb-244, E-244, D-244, C-244, Bb-245, Ab-245, Gb-245, Fb-245, E-245, D-245, C-245, Bb-246, Ab-246, Gb-246, Fb-246, E-246, D-246, C-246, Bb-247, Ab-247, Gb-247, Fb-247, E-247, D-247, C-247, Bb-248, Ab-248, Gb-248, Fb-248, E-248, D-248, C-248, Bb-249, Ab-249, Gb-249, Fb-249, E-249, D-249, C-249, Bb-250, Ab-250, Gb-250, Fb-250, E-250, D-250, C-250, Bb-251, Ab-251, Gb-251, Fb-251, E-251, D-251, C-251, Bb-252, Ab-252, Gb-252, Fb-252, E-252, D-252, C-252, Bb-253, Ab-253, Gb-253, Fb-253, E-253, D-253, C-253, Bb-254, Ab-254, Gb-254, Fb-254, E-254, D-254, C-254, Bb-255, Ab-255, Gb-255, Fb-255, E-255, D-255, C-255, Bb-256, Ab-256, Gb-256, Fb-256, E-256, D-256, C-256, Bb-257, Ab-257, Gb-257, Fb-257, E-257, D-257, C-257, Bb-258, Ab-258, Gb-258, Fb-258, E-258, D-258, C-258, Bb-259, Ab-259, Gb-259, Fb-259, E-259, D-259, C-259, Bb-260, Ab-260, Gb-260, Fb-260, E-260, D-260, C-260, Bb-261, Ab-261, Gb-261, Fb-261, E-261, D-261, C-261, Bb-262, Ab-262, Gb-262, Fb-262, E-262, D-262, C-262, Bb-263, Ab-263, Gb-263, Fb-263, E-263, D-263, C-263, Bb-264, Ab-264, Gb-264, Fb-264, E-264, D-264, C-264, Bb-265, Ab-265, Gb-265, Fb-265, E-265, D-265, C-265, Bb-266, Ab-266, Gb-266, Fb-266, E-266, D-266, C-266, Bb-267, Ab-267, Gb-267, Fb-267, E-267, D-267, C-267, Bb-268, Ab-268, Gb-268, Fb-268, E-268, D-268, C-268, Bb-269, Ab-269, Gb-269, Fb-269, E-269, D-269, C-269, Bb-270, Ab-270, Gb-270, Fb-270, E-270, D-270, C-270, Bb-271, Ab-271, Gb-271, Fb-271, E-271, D-271, C-271, Bb-272, Ab-272, Gb-272, Fb-272, E-272, D-272, C-272, Bb-273, Ab-273, Gb-273, Fb-273, E-273, D-273, C-273, Bb-274, Ab-274, Gb-274, Fb-274, E-274, D-274, C-274, Bb-275, Ab-275, Gb-275, Fb-275, E-275, D-275, C-275, Bb-276, Ab-276, Gb-276, Fb-276, E-276, D-276, C-276, Bb-277, Ab-277, Gb-277, Fb-277, E-277, D-277, C-277, Bb-278, Ab-278, Gb-278, Fb-278, E-278, D-278, C-278, Bb-279, Ab-279, Gb-279, Fb-279, E-279, D-279, C-279, Bb-280, Ab-280, Gb-280, Fb-280,

80

1: Flute

2: Oboe

3: Clarinet

4: F Horn

5: Bassoon

82

1: Flute

2: Oboe

3: Clarinet

4: F Horn

5: Bassoon

84

1: Flute

Musical notation for Flute 1 at measure 84. The staff is in treble clef with a key signature of three sharps (F#, C#, G#). The melody begins with a dotted quarter note, followed by an eighth note, a quarter rest, and another eighth note. The second measure features a half note with a slur over it, followed by a quarter rest.

2: Oboe

Musical notation for Oboe 2 at measure 84. The staff is in treble clef with a key signature of three sharps (F#, C#, G#). The melody is identical to the Flute 1 part, starting with a dotted quarter note, an eighth note, a quarter rest, and another eighth note, followed by a slurred half note and a quarter rest.

3: Clarinet

Musical notation for Clarinet 3 at measure 84. The staff is in treble clef with a key signature of three flats (Bb, Eb, Ab). The melody consists of eighth notes with slurs, starting on a dotted quarter note and continuing through the second measure.

4: FHorn

Musical notation for F Horn 4 at measure 84. The staff is in treble clef with a key signature of three sharps (F#, C#, G#). The melody consists of a dotted quarter note followed by a half note with a slur over it, and a quarter rest.

5: Bassoon

Musical notation for Bassoon 5 at measure 84. The staff is in bass clef with a key signature of three sharps (F#, C#, G#). The melody consists of eighth notes with slurs, starting on a dotted quarter note and continuing through the second measure.

86

1: Flute

Musical notation for Flute 1 at measure 86. The staff is in treble clef with a key signature of three sharps (F#, C#, G#). The first measure contains a whole rest, and the second measure contains a quarter note with a slur over it.

2: Oboe

Musical notation for Oboe 2 at measure 86. The staff is in treble clef with a key signature of three sharps (F#, C#, G#). The first measure contains a whole rest, and the second measure contains a quarter note with a slur over it.

3: Clarinet

Musical notation for Clarinet 3 at measure 86. The staff is in treble clef with a key signature of three flats (Bb, Eb, Ab). The melody consists of eighth notes with slurs, starting on a dotted quarter note and continuing through the second measure.

4: FHorn

Musical notation for F Horn 4 at measure 86. The staff is in treble clef with a key signature of three sharps (F#, C#, G#). The first measure contains a whole rest, and the second measure contains a quarter note with a slur over it.

5: Bassoon

Musical notation for Bassoon 5 at measure 86. The staff is in bass clef with a key signature of three sharps (F#, C#, G#). The melody consists of eighth notes with slurs, starting on a dotted quarter note and continuing through the second measure.

88

1: Flute

Musical staff for Flute 1, measures 88-90. The key signature is three sharps (F#, C#, G#). The staff contains a sequence of notes: G4 (quarter), A4 (quarter), B4 (quarter), C5 (quarter), B4 (quarter), A4 (quarter), G4 (quarter).

2: Oboe

Musical staff for Oboe 2, measures 88-90. The key signature is three sharps (F#, C#, G#). The staff contains a sequence of notes: G4 (quarter), A4 (quarter), B4 (quarter), C5 (quarter), B4 (quarter), A4 (quarter), G4 (quarter).

3: Clarinet

Musical staff for Clarinet 3, measures 88-90. The key signature is three flats (Bb, Eb, Ab). The staff contains a sequence of notes: Bb3 (half), Eb3 (half).

4: F Horn

Musical staff for F Horn 4, measures 88-90. The key signature is three sharps (F#, C#, G#). The staff contains a sequence of notes: G4 (quarter), A4 (quarter), B4 (quarter), C5 (quarter), B4 (quarter), A4 (quarter), G4 (quarter).

5: Bassoon

Musical staff for Bassoon 5, measures 88-90. The key signature is three sharps (F#, C#, G#). The staff contains a sequence of notes: G3 (quarter), A3 (quarter), B3 (quarter), C4 (quarter), B3 (quarter), A3 (quarter), G3 (quarter).

90

1: Flute

Musical staff for Flute 1, measures 90-92. The key signature is three sharps (F#, C#, G#). The staff contains a sequence of notes: G4 (quarter), A4 (quarter), B4 (quarter), C5 (quarter), B4 (quarter), A4 (quarter), G4 (quarter).

2: Oboe

Musical staff for Oboe 2, measures 90-92. The key signature is three sharps (F#, C#, G#). The staff contains a sequence of notes: G4 (quarter), A4 (quarter), B4 (quarter), C5 (quarter), B4 (quarter), A4 (quarter), G4 (quarter).

3: Clarinet

Musical staff for Clarinet 3, measures 90-92. The key signature is three flats (Bb, Eb, Ab). The staff contains a sequence of notes: Bb3 (half), Eb3 (half).

4: F Horn

Musical staff for F Horn 4, measures 90-92. The key signature is three sharps (F#, C#, G#). The staff contains a sequence of notes: G4 (quarter), A4 (quarter), B4 (quarter), C5 (quarter), B4 (quarter), A4 (quarter), G4 (quarter).

5: Bassoon

Musical staff for Bassoon 5, measures 90-92. The key signature is three sharps (F#, C#, G#). The staff contains a sequence of notes: G3 (quarter), A3 (quarter), B3 (quarter), C4 (quarter), B3 (quarter), A3 (quarter), G3 (quarter).

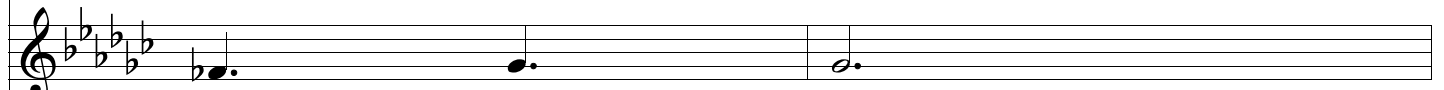
92



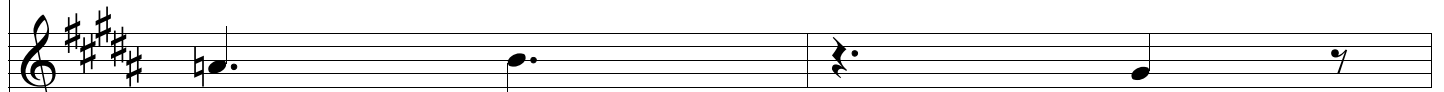
1: Flute



2: Oboe



3: Clarinet

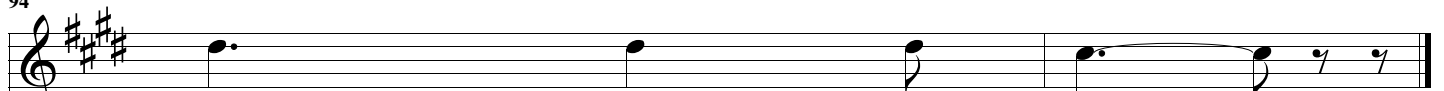


4: F Horn

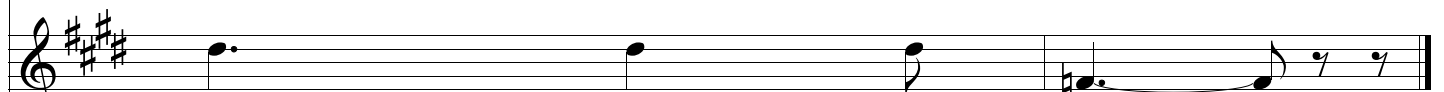


5: Bassoon

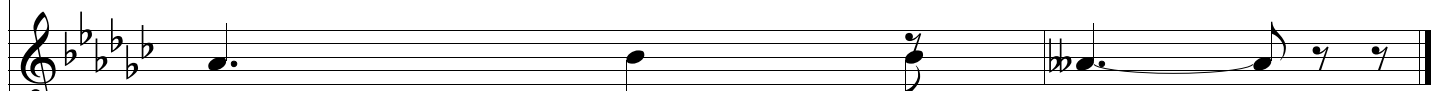
94



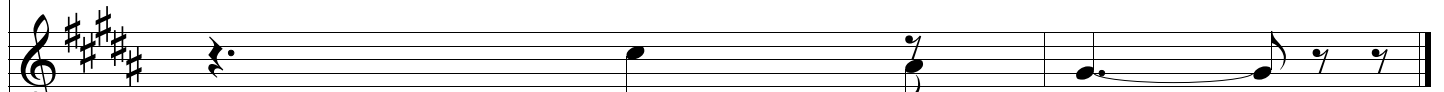
1: Flute



2: Oboe



3: Clarinet



4: F Horn



5: Bassoon