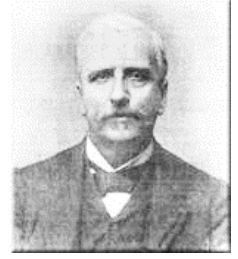


The Shepherds

Organ transcription by C.W. Crane (1865-1936)

Edited by
Maurizio Machella



Th. Salomé
(1834-1896)

Allegretto quasi andantino

mp
Man. divisi

p

5

9

The image shows a musical score for an organ transcription of 'The Shepherds' by Th. Salomé. The score is in G major and 6/8 time. It consists of three systems of music. The first system starts with a treble clef, a key signature of one sharp (F#), and a 6/8 time signature. The tempo is marked 'Allegretto quasi andantino'. The dynamics are marked 'mp' (mezzo-piano) and 'p' (piano). The instruction 'Man. divisi' (manuals divided) is present. The score features a melody in the right hand and accompaniment in the left hand. The second system begins at measure 5, and the third system begins at measure 9. The notation includes various musical symbols such as notes, rests, beams, and dynamic markings.

13

p *rinf.*

This system contains measures 13 through 16. The music is in G major. The right hand features a melodic line with eighth-note patterns and slurs. The left hand provides harmonic support with chords and moving bass lines. Dynamic markings include *p* (piano) and *rinf.* (rinfacciato).

17

dim.

This system contains measures 17 through 20. The right hand continues with eighth-note patterns. The left hand has a more active bass line. A *dim.* (diminuendo) marking is present in the first measure.

21

a tempo *poco ritenuto*

This system contains measures 21 through 24. The right hand has a more complex melodic line with slurs and accents. The left hand has a steady bass line. Dynamic markings include *a tempo* and *poco ritenuto* (poco ritenuto).

25

This system contains measures 25 through 28. The right hand features a melodic line with slurs and accents. The left hand continues with a steady bass line.

30

mf

This system contains measures 30 through 34. The music is in G major (one sharp). The right hand features a complex melodic line with many sixteenth and thirty-second notes, often beamed together. The left hand provides a harmonic accompaniment with chords and moving bass lines. A dynamic marking of *mf* (mezzo-forte) is present in the final measure of this system.

35

pp mf

This system contains measures 35 through 39. The right hand continues with its intricate melodic patterns. The left hand has a more active role with moving bass lines. Dynamic markings include *pp* (pianissimo) in measure 36 and *mf* (mezzo-forte) in measure 38.

40

pp p

This system contains measures 40 through 45. The right hand's melodic line remains highly detailed. The left hand's accompaniment consists of chords and moving bass notes. Dynamic markings include *pp* (pianissimo) in measure 40 and *p* (piano) in measure 42.

46

pp ppp

This system contains measures 46 through 50, which concludes the piece. The right hand's melodic line leads to a final cadence. The left hand features a long, sustained chord in the final measure. Dynamic markings include *pp* (pianissimo) in measure 47 and *ppp* (pianississimo) in measure 50.