



# Bernard Dewagtere

France, SIN LE NOBLE

## Peter and the Wolf – 4. The Cat (Op. 67) Prokofiev, Sergei

### About the artist

Doctor in musicology, conductor and composer.

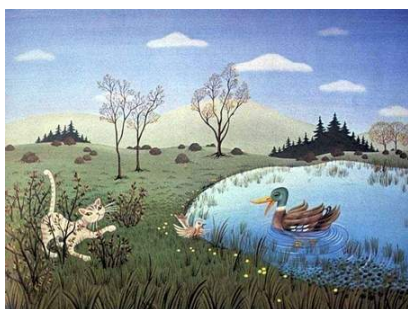
Compositions and arrangements from all eras, in all styles or musical genres and for any instrument or vocal training.

**Qualification:** PhD Musicology

**Associate:** SACEM - IPI code of the artist : 342990

**Artist page :** <https://www.free-scores.com/Download-PDF-Sheet-Music-bernard-dewagtere.htm>

### About the piece



**Title:** Peter and the Wolf – 4. The Cat [Op. 67]

**Composer:** Prokofiev, Sergei

**Arranger:** Dewagtere, Bernard

**Copyright:** Copyright © Bernard Dewagtere

**Publisher:** Dewagtere, Bernard

**Instrumentation:** Trumpet in Bb or Bugle or cornet, Piano or Organ

**Style:** Early 20th century

### Bernard Dewagtere on [free-scores.com](https://www.free-scores.com)

#### LICENSE

This sheet music requires an authorization  
- for public performances  
- for use by teachers

**Buy this license at :**

<https://www.free-scores.com//license?p=anZUVb4y8Z>



- listen to the audio
- share your interpretation
- comment
- pay the licence
- contact the artist

Prohibited distribution on other website.



Peter and the Wolf (Op. 67)

Trp. (Sib)

2  
13

*mp*

*p*

*pp*

*mp*

This system covers measures 2 to 13. The trumpet part (Sib) is in treble clef with a key signature of two sharps (F# and C#). It remains silent until measure 10, where it begins with a melodic line. The piano accompaniment is in treble and bass clefs with the same key signature. It features chords and arpeggiated figures. Dynamics include *mp* for the trumpet, *p* and *pp* for the piano, and a crescendo leading to *mp* in measure 13.

Trp. (Sib)

17

*mf*

*mf*

This system covers measures 17 to 20. The trumpet part (Sib) plays a continuous eighth-note melody. The piano accompaniment continues with chords and arpeggiated patterns. Dynamics are marked *mf* for both parts.

Trp. (Sib)

21

*f*

*8va*

This system covers measures 21 to 24. The trumpet part (Sib) plays a melodic line with accents. The piano accompaniment features chords and arpeggiated figures. Dynamics include *f* for the piano and *8va* for the trumpet in measure 24. The key signature changes to one flat (Bb) in measure 24.

Trp. (Sib)

25

(8<sup>va</sup>)

*f*

Trp. (Sib)

29

*mf*

*mp*

Trp. (Sib)

33

*mp*

Trp. (Sib)

37

*mp*

(8<sup>vb</sup>)